



2026 MSI Investors Meeting

2026/03/13

INNOVATE
BEYOND



Safe Harbor Notice

- This presentation contains forward-looking statements and is subject to risks and uncertainties.
- Actual results may differ materially from those contained in the forward-looking statements.
- The projections should not be interpreted as legally binding commitments, but rather as flexible information subject to change occasionally.



msi

Agenda

- Business Direction
- Financial Result



msi

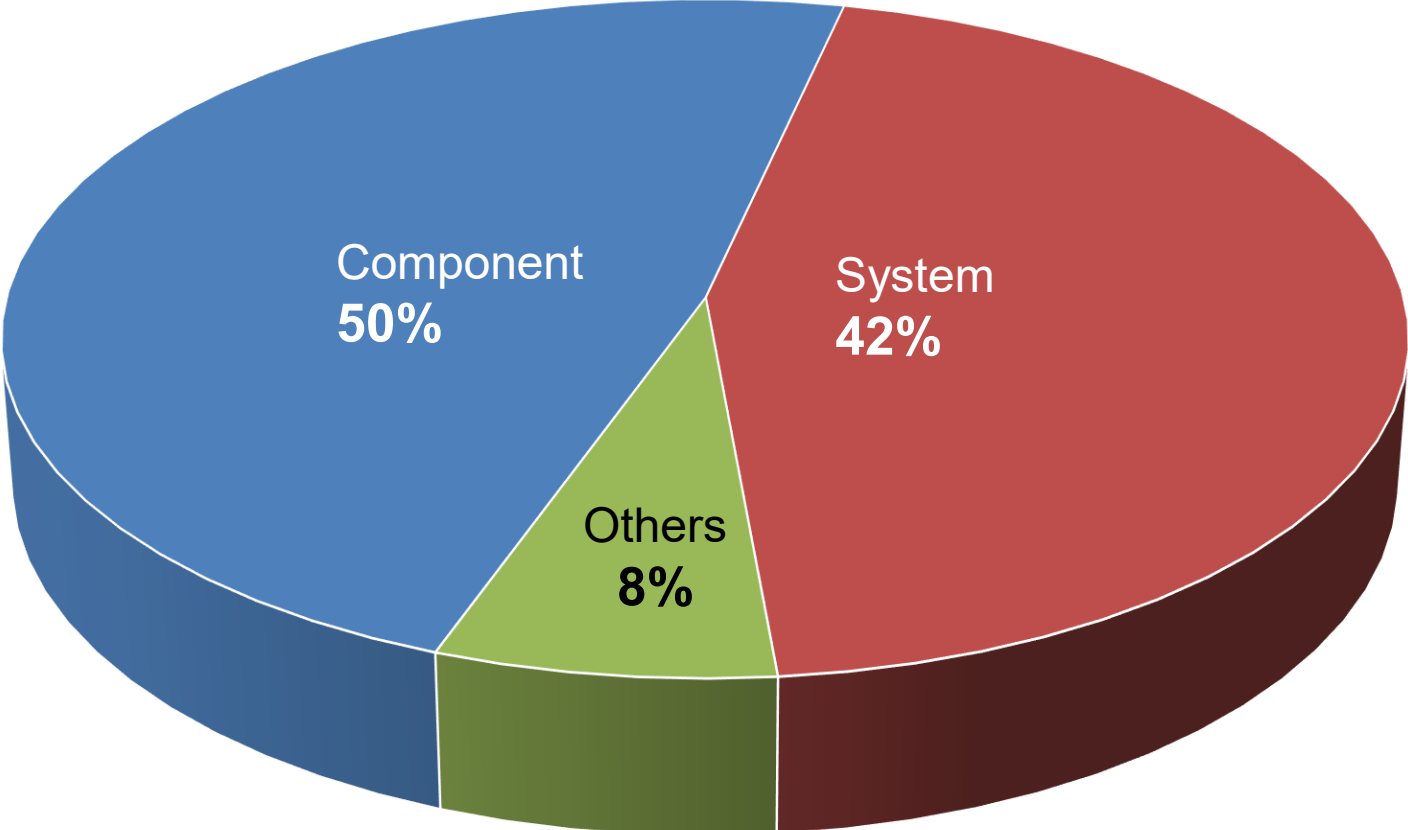
Business Direction

Revenue and Profit of Late 5 Years

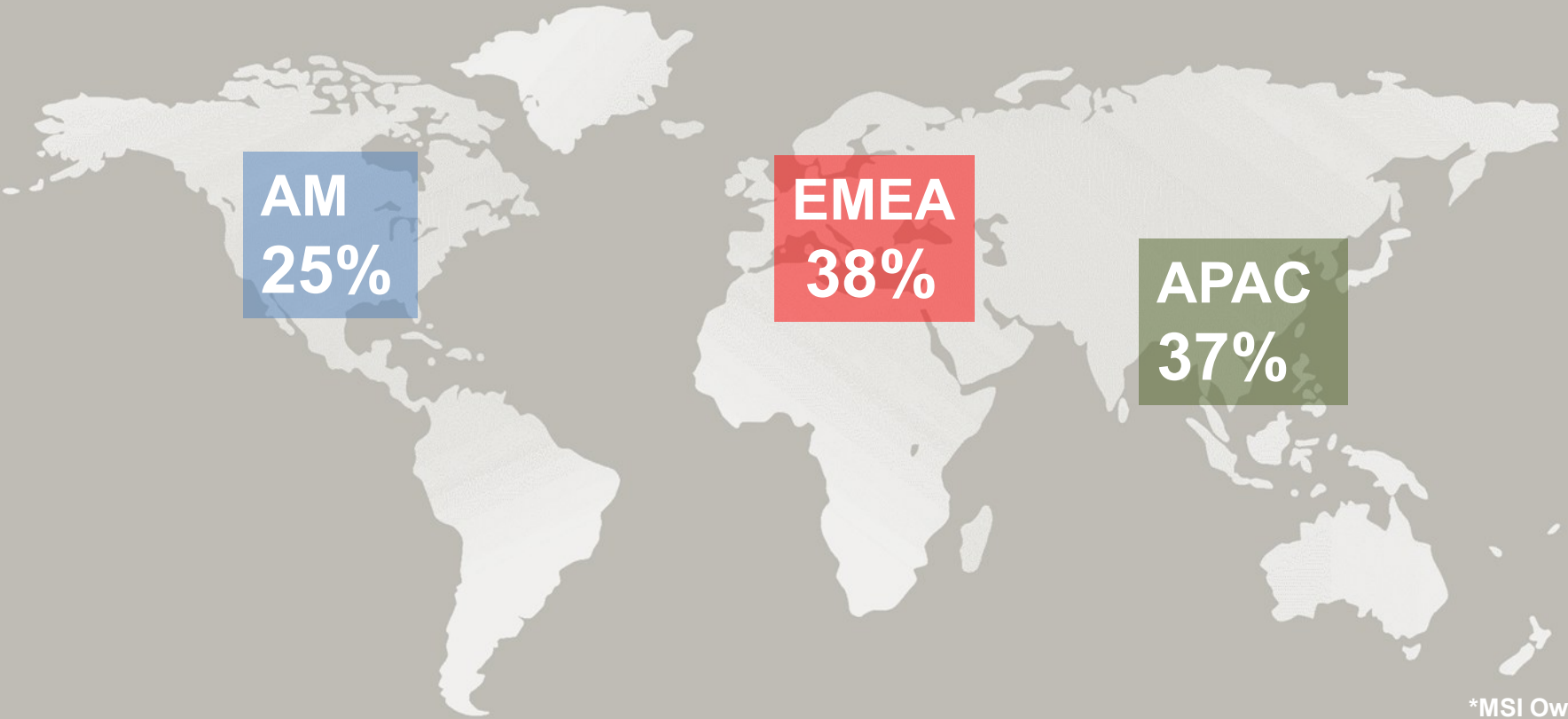


(in NT\$mn)	2021	2022	2023	2024	2025
Net Revenue	201,810	180,411	182,966	197,872	230,196
YoY %	37.8%	-10.6%	1.4%	8.1%	16.3%
Gross Profit	38,244	25,728	22,846	24,195	25,213
YoY %	79.5%	-32.7%	-11.2%	5.9%	4.2%
Operating Profit	19,975	10,696	8,810	7,117	6,388
YoY %	117.4%	-46.5%	-17.6%	-19.2%	-10.2%
Net Income	16,921	9,963	7,533	6,793	5,748
YoY %	112.6%	-41.1%	-24.4%	-9.8%	-15.4%

2025 Revenue by Product Line



2025 Revenue by Geography



Made for Gamers



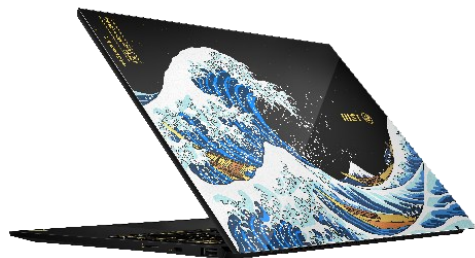
msi



For Creators and Business Elites



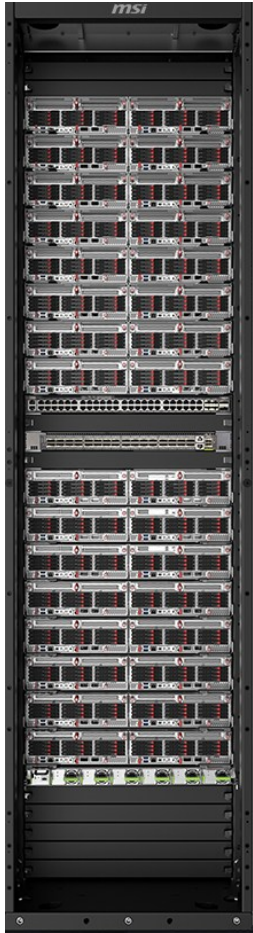
msi



Enterprise and Commercial Products



msi



Own-Brand Marketing



reddot winner 2025



DESIGN AWARD 2025



GOLDEN PIN DESIGN AWARD



TAIWAN EXCELLENCE



To Expand Production Capacity



The new plant in Taoyuan's Gueishan District (龜山) is under construction, which is to add eight surface mount technology production lines in 2027.



msi GLOBAL PRESENCE



A global presence in over 130 countries,
spanning the America, EMEA, Asia and Indo-Pacific.



msi

Financial Results

Financial Results



(in NT\$mn)	2023	2024	2025				
			Q1	Q2	Q3	Q4	Total
Net Revenue	182,966	197,872	53,540	61,317	57,731	57,608	230,196
<i>YoY growth</i>	<i>1.4%</i>	<i>8.1%</i>	<i>12.4%</i>	<i>31.4%</i>	<i>10.8%</i>	<i>11.9%</i>	<i>16.3%</i>
Gross Profit	22,846	24,195	5,496	6,815	6,499	6,402	25,212
Gross Margin %	12.5%	12.2%	10.3%	11.1%	11.3%	11.1%	11.0%
Operating Expense	(14,036)	(17,078)	(4,484)	(4,751)	(4,702)	(4,887)	(18,824)
Expense %	7.7%	8.6%	8.4%	7.7%	8.1%	8.5%	8.2%
Operating Profit	8,810	7,117	1,012	2,064	1,797	1,515	6,388
Operating Margin %	4.8%	3.6%	1.9%	3.4%	3.1%	2.6%	2.8%
Non-OP Items	367	1,391	269	(153)	174	346	636
Profit before tax	9,177	8,508	1,281	1,911	1,971	1,861	7,024
PBT %	5.0%	4.3%	2.4%	3.1%	3.4%	3.2%	3.1%
Tax	(1,644)	(1,715)	(204)	(568)	(275)	(229)	(1,276)
Net Income	7,533	6,793	1,077	1,343	1,696	1,632	5,748
Net Income %	4.1%	3.4%	2.0%	2.2%	2.9%	2.8%	2.5%
EPS (in NT\$)	8.92	8.04	1.27	1.59	2.01	1.93	6.80
Inventories	33,395	36,858	40,875	45,169	48,517	47,765	

Balance Sheets & CCC Days



(in NT\$mn)	Dec. 31, 2024	Dec. 31, 2025	YoY
Cash & equivalents	23,043	31,086	35%
Accounts receivable	23,360	26,757	15%
Inventories	36,858	47,765	30%
Current Assets	87,202	108,601	25%
Total Assets	96,620	120,955	25%
Current Liabilities	42,652	58,875	38%
Total Liabilities	43,746	66,352	52%
Paid-in capital	8,449	8,449	0%
Stockholders' equity	52,874	54,603	3%
Total Liabilities & Equity	96,620	120,955	25%
Avg. Days of Inventory	74	75	
Avg. Days of AR	40	40	
Avg. Days of AP	56	58	
Avg. CCC Days	58	57	



40TH
ANNIVERSARY



msi



Official Partner

AMG
MOTORSPORT