



# Windows 8 UEFI BIOS Update (Step-by-Step Guide)

## **IMPORTANT!**

Only update your bios if system is unstable, or bug fixes provided correspond to your needs. Flashing the bios incorrectly has risk to brick your system. See to it that the guide will be followed step-by-step.

### **Things to prepare:**

- USB Flash Drive
- Laptop/NB system
- NB default power supply
- Internet connection

## **Part 1: Creating EFI Bootable Flash Drive**

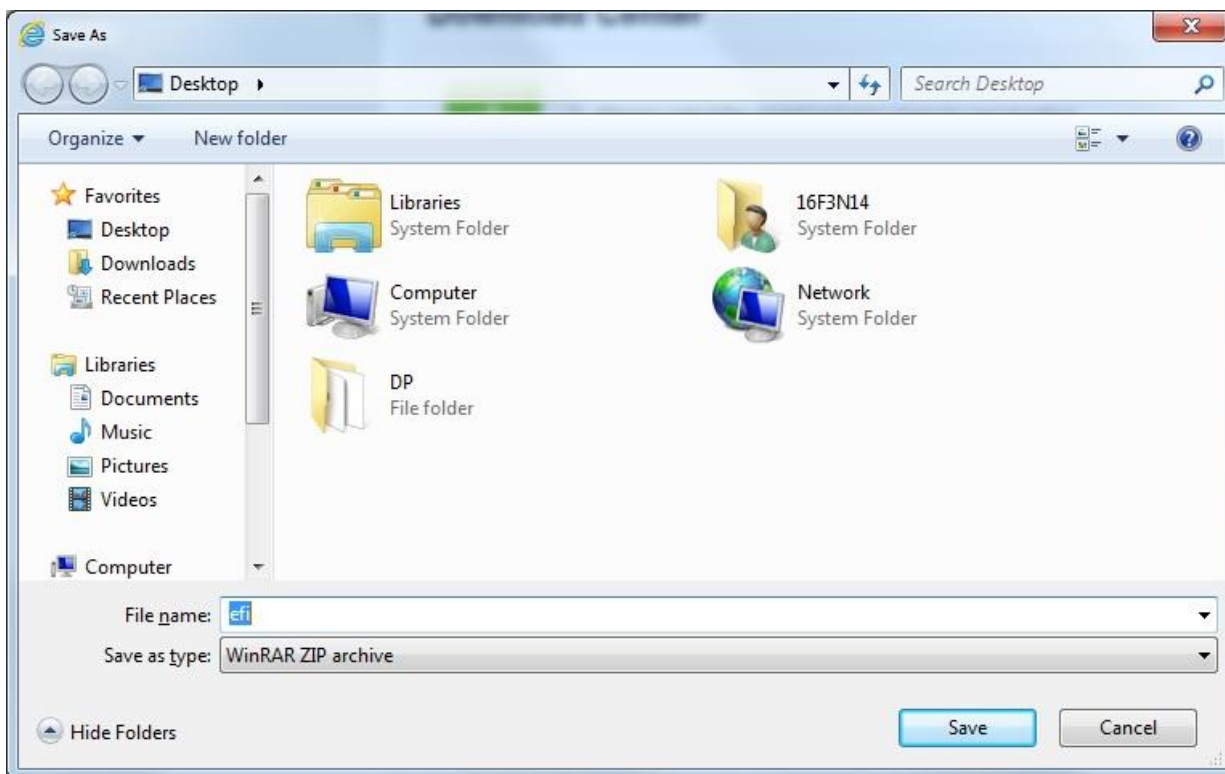
### **Procedures:**

1. Connect your USB Thumb Drive to your computer and format it using FAT32.

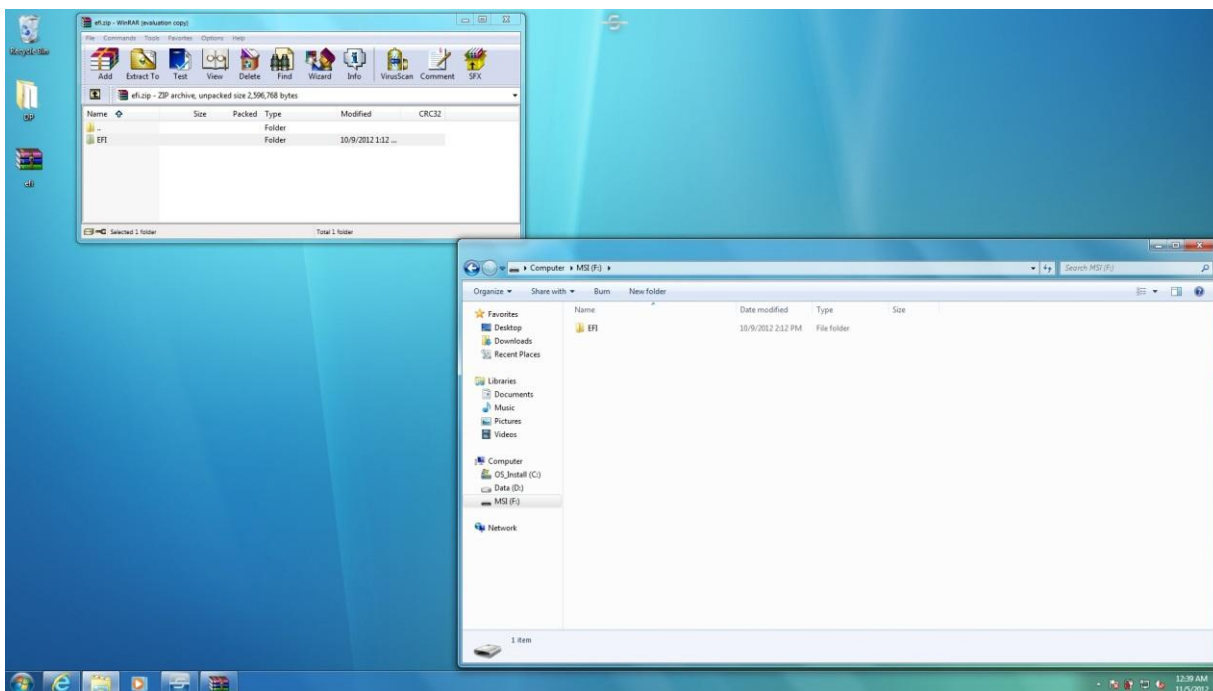
2. Download the file from the link provided below:

[http://download.msi.com/nb\\_drivers/ap/efi.zip](http://download.msi.com/nb_drivers/ap/efi.zip)

3. Select “Save as”.
4. Save the file “EFI.ZIP” on your Desktop.



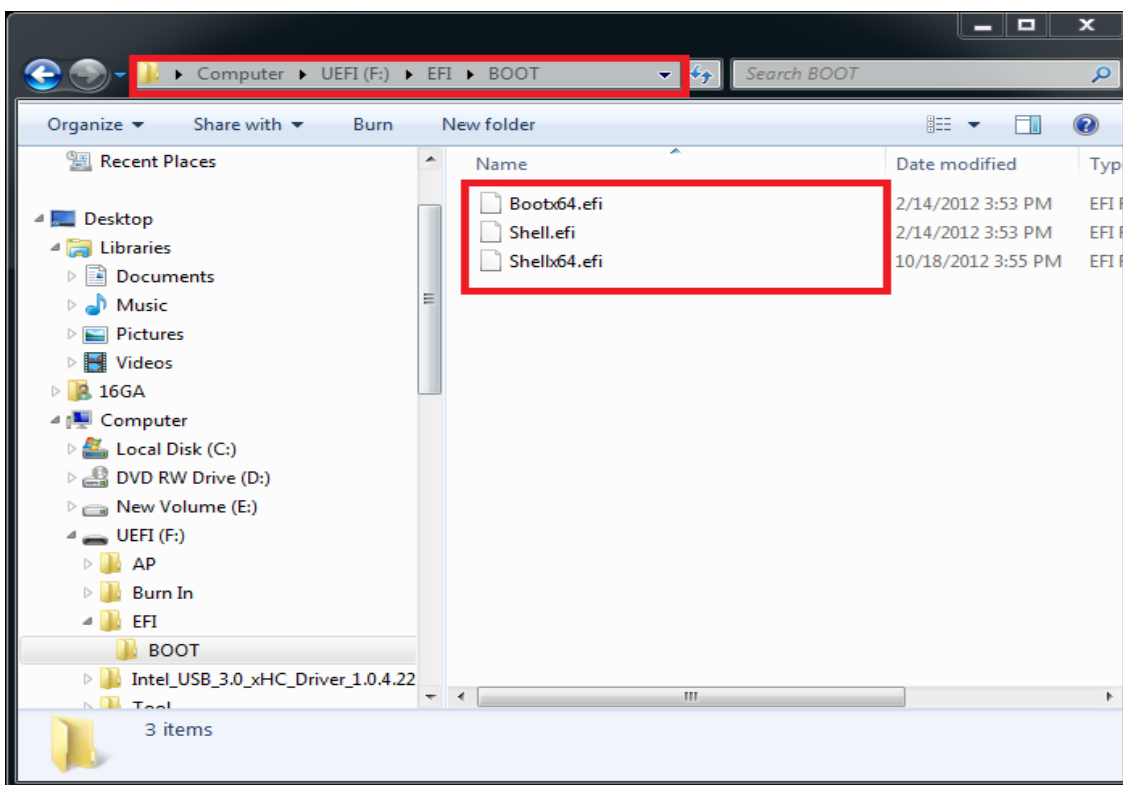
5. Extract the files from EFI.ZIP to the root directory of your USB drive (should be formatted to FAT32).



**Note1:** Please place the EFI folder to the correct path, or it will not be bootable correctly.

**Note2:** The following files should be in X:\EFI\BOOT (replace X with the drive letter of your USB drive):

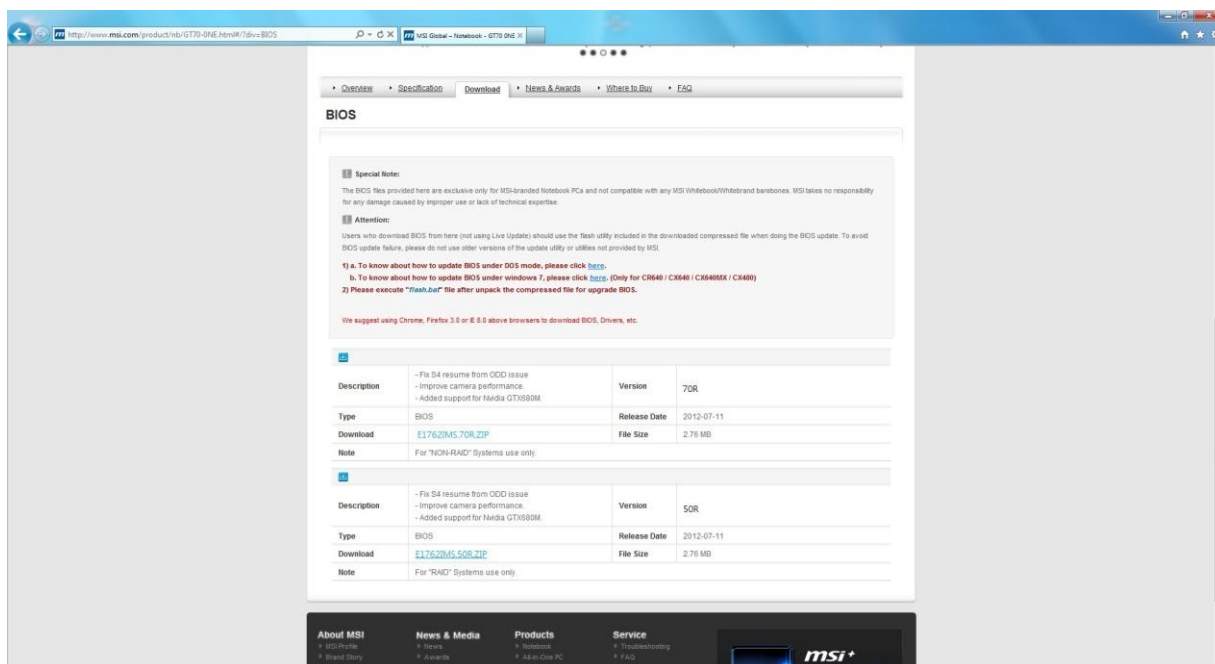
Bootx64.efi  
Shellx64.efi  
Shell.efi



6. Now you have successfully created a bootable EFI Flash Drive.

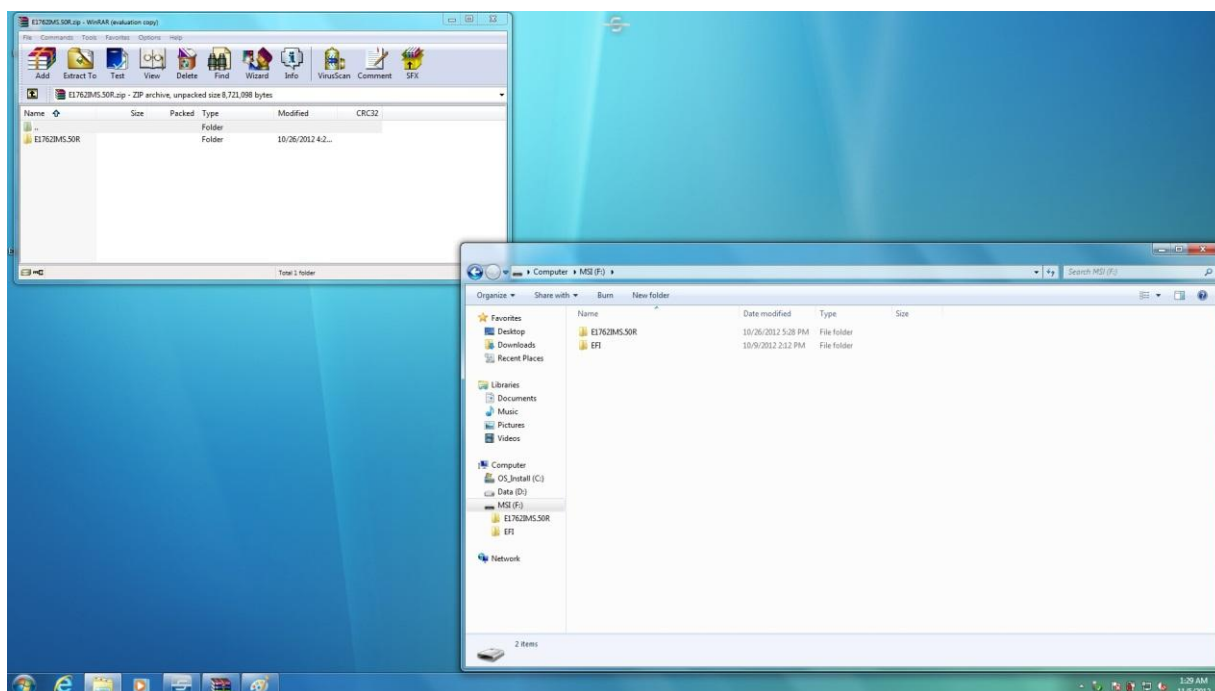
## Part 2: Flashing Win8 UEFI Bios

1. Visit MSI official website and download the corresponding Win8 bios of your system.

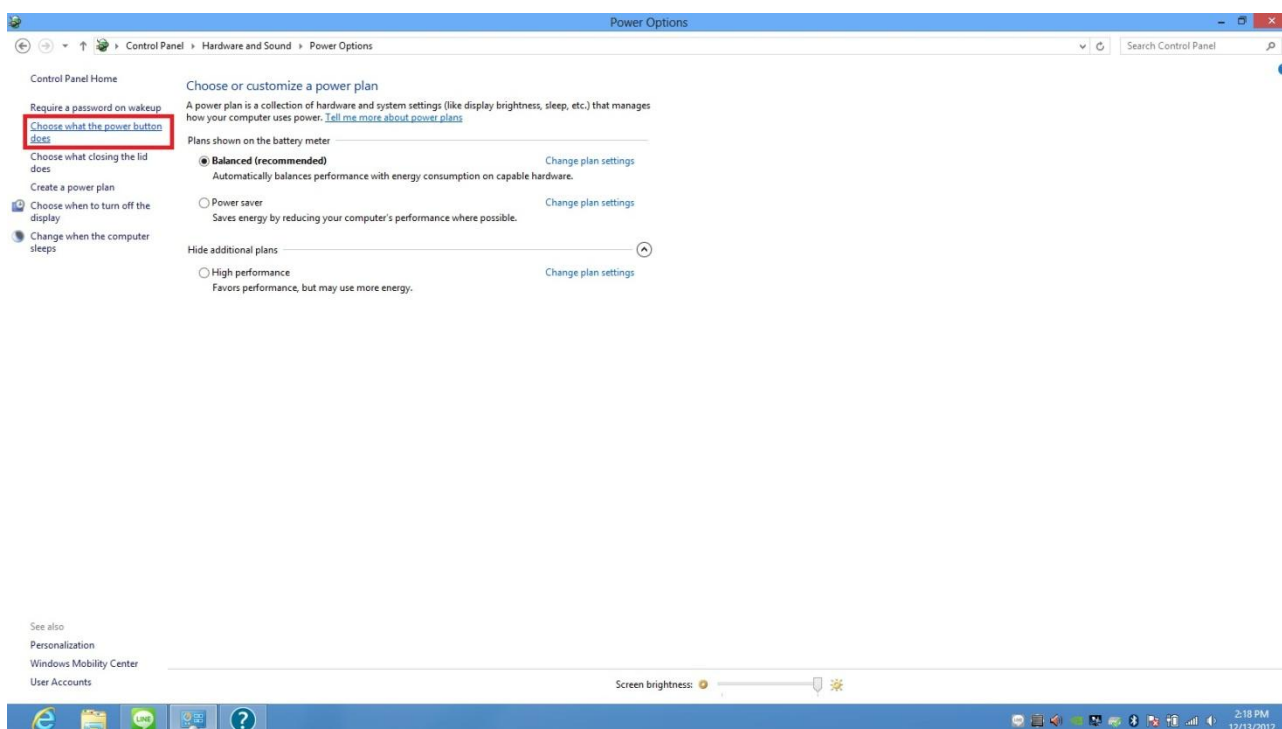


2. Extract the downloaded file to the root directory of your USB drive.

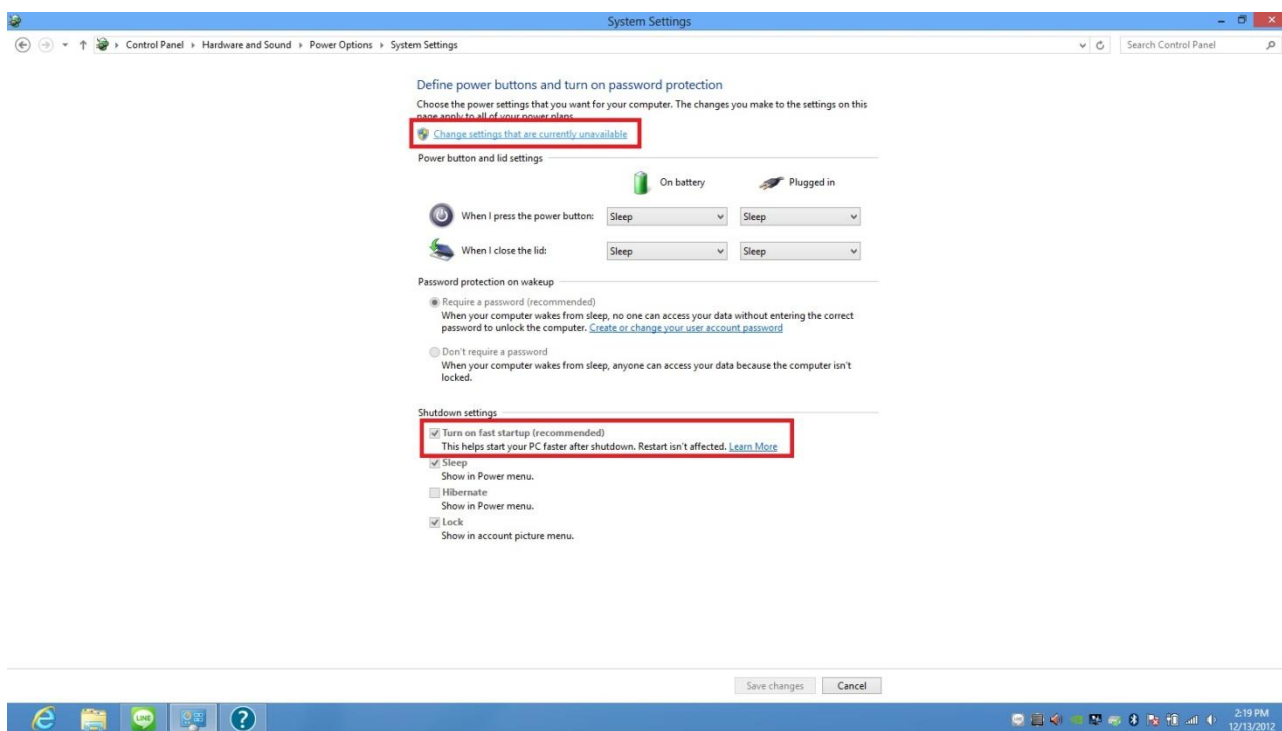
Note: The USB drive is the same drive used in Part 1.



- Please go to “Control Panel > Hardware and Sound > Power Options”, and select “Choose what the power button does”

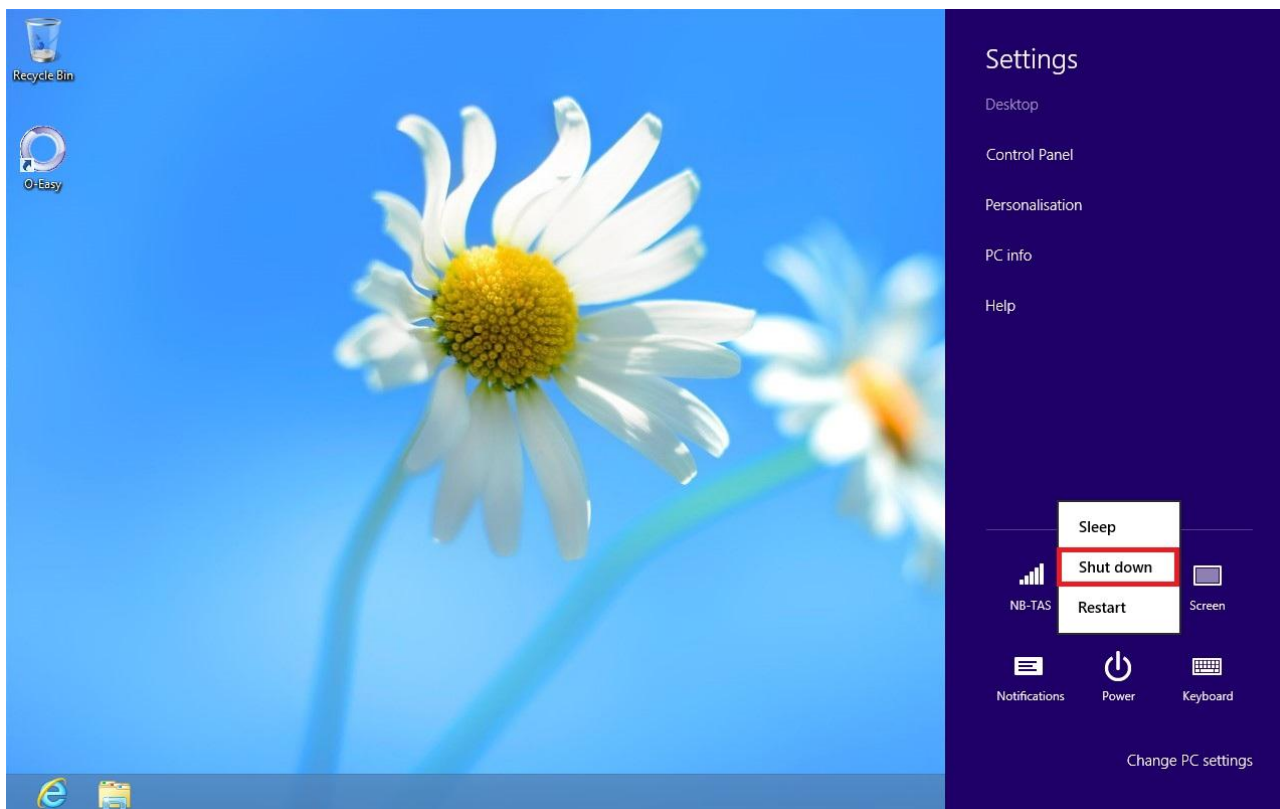


- Select “Change settings that are currently unavailable” first, and uncheck “Turn on fast startup (recommended)”. Select “Save changes” to continue.



**Note:** If you want to use the fast startup function, you can go back here to check it on again after the BIOS is updated.

5. If above steps are finished, please shut down the system directly.

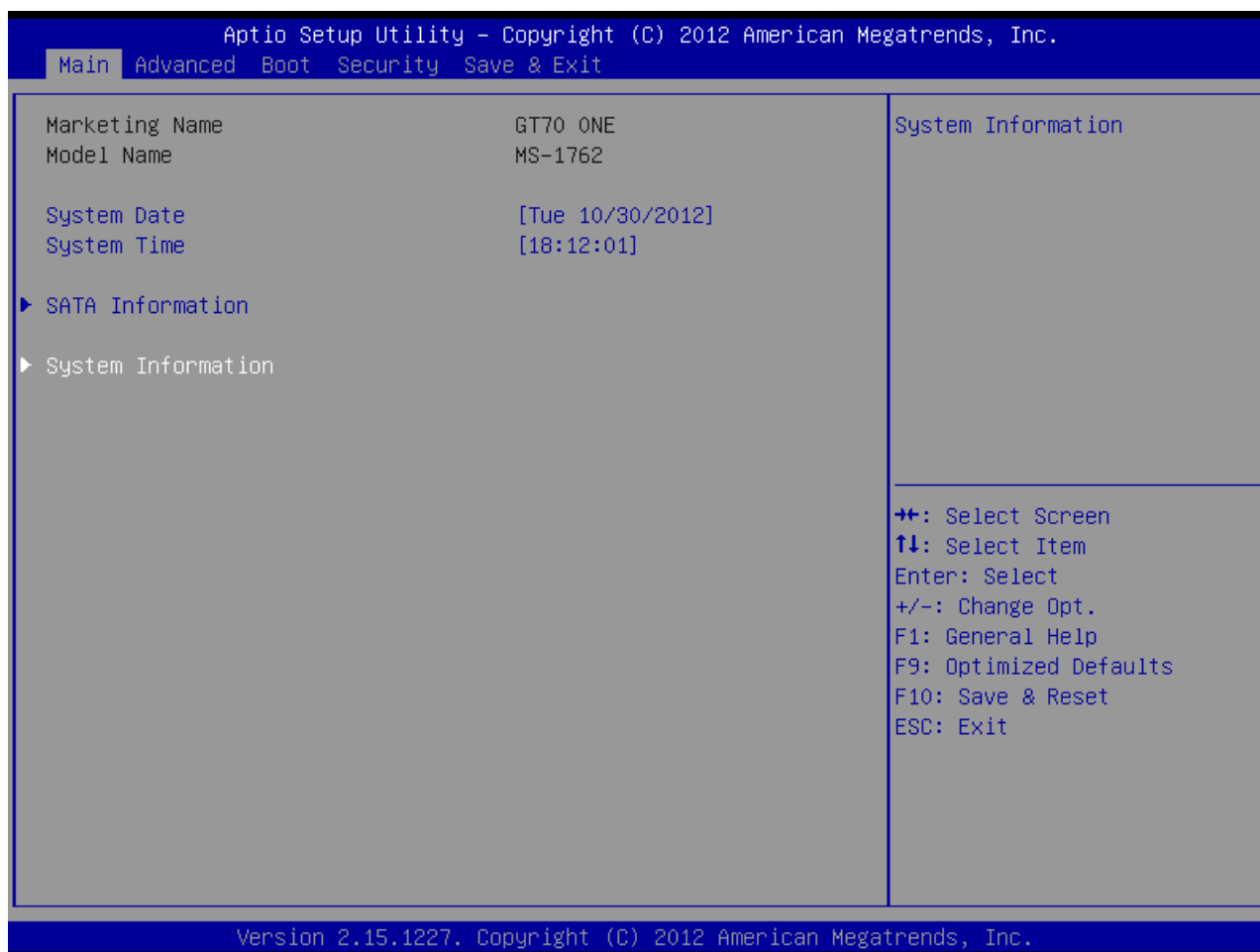


6. Power up your NB by plugging in power adapter. Make sure that NB is running AC power during the entire bios update process.

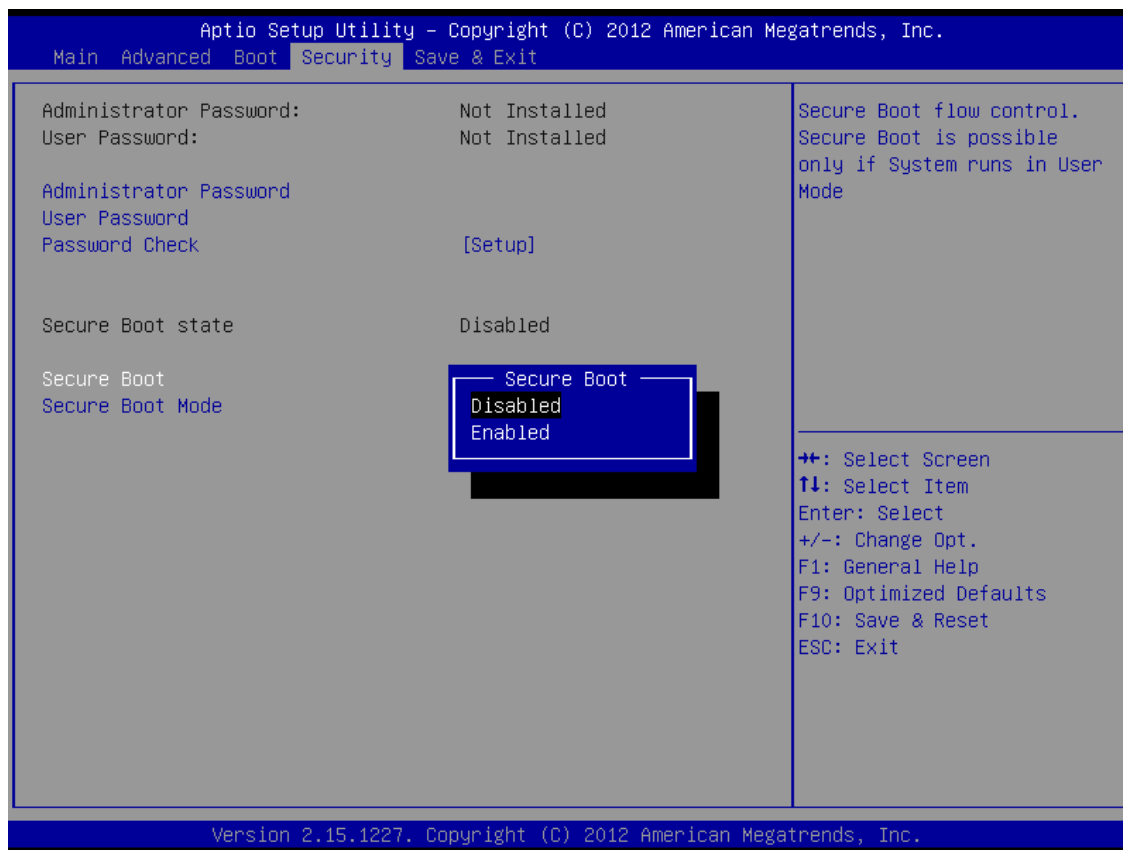


7. Power on NB and continue pressing “DEL” once MSI logo is displayed, until you are prompted to bios screen. See figure below:

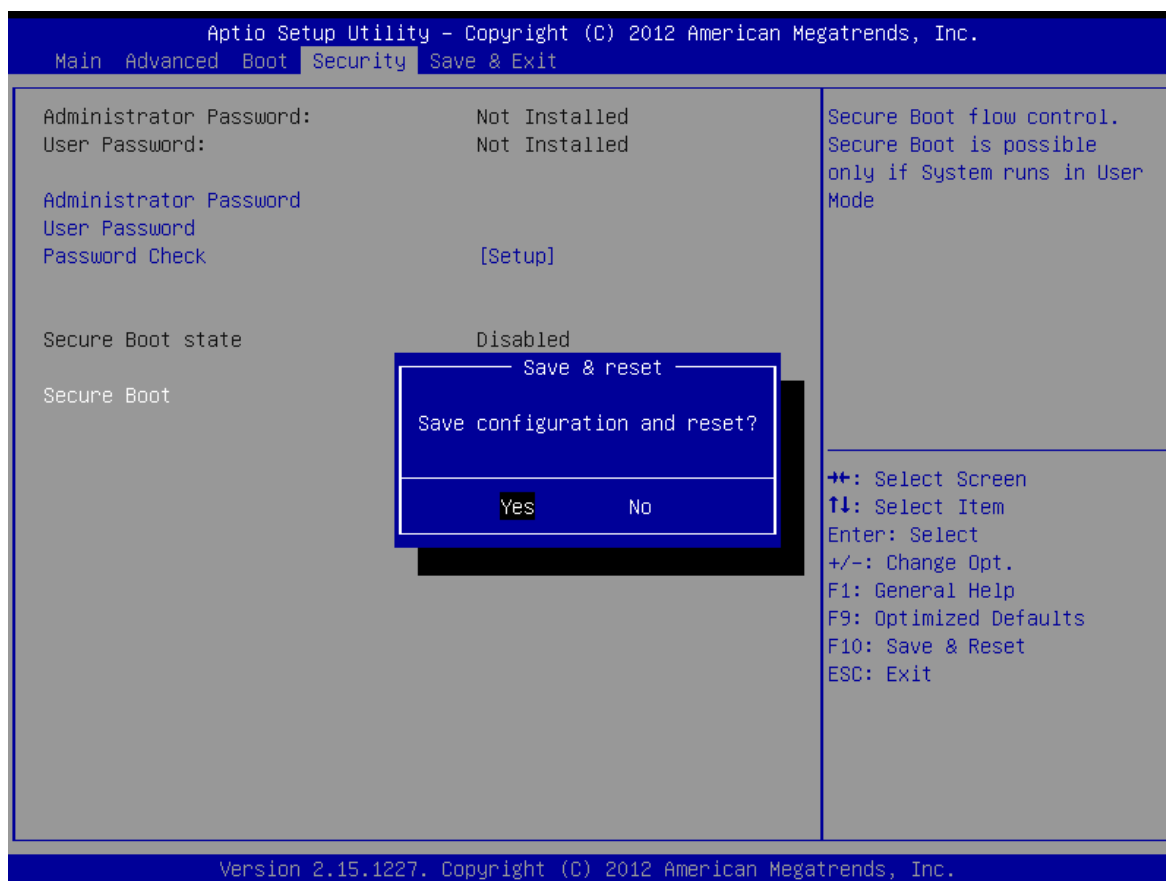




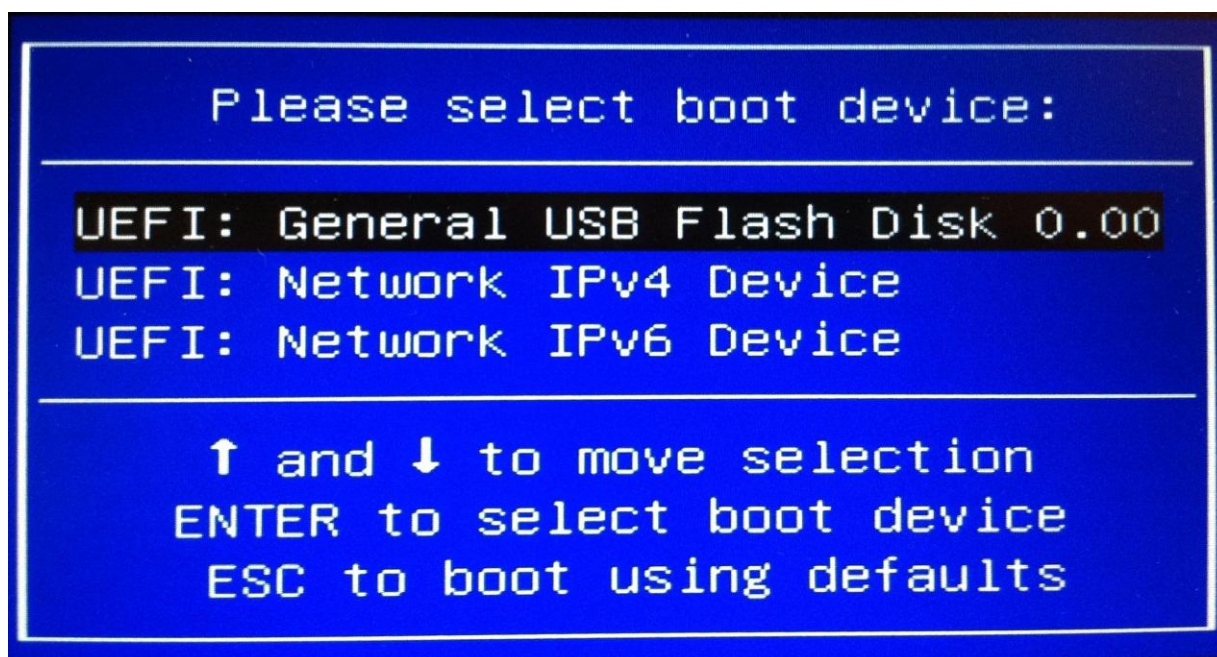
8. Under Security tab, look for the option "Secure Boot" and set it to "Disabled"



10. Press "F10" to save and exit.



11. After system restarts, press function key “F11” to enter boot device menu. Select your USB device by pressing the arrow up/down key, then press enter.



12. As system enters UEFI mode. Look for the location of “Removable HardDisk”. In this case, my usb driver is using “fs4” as its directory.

```

Current running mode 1.1.2
Device mapping table
fs0 :HardDisk - Alias hd28b65535a1 blk0
      PciRoot(0x0)/Pci(0x1f,0x2)/Sata(0x1,0x0)/HD(1,MBR,0xe69d74dc,0x800,0x15cf800)
fs1 :HardDisk - Alias hd28b65535a2 blk1
      PciRoot(0x0)/Pci(0x1f,0x2)/Sata(0x1,0x0)/HD(2,MBR,0xe69d74dc,0x15d0000,0x32000)
fs2 :HardDisk - Alias hd28b65535a3 blk2
      PciRoot(0x0)/Pci(0x1f,0x2)/Sata(0x1,0x0)/HD(3,MBR,0xe69d74dc,0x1602000,0x78f0800)
fs3 :HardDisk - Alias hd28b65535a4 blk3
      PciRoot(0x0)/Pci(0x1f,0x2)/Sata(0x1,0x0)/HD(4,MBR,0xe69d74dc,0x8ef2800,0x50a1800)
fs4 :Removable HardDisk - Alias hd24b0g0b blk4
      PciRoot(0x0)/Pci(0x1d,0x0)/USB(0x1,0x0)/USB(0x6,0x0)/HD(1,MBR,0x80a0bac8,0x3f,0x785bec)
blk0 :HardDisk - Alias hd28b65535a1 fs0
      PciRoot(0x0)/Pci(0x1f,0x2)/Sata(0x1,0x0)/HD(1,MBR,0xe69d74dc,0x800,0x15cf800)
blk1 :HardDisk - Alias hd28b65535a2 fs1
      PciRoot(0x0)/Pci(0x1f,0x2)/Sata(0x1,0x0)/HD(2,MBR,0xe69d74dc,0x15d0000,0x32000)
blk2 :HardDisk - Alias hd28b65535a3 fs2
      PciRoot(0x0)/Pci(0x1f,0x2)/Sata(0x1,0x0)/HD(3,MBR,0xe69d74dc,0x1602000,0x78f0800)
blk3 :HardDisk - Alias hd28b65535a4 fs3
      PciRoot(0x0)/Pci(0x1f,0x2)/Sata(0x1,0x0)/HD(4,MBR,0xe69d74dc,0x8ef2800,0x50a1800)
blk4 :Removable HardDisk - Alias hd24b0g0b fs4
      PciRoot(0x0)/Pci(0x1d,0x0)/USB(0x1,0x0)/USB(0x6,0x0)/HD(1,MBR,0x80a0bac8,0x3f,0x785bec)
blk5 :BlockDevice - Alias (null)
      PciRoot(0x0)/Pci(0x1f,0x2)/Sata(0x1,0x0)
blk6 :BlockDevice - Alias (null)
      PciRoot(0x0)/Pci(0x1f,0x2)/Sata(0x2,0x0)
blk7 :Removable BlockDevice - Alias (null)
      PciRoot(0x0)/Pci(0x1d,0x0)/USB(0x1,0x0)/USB(0x6,0x0)

Press ESC in 1 seconds to skip startup.nsh, any other key to continue.
Shell> _

```

13. Type the command “**fs4:**” then press enter. Once the command switches to the directory to your USB flash drive, type the command “**ls**” to show the list of files inside the USB flash drive.

```

blk2 :HardDisk - Alias hd28b65535a3 fs2
      PciRoot(0x0)/Pci(0x1f,0x2)/Sata(0x1,0x0)/HD(3,MBR,0xe69d74dc,0x1602000,0x78f0800)
blk3 :HardDisk - Alias hd28b65535a4 fs3
      PciRoot(0x0)/Pci(0x1f,0x2)/Sata(0x1,0x0)/HD(4,MBR,0xe69d74dc,0x8ef2800,0x50a1800)
blk4 :Removable HardDisk - Alias hd24b0g0b fs4
      PciRoot(0x0)/Pci(0x1d,0x0)/USB(0x1,0x0)/USB(0x6,0x0)/HD(1,MBR,0x80a0bac8,0x3f,0x785bec)
blk5 :BlockDevice - Alias (null)
      PciRoot(0x0)/Pci(0x1f,0x2)/Sata(0x1,0x0)
blk6 :BlockDevice - Alias (null)
      PciRoot(0x0)/Pci(0x1f,0x2)/Sata(0x2,0x0)
blk7 :Removable BlockDevice - Alias (null)
      PciRoot(0x0)/Pci(0x1d,0x0)/USB(0x1,0x0)/USB(0x6,0x0)

```

Press ESC in 1 seconds to skip startup.nsh, any other key to continue.

Shell> fs4:

fs4:\> ls

Directory of: fs4:\

```

05/30/12  04:46p <DIR>          0  EFI
10/09/12  02:59p <DIR>          0  SCREEN
10/30/12  06:20p              6,220,854  SaveScreen00.bmp
10/30/12  06:20p              6,220,854  SaveScreen01.bmp
10/30/12  06:20p              6,220,854  SaveScreen02.bmp
10/30/12  06:21p              6,220,854  SaveScreen03.bmp
10/26/12  04:28p <DIR>          0  E1762IMS.50R
      4 File(s)  24,883,416 bytes
      3 Dir(s)

```

fs4:\> \_

14. Access the contents of the bios folder by typing the command “cd” then the bios folder name. In my case, the folder is named as “E1762IMS.50R”, so I will type the command “cd E1762IMS.50R”. Afterwards, type the command “ls” to view the files inside the bios folder.

```

fs4:\> ls
Directory of: fs4:\

    05/30/12   04:46p <DIR>                0  EFI
    10/09/12   02:59p <DIR>                0  SCREEN
    10/30/12   06:20p                   6,220,854  SaveScreen00.bmp
    10/30/12   06:20p                   6,220,854  SaveScreen01.bmp
    10/30/12   06:20p                   6,220,854  SaveScreen02.bmp
    10/30/12   06:21p                   6,220,854  SaveScreen03.bmp
    10/26/12   04:28p <DIR>                0  E1762IMS.50R
          4 File(s)  24,883,416 bytes
          3 Dir(s)

fs4:\> cd e1762ims.50r

fs4:\E1762IMS.50R> ls
Directory of: fs4:\E1762IMS.50R

    10/30/12   06:10p <DIR>                0  .
    10/30/12   06:10p <DIR>                0  ..
    08/17/12   12:18p      r             332,400  AfuEfix64.efi
    10/26/12   03:46p                   8,388,608  E1762IMS.50R
    10/26/12   04:28p                   43  FLASH.NSH
    10/26/12   04:28p                   47  FLASH_ME.NSH
          4 File(s)   8,721,098 bytes
          2 Dir(s)

fs4:\E1762IMS.50R> _

```

15. Type “**flash**” to execute bios update.

```

10/26/12  04:28p                43  FLASH.NSH
10/26/12  04:28p                47  FLASH_ME.NSH
      4 File(s)    8,721,098 bytes
      2 Dir(s)

fs4:\E1762IMS.50R> flash
flash> AfuEfix64.efi E1762IMS.50R /p /b /n /k /r
+-----+
|               AMI Firmware Update Utility  v3.03.00               |
|      Copyright (C)2012 American Megatrends Inc. All Rights Reserved.      |
+-----+
Reading flash ..... done
- ME Data Size checking . ok
Secure Flash enabled, recalculate ROM size with signature...
- FFS checksums ..... ok
Loading capsule to secure memory buffer ... done
Erasing Boot Block ..... done
Updating Boot Block ..... done
Verifying Boot Block ..... done
Erasing Main Block ..... done
Updating Main Block ..... done
Verifying Main Block ..... done
Erasing NVRAM Block ..... done
Updating NVRAM Block ..... done
Verifying NVRAM Block ..... done
Erasing NCB Block ..... done
Updating NCB Block ..... done
Verifying NCB Block ..... done

fs4:\E1762IMS.50R> _

```

**Note: Note:** Please maintain the power supply during the updating.

16. Once bios flashing is done, type the command “**reset**” then press enter.

```

10/26/12  04:28p                43  FLASH.NSH
10/26/12  04:28p                47  FLASH_ME.NSH
      4 File(s)    8,721,098 bytes
      2 Dir(s)

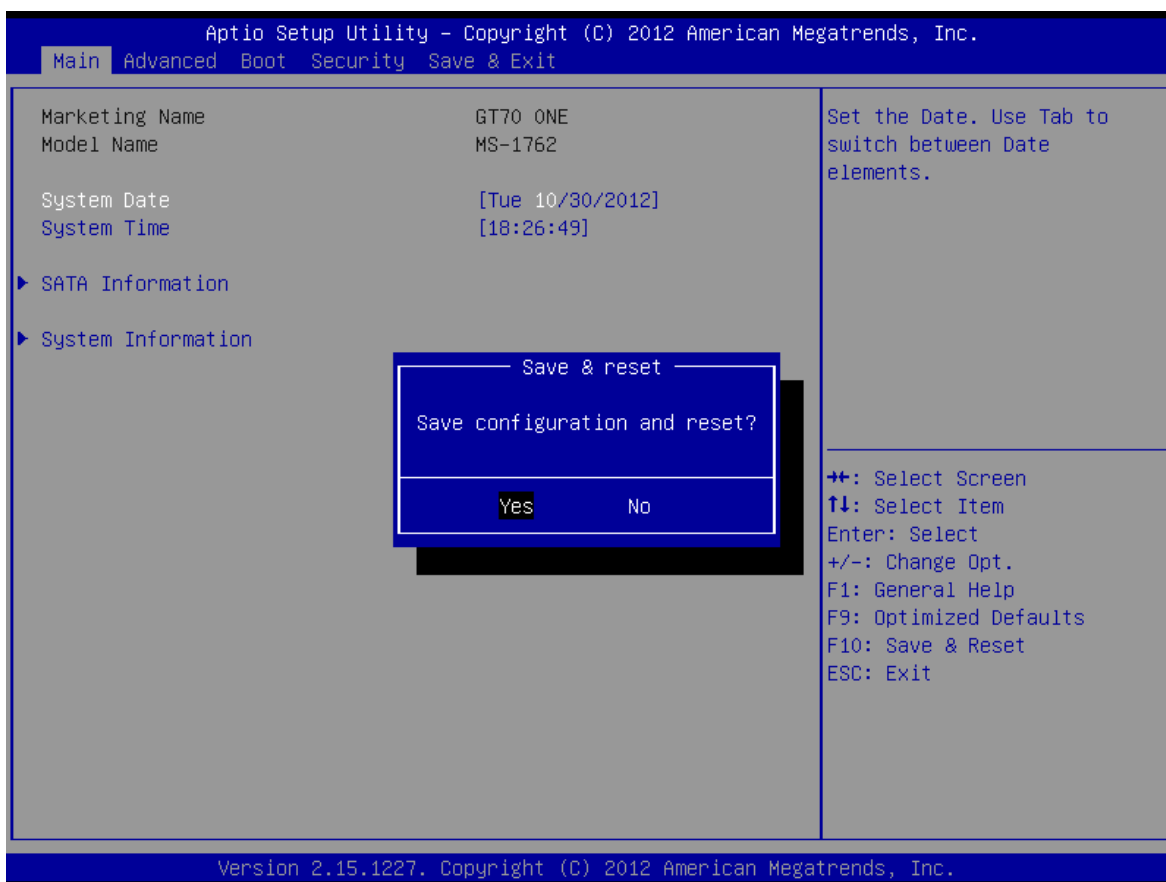
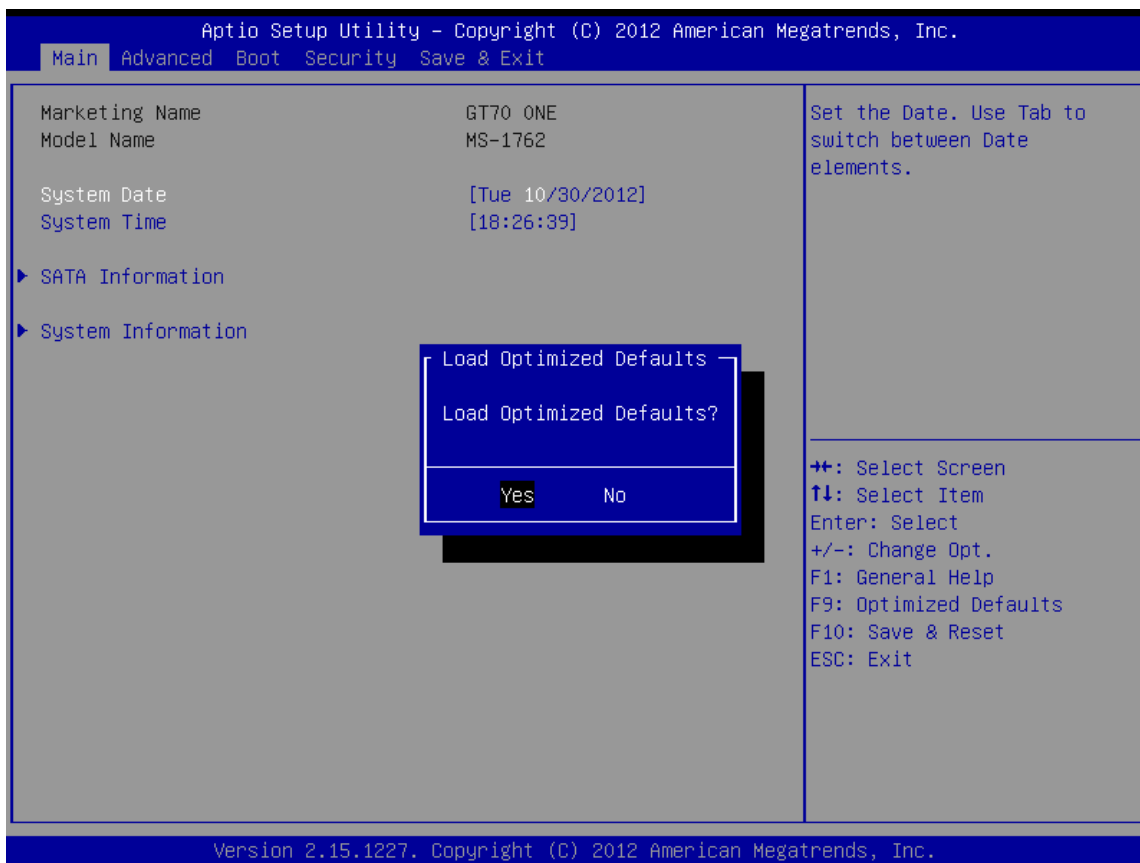
    保存屏幕
fs4:\E1762IMS.50R> flash
flash> AfuEfixEfi E1762IMS.50R /p /b /n /k /r
+-----+
|               AMI Firmware Update Utility  v3.03.00               |
|      Copyright (C)2012 American Megatrends Inc. All Rights Reserved.      |
+-----+

Reading flash ..... done
- ME Data Size checking . ok
Secure Flash enabled, recalculate ROM size with signature...
- FFS checksums ..... ok
Loading capsule to secure memory buffer ... done
Erasing Boot Block ..... done
Updating Boot Block ..... done
Verifying Boot Block ..... done
Erasing Main Block ..... done
Updating Main Block ..... done
Verifying Main Block ..... done
Erasing NVRAM Block ..... done
Updating NVRAM Block ..... done
Verifying NVRAM Block ..... done
Erasing NCB Block ..... done
Updating NCB Block ..... done
Verifying NCB Block ..... done

fs4:\E1762IMS.50R> reset_

```

17. Once system restart and you see bios post logo, press “DEL” to enter bios set-up. Afterwards, press function key “F9” to load bios optimized defaults. Then followed by pressing function key “F10” to save and exit



Now, your Windows 8 bios has been successfully updated. Enjoy!