



# PRO Series

## LCD Monitor

Modern MD272UPHG(3PB1)  
Modern MD272UPHGDE(3PB1)  
Service Guide

# Contents

Copyright and Trademarks Notice .....	4
Revision .....	4
How to Use this Service Guide .....	4
Safety Instructions .....	5
Power .....	5
Environment .....	5
Conditional Warranty Service .....	6
Upgrade and Service .....	6
Publicly Available Service Information .....	7
Disassembly& .....	9
Assembly .....	9
Product Components and Accessories .....	10
Product Upgradeability and Repairability .....	11
Recommended Tools .....	12
Screw List .....	12
Preparation for Disassembly .....	13
The Stand .....	14
Stand Disassembly .....	14
Stand Assembly .....	15
The Sump .....	14
Sump Disassembly .....	14
Sump Assembly .....	15
RearCover .....	16
Rear Cover Disassembly .....	18
Rear Cover Assembly .....	22
LCD Panel & Shielding Cover .....	25
LCD Panel & Shielding Cover Disassembly .....	25
LCD Panel & Shielding Cover Assembly .....	27
Mainboard&Power Board .....	29

<a href="#">Components</a>	<a href="#">EOL Instructions</a>	
Mainboard&Power Board Disassembly .....		29
Mainboard&Power Board Assembly .....		31
Navi Board & Navi Key&Power Indicator Board .....		34
Navi Board & Navi Key &Power Indicator Board Disassembly .....		34
Navi Board & Navi Key &Power Indicator Board Assembly .....		36
Speakers .....		38
Speaker Disassembly .....		38
Speaker Assembly .....		39
Deco Strip .....		40
.....		40
Deco Strip Assembly .....		42
Powering Up After Maintenance .....		43
Troubleshooting .....		44
Recycling Guidelines .....		45
The Stand .....		45
Rear Cover .....		52
Deco Strip & LCD Bezel .....		53
Product End-of-Life Instructions .....		55
Purpose .....		55
Information on Component and Material Identification .....		55
Product Take-Back Service .....		56
OSD Setup .....		57
Navi Key .....		58
OSD Menus .....		59
Professional .....		60
Image .....		62
Input Source .....		63
PIP/PBP .....		64
Navi Key .....		65
Settings .....		65

# Copyright and Trademarks Notice

Copyright © 2024 Micro-Star Int'l Co., Ltd. All rights reserved.

The MSI logo used is a registered trademark of Micro-Star Int'l Co., Ltd. Third-party trademarks and names are the properties of their respective owners. No warranty as to accuracy or completeness is expressed or implied. MSI reserves the right to make changes to this document without prior notice.

## Revision

V1.0, 2024/09

## How to Use this Service Guide

This Service Guide provides in-depth illustration of disassembling/assembling the product. Since the topics in this guide may be related, it is recommended that you read it from cover to cover first. After that, you may go directly to any specific topic that most meets your immediate needs.

# Safety Instructions

Adhere to safety precautions when handling the product to prevent harm or damage to individuals or the product's functionality.

## Power

- If the power cord comes with a 3-pin plug, do not disable the protective earth pin from the plug. The monitor must be connected to an earthed mains socket-outlet.
- Disconnect all power sources and place the product on a steady surface before disassembly/assembly.
- When unplugging the power cord, always hold the connector part of the cord. Never pull the cord directly.
- Place the power cord in a way that people are unlikely to step on it. Do not place anything on top of the power cord.
- If this product comes with an adapter, use only the MSI provided AC adapter approved for use with this product.

## Environment

- Do not place the product in environments subject to mist, smoke, vibration, excessive dust, salty or greasy air, or other corrosive gases and fumes.
- To avoid electrostatic discharge, use an anti-static wrist strap before handling components. Always handle electrostatic-sensitive components, parts, and assemblies only at static-free work areas.
- Handle components with care. Do not touch the pins or contacts on a component.
- Place components on a grounded anti-static pad or on the bed that came with the components whenever the components are separated from the product.
- Handle the display panel with extra care as it is fragile and could break.
- Do not perform any maintenance with wet hands.
- Prevent foreign substances, such as water, other liquids or chemicals, from entering the product while performing disassembly/assembly.
- After assembly, ensure that all screws are replaced and no stray screws remain inside the product.

## Conditional Warranty Service

MSI provides a conditional warranty service for selected models. Please visit [MSI Online Customer Service](#) for further information.

## Upgrade and Service

Available hardware features may only be offered as part of an upgrade, repair, or replacement service offered by MSI or an authorized service provider.

MSI offers customers replacement parts, product repair and services for 3 years from the date of sale for all EPEAT-registered products.

Damages caused by servicing of products not authorized by MSI or the use of modified or non-MSI authorized parts or components are not covered by MSI Limited Warranty Agreement.

Visit [MSI Service Location](#) to obtain these services offered by MSI.

Go to [MSI Web Ticket](#) to receive further assistance if needed.

# Publicly Available Service Information

Service Information	Section
Disassembly instructions including identifying the required tools.	<a href="#">Product Components and Accessories</a> <a href="#">Recommended Tools</a>
Exploded diagram of parts.	<a href="#">Product Components and Accessories</a>
List of spare parts including manufacturer-approved spare parts and how to obtain them.	<a href="#">Product Upgradeability and Repairability</a>
Maintenance procedures or guidance on where to obtain the procedures.	<a href="#">Monitor Support</a> <a href="#">OSD Setup</a>
Troubleshooting instructions, software diagnostic tools, troubleshooting videos or other troubleshooting guidance.	<a href="#">Troubleshooting</a>
Instructions on how to obtain software updates (not applicable to display products).	N/A
Instructions on how the user can remove personal data. If the instructions require destruction of the storage, instructions to replace the storage shall be provided (not applicable to display products).	N/A

It is acceptable for service instructions to exclude information that, as determined by the manufacturer:

a) May expose the user to risk of injury, or	N/A
b) Breaches intellectual property rights, or	N/A
c) Compromises user privacy or security, or	N/A
d) Involves the disassembly of a battery pack or power supply	N/A
If claiming any of the four exclusions above the manufacturer shall demonstrate how the product is restored to normal operating condition after being repaired. Repair may include replacement of the component(s) associated with the exclusion.	N/A



# Disassembly & Assembly



# Product Upgradeability and Repairability

Hardware features for upgradeable, repairable or replaceable using only commonly available tools and listing of replaceable spare parts by products can be obtained by contacting [MSI Online Customer Service](#).

For replacement, repair, or upgrade methods, please refer to the [hyperlinks](#) in the table below.

Hardware feature items	Upgradeable	Repairable	Replaceable	Soldering
The main processor(s) or system on a chip (SOC)	No	No	No	Yes
The main memory capacity of the system	No	N/A	N/A	N/A
Mass storage capacity of the system	N/A	N/A	N/A	N/A
Wireless networking capability	N/A	N/A	N/A	N/A
Graphics capability (integrated or discrete)	N/A	N/A	N/A	N/A
<a href="#">Display panel or display assembly</a>	N/A	No	Yes	No
Integrated mechanical keyboards	N/A	N/A	N/A	N/A
All batteries	N/A	N/A	N/A	N/A
<a href="#">All external and internal power supplies</a>	N/A	No	Yes	No
All fan assemblies	N/A	N/A	N/A	N/A
<b>AND At least two of the following (or one, if all remaining are absent from product):</b>	<b>Upgradeable</b>	<b>Repairable</b>	<b>Replaceable</b>	<b>Soldering</b>
<a href="#">Speakers</a>	No	No	Yes	No
Camera	N/A	N/A	N/A	No
Touchpad	N/A	N/A	N/A	N/A
I/O connectors and external power connection	No	No	No	Yes
Readers (eg. magnetic stripe, Dallas key, fingerprint, Smart card)	N/A	N/A	N/A	No

# Recommended Tools

The following tools may be needed while performing the disassembly and assembly procedures.

- Cross-head screwdriver
- Parallel screwdriver (optional)
- Tweezers
- Pry tool
- Diagonal pliers (optional)
- Heat gun (optional)
- Anti-static gloves
- Anti-static wrist strap (optional)
- Anti-static mat with grounding wire (optional)
- Anti-static wrist strap (optional)
- Icon fan (optional)

# Screw List

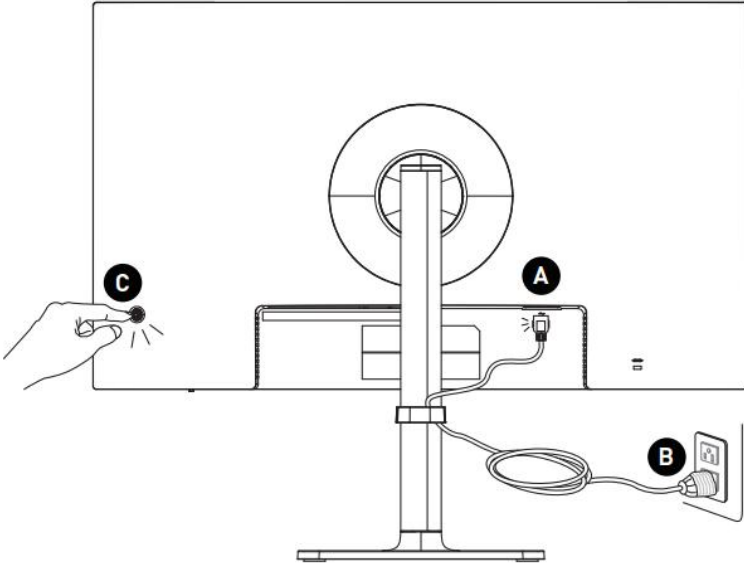
Please refer to the screw list below while proceeding the disassembly and assembly of the computer.

Note: This screw list is for reference only and may vary from models to models. It is highly recommended that users contact the authorized service center for further assistance.

Component	Screw Type	Quantity
Deco strip	M2.5*4	5
Power Board	M3*6	3
Shielding Cover	M3×4	4
Mainboard	M3*6	4

# Preparation for Disassembly

1. Power off the monitor and your computer.
2. Disconnect the power cords of your monitor and PC from the electrical outlet.
3. Disconnect all cables & power cord from the monitor.



## Important

- Disconnect all power sources and place the monitor on a steady surface before disassembly/assembly.
- When unplugging the power cord, always hold the connector part of the cord. Never pull the cord directly.
- Do not place the monitor in environments subject to mist, smoke, vibration, excessive dust, salty or greasy air, or other corrosive gases and fumes.
- To avoid electrostatic discharge, use an anti-static wrist strap before handling electrostatic-sensitive components.
- Handle the display panel with extra care as it is fragile and could break.
- Do not perform any maintenance with wet hands.
- After assembly, ensure that all screws are replaced and no stray screws remain inside the monitor.

# The Stand

## Stand Disassembly

---

1. Place the monitor face down on a steady, protected surface.
2. Toggle the bracket tabs upwards with a little finger pressure **1**.
3. The other hand lifts the brace upwards **2**.



## Stand Assembly

---

1. Place the monitor face down on a steady, protected surface.
2. Bracket lugs are assembled to correspond with the grooves in the back shell..
3. Toggle the bracket tabs upwards with a little finger pre ① .
4. Press down on the bracket with your other hand ② .



# The Sump

## Sump Disassembly

---

1. Turn the screw to the right left.



## Sump Assembly

---

1. Turn the screw to the right until it is tight.



# Rear Cover

## Rear Cover Disassembly

---

1. Turn the rear cover screws to the left and remove the.

**⚠ Important**

- Avoid finger pressure on the screen surface, it may damage the display.



1. Turn the screw on the bottom of the back cover to the left and remove it.



---

3. Use a pry tool to carefully pry off the bottom side of the rear cover.



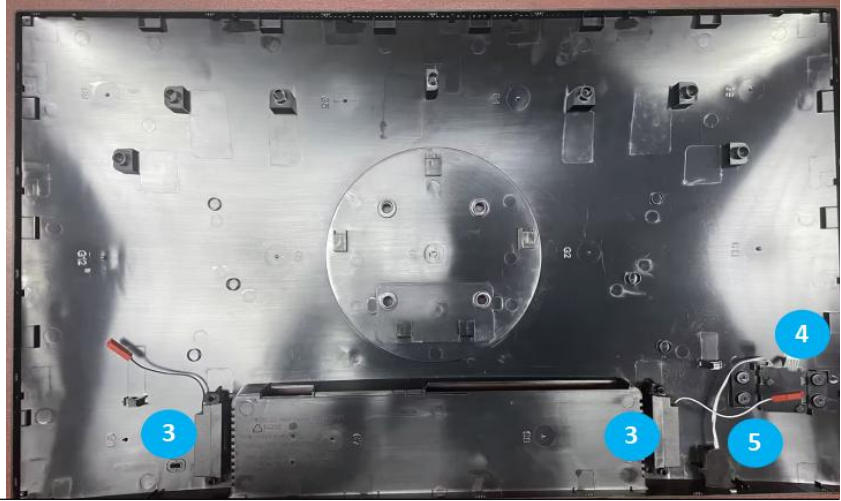
4. Use the prying tool to open the backshell by extending the bottom of the backshell in the order of left, top and right.



5. Gently lift the rear cover upwards and be careful when disconnecting the speaker cable ❶ and connecting cable ❷.



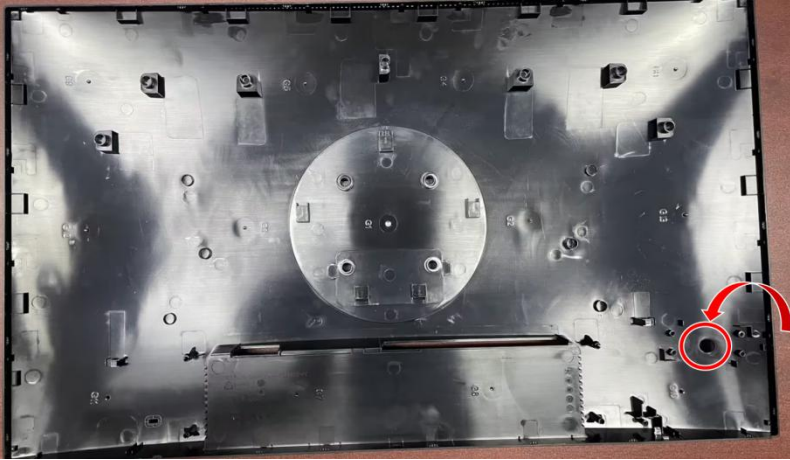
6. Gently remove and dismantle the navigation panel **4** , speaker **3** , light guide pillar **5** and all cables from the rear cover panel.



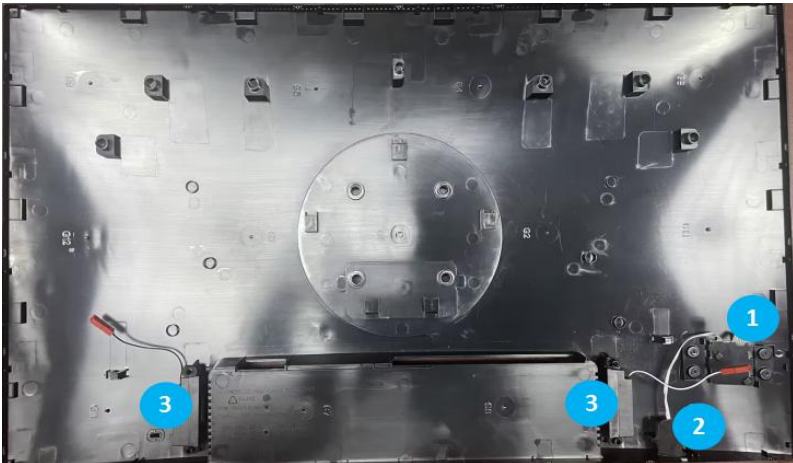
## Rear Cover Assembly

---

1. Insert Navi Key to start assembling the rear cover.



2. Carefully install the navigation board **1**, speaker **3** and light guides **2** in their respective locations and route the wires.



- Carefully connect the speaker cable 5 and connecting cable 4 to the motherboard, and then close the rear cover.



- Align the tabs on the back cover with the slots, and gently press the back cover with both hands, starting from the bottom centre **6** and working in the direction shown in the diagram, until it clicks into place.

**⚠ Important**

- Avoid finger pressure on the screen surface, it may damage the display.

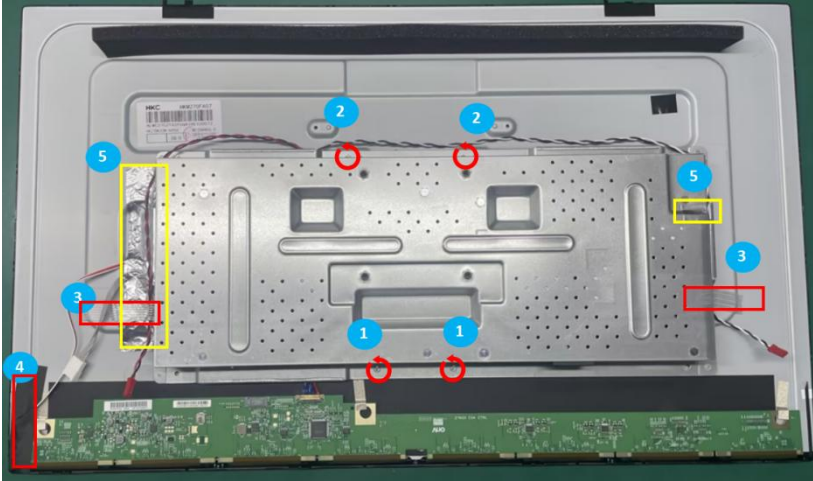


# LCD Panel & Shielding Cover

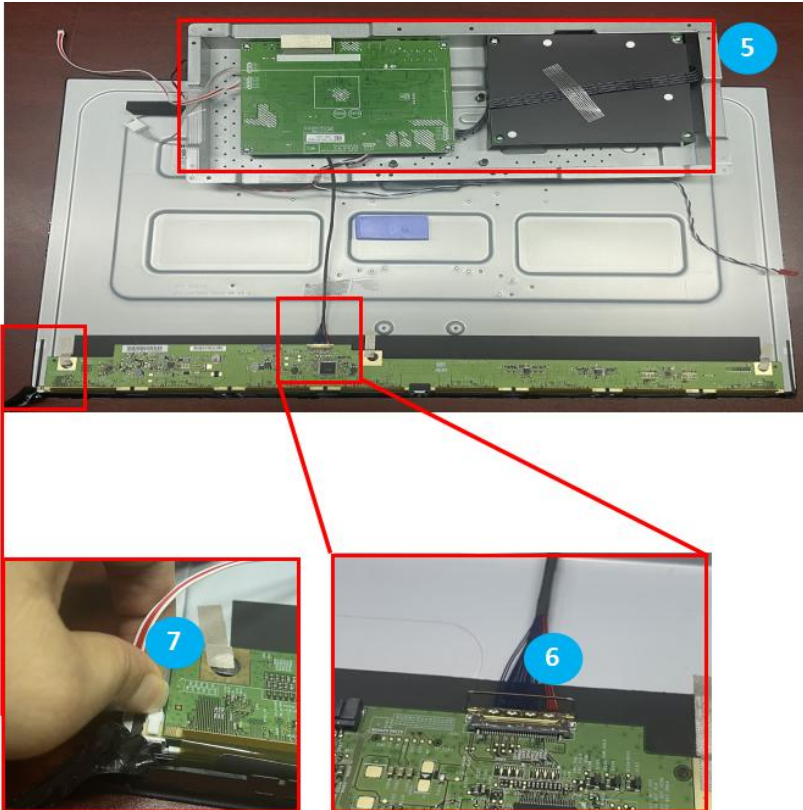
## LCD Panel & Shielding Cover Disassembly

---

1. Remove the shield cover screws **1** and **2** , then remove the fiber tape **3** , acetate tape **4** , and conductive aluminum foil **5** .



- Remove the shield **5** and carefully remove the panel signal cable **6** and LED cable **7**.

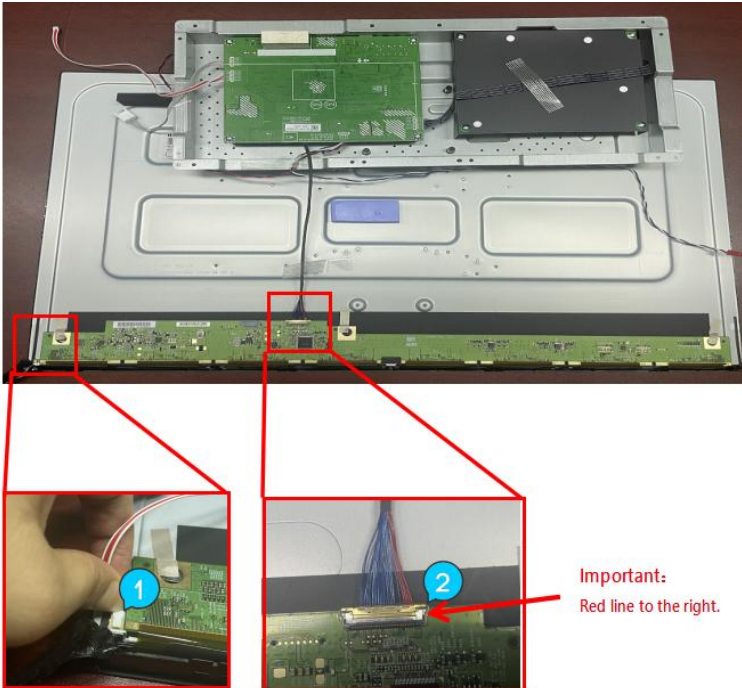


## LCD Panel & Shielding Cover Assembly

---

1. Assembling LED Cables❶, Panel Signal Cables❷, Note Snap Clips Pressing Into Place.

When assembling the panel signal wires, please note that the red wire group must be located on the right side (assembled in the direction shown in the illustration).



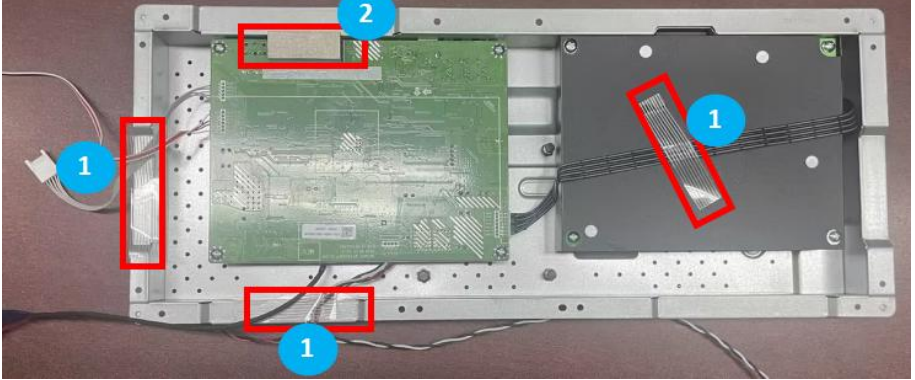


# Mainboard&Power Board

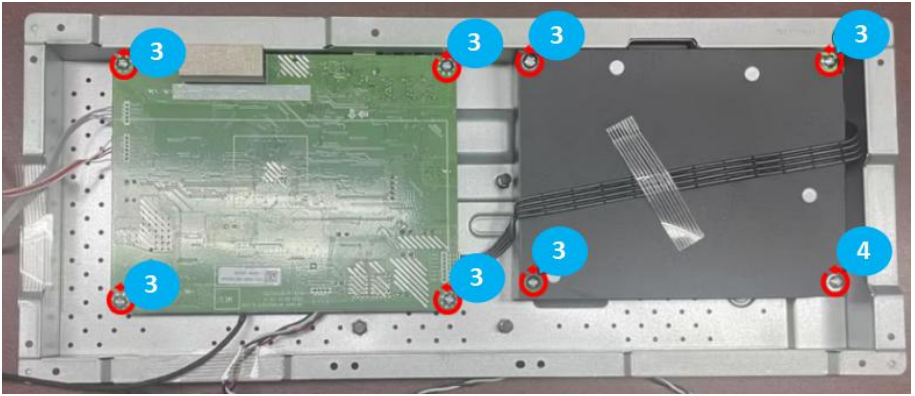
## Mainboard&Power Board Disassembly

---

1. Remove tape ① and conductive foam ②. The one with black PET here is the power board.

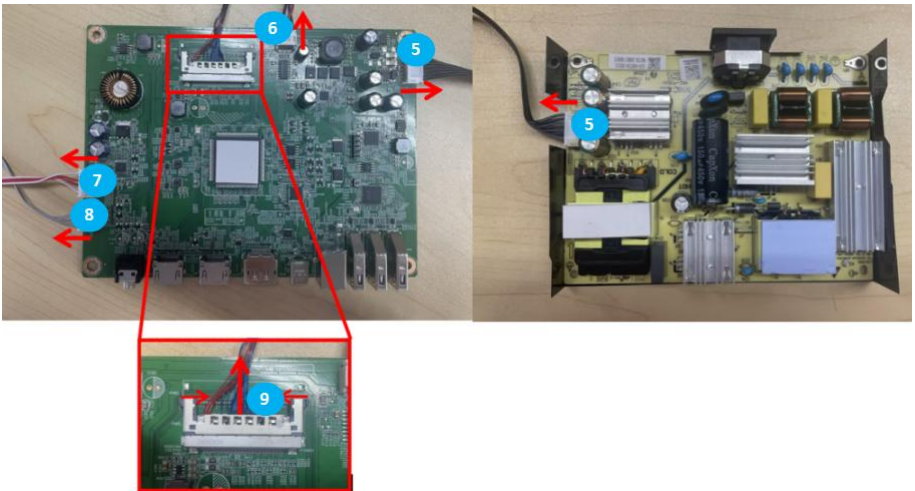


2. Remove the screws ③、④ on the motherboard & power supply board.



3. Carefully remove the power supply board termination cable ⑤, and remove the motherboard termination cable ⑤, speaker cable ⑥, LED light cable ⑦, navigation key cable ⑧, and signal cable ⑨

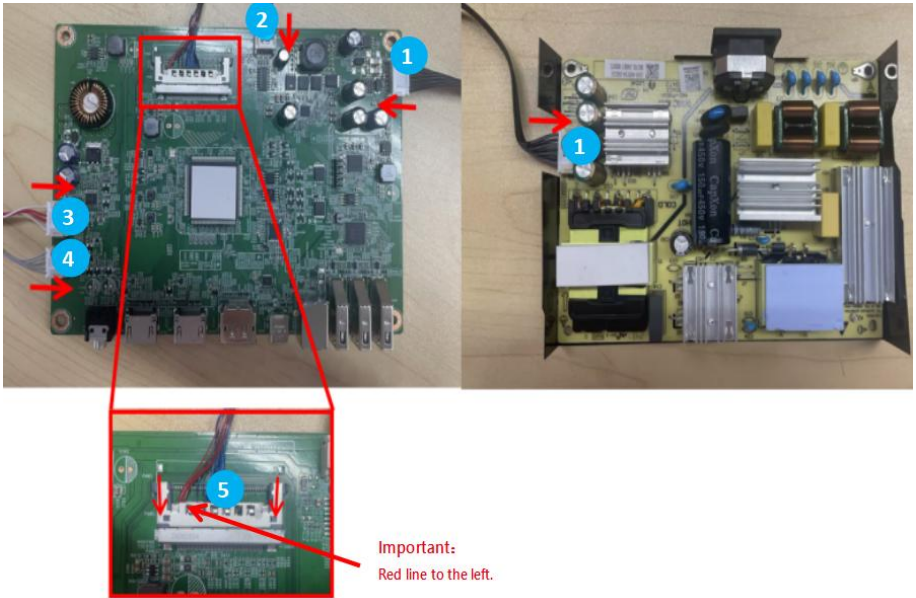
When removing the signal cable ⑨, please note that you need to press the left and right side clips before removing it.



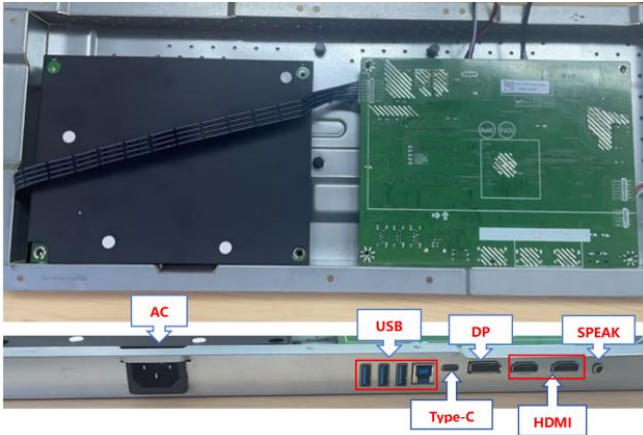
## Mainboard&Power Board Assembly

1. Assemble the connection cable ① to the power board and connect the connection cable ① , speaker cable ② , LED light cable ③ , navigation key cable ④ and motherboard signal cable ⑤ to the motherboard.

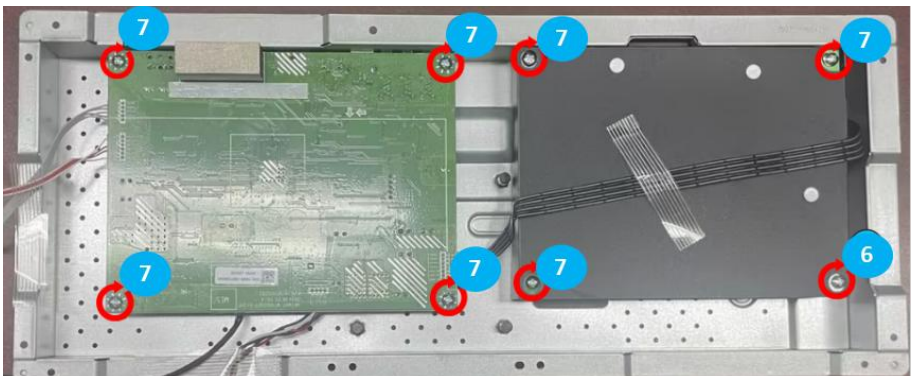
When assembling the signal cable ⑤ Please note that the left and right clips need to be pressed inward at the same time, and the red wire set needs to be located on the left side (in the direction shown in the figure).



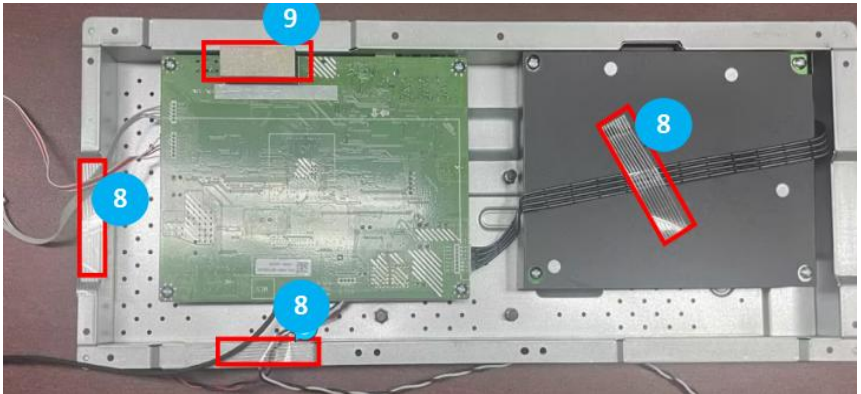
2. Assemble the motherboard and power supply board into the shield, taking care to align the appropriate connectors.



3. Lock motherboard and power supply board screws **6** and **7** in place.



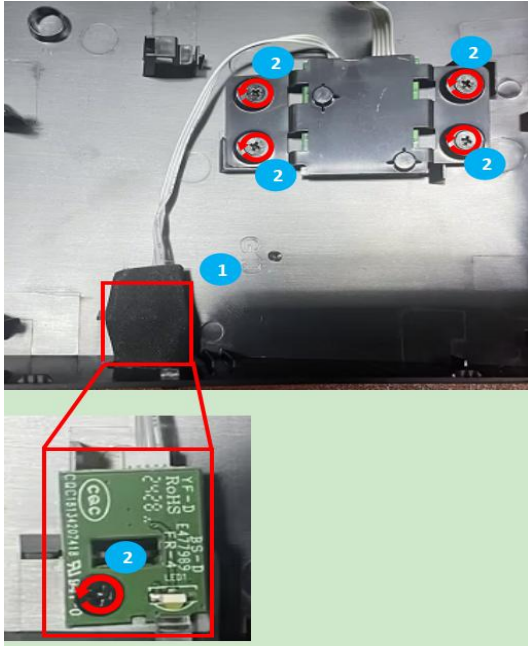
4. Tidy up the wires and attach them in place using tape **8** , attach conductive foam **9** .



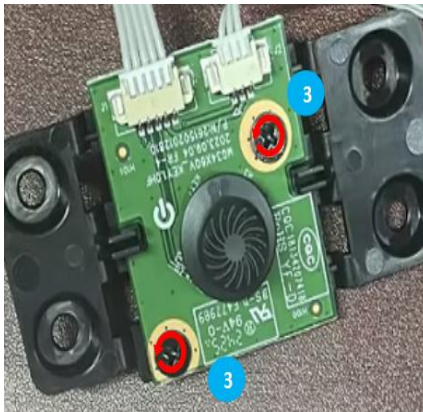
# Navi Board & Navi Key & Power Indicator Board

## Navi Board & Navi Key & Power Indicator Board Disassembly

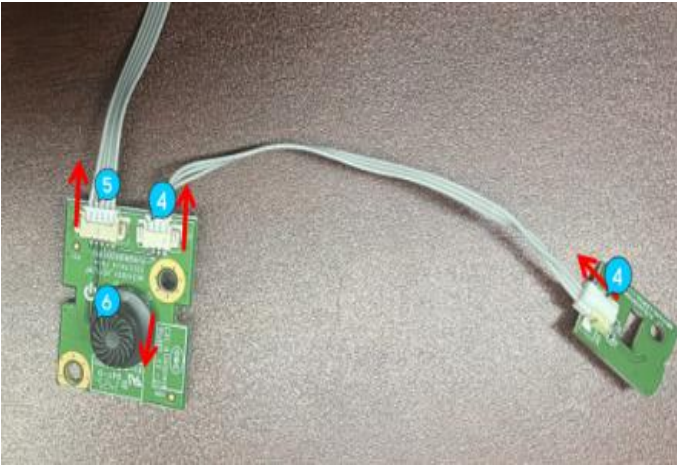
1. Remove high density sponge **1**, then remove screws **2**.



2. Remove screw **3**.



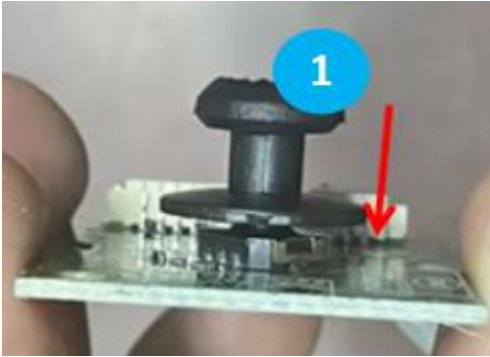
3. Remove the power indicator board connecting cable ④, remove the connecting cables ④ and ⑤ from the navigation board, and then remove the navigation keys ⑥ .



## Navi Board & Navi Key & Power Indicator Board Assembly

---

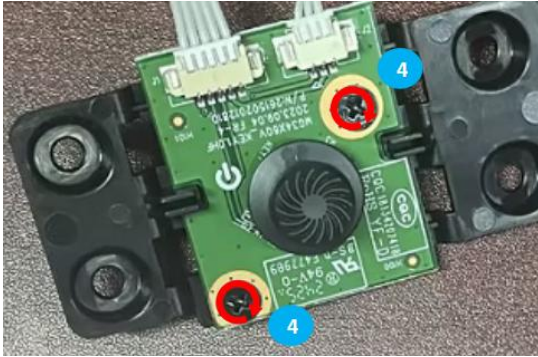
1. Insert Navi Key **1** to start assembling the rear cover.



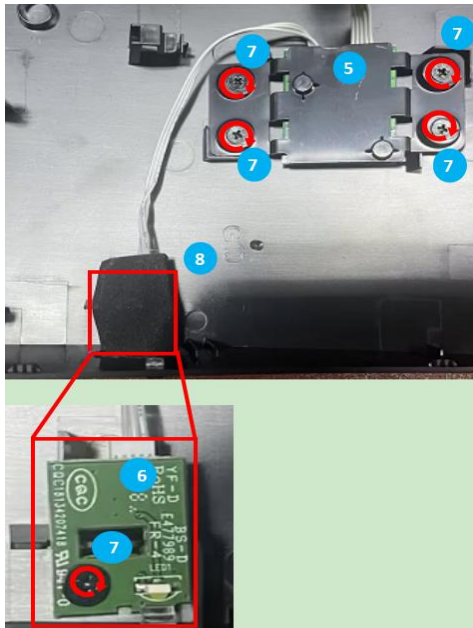
2. Connect connection cables **2** and **3** to the navigation board and the power indicator board



- Align and assemble the navigation keypad to the small back cover, then lock screw 4 in place.



- Assemble the navigation key board 5 and the power indicator board 6 to the rear case, lock the screws 7, and then attach the high density foam 8 in place.

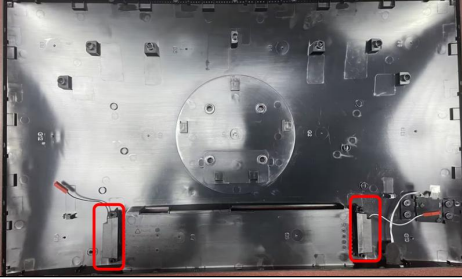


# Speakers

## Speaker Disassembly

---

1. Locate speakers.



2. Remove the damping ring ①, then remove the speaker ② from the positioning post.

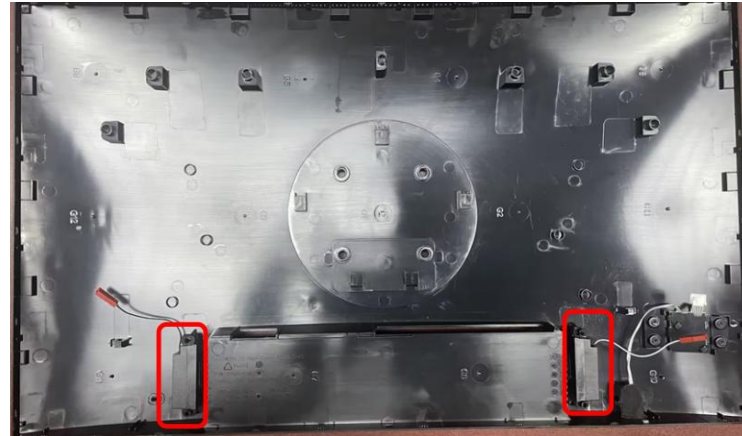


## Speaker Assembly

1. Align and mount the speaker **2** to the locating post before assembling the shock absorber **1** to the locating post.



2. Assembly OK, as shown.



# Deco Strip



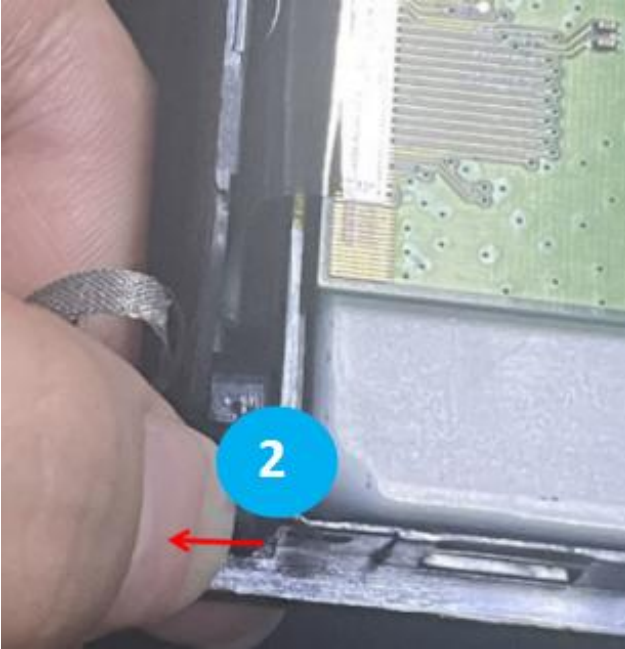
## Deco Strip Disassembly

---

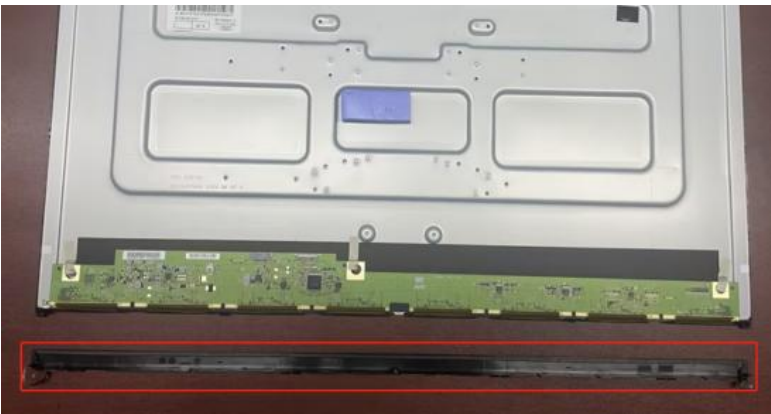
1. Tear off conductive tape **1** .



2. Locate the tabs **2** on the left and right sides of the trim strip and press outwards.



3. The trim strip can be removed once the trim strip clips have been loosened.



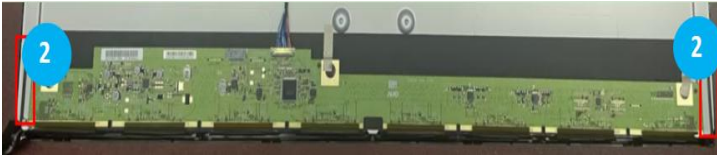
## Deco Strip Assembly

---

1. Place the deco strip **1** back to the LCD bezel with screw holes aligned and then snap it into place by pressing down around the edges.

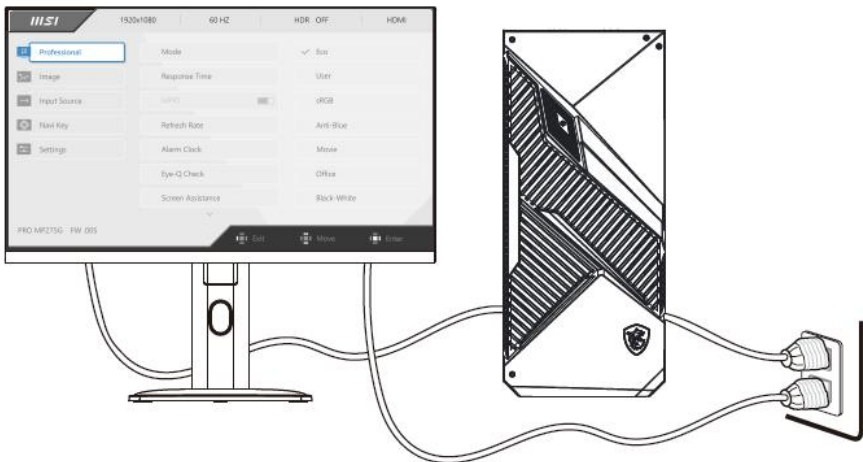


2. Attach the conductive tape **2** on the left and right sides of the trim strip in place.



# Powering Up After Maintenance

1. Connect the signal cable from the monitor to your PC. Connect the power cord to the monitor power jack and the electrical outlet. Turn on the monitor.
2. Depending on the monitor's signal ports, check the Type-c, HDMI, DP ports in sequence. Changing the display to Red, Green, Blue, White and Black screens to check whether an image is abnormal.
3. Press the Menu key and adjust the Brightness or other functions to inspect the screen for abnormalities.
4. Check the Audio and volume control for abnormalities when connecting to various signal ports.
5. Reset the monitor after inspection. Turn off the monitor and disconnect all cables.



# Troubleshooting

Users may refer to the following tips or visit [MSI Monitor Support](#) for quick and easy troubleshooting when encountering common problems with the product. It is always suggested that users contact the authorized MSI service center for advanced tech support if needed.

## The power LED is off.

- Press the monitor power button again.
- Check if the monitor power cable is properly connected.

## No image.

- Check if the computer graphics card is properly installed.
- Check if the computer and monitor are connected to electrical outlets and are turned on.
- Check if the monitor signal cable is properly connected.
- The computer may be in Standby mode. Press any key to activate the monitor.

## The screen image is not properly sized or centered.

- Refer to Preset Display Modes to set the computer to a setting suitable for the monitor to display.

## No Plug & Play.

- Check if the monitor power cable is properly connected.
- Check if the monitor signal cable is properly connected.
- Check if the computer and graphics card are Plug & Play compatible.

## The icons, font or screen are fuzzy, blurry or have color problems.

- Avoid using any video extension cables.
- Adjust brightness and contrast.
- Adjust RGB color or tune color temperature.
- Check if the monitor signal cable is properly connected.
- Check for bent pins on the signal cable connector.

## The monitor starts flickering or shows waves.

- Change the refresh rate to match the capabilities of your monitor.
- Update your graphics card drivers.
- Keep the monitor away from electrical devices that may cause electromagnetic interference (EMI).

# Recycling Guidelines

## The Stand

---

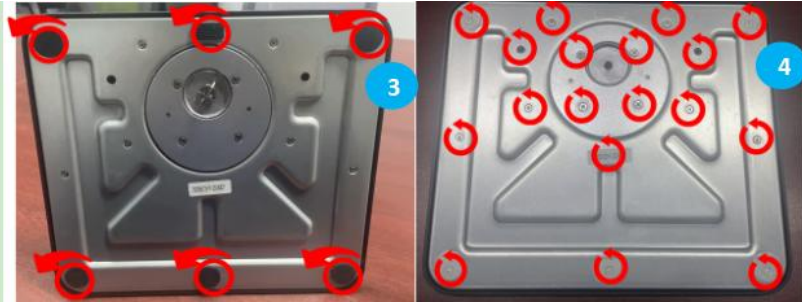
1. Follow Stand Disassembly to remove the adjustable stand from the monitor.
2. By disassembling quick release fasteners **1** of the stand base to separate the adjustable stand and the base **2**.



3. You'll see the stand and base separated.



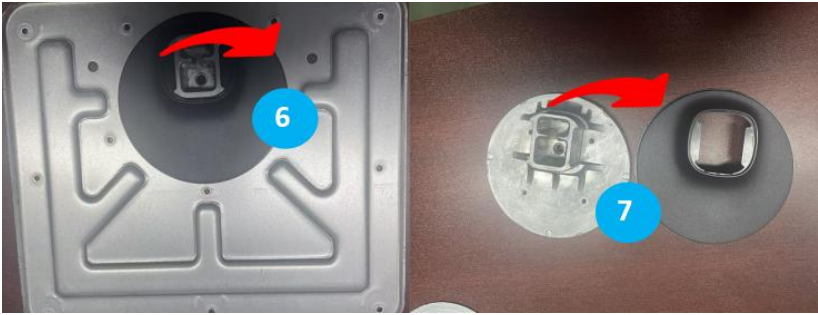
- Reverse the base. Tear off rubber pads **3** and remove screws **4** under with across head screwdriver to open the base.



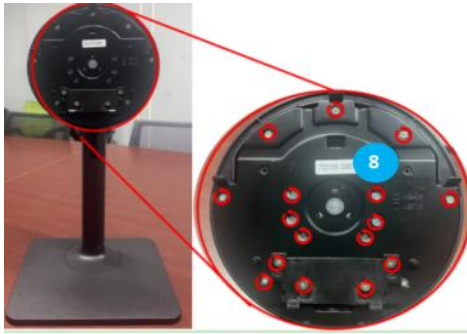
- Open and take out the steel base plate **5**, the plastic base plate can be recycled by qualified recyclers.



- 
6. Remove the bracket adapter **6** and then remove the iron member **7**.the plastic adapters can be recycled by qualified recyclers.



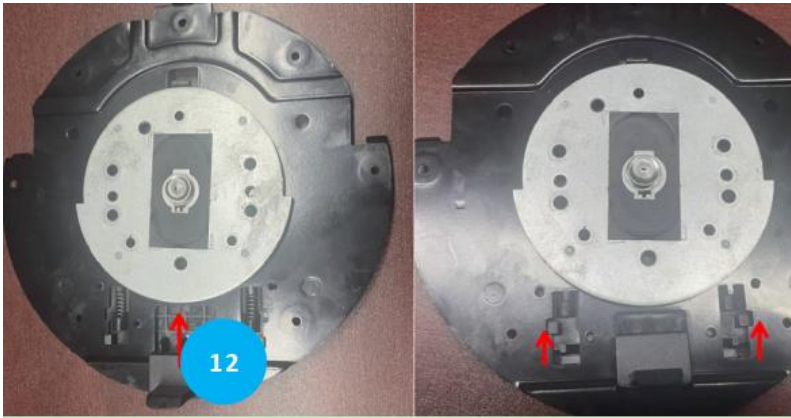
- 
7. Use a cross head screw driver to loose stand screws **8** , Remove bracket back cover **9** can be recycled by a qualified recycler.
-



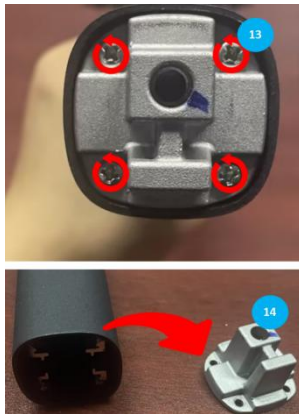
8. Separate VESA Iron Plate 10 from Bracket Neck 11.



9. Remove the sliding tab 12 by pressing it to the corresponding snap position.



10. Use a screwdriver to remove the screws **13** at the bottom of the bracket and remove the iron **14**.



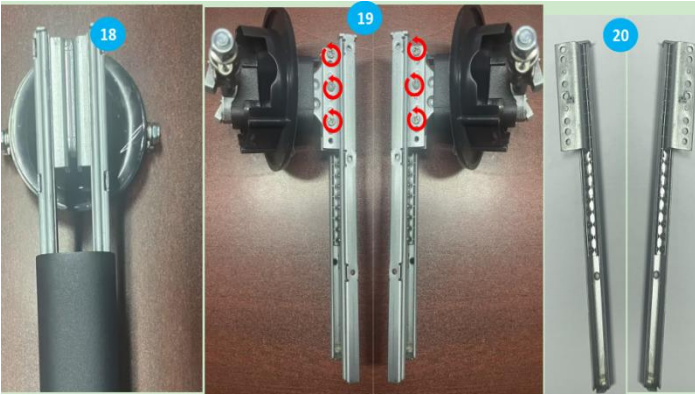
11. Use a tool to pry off the bracket cover **15**.



12. Use a screwdriver to remove the screws **16** at the bottom of the bracket and remove the iron **17**.



13. Remove assembly 18, then remove screws 19 and hardware 20.



14. Use the tool to pry open the plastic cover 21, screwdriver to remove the screws 22, can be removed from the plastic shell 23 and hardware 24 and 25.



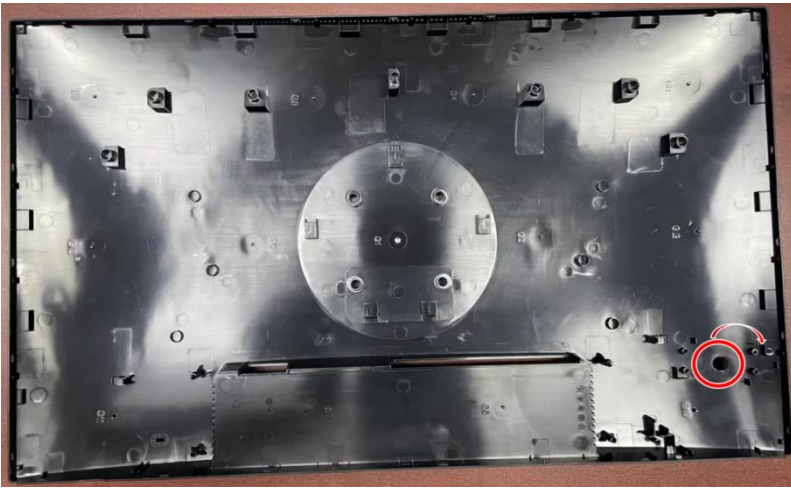
## Rear Cover

### Important

*Before recycling the separated plastic parts, please use a cross-head screwdriver or the diagonal pliers to remove all the screw bosses with copper sticks, if any.*

---

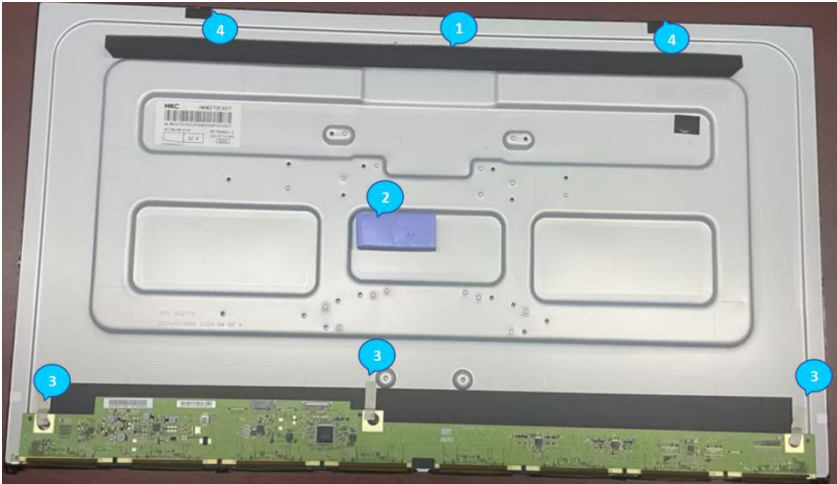
1. Follow Rear Cover Disassembly to remove the rear cover.
2. Remove navi key After disassembling all components, the rear cover can be recycled by qualified recyclers.



## Deco Strip & LCD Bezel

Remove the module by following the steps for removing the LCD panel and shield and for removing the trim strip, and place it on a horizontal workbench.

1. Remove the high-density foam ①, silicone pad ②, conductive cloth ③ and PET ④ from the backplane..



2. Carefully pry the T-CON ⑤ board upwards.



3. Use a pry tool to open the LCD bezel ⑥ and allow the rubber frame to separate from the back plate.



### Important

- This disassembly must be done in a clean room.
- You must wear an anti-static wrist strap when touching the mainboard and LCD panel.
- An ion fan must be available to remove static electricity.
- Please take this process gently to avoid LCD panel damage.

# Product End-of-Life Instructions



**Important**

## MSI Environmental Information

Information on MSI's Environmental initiatives, policies, programs and goals can be found at [Environmental Sustainability Policy](#).

## Purpose

This information is to provide the guidance to recyclers on the presence of materials and components at the product level, as required by the EU WEEE and amending Directive.

## Information on Component and Material Identification

The following substances, preparations, or components should be disposed of or recovered separately from other WEEE in compliance with Article 4 of EU Council Directive 75/442/EEC.

Identify materials for materials and components of the waste electrical and electronic equipment list.

\*1: The following item numbers correspond with those in [Product Components and Accessories](#).

Materials	Item*1	Location
Polychlorinated biphenyl (PCB) containing capacitors and all polychlorinated biphenyls and polychlorinated terphenyls (PCB/PCT) containing electrical equipment	–	Absent
Mercury containing components, such as switches or backlighting lamps	–	Absent
Batteries	–	Absent
Printed circuit boards of mobile phones generally, and of other devices if the surface of the printed circuit board is greater than 10 square centimeters	<a href="#">4</a>	Mainboard
	6	Navi Board
	<a href="#">5</a>	Power Board
Toner cartridges, liquid and paste, as well as color toner	–	Absent
Plastic containing abominated flame retardants	–	Absent

Materials	Item*1	Location
Asbestos waste and components which contain asbestos	-	Absent
Cathode ray tubes	-	Absent
Chlorofluorocarbons (CFC), Hydrochlorofluorocarbons (HCFC) or Hydrofluorocarbons (HFC), Hydrocarbons (HC)	-	Absent
Gas discharge lamps	-	Absent
Liquid crystal displays (together with their casing where appropriate) of a surface greater than 100 square centimeters and all those back-lighted with gas discharge lamps	<a href="#">3</a>	LCD Panel
External electric cables	<a href="#">9</a>	Power Cord
Components containing refractory ceramic fibers	-	Absent
Components containing radioactive substances, or materials that become radioactive	-	Absent
Electrolytic capacitors containing substances of concern (height > 25 mm, diameter > 25 mm or proportionately similar volume)	<a href="#">5</a>	Power Board
Beryllium and its compounds (including Beryllium Oxide)	-	Absent
Liquids	-	Absent

## Product Take-Back Service

Waste electrical equipment may contain hazardous substances and thus endanger human health & the environment. Proper disposal is therefore required. MSI provides free recycling of EPEAT-registered products to ensure that the product reaches the end of its useful life and that it is recycled responsibly.

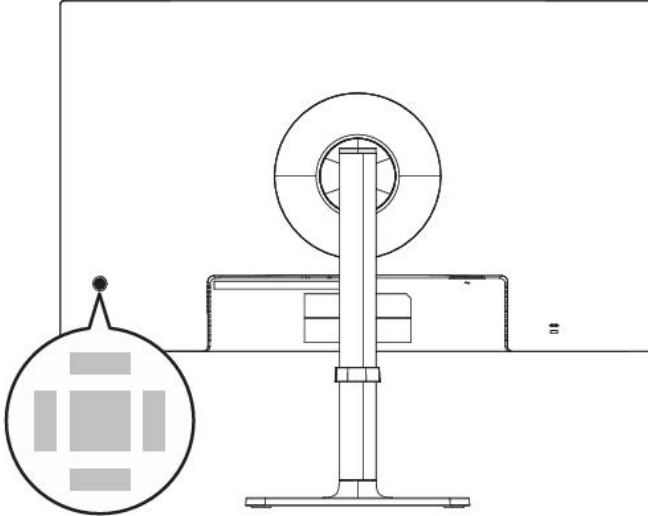
To properly recycle your equipment through this service, please follow the steps:

1. Please delete your personal data from your waste equipment.
2. [CLICK HERE](#) to learn how to recycle your end-of-life product.
3. Find the MSI recycling location nearby on the website.
4. Contact the designated recycling location by phone or email to schedule your pickup. The customers are responsible for any shipping and delivery charges.

# OSD Setup

# Navi Key

The monitor comes with a Navi Key, a multi-directional control that helps navigate the On-Screen Display (OSD) menu.



## Up/ Down/ Left/ Right:

- selecting function menus and items
- adjusting function values
- entering into/exiting from function menus

## Press (OK):

- launching the On-Screen Display (OSD)
- entering submenus
- confirming a selection or setting

## Hot Key

- Users may enter into preset function menus by moving the Navi Key up, down, left or right when the OSD menu is inactive.
- Users may customize their own Hot Keys to enter into different function menus.

## SD Menus




### Important

The following settings will be grayed out when HDR signals are received:

- . Low Blue Light
- . HPCR
- . Brightness
- . Contrast
- . Color Temperature
- . sRGB
- . PIP/PBP

## Professional

1st Level Menu	2nd/3rd Level Menu	Description						
Mode	Eco	<ul style="list-style-type: none"> <li>. Use Up or Down Button to select and preview mode effects.</li> <li>. Press the E Button to confirm and apply your mode type.</li> <li>. Activating sRGB will affect:</li> </ul>						
	User							
	sRGB							
	Anti-Blue							
	Movie							
	Office							
	Black-White							
		<table border="1"> <thead> <tr> <th>Affected Function</th> <th>Function Status</th> </tr> </thead> <tbody> <tr> <td>» Color Temperature</td> <td rowspan="3">Unable to select</td> </tr> <tr> <td>» Contrast</td> </tr> <tr> <td>» Low Blue Light</td> </tr> </tbody> </table>	Affected Function	Function Status	» Color Temperature	Unable to select	» Contrast	» Low Blue Light
Affected Function	Function Status							
» Color Temperature	Unable to select							
» Contrast								
» Low Blue Light								

1st Level Menu	2nd/3rd Level Menu		Description
Refresh Rate	Location	Left Top	<ul style="list-style-type: none"> <li>Location is adjustable in OSD Menu. Press the E Button to confirm and apply your Refresh Rate Location.</li> <li>This monitor follows and works at the Operating System's preset Screen Refresh Rate.</li> </ul>
		Right Top	
		Left Bottom	
		Right Bottom	
	OFF		
ON			
Alarm Clock	Location	Left Top	<ul style="list-style-type: none"> <li>After setting the time, press the E Button to activate the timer.</li> <li>Users have to manually restore their preset Alarm Clock after any AC power loss and reconnection.</li> </ul>
		Right Top	
		Left Bottom	
		Right Bottom	
	OFF		
	15:00	00:01 ~ 99:59	
	30:00		
45:00			
60:00			
Eye-Q Check	OFF		<ul style="list-style-type: none"> <li>Select OFF to disable Eye-Q Check.</li> </ul>
	Amsler Grid		<ul style="list-style-type: none"> <li>Select Amsler Grid to check your central vision field.</li> </ul>
	Astigmatism		<ul style="list-style-type: none"> <li>Select Astigmatism to check your blurred vision.</li> </ul>
	Posture Correction		<ul style="list-style-type: none"> <li>Select Posture Correction to improve your posture when sitting.</li> </ul>
Screen Assistance	None		<ul style="list-style-type: none"> <li>Users can adjust Screen Assistance in any mode.</li> </ul>
			
KVM	Auto		<ul style="list-style-type: none"> <li>Auto allows the monitor to automatically switch between USB input sources, such as keyboards, mice or other USB devices.</li> </ul>
	Upstream		
	Type C		<ul style="list-style-type: none"> <li>Users can also designate Upstream port or USB Type-C as the only USB signal source.</li> </ul>

1st Level Menu	2nd/3rd Level Menu	Description						
Screen Size	Auto	<ul style="list-style-type: none"> <li>Users can adjust Screen Size in any mode, any resolution and any screen refresh rate.</li> <li>Activating Screen Size 1:1 will affect:</li> </ul> <table border="1"> <thead> <tr> <th>Affected Function</th> <th>Function Status</th> </tr> </thead> <tbody> <tr> <td>» Adaptive-Sync » PIP/PBP</td> <td>Set to OFF</td> </tr> </tbody> </table>	Affected Function	Function Status	» Adaptive-Sync » PIP/PBP	Set to OFF		
	Affected Function		Function Status					
	» Adaptive-Sync » PIP/PBP		Set to OFF					
	4:3							
	16:9							
21:9								
1:1								
Adaptive-Sync	OFF	<ul style="list-style-type: none"> <li>Adaptive-Sync prevents screen tearing.</li> <li>When Adaptive-Sync is set to ON, it is mandatory to enable HDMI™ VRR.</li> <li>Activating Adaptive-Sync will affect:</li> </ul> <table border="1"> <thead> <tr> <th>Affected Function</th> <th>Function Status</th> </tr> </thead> <tbody> <tr> <td>» PIP/PBP</td> <td>Set to OFF</td> </tr> <tr> <td>» Screen Size 1:1</td> <td>Set to Auto</td> </tr> </tbody> </table>	Affected Function	Function Status	» PIP/PBP	Set to OFF	» Screen Size 1:1	Set to Auto
	Affected Function		Function Status					
» PIP/PBP	Set to OFF							
» Screen Size 1:1	Set to Auto							
	ON							

## Image

1st Level Menu	2nd/3rd Level Menu	Description				
Brightness	0-100	<ul style="list-style-type: none"> <li>Properly adjust Brightness according to the surrounding lighting.</li> </ul>				
Contrast	0-100	<ul style="list-style-type: none"> <li>Properly adjust Contrast to relax your eyes.</li> </ul>				
Sharpness	0-5	<ul style="list-style-type: none"> <li>Sharpness improves clarity and details of images.</li> </ul>				
Image Enhancement	OFF	<ul style="list-style-type: none"> <li>Image Enhancement enhances image edges to improve their acutance.</li> </ul>				
	Weak					
	Medium					
	Strong					
	Strongest					
Low Blue Light	OFF	<ul style="list-style-type: none"> <li>Low Blue Light protects your eyes against blue light. When enabled, Low Blue Light adjusts the screen color temperature to a more yellow glow.</li> </ul>				
	ON					
HDCR	OFF	<ul style="list-style-type: none"> <li>HDCR enhances image quality by increasing the contrast of images.</li> <li>Activating HDCR will affect:</li> </ul> <table border="1"> <thead> <tr> <th>Affected Function</th> <th>Function Status</th> </tr> </thead> <tbody> <tr> <td>» Brightness</td> <td>Unable to select</td> </tr> </tbody> </table>	Affected Function	Function Status	» Brightness	Unable to select
	Affected Function		Function Status			
» Brightness	Unable to select					
	ON					

1st Level Menu	2nd/3rd Level Menu		Description
Color Temperature	Cool		<ul style="list-style-type: none"> <li>Use Up or Down Button to select and preview mode effects.</li> </ul>
	Normal		
	Warm		<ul style="list-style-type: none"> <li>Press the E Button to confirm and apply your mode type.</li> </ul>
	Customization	R (0-100)	<ul style="list-style-type: none"> <li>Users can adjust Color Temperature in Customization mode.</li> </ul>
		G (0-100)	
B (0-100)			

## Input Source

1st Level Menu	2nd Level Menu	Description
HDMI™1		<ul style="list-style-type: none"> <li>Users can adjust Input Source in any mode.</li> </ul>
HDMI™2		
DP		
Type C		
Auto Scan	OFF	<ul style="list-style-type: none"> <li>Users can use the Navi Key to select Input Source at below status:                             <ul style="list-style-type: none"> <li>While "Auto Scan" is set to "OFF" with the monitor at power saving mode;</li> <li>While "No Signal" message box is shown on the monitor.</li> </ul> </li> </ul>
	ON	

# PIP/PBP

1st Level Menu	2nd/3rd Level Menu		Description
OFF			<ul style="list-style-type: none"> <li>PIP (Picture in Picture) allows users to simultaneously display multiple video sources on one screen. One program is displayed on the full screen at the same time as one or more other programs are displayed in inset windows.</li> <li>PBP (Picture by Picture) is a similar feature that displays two input sources side-by-side on the screen.</li> <li>Display Switch allows users to switch between primary and secondary input sources.</li> <li>If there is only one signal input, the Display Switch and Audio Switch will be grayed out.</li> </ul>
PIP	Source	HDMI™1	
		HDMI™2	
		DP	
		Type C	
	PIP Size	Small	
		Medium	
		Large	
	Location	Left Top	
		Right Top	
		Left Bottom	
Right Bottom			
Display Switch			
Audio Switch			
PBP	Source 1	HDMI™1	
		HDMI™2	
		DP	
		Type C	
	Source 2	HDMI™1	
		HDMI™2	
		DP	
		Type C	
	Display Switch		
	Audio Switch		

Affected Function	Function Status
» Response Time	Unable to select
» Adaptive-Sync	Set to OFF
» HDMI™ CEC	Set to OFF & unable to select
» PIP: Screen Size 1:1 » PBP: Screen Size	Set to Auto & unable to select

## Navi Key

1st Level Menu	2nd Level Menu	Description
Up	OFF	<ul style="list-style-type: none"> <li>All Navi Key items can be adjusted via OSD Menus.</li> </ul>
Down	Brightness	
Left	Mode	
Right	Alarm Clock	
	Input Source	
	PIP/PBP	
	Refresh Rate	
	Info. On Screen	
	Audio Volume	
	KVM	

## Settings

1st Level Menu	2nd/3rd Level Menu	Description
Language	繁體中文	<ul style="list-style-type: none"> <li>Users have to press the E Button to confirm and apply the Language setting.</li> <li>Language is an independent setting. Users' own language setting will override the factory. When users set Reset to Yes, Language will not be changed.</li> </ul>
	English	
	Français	
	Deutsch	
	Italiano	
	Español	
	한국어	
	日本語	
	Русский	
	Português	
	简体中文	
	Bahasa Indonesia	
	Türkçe	
	(More languages coming soon)	
Transparency	0~5	<ul style="list-style-type: none"> <li>Users can adjust Transparency in any mode.</li> </ul>
OSD Time Out	5~30s	<ul style="list-style-type: none"> <li>Users can adjust OSD Time Out in any mode.</li> </ul>
Power Button	OFF	<ul style="list-style-type: none"> <li>When set to OFF, users can press the power button to turnoff the monitor.</li> </ul>
	Standby	<ul style="list-style-type: none"> <li>When set to Standby, users can press the power button to turnoff the panel and backlight.</li> </ul>

1st Level Menu	2nd/3rd Level Menu	Description
----------------	--------------------	-------------

HDMI™ CEC	OFF	<ul style="list-style-type: none"> <li>. HDMI™ CEC (Consumer Electronics Control) supports Sony PlayStation®, Nintendo® Switch™, Xbox Series X S consoles and various audio-visual devices that are CEC-capable.</li> <li>. If HDMI™ CEC is set to ON:                             <ul style="list-style-type: none"> <li>• The monitor will automatically power on when the CEC device is turned on.</li> <li>• The CEC device will enter power saving mode when the monitor is turned off.</li> <li>• When Sony PlayStation®, Nintendo® Switch™, or Xbox Series X S console is connected, Mode will be automatically set to default modes and can be adjusted to users' preferred modes later.</li> </ul> </li> </ul>
	ON	
Info. On Screen	OFF	<ul style="list-style-type: none"> <li>. The information of the monitor status will be shown on the right side of the screen.</li> </ul>
	ON	
Type C PD Charge	OFF	<ul style="list-style-type: none"> <li>. Type C PD Charge enables users to charge their devices through a USB Type-C connector, which can deliver up to 98W (20V/4.9A).</li> </ul>
	ON	
USBC Hub Signal	2.0	<ul style="list-style-type: none"> <li>. When the "Type C" input source is selected, users can switch the USB signal between 2.0 (480 Mbps) and 3.0 (5 Gbps).</li> </ul>
	3.0	
Reset	YES	<ul style="list-style-type: none"> <li>. Users can Reset and restore settings to original OSD Default in any mode.</li> </ul>
	NO	