



# **Pro Series**

## **Personal Computer**

PRO DP10 A14MG  
(MS-B210)

Service Guide

# Contents

Copyright and Trademarks Notice.....	5
Revision.....	5
How to Use this Service Guide.....	5
Safety Instructions.....	6
Power.....	6
Battery.....	6
Environment.....	6
Conditional Warranty Service.....	7
Upgrade and Service.....	7
Data Sanitization.....	7
Publicly Available Service Information.....	8
<b>Disassembly &amp; Assembly.....</b>	<b>9</b>
Product Components and Accessories.....	10
Product Upgradeability and Repairability.....	12
Recommended Tools.....	13
Screw List.....	13
Preparation for Disassembly.....	14
Top Bracket.....	15
Top Bracket Disassembly.....	15
Top Bracket Assembly.....	15
Rear I/O Bracket.....	16
Rear I/O Bracket Disassembly.....	16
Rear I/O Bracket Assembly.....	16
Maintain Door.....	17
Maintain Door Disassembly.....	17
Maintain Door Assembly.....	17
Solid-State Drive.....	18
Solid-State Drive Disassembly.....	18
Solid-State Drive Assembly.....	18

Memory .....	19
Memory Disassembly.....	19
Memory Assembly .....	19
Daughter Board.....	20
Daughter Board Disassembly.....	20
Daughter Board Assembly.....	20
Wireless Card .....	21
Wireless Card Disassembly.....	21
Wireless Card Assembly.....	21
Thermal Module.....	22
Thermal Module Disassembly.....	22
Thermal Module Assembly.....	22
Mainboard.....	23
Mainboard Disassembly .....	23
Mainboard Assembly .....	23
CPU .....	24
CPU Disassembly .....	24
CPU Assembly .....	24
Antenna Module.....	25
Antenna Module Disassembly.....	25
Antenna Module Assembly.....	25
Wi-Fi Antenna Connector .....	26
Wi-Fi Antenna Connector Disassembly.....	26
Wi-Fi Antenna Connector Assembly.....	26
Coin Battery .....	27
Coin Battery Disassembly.....	27
Coin Battery Assembly .....	27
TPM Module.....	28
TPM Module Disassembly.....	28
TPM Module Assembly.....	28
Intrusion Cable .....	29
Intrusion Cable Disassembly.....	29
Intrusion Cable Assembly.....	29

Wired Mouse (Optional) .....	30
Wired Mouse Disassembly.....	30
Wired Mouse Assembly.....	30
Wired Keyboard (Optional) .....	31
Wired Keyboard Disassembly.....	31
Wired Keyboard Assembly.....	32
Powering Up After Maintenance.....	33
Troubleshooting.....	34
Recycling Guidelines.....	36
External Power Supply.....	36
Wired Mouse (Optional).....	37
Wired Keyboard (Optional).....	37
Product End-of-Life Instructions.....	38
Purpose .....	38
Information on Component and Material Identification .....	38
Product Take-Back Service .....	40
<b>Using MSI Center .....</b>	<b>41</b>
Login and Register .....	42
Create an Account.....	42
Product Registration .....	43
Feature Sets .....	44
Hardware Monitoring .....	45
Features .....	46
System Diagnosis.....	47
Support .....	48
Live Update .....	48
System Info.....	49
Service.....	50

# Copyright and Trademarks Notice

Copyright © 2023 Micro-Star Int'l Co., Ltd. All rights reserved.

The MSI logo used is a registered trademark of Micro-Star Int'l Co., Ltd. Third-party trademarks and names are the properties of their respective owners. No warranty as to accuracy or completeness is expressed or implied. MSI reserves the right to make changes to this document without prior notice.

## Revision

V1.0, 2025/10

## How to Use this Service Guide

This Service Guide provides in-depth illustration of disassembling/assembling the product. Since the topics in this guide may be related, it is recommended that you read it from cover to cover first. After that, you may go directly to any specific topic that most meets your immediate needs.

# Safety Instructions

Adhere to safety precautions when handling the product to prevent harm or damage to individuals or the product's functionality.

## Power

- If the power cord comes with a 3-pin plug, do not disable the protective earth pin from the plug. The product must be connected to an earthed mains socket-outlet.
- Disconnect all power sources and place the product on a steady surface before disassembly/assembly.
- When unplugging the power cord, always hold the connector part of the cord. Never pull the cord directly.
- Place the power cord in a way that people are unlikely to step on it. Do not place anything on top of the power cord.
- If this product comes with an adapter, use only the MSI provided AC adapter approved for use with this product.

## Battery

Please take special precautions if this product comes with a battery.

- Danger of explosion if battery is incorrectly replaced. Replace only with the same or equivalent type recommended by the manufacturer.
- Avoid disposal of a battery into fire or a hot oven, or mechanically crushing or cutting of a battery, which can result in an explosion.
- Avoid leaving a battery in an extremely high temperature or extremely low air pressure environment that can result in an explosion or the leakage of flammable liquid or gas.
- Do not ingest battery. If the coin/button cell battery is swallowed, it can cause severe internal burns and can lead to death. Keep new and used batteries away from children.

## Environment

- Do not place the product in environments subject to mist, smoke, vibration, excessive dust, salty or greasy air, or other corrosive gases and fumes.
- To avoid electrostatic discharge, use an anti-static wrist strap before handling components. Always handle electrostatic-sensitive components, parts, and assemblies only at static-free work areas.
- Handle components with care. Do not touch the pins or contacts on a component.
- Place components on a grounded anti-static pad or on the bed that came with the components whenever the components are separated from the product.
- Do not perform any maintenance with wet hands.
- Prevent foreign substances, such as water, other liquids or chemicals, from entering the product while performing disassembly/assembly.
- After assembly, ensure that all screws are replaced and no stray screws remain inside the product.

# Conditional Warranty Service

MSI provides a conditional warranty service for selected models. Please visit [MSI Member Center](#) for further information.

# Upgrade and Service

Available hardware features may only be offered as part of an upgrade, repair, or replacement service offered by MSI or an authorized service provider.

MSI offers customers replacement parts, product repair and services for 3 years from the date of sale for all EPEAT-registered products.

Damages caused by servicing of products not authorized by MSI or the use of modified or non-MSI authorized parts or components are not covered by MSI Limited Warranty Agreement.

Visit [MSI Service Location](#) to obtain these services offered by MSI.

Go to [MSI Web Ticket](#) to receive further assistance if needed.

# Data Sanitization

MSI will not assume any responsibility or confidentiality obligation for the security of any data stored on the equipment submitted for recycling. Users are advised to back up and remove all data from the computers.

Before recycling, we recommend that users follow instructions on [Data Sanitization](#) to permanently and irreversibly remove all personal files, applications and settings from the computers.

# Publicly Available Service Information

Service Information	Section
Disassembly instructions including identifying the required tools.	<a href="#"><u>Product Components and Accessories</u></a> <a href="#"><u>Recommended Tools</u></a>
Exploded diagram of parts.	<a href="#"><u>Product Components and Accessories</u></a>
List of spare parts including manufacturer-approved spare parts and how to obtain them.	<a href="#"><u>Product Upgradeability and Repairability</u></a>
Maintenance procedures or guidance on where to obtain the procedures.	<a href="#"><u>System Diagnosis</u></a>
Troubleshooting instructions, software diagnostic tools, troubleshooting videos or other troubleshooting guidance.	<a href="#"><u>Troubleshooting</u></a> <a href="#"><u>Service &gt; Troubleshooting</u></a>
Instructions on how to obtain software updates (not applicable to display products).	<a href="#"><u>Support</u></a>
Instructions on how the user can remove personal data. If the instructions require destruction of the storage, instructions to replace the storage shall be provided (not applicable to display products).	<a href="#"><u>Data Sanitization</u></a>

## It is acceptable for service instructions to exclude information that, as determined by the manufacturer:

a) May expose the user to risk of injury, or	N/A
b) Breaches intellectual property rights, or	N/A
c) Compromises user privacy or security, or	N/A
d) Involves the disassembly of a battery pack or power supply	N/A
If claiming any of the four exclusions above the manufacturer shall demonstrate how the product is restored to normal operating condition after being repaired. Repair may include replacement of the component(s) associated with the exclusion.	N/A

# **Disassembly & Assembly**

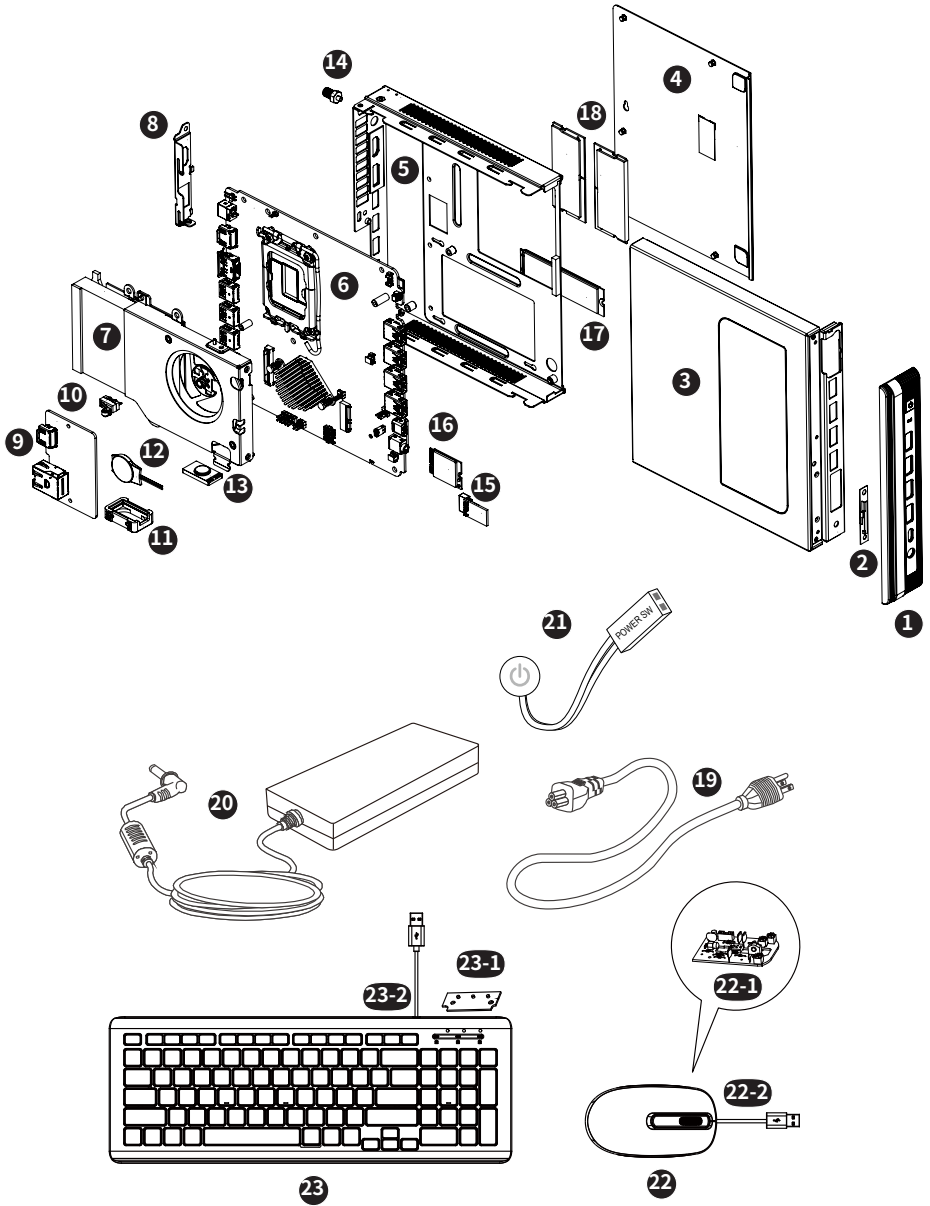
# Product Components and Accessories



## **Important**

MSI provides the below list of components for the system configuration purchased and within 2 years after discontinuation of the product to increase the operational life of that product. Further services can be obtained by contacting [MSI Online Customer Service](#).

1. **Front Bezel**
2. [Antenna Module](#)
3. [Top Bracket](#)
4. [Maintain Door](#)
5. **Bottom Bracket**
6. [Mainboard](#)
7. [Thermal Module](#)
8. [Rear I/O Bracket](#)
9. [Daughter Board](#)
10. [Intrusion Cable](#)
11. **Speaker Rubber**
12. [Coin Battery](#)
13. **Speaker**
14. [Wi-Fi Antenna Connector](#)
15. [TPM Module](#)
16. [Wireless Card](#)
17. [Solid-State Drive](#)
18. [Memory](#)
19. **Power Cord**
20. **External Power Supply**
21. **Power Button Switch Cable (Optional)**
22. [Wired Mouse \(Optional\)](#)
  - 22-1 [Wired Mouse PCB \(Optional\)](#)
  - 22-2 [Wired Mouse USB Cable \(Optional\)](#)
23. [Wired Keyboard \(Optional\)](#)
  - 23-1 [Wired Keyboard PCB \(Optional\)](#)
  - 23-2 [Wired Keyboard USB Cable \(Optional\)](#)



# Product Upgradeability and Repairability

Hardware features for upgradeable, repairable or replaceable using only commonly available tools and listing of replaceable spare parts by products can be obtained by contacting [MSI Online Customer Service](#).

Please refer to the following [hyperlinks](#) for specific details of the replacement or upgrade methods.

Hardware feature items	Upgradeable	Repairable	Replaceable	Soldering
The main processor(s) or system on a chip (SOC)	Yes	No	Yes	No
Main memory capacity of the system	No	No	Yes	No
<a href="#">Mass storage capacity of the system</a>	Yes	No	Yes	No
<a href="#">Wireless networking capability</a>	No	No	Yes	No
Graphics capability (integrated or discrete)	N/A	No	N/A	N/A
Display panel or display assembly	N/A	No	N/A	N/A
Integrated mechanical keyboards	N/A	No	N/A	N/A
<a href="#">All batteries</a>	No	No	Yes	No
<a href="#">All external and internal power supplies</a>	No	No	Yes	No
<a href="#">All fan assemblies</a>	No	No	Yes	No
<b>AND At least two of the following (or one, if all remaining are absent from product):</b>	<b>Upgradeable</b>	<b>Repairable</b>	<b>Replaceable</b>	<b>Soldering</b>
Speakers	No	No	Yes	No
Camera	N/A	No	N/A	N/A
Touchpad	N/A	No	N/A	N/A
I/O connectors and external power connection	No	No	No	Yes
Readers (eg. magnetic stripe, Dallas key, fingerprint, Smart card)	N/A	No	N/A	N/A

## Recommended Tools

The following tools may be needed while performing the disassembly and assembly procedures.

- Cross-head screwdriver
- Parallel screwdriver
- Hex Socket
- Tweezers
- Pry tool
- Diagonal pliers
- Anti-static gloves
- Anti-static wrist strap (optional)
- Anti-static mat with grounding wire (optional)

## Screw List

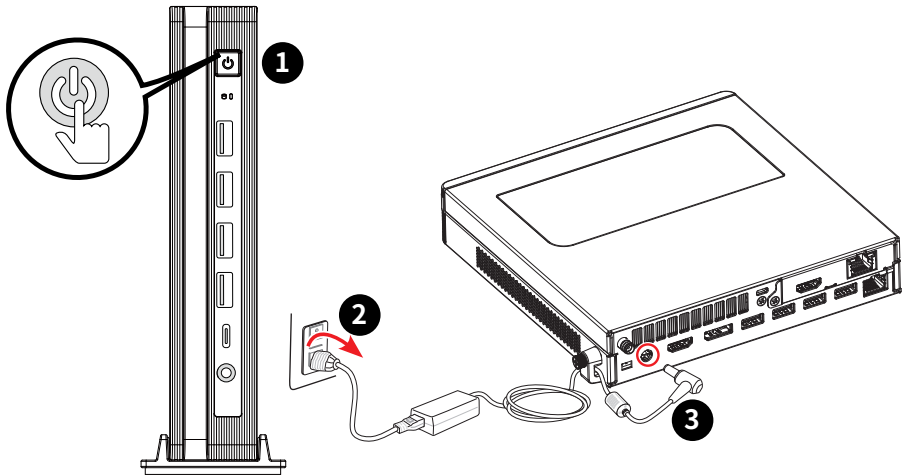
Please refer to the screw list below while proceeding the disassembly and assembly of the computer.

Note: This screw list is for reference only and may vary from models to models. It is highly recommended that users contact the authorized service center for further assistance.

Component	Screw Type	Quantity
Front Bezel	Flat Head B2*L6	3
Antenna Module	Flat Head M3*L3	2
Top Bracket	Countersunk Head M3*L4	1
Mainboard	Flat Head M2.5*L5.5	3
	Hex Standoff Screw H9-M3*L4	1
Thermal Module	Flat Head M2.5*L5.5	1
Rear I/O Bracket	Countersunk Head M3*L4	2
Daughter Board	Flat Head M2.5*L5.5	2
Instrusion Cable	Flat Head M2*L8	1
Wireless Card	Flat Head M2*L4.5	1
SSD	Flat Head M2*L4.5	1

# Preparation for Disassembly

1. Power off the PC.
2. Disconnect the power cord from the electrical outlet.
3. Disconnect the power cord from the PC.



## Important

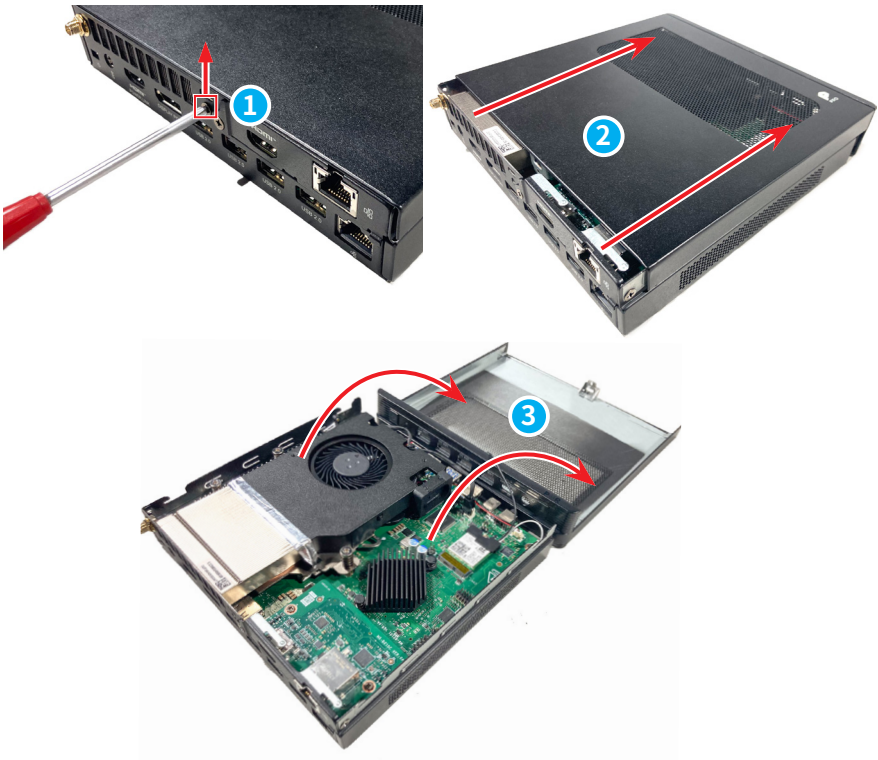
- *Disconnect all power sources and place the PC on a steady surface before disassembly/assembly.*
- *When unplugging the power cord, always hold the connector part of the cord. Never pull the cord directly.*
- *Do not place the PC in environments subject to mist, smoke, vibration, excessive dust, salty or greasy air, or other corrosive gases and fumes.*
- *To avoid electrostatic discharge, use anti-static gloves or an anti-static wrist strap before handling electrostatic-sensitive components.*
- *Do not perform any maintenance with wet hands.*
- *After assembly, ensure that all screws are replaced and no stray screws remain inside the PC.*

# Top Bracket

## Top Bracket Disassembly

---

1. Place the computer on a steady surface. Loosen and remove the screw **1** with a cross-head screwdriver.
2. Slide the top bracket **2** outward to uncover the computer components.
3. Flip the top bracket **3** over to uncover the computer components.



---

## Top Bracket Assembly

To assemble the Top Bracket, follow the disassembly steps in reverse.

---

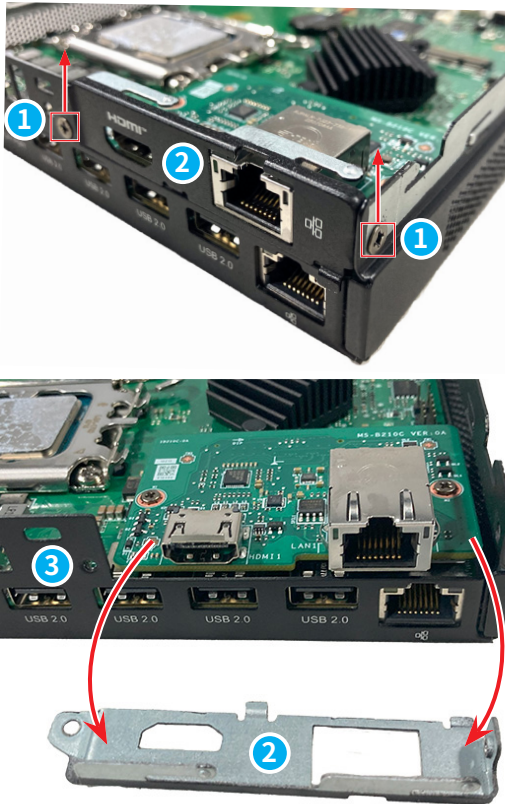
# Rear I/O Bracket

## Rear I/O Bracket Disassembly

1. Use a cross-head screwdriver to loosen and remove the screws ① and separate the rear I/O bracket ② from the bottom bracket ③.

 **Important**

- The rear I/O bracket may differ from the picture depending on the model (SKU).



## Rear I/O Bracket Assembly

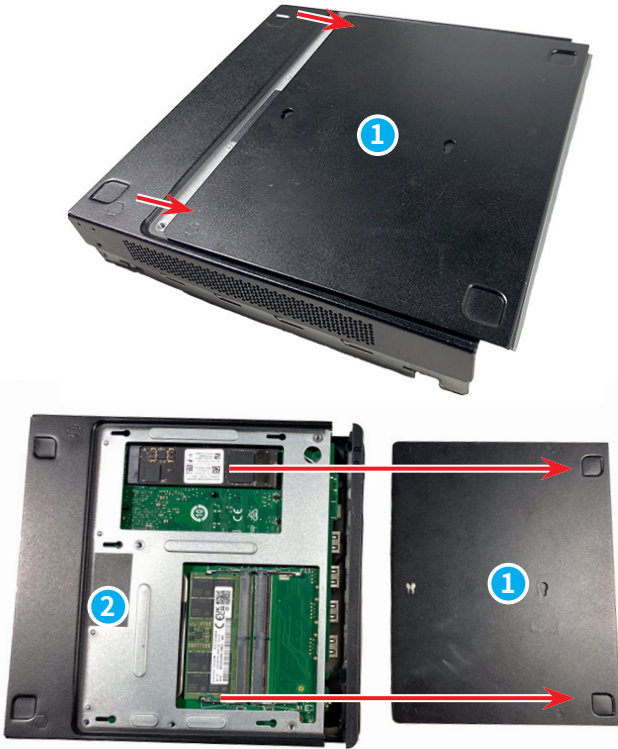
To assemble the Rear I/O Bracket follow the disassembly steps in reverse.

# Maintain Door

## Maintain Door Disassembly

---

1. Slide the maintain door **1** outward to lift it and uncover the bottom bracket **2**.



---

## Maintain Door Assembly

---

To assemble the Maintain Door, follow the disassembly steps in reverse.

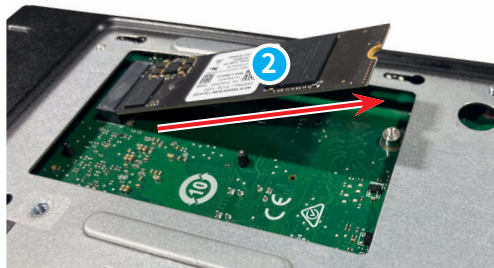
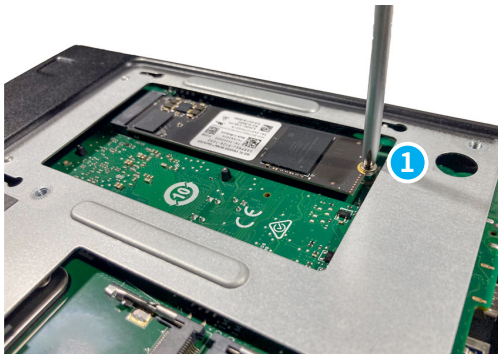
---

# Solid-State Drive

## Solid-State Drive Disassembly

---

1. Remove the screws **1** that secure the solid-state drive with a cross-head screwdriver.
2. Slide and remove the solid-state drive **2** from the M.2 slot by hand.



---

## Solid-State Drive Assembly

To assemble the Solid-State Drive, follow the disassembly steps in reverse.

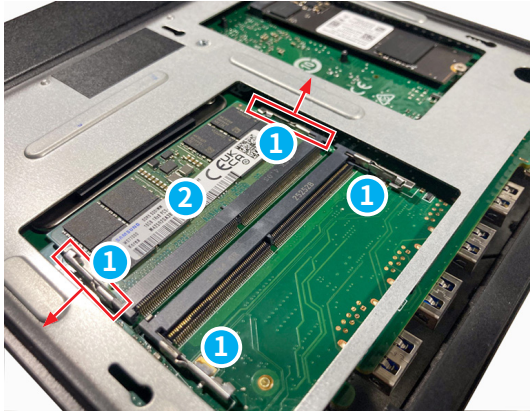
---

# Memory

## Memory Disassembly

---

1. Push the locking clips **1** on both sides of the memory slot outward.
2. Slide and remove the memory **2** from the memory slot by hand.



---

## Memory Assembly

To assemble the Memory, follow the disassembly steps in reverse.

---

# Daughter Board

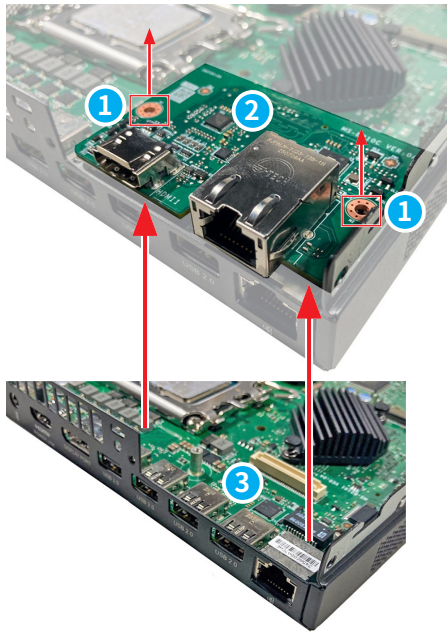
## Daughter Board Disassembly

---

1. Using a cross-head screwdriver to loosen and remove the screws ① on the daughter board ② using a cross-head screwdriver.
2. Separate the daughter board ② from the mainboard ③.

 **Important**

- The daughter board may differ from the picture depending on the model (SKU).



---

## Daughter Board Assembly

---

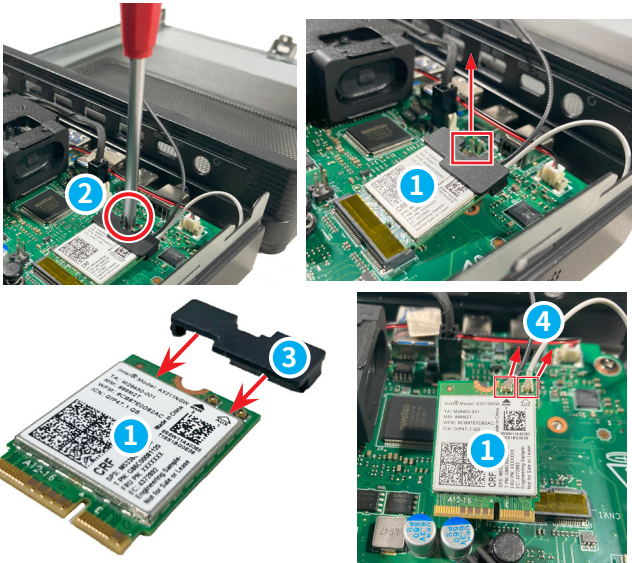
To assemble the daughter board, follow the disassembly steps in reverse.

---

# Wireless Card

## Wireless Card Disassembly

1. Follow [Top Bracket Disassembly](#) to remove the top bracket and uncover the wireless card **1** underneath.
2. Locate and remove the screw **2** that secures the wireless card with a cross-head screwdriver.
3. Remove the wireless card **1** from the card slot.
4. Locate and remove the wireless card clip **3**.
5. Disconnect the antenna cables **4**.



## Wireless Card Assembly

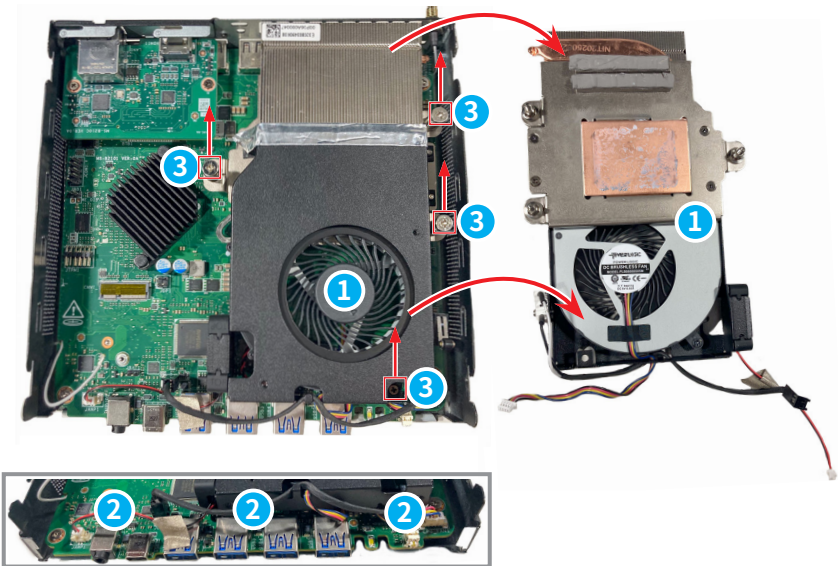
To assemble the Wireless Card, follow the disassembly steps in reverse.

# Thermal Module

## Thermal Module Disassembly

---

1. Follow [Top Bracket Disassembly](#) to remove the top bracket and uncover the thermal module **1** underneath.
2. Disconnect the fan cables **2** from the mainboard.
3. Remove the screws **3** that secure the fan and the thermal module **1** with a cross-head screwdriver.
4. Lift the thermal module **1** and its cables **2** off the mainboard.



---

## Thermal Module Assembly

---

To assemble the Thermal Module, follow the disassembly steps in reverse.

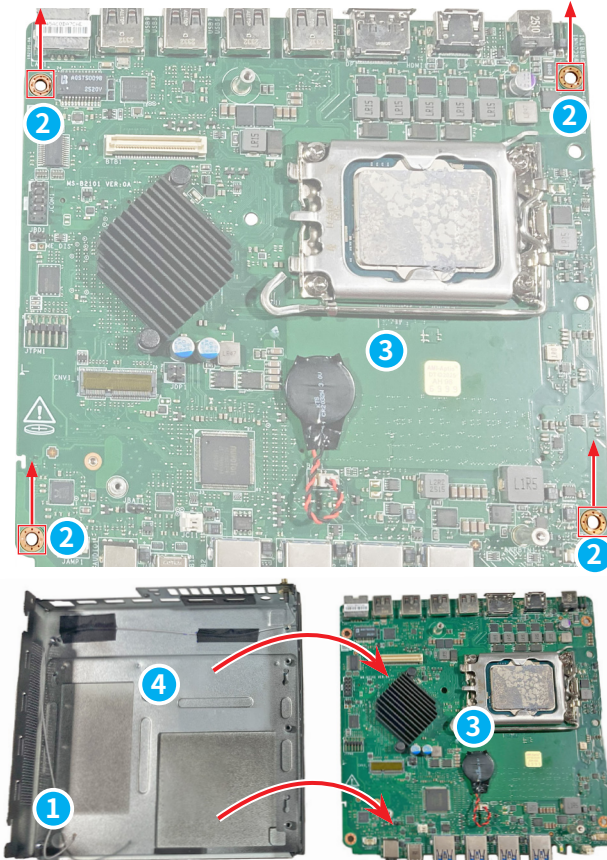
---

# Mainboard

## Mainboard Disassembly

---

1. Disconnect the Wi-Fi Antenna Connector cable **1**.
2. Using a cross-head screwdriver to loosen and remove the screws **2** on the mainboard **3**.
3. Separate the mainboard **3** from the bottom bracket **4**.



## Mainboard Assembly

---

To assemble the Mainboard, follow the disassembly steps in reverse.

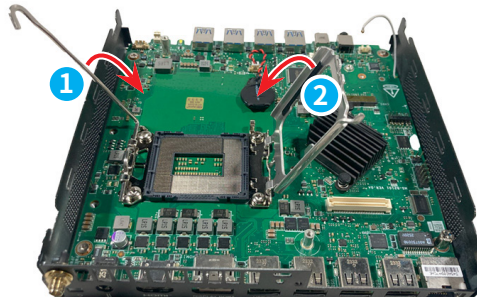
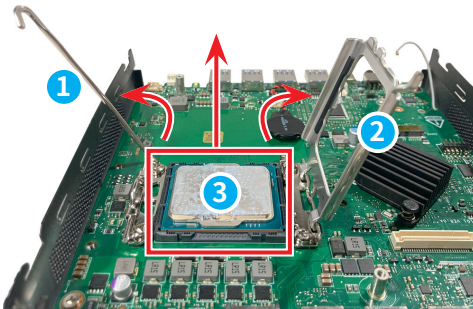
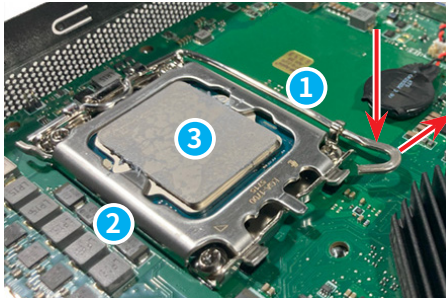
---

# CPU

## CPU Disassembly

---

1. Follow [Thermal Module Disassembly](#) to remove the thermal module and uncover the CPU underneath.
2. Locate and push the load lever **1** down to unclip the CPU socket. Lift the load lever **1** up to the fully open position and the load plate **2** will automatically lift up.
3. Remove the CPU **3** straight up from the CPU socket without tilting the CPU.
4. Close the load plate **2** and then close the load lever **1**.



---

## CPU Assembly

To assemble the CPU, follow the disassembly steps in reverse.

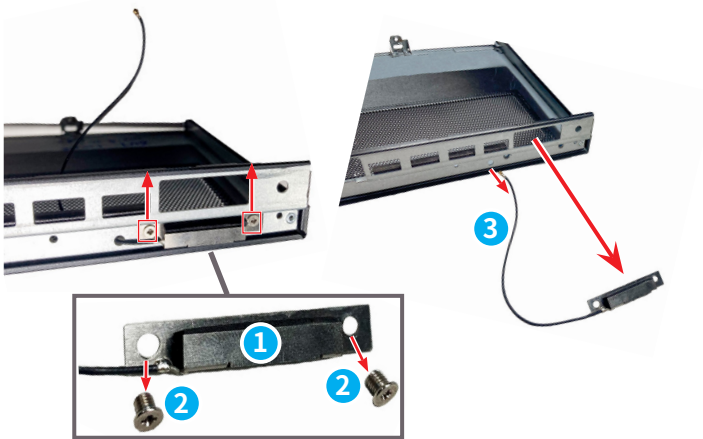
---

# Antenna Module

## Antenna Module Disassembly

---

1. Follow [Top Bracket Disassembly](#) to remove the front bezel and uncover the antenna module **1** underneath.
2. Remove the screws **2** that secure the antenna module **1** with a cross-head screwdriver.
3. Use your fingers to remove the antenna module **1** and antenna cable **3** off the top bracket.



---

## Antenna Module Assembly

---

To assemble the Antenna Module, follow the disassembly steps in reverse.

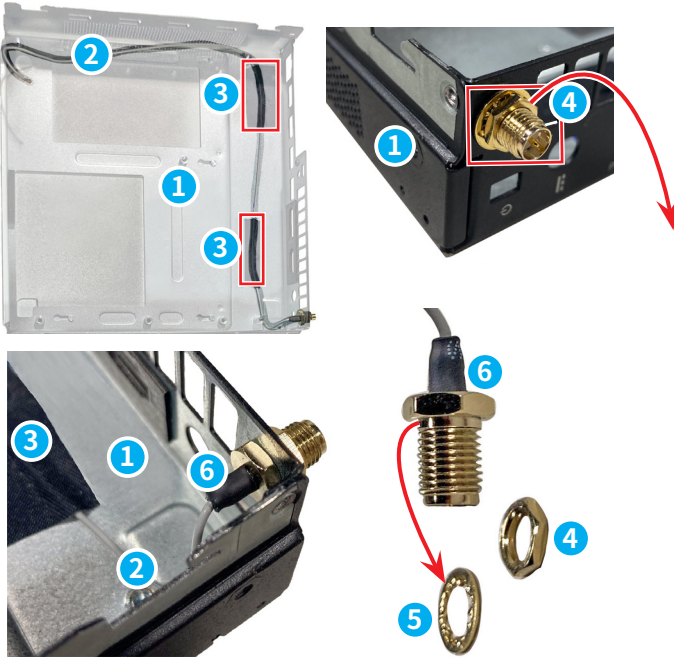
---

# Wi-Fi Antenna Connector

## Wi-Fi Antenna Connector Disassembly

---

1. Flip the bottom bracket **1** over and use finger to remove the antenna cables **2** and the antenna sticker **3** off the bottom bracket **1**.
2. Remove the SMA hex nut **4** with a hex socket.
3. Separate SMA hex nut **4** and spring washer **5** from the Wi-Fi antenna connector **6**.



## Wi-Fi Antenna Connector Assembly

---

To assemble the Wi-Fi Antenna Connector, follow the disassembly steps in reverse.

---

# Coin Battery

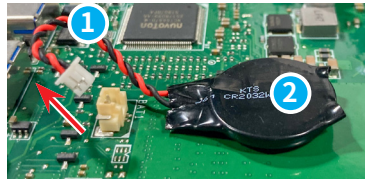
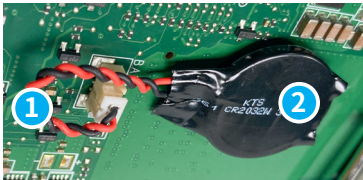
## Important

- *Danger of explosion if battery is incorrectly replaced. Replace only with the same or equivalent type recommended by the manufacturer.*
- *Avoid disposal of a battery into fire or a hot oven, or mechanically crushing or cutting of a battery, which can result in an explosion.*
- *Avoid leaving a battery in an extremely high temperature or extremely low air pressure environment that can result in an explosion or the leakage of flammable liquid or gas.*
- *Do not ingest battery. If the coin/button cell battery is swallowed, it can cause severe internal burns and can lead to death. Keep new and used batteries away from children.*

## Coin Battery Disassembly

---

1. Locate and disconnect the coin battery cable **1**.
2. Use your fingers to grab the edge of the coin battery **2** and gently pull it off. Remove the coin battery along with its cable from the mainboard.



## Coin Battery Assembly

---

To assemble the Coin Battery, follow the disassembly steps in reverse.

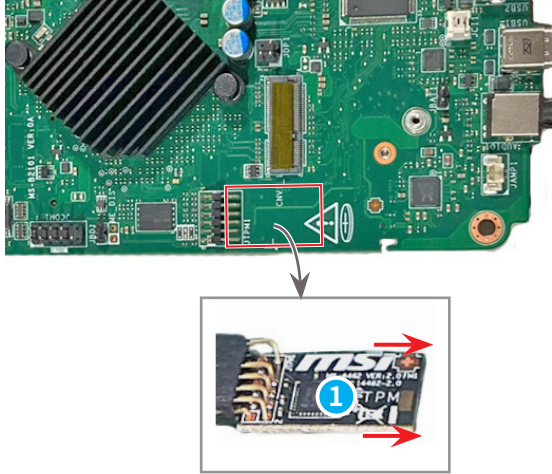
---

# TPM Module

## TPM Module Disassembly

---

1. Use your fingers to grab the edge of the TPM module **2** and gently pull it off the mainboard.



---

## TPM Module Assembly

---

To assemble the TPM Module, follow the disassembly steps in reverse.

---

# Intrusion Cable

## Intrusion Cable Disassembly

---

1. Loosen and remove the screws **1** that secure the intrusion switch **2** with a cross-head screwdriver.



---

## Intrusion Cable Assembly

---

To assemble the intrusion cable, follow the disassembly steps in reverse.

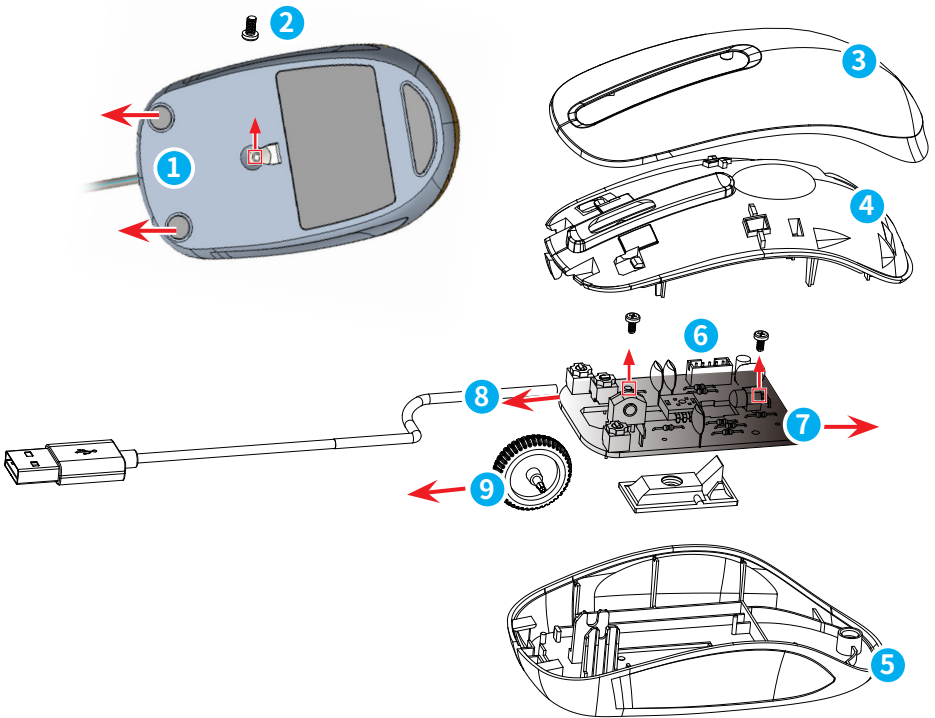
---

# Wired Mouse (Optional)

## Wired Mouse Disassembly

---

1. Remove the feet stickers **1** using a parallel screwdriver. Use a cross-head screwdriver to remove the screw **2**.
2. Separate the top case **3**, key plate **4** and bottom case **5** using your fingers.
3. Use a cross-head screwdriver to remove the screws **6** that secured the PCB **7**.
4. Remove the wired mouse USB cable **8**, wheel **9** and PCB **7** with your fingers.



## Wired Mouse Assembly

---

To assemble the wired mouse, follow the disassembly steps in reverse.

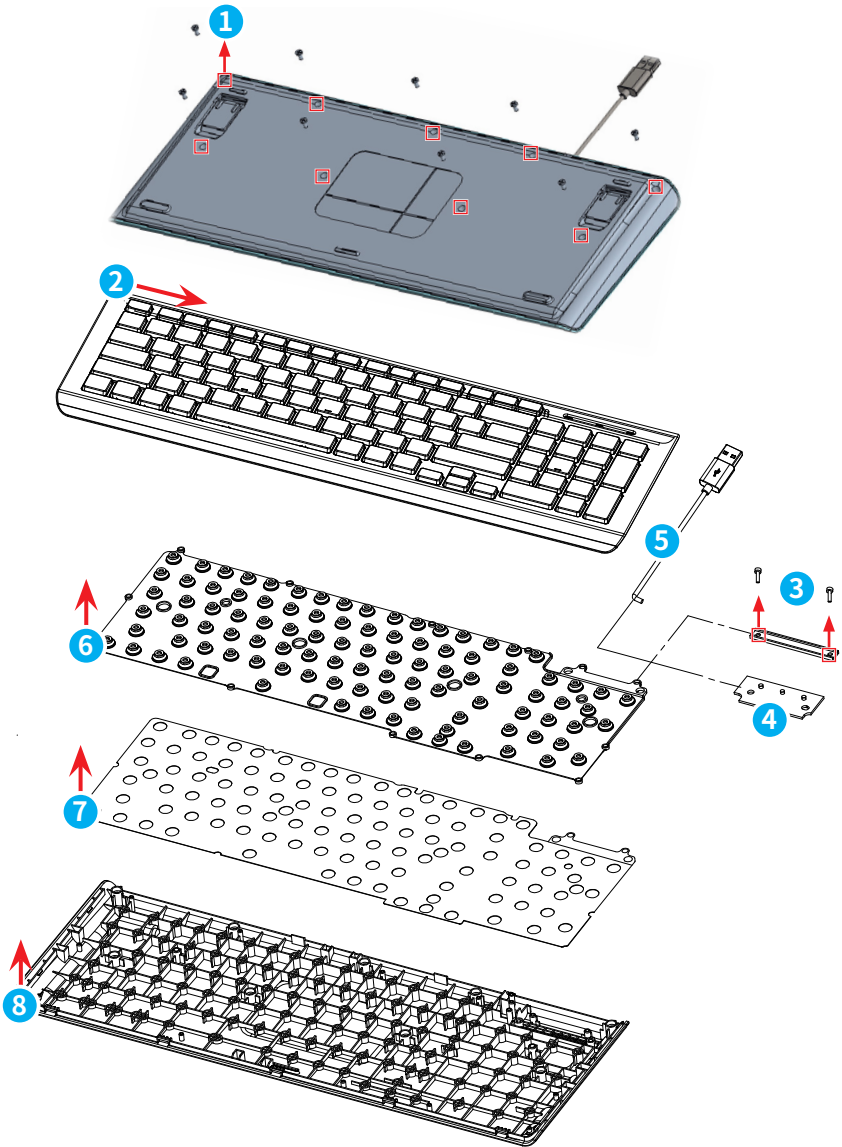
---

# Wired Keyboard (Optional)

## Wired Keyboard Disassembly

---

1. Loosen and remove the screws **1** with a cross-head screwdriver.
  2. Flip the keyboard over, use a pry tool to separate the top case **2**.
  3. Use a cross-head screwdriver to loosen and remove screws **3**, then detach the PCB **4** and wired keyboard USB cable **5** from the PCB with your fingers.
  4. Remove the rubber sheet **6** and the membrane **7** with your fingers to unveil the bottom case **8**.
-



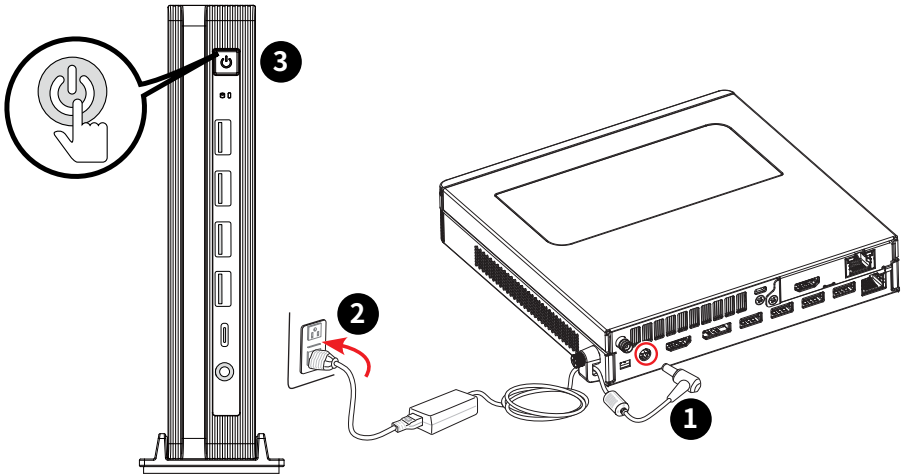
## Wired Keyboard Assembly

To assemble the wired keyboard, follow the disassembly steps in reverse.

---

# Powering Up After Maintenance

1. Connect the external power supply to the PC.
2. Plug the power cord into the electrical outlet.
3. Power on the PC.



## Important

- Use only the MSI provided AC adapter approved for use with this PC.
- If the power cord comes with a 3-pin plug, do not disable the protective earth pin from the plug. The PC must be connected to an earthed mains socket-outlet.
- Plug the power cord into an electrical outlet that is easily accessible at all times.
- Place the power cord in a way that people are unlikely to step on it. Do not place anything on the power cord.
- Always disconnect the power cord or switch the wall socket off if the PC would be left unused for a certain time to achieve zero energy consumption.

# Troubleshooting

Users may refer to the following tips or visit [MSI Support](#) and [Troubleshooting](#) for quick and easy troubleshooting when encountering common problems with the product. It is always suggested that users contact the authorized MSI service center for advanced tech support if needed.

## My system does not start.

- Check if the system is connected to an electrical outlet and it is turned on.
- Check if the power cord and all cables are connected firmly.

## The system can not be shut down.

It is best to shut down your computer using the Shut Down icon in the operating system. Using other methods, including those listed below, may result in data failure. If the Shut Down procedure does not work, choose one of the following steps:

- Press Ctrl+Alt+Del keys, then choose Shut Down.
- Press and hold the power button till the system is off.
- Unplug the power cable from the system.

## The Internet connection has problems.

- If you are having a problem connecting to your Internet Service Provider (ISP), check if the ISP is experiencing technical problems.
- Check the Network settings and connection and make sure the system is properly configured to Internet access.
- The wireless LAN data transfer speed is affected by distance and obstructions between devices and access points. To maximize the data transfer speed, choose the access point closest to your system.

## How to recover the system with the F3 Hotkey?

### Precautions for Using the System Recovery Function

- If your hard drive and system encountered non-recoverable problems, please use the F3 Hotkey recovery from the Hard Drive first to perform the System Recover Function.
- Before using the System Recovery Function, please back up the important data saved on your system drive to other storage devices.

### Recovering the system with the F3 Hotkey

1. Restart the PC.
2. Press the F3 hotkey on the keyboard promptly when the MSI greeting appears on the display.
3. On the [Choose an option] screen, select [Troubleshoot].
4. On the [Troubleshoot] screen, select [Restore MSI factory settings] to reset the system to the default settings.
5. On the [RECOVERY SYSTEM] screen, select [System Partition Recovery].
6. Follow the on-screen instructions to continue and complete the Recovery Function.

### **System speakers do not work.**

- Check the master volume setting in the Audio Mixer.
- If you are using an application that has its own volume control, check if the volume is muted.
- If you have connected an audio cable to the Headphone jack, disconnect it.
- If the system has OSD function, please adjust the volume of OSD.

### **My wired mouse or keyboard doesn't work.**

- First, check your hardware. If it still doesn't work, remove the USB hub and plug the device directly into the PC's USB port. Ensure the cables aren't damaged.

# Recycling Guidelines

In line with our commitment to environmental sustainability, this product is designed with separable plastic components to enhance plastic recycling quality. We kindly request that you responsibly recycle the recyclable plastic components of this product once it reaches the end of its useful life. Follow the instructions below to prepare plastic parts for recycling by eliminating non-recyclable materials.

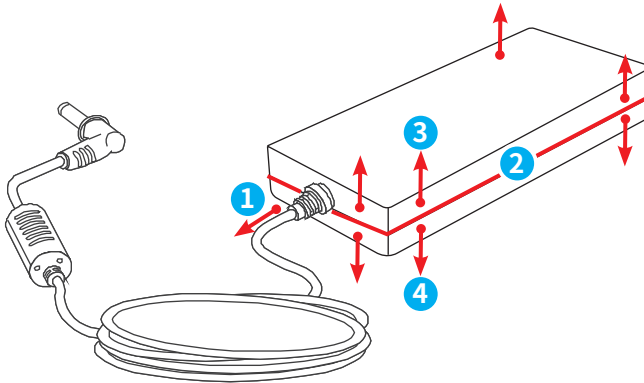
## Important

*Before recycling the separable plastic components, please use diagonal pliers to remove all the screw bosses with copper sticks, if any.*

## External Power Supply

---

1. Use diagonal pliers to cut the external power supply DC cable **1**.
2. Use heat gun to heat the between **2** of upper **3** and lower **4** cases of the power adapter, and then use a parallel screwdriver to separate the cases.
3. The disassembled upper **3** and lower **4** cases of the power adapter can be recycled by qualified recyclers.



## Wired Mouse (Optional)

---

1. Refer to [Wired Mouse Disassembly](#) to disassemble the wired mouse.
  2. Please recycle the top case [3](#), key plate [4](#), bottom case [5](#) and wired mouse USB cable [8](#) to qualified recyclers.
- 

## Wired Keyboard (Optional)

---

1. Refer to [Wired Keyboard Disassembly](#) to disassemble the wired keyboard.
  2. Please recycle the top case [2](#), bottom case [8](#) and wired keyboard USB cable [5](#) to qualified recyclers.
-

# Product End-of-Life Instructions



**Important**

## MSI Environmental Information

Information on MSI's Environmental initiatives, policies, programs and goals can be found at [Environmental Sustainability Policy](#).

## Purpose

This information is to provide the guidance to recyclers on the presence of materials and components at the product level, as required by the EU WEEE and amending Directive.

## Information on Component and Material Identification

The following substances, preparations, or components should be disposed of or recovered separately from other WEEE in compliance with Article 4 of EU Council Directive 75/442/EEC.

Identify materials for materials and components of the waste electrical and electronic equipment list.

\*1: The following item numbers correspond with those in [Product Components and Accessories](#).

Materials	Item*1	Location
Polychlorinated biphenyl (PCB) containing capacitors and all polychlorinated biphenyls and polychlorinated terphenyls (PCB/PCT) containing electrical equipment	—	Absent
Mercury containing components, such as switches or backlighting lamps	—	Absent
Batteries	<a href="#">12</a>	Battery
Printed circuit boards of mobile phones generally, and of other devices if the surface of the printed circuit board is greater than 10 square centimeters	<a href="#">6</a>	Mainboard
	<a href="#">15</a>	TPM Module
	<a href="#">19</a>	External Power Supply Main PCB
	<a href="#">22-1</a>	Wired Mouse PCB
	<a href="#">23-1</a>	Wired Keyboard PCB
Toner cartridges, liquid and paste, as well as color toner	—	Absent

Materials	Item*1	Location
Plastic containing abominated flame retardants	<a href="#">1</a>	Front Bezel
	<a href="#">3</a>	Top Bracket
	<a href="#">20</a>	External Power Supply
	<a href="#">7</a>	Thermal Module
	<a href="#">22</a>	Wired Mouse
	<a href="#">23</a>	Wired Keyboard
Asbestos waste and components which contain asbestos	—	Absent
Cathode ray tubes	—	Absent
Chlorofluorocarbons (CFC), Hydrochlorofluorocarbons (HCFC) or Hydrofluorocarbons (HFC), Hydrocarbons (HC)	—	Absent
Gas discharge lamps	—	Absent
Liquid crystal displays (together with their casing where appropriate) of a surface greater than 100 square centimeters and all those back-lighted with gas discharge lamps	—	Absent
External electric cables	<a href="#">19</a>	Power Cord
	<a href="#">21</a>	Power Button Switch Cable
	<a href="#">20</a>	External Power Supply
	<a href="#">22-2</a>	Wired Mouse USB Cable
	<a href="#">23-2</a>	Wired Keyboard USB Cable
Components containing refractory ceramic fibers	—	Absent
Components containing radioactive substances, or materials that become radioactive	—	Absent
Electrolytic capacitors containing substances of concern (height > 25 mm, diameter > 25 mm or proportionately similar volume)	<a href="#">19</a>	External Power Supply

Materials	Item*1	Location
Beryllium and its compounds (including Beryllium Oxide)	—	Absent
Liquids	—	Absent

## Product Take-Back Service

Waste electrical equipment may contain hazardous substances and thus endanger human health & the environment. Proper disposal is therefore required. MSI provides free recycling of EPEAT-registered products to ensure that the product reaches the end of its useful life and that it is recycled responsibly.

To properly recycle your equipment through this service, please follow the steps:

1. Please delete your personal data from your waste equipment.
2. [CLICK HERE](#) to learn how to recycle your end-of-life product.
3. Find the MSI recycling location nearby on the website.
4. Contact the designated recycling location by phone or email to schedule your pickup. The customers are responsible for any shipping and delivery charges.

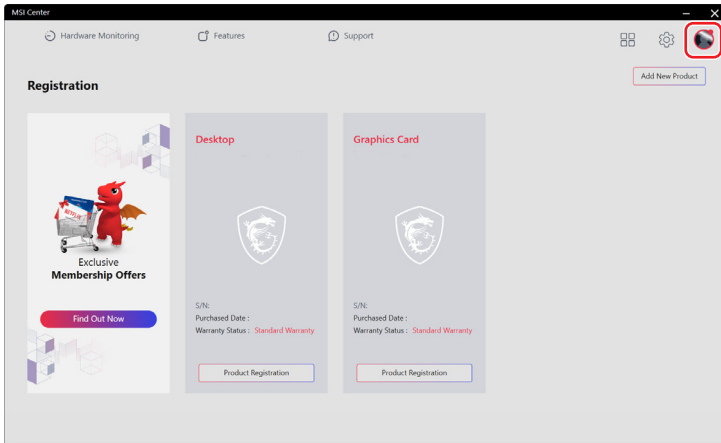
# Using MSI Center

# Login and Register

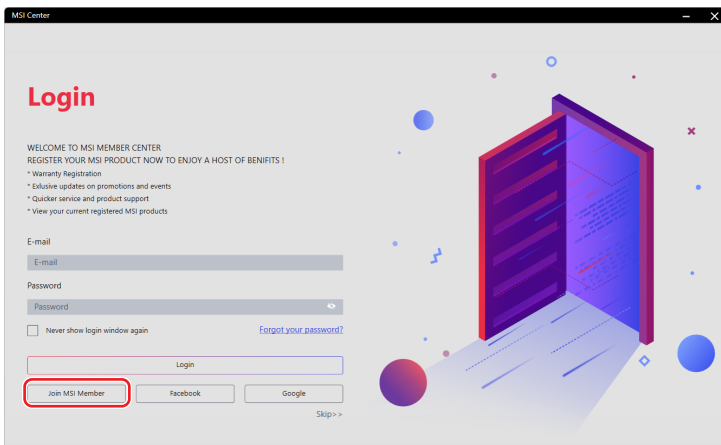
Before using MSI Center, it is recommended that you create your own account and register your MSI product to get full benefits from MSI Center at once.

## Create an Account

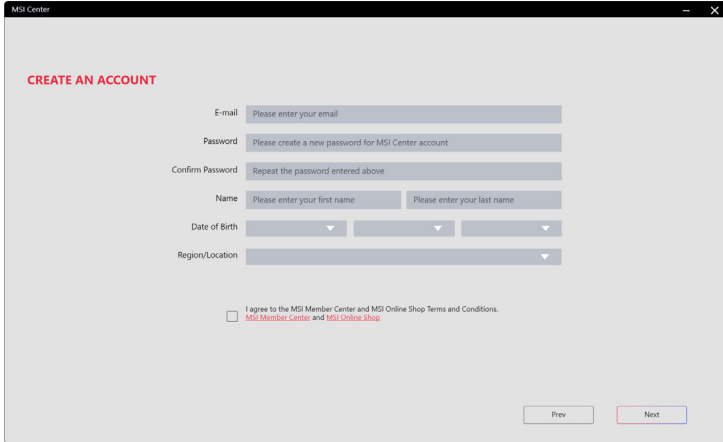
1. Make sure the Internet connection works properly.
2. Activate MSI Center. Click the profile icon at the upper right corner and click [Login].



3. Select [Join MSI Member].



4. Follow the on-screen instructions to create a personal account.



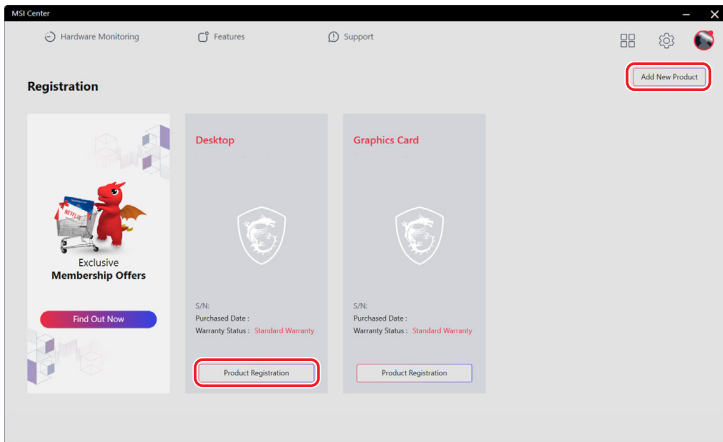
The screenshot shows the 'CREATE AN ACCOUNT' form in the MSI Center application. The form includes the following fields and options:

- E-mail:** A text input field with the placeholder 'Please enter your email'.
- Password:** A text input field with the placeholder 'Please create a new password for MSI Center account'.
- Confirm Password:** A text input field with the placeholder 'Repeat the password entered above'.
- Name:** Two text input fields for 'Please enter your first name' and 'Please enter your last name'.
- Date of Birth:** Three dropdown menus for selecting day, month, and year.
- Region/Location:** A dropdown menu.
- Agreement:** A checkbox with the text 'I agree to the MSI Member Center and MSI Online Shop Terms and Conditions.' and links to 'MSI Member Center' and 'MSI Online Shop'.
- Navigation:** 'Prev' and 'Next' buttons at the bottom right.

## Product Registration

Once a personal account is created, you may log in and start to register your products.

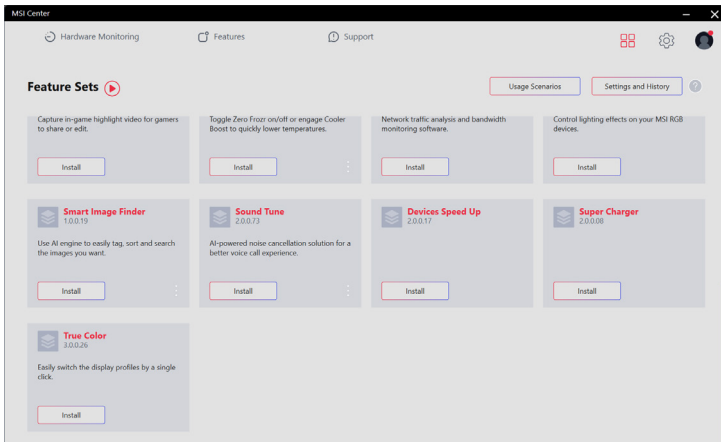
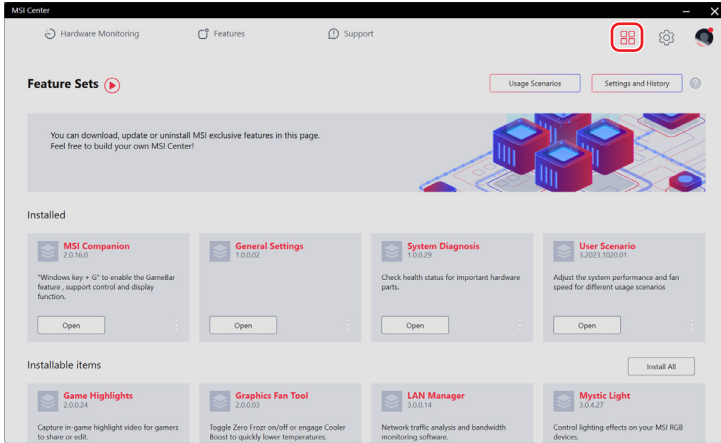
1. MSI Center will automatically detect your MSI devices. Click [Product Registration] and follow the on-screen instructions to complete the registration.
2. To register more MSI multimedia accessories connected to your system, click [Add New Product] and follow the on-screen instructions to add and register your accessories.



# Feature Sets

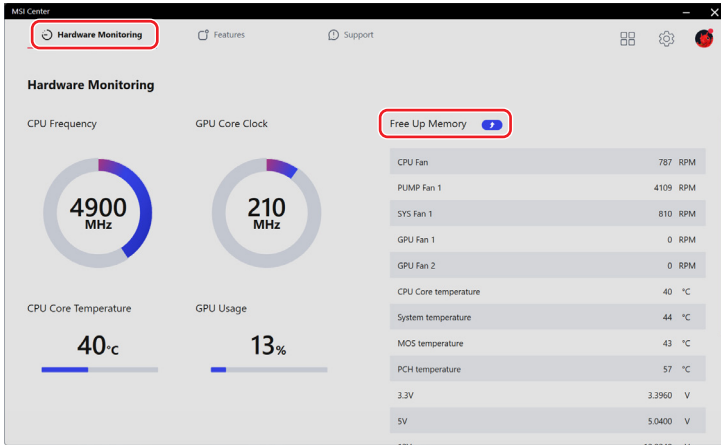
Users can download, update or uninstall MSI exclusive features in Feature Sets.

1. Click the [Feature Sets] icon at the upper right corner.
2. Install or uninstall any MSI features to meet your personal needs.



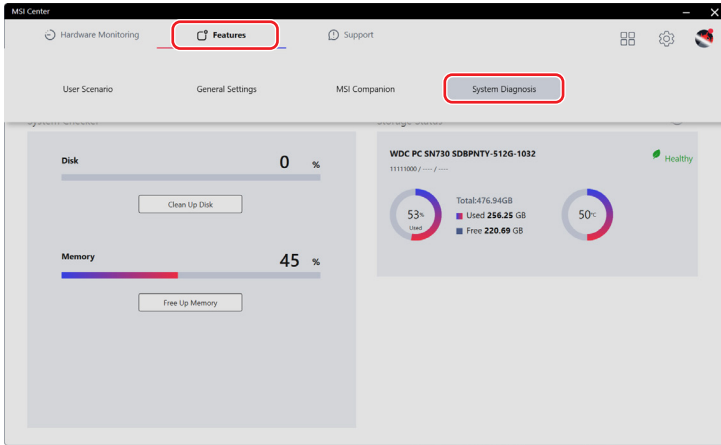
# Hardware Monitoring

Hardware Monitoring provides real-time status of the CPU, GPU, memory, fans, etc. Click [Free Up Memory] to release system memory that is no longer required.



# Features

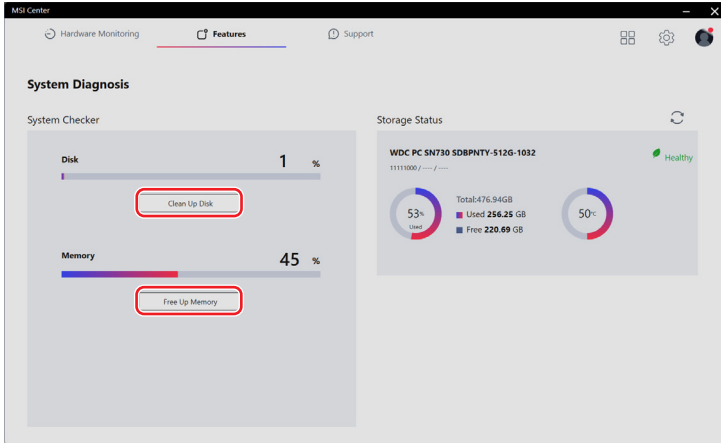
[Features] will vary depending on the features users have installed through [Feature Sets].



# System Diagnosis

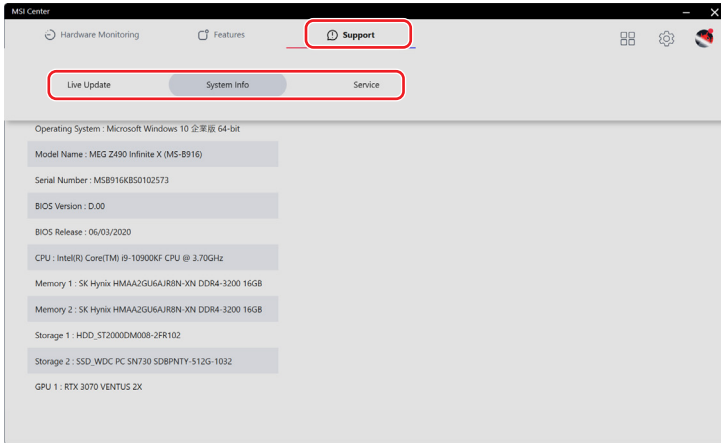
[System Diagnosis] provides [System Checker] for users to clean up their hard drives and free up system memory while [Storage Status] helps users keep their storage health in check.

- To clean up the storage, click [Clean Up Disk], select the drive you want to clean up from the pop-up menu, and follow the on-screen instructions to clean up the storage.
- To free up memory, click [Free Up Memory] and MSI Center will instantly release system memory that is no longer required.



# Support

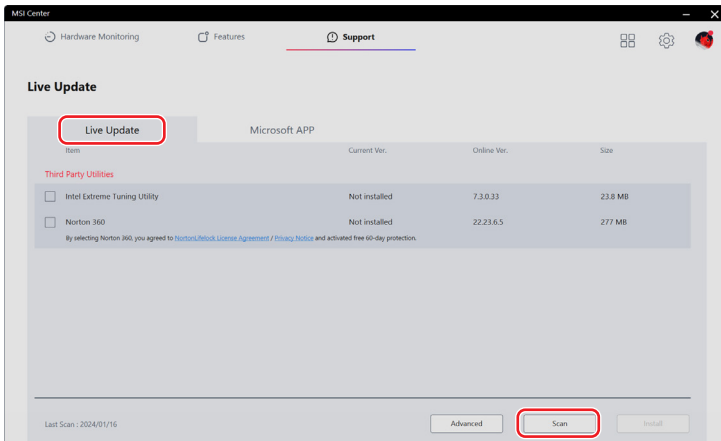
Support offers various customer support channels to fulfill the needs of every user.



## Live Update

### Live Update

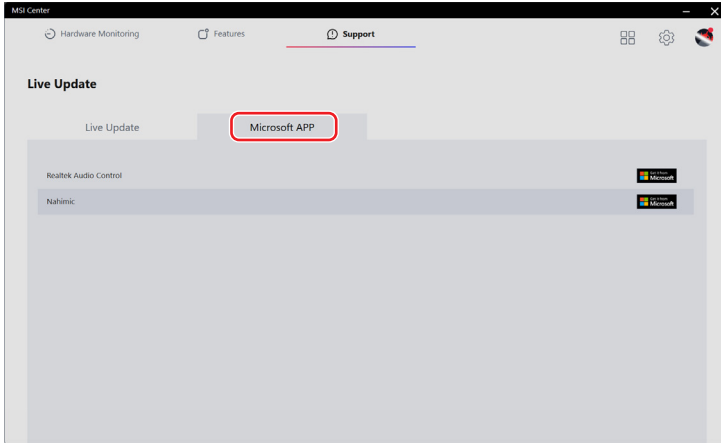
It is recommended that users click [Scan] under [Live Update] to get the latest MSI or third-party utilities for update.



## Microsoft APP

When using this function for the very first time, analyzing the system with Live Update is a must.

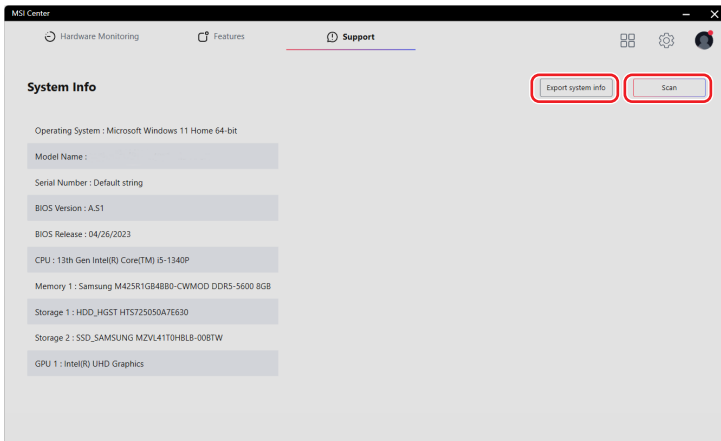
1. Click [Scan] under [Live Update].
2. Click [Microsoft APP] where a list of compatible applications on Microsoft Store are displayed.
3. Select a desired application and follow the on-screen instructions to install the application.



## System Info

System Info shows read-only system information.

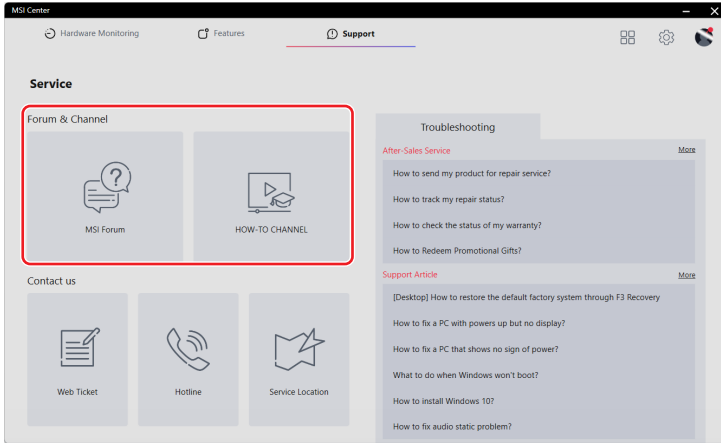
- [Export System Info]: Exporting the current system information data to a .txt file.
- [Scan]: Scanning the system for the latest information.



# Service

## Forum & Channel

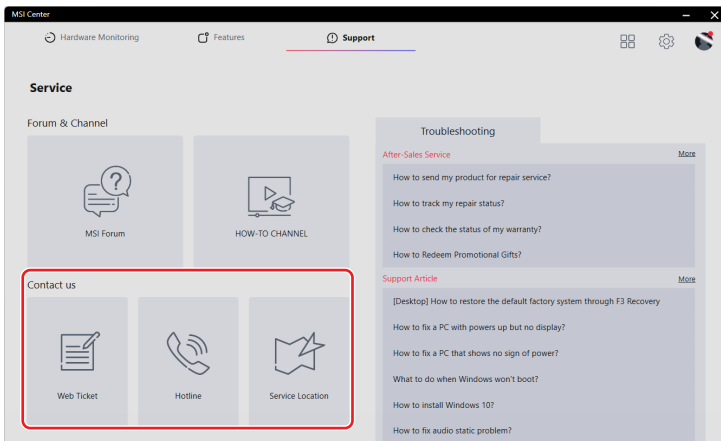
- [MSI Forum]: Directing users to MSI Global Forum for discussion with global users.
- [How-To Channel]: Directing users to MSI HOW-TO CHANNEL for guides, tips & tricks that help you get more from your MSI products.



## Contact Us

Users may contact MSI via the following channels.

- Click [Web Ticket] to reach MSI Member Center.
- Click [Hotline] to talk to a service representative.
- Click [Service Location] to locate a nearby repair service shop.



# Troubleshooting

- [After-Sales Service]: Providing instructions on repair, warranty and other after-sales services.
- [Support Article]: Offering advice on how to troubleshoot your MSI products.

If further assistance is needed, click [More] for MSI online service and support.

