



PRO Series

LCD Monitor

PRO MP275PHGN E14

Service Guide

Contents

| | |
|--|----------|
| Copyright and Trademarks Notice..... | 3 |
| Revision..... | 3 |
| How to Use this Service Guide | 3 |
| Safety Instructions..... | 4 |
| Power..... | 4 |
| Enviroment..... | 4 |
| Warranty Policy | 5 |
| Upgrade and Service | 5 |
| Publicly Available Service Information | 6 |
| Disassembly & Assembly..... | 8 |
| Product Components and Accessories | 9 |
| Product Upgradeability and Repairability | 10 |
| Recommended Tools..... | 11 |
| Screw List | 11 |
| Fastener Parts | 11 |
| Preparation for Disassembly | 12 |
| Stand base..... | 14 |
| Stand base Disassembly..... | 14 |
| Stand base Assembly | 15 |
| Rear Cover | 16 |
| Rear Cover Disassembly..... | 16 |
| Rear Cover Assembly..... | 18 |
| Navi Board & Navi Key | 20 |
| Navi Board & Navi Key Disassembly..... | 20 |
| Navi Board & Navi Key Assembly | 21 |
| Speakers..... | 22 |
| Speaker Disassembly | 22 |
| Sperker Assembly..... | 23 |

| | |
|--|-----------|
| LCD Panel..... | 24 |
| LCD Panel Disassembly..... | 24 |
| LCD Panel Assembly..... | 26 |
| Mainboard&USB HUBboard..... | 27 |
| Mainboard&USB HUBboard Disassembly..... | 27 |
| Mainboard&USB HUBboard Assembly..... | 27 |
| Power Board (Internal Power Supply)..... | 28 |
| Power Board (Internal Power Supply) Disassembly..... | 28 |
| Power Board (Internal Power Supply) Assembly..... | 29 |
| Troubleshooting..... | 30 |
| Powering Up After Maintenance | 31 |
| Recycling Guidelines..... | 32 |
| Stand base | 32 |
| Both plates..... | 33 |
| VESA plate..... | 34 |
| Stand enclosure..... | 35 |
| Rear Cover..... | 37 |
| Removal of Deco Strip & LCD Bezel..... | 38 |
| Product End-of-Life Instructions..... | 41 |
| Purpose..... | 41 |
| Information on Component and Material Identification | 41 |
| Product Take-Back Service..... | 42 |
| OSD Setup..... | 44 |
| OSD Setup..... | 45 |
| Navi Key | 45 |
| OSD Menus..... | 47 |
| Image | 47 |
| Input Source..... | 48 |
| Navi Key | 49 |
| Settings..... | 49 |

Copyright and Trademarks Notice

Copyright © 2023 Micro-Star Int'l Co., Ltd. All rights reserved.

The MSI logo used is a registered trademark of Micro-Star Int'l Co., Ltd. Third-party trademarks and names are the properties of their respective owners. No warranty as to accuracy or completeness is expressed or implied. MSI reserves the right to make changes to this document without prior notice.

Revision

V2.0,2025/12

How to Use this Service Guide

This Service Guide provides in-depth illustration of disassembling/assembling the product. Since the topics in this guide may be related, it is recommended that you read it from cover to cover first. After that, you may go directly to any specific topic that most meets your immediate needs.

Safety Instructions

Adhere to safety precautions when handling the product to prevent harm or damage to individuals or the product's functionality.

Power

- If the power cord comes with a 3-pin plug, do not disable the protective earth pin from the plug. The monitor must be connected to an earthed mains socket-outlet.
- Disconnect all power sources and place the product on a steady surface before disassembly/assembly.
- When unplugging the power cord, always hold the connector part of the cord. Never pull the cord directly.
- Place the power cord in a way that people are unlikely to step on it. Do not place anything on top of the power cord.
- If this product comes with an adapter, use only the MSI provided AC adapter approved for use with this product.

Environment

- Do not place the product in environments subject to mist, smoke, vibration, excessive dust, salty or greasy air, or other corrosive gases and fumes.
- To avoid electrostatic discharge, use an anti-static wrist strap before handling components. Always handle electrostatic-sensitive components, parts, and assemblies only at static-free work areas.
- Handle components with care. Do not touch the pins or contacts on a component.
- Place components on a grounded anti-static pad or on the bed that came with the components whenever the components are separated from the product.
- Handle the display panel with extra care as it is fragile and could break.
- Do not perform any maintenance with wet hands.
- Prevent foreign substances, such as water, other liquids or chemicals, from entering the product while performing disassembly/assembly.
- After assembly, ensure that all screws are replaced and no stray screws remain inside the product.

Warranty Policy

All MSI products are covered by a standard manufacturer's warranty, which provides protection against defects in materials and workmanship. The warranty period ranges from one (1) to three (3) years, depending on the specific product. In addition, a limited warranty applies to certain components of the purchased product, such as the battery or other included accessories. Please refer to our official website for information about the limited product warranty: <https://www.msi.com/page/warranty>

Upgrade and Service

Available hardware features may only be offered as part of an upgrade, repair, replacement, or extended warranty service offered by MSI or an authorized service provider.

Damages caused by servicing of products not authorized by MSI or the use of modified or non-MSI authorized parts or components are not covered by MSI Limited Warranty Agreement.

Visit [Product Service Policy](#) to obtain these services offered by MSI.

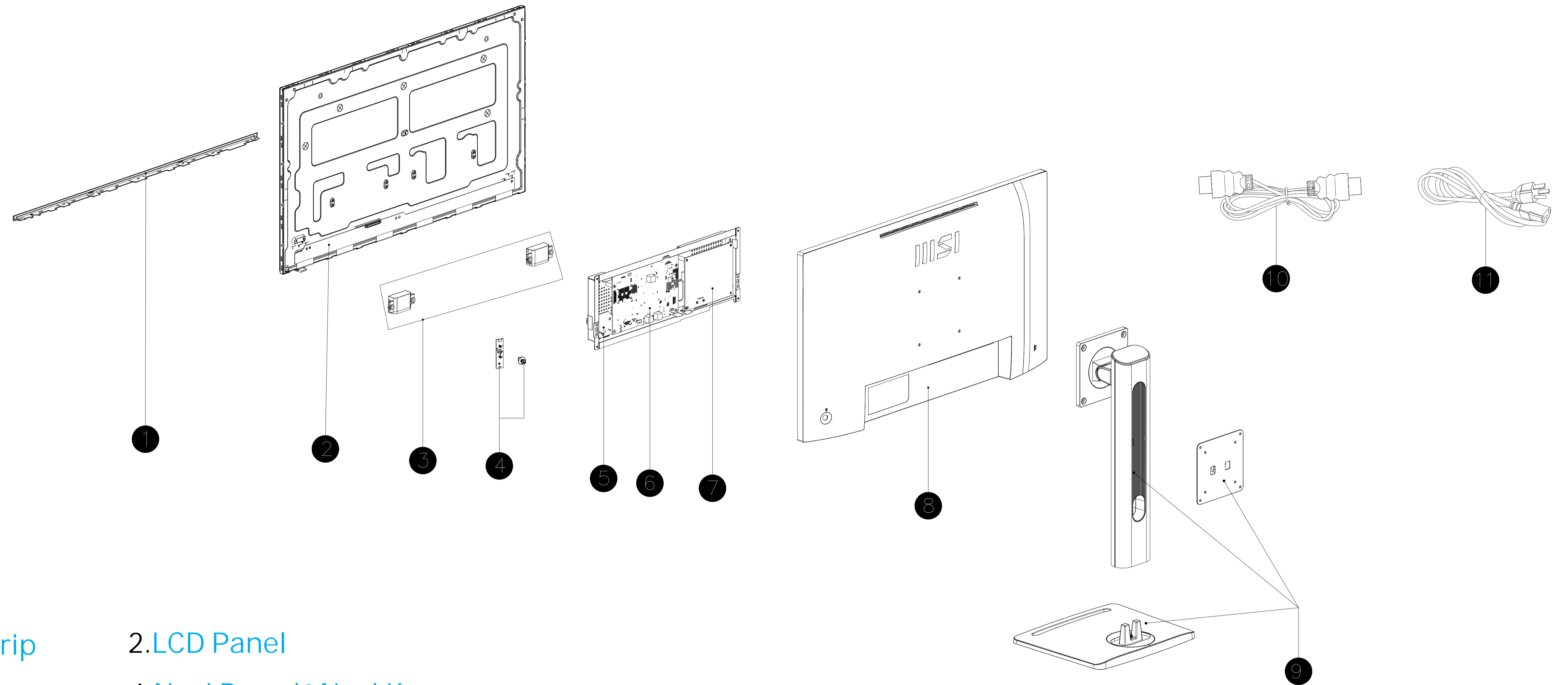
Publicly Available Service Information

| Service Information | Section |
|--|---|
| Disassembly instructions including identifying the required tools. | <u>Product Components and Accessories</u> <u>Recommended Tools</u> |
| Exploded diagram of parts. | <u>Product Components and Accessories</u> |
| List of spare parts including manufacturer-approved spare parts and how to obtain them. | <u>Product Upgradeability and Repairability</u> |
| Maintenance procedures or guidance on where to obtain the procedures. | <u>Monitor Support</u> <u>OSD Setup</u> |
| Troubleshooting instructions, software diagnostic tools, troubleshooting videos or other troubleshooting guidance. | <u>Troubleshooting</u> |
| Instructions on how to obtain software updates (not applicable to display products). | <u>Monitors Support Articles</u> |
| Instructions on how the user can remove personal data. If the instructions require destruction of the storage, instructions to replace the storage shall be provided (not applicable to display products). | N/A |

| It is acceptable for service instructions to exclude information that, as determined by the manufacturer: | |
|---|-----|
| a) May expose the user to risk of injury, or | N/A |
| b) Breaches intellectual property rights, or | N/A |
| c) Compromises user privacy or security, or | N/A |
| d) Involves the disassembly of a battery pack or power supply | N/A |
| If claiming any of the four exclusions above the manufacturer shall demonstrate how the product is restored to normal operating condition after being repaired. Repair may include replacement of the component(s) associated with the exclusion. | N/A |

Disassembly & Assembly

Product Components and Accessories



- 1. Deco Strip
- 2. LCD Panel
- 3. Speakers
- 4. Navi Board & Navi Key
- 5. USB HUB Board
- 6. Mainboard
- 7. Power Board (Internal Power Supply)
- 8. Rear Cover
- 9. Stand base
- 10. Signal cable (HDMI™) (External electric cables)
- 11. Power Cord (External power cables)

Product Upgradeability and Repairability

Hardware features for upgradeable, repairable or replaceable using only commonly available tools and listing of replaceable spare parts by products can be obtained through [Product Service Policy](#). For replacement, repair, or upgrade methods, please refer to the hyperlinks in the table below.

| Hardware feature items | Upgradeable | Repairable | Replaceable | Soldering |
|--|-------------|------------|------------------------|-----------|
| Display Panel/display assembly | N/A | N/A | Yes (TCO certified) | N/A |
| PCBA (System board/motherboard) | N/A | N/A | Yes (TCO certified) | N/A |
| External/Internal PSU | N/A | N/A | Yes | N/A |
| External power cables | N/A | N/A | Yes | N/A |
| External electric cables (eg. HDMI™,VGA) | N/A | N/A | Yes | N/A |

Recommended Tools

The following tools may be needed while performing the disassembly and assembly procedures.

- Cross-head screwdriver
- Parallel screwdriver (optional)
- Tweezers
- Pry tool
- Diagonal pliers (optional)
- Heat gun (optional)
- Anti-static gloves
- Anti-static wrist strap (optional)
- Anti-static mat with grounding wire (optional)
- Anti-static wrist strap (optional)

Screw List

Please refer to the screw list below while proceeding the disassembly and assembly of the computer.

Note: This screw list is for reference only and may vary from models to models. It is highly recommended that users contact the authorized service center for further assistance.

| Component | Screw Type | Quantity |
|-----------------|------------|----------|
| Deco strip | M2.5*4 | 5 |
| Power Board | M3*6 | 4 |
| Shielding Cover | M3*3 | 4 |
| Mainboard | M3*6 | 4 |

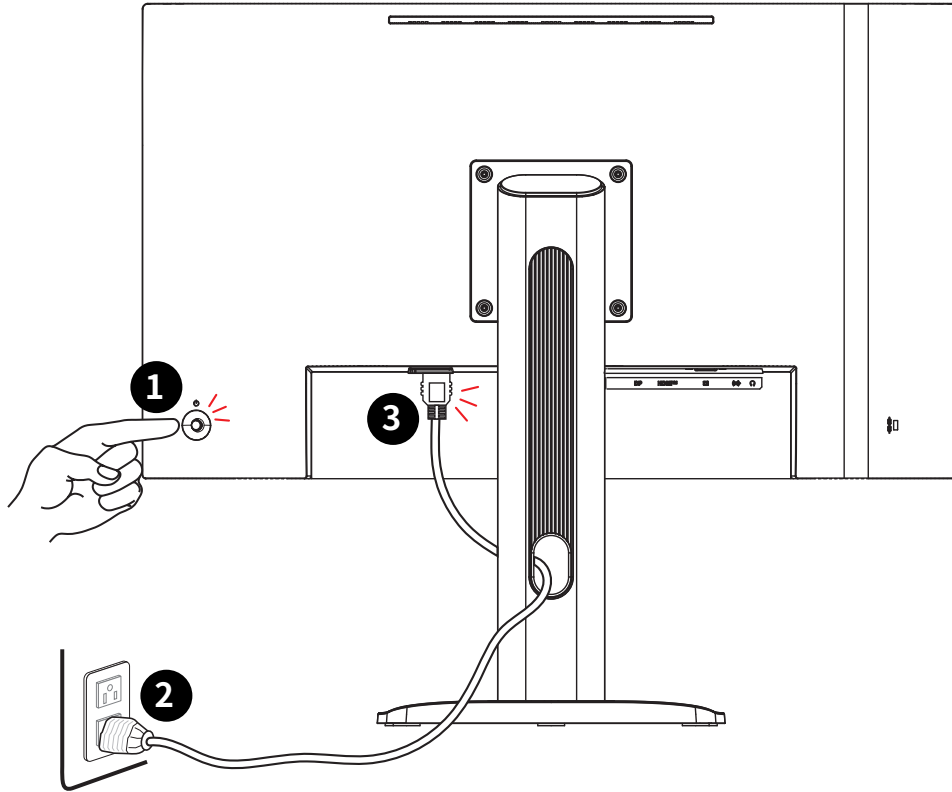
Fastener Parts

Refer to the following list of fastener parts. The fasteners shall be reusable during product disassembly and reassembly. In the event of loss or damage, replacement fasteners may be purchased through the [MSI Web Ticket](#).

| Components | Reusable | Resupply | |
|-----------------------------|----------|----------|--------------------------------|
| Screws (ref. Screw List) | Yes | Yes | MSI Web Ticket |
| Stand base | Yes | Yes | MSI Web Ticket |

Preparation for Disassembly

1. Power off the monitor and your computer.
2. Disconnect the power cord of your monitor and PC from the electrical outlet.
3. Disconnect the all cables and power cord from the monitor.



 **Important**

- *Disconnect all power sources and place the monitor on a steady surface before disassembly/assembly.*
- *When unplugging the power cord, always hold the connector part of the cord. Never pull the cord directly.*
- *Do not place the monitor in environments subject to mist, smoke, vibration, excessive dust, salty or greasy air, or other corrosive gases and fumes.*
- *To avoid electrostatic discharge, use an anti-static wrist strap before handling electrostatic-sensitive components.*
- *Handle the display panel with extra care as it is fragile and could break.*
- *Do not perform any maintenance with wet hands.*
- *After assembly, ensure that all screws are replaced and no stray screws remain inside the monitor.*

Stand base

Stand base Disassembly

1. Place the monitor face down on a steady, protected surface.
2. Locate and remove the screws that secure the stand **1**.
3. Lift up and remove the stand **2** from the monitor.



Stand base Assembly

1. Place the monitor face down on a steady, protected surface.
2. Align the screw holes on the stand with the screw holes on the rear cover.
3. Replace and fasten the screws ① to secure the stand ②.



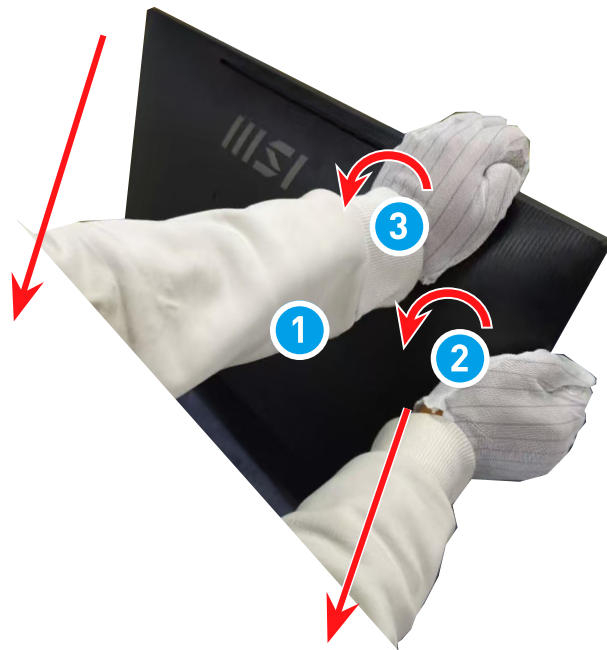
Rear Cover

Rear Cover Disassembly

1. Place your thumbs on the rear cover **1**, and other fingers **2** against the front bezel. Press down your thumbs **3** to open top, left and right side of the rear cover.

 **Important**

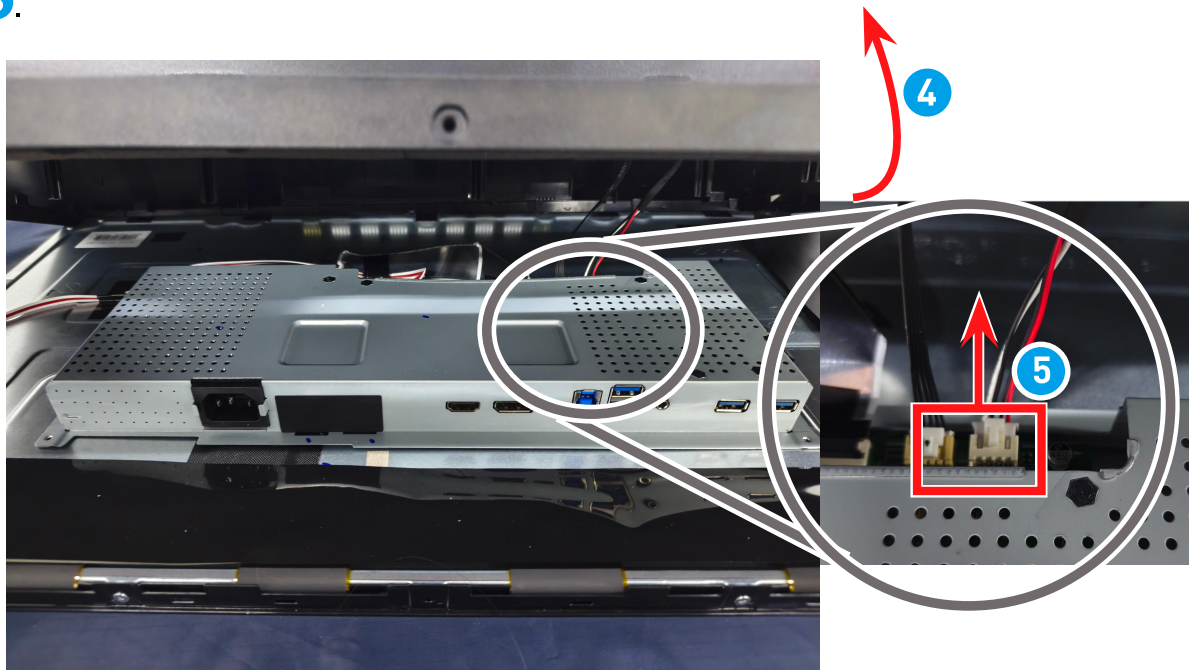
- Avoid finger pressure on the screen surface, it may damage the display.
-



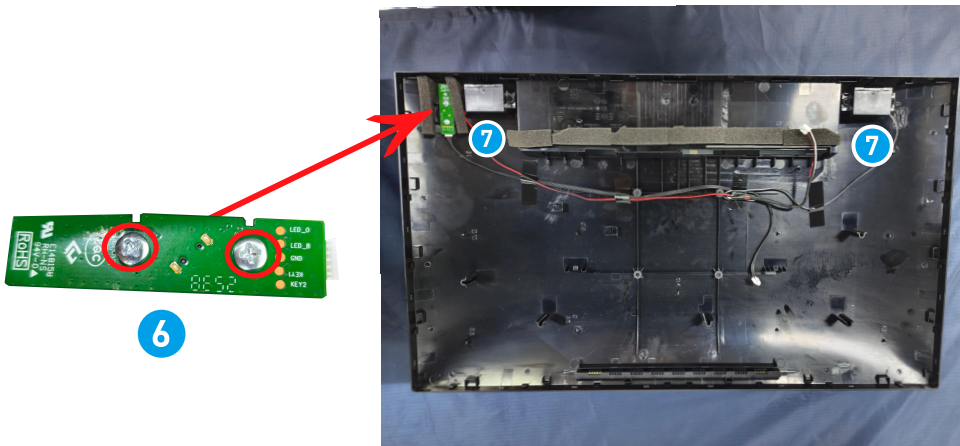
2. Use a pry tool to carefully pry off the bottom side of the rear cover.



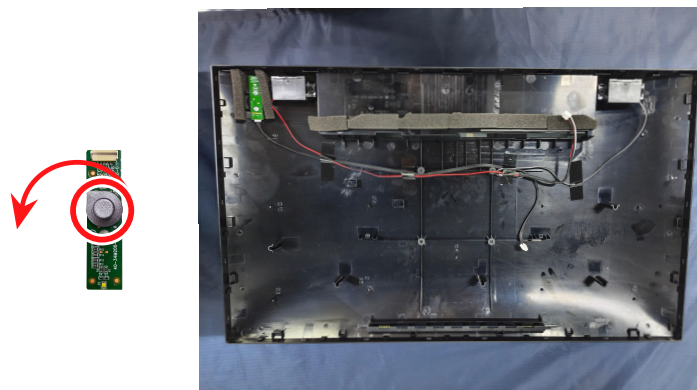
3. Gently lift the rear cover up ④ and be careful when disconnecting speaker cables ⑤.



4. Remove the Navi Key ⑥ and remove speaker ⑦

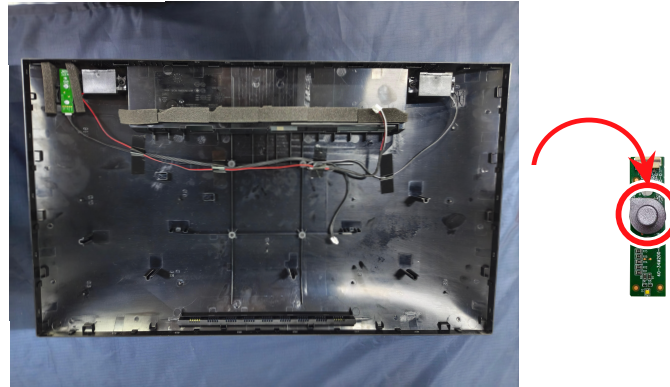


5. Remove Navi Key to complete.

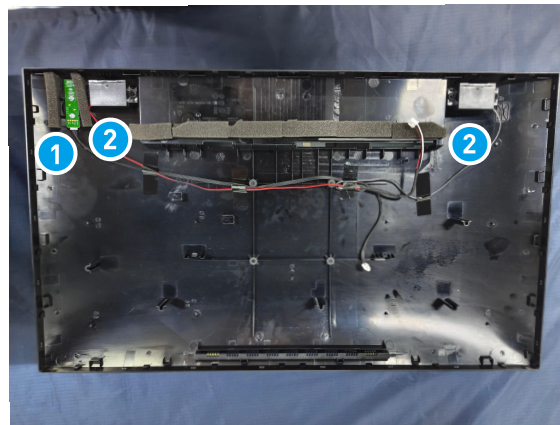


Rear Cover Assembly

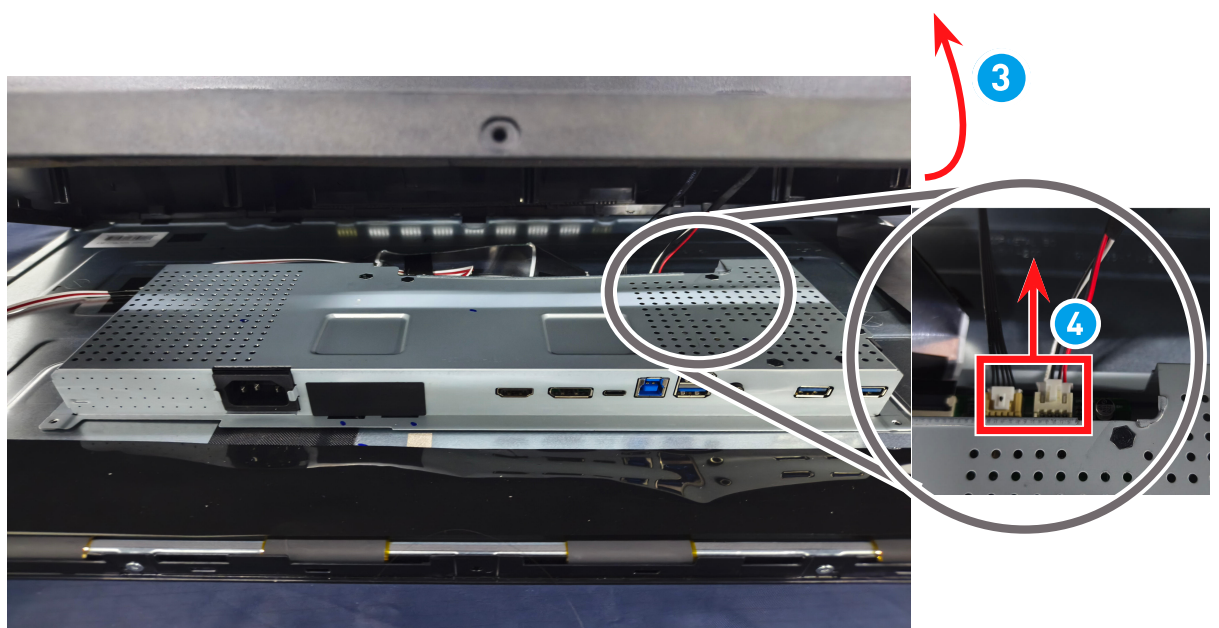
1. Insert Navi Key to start assembling the rear cover.



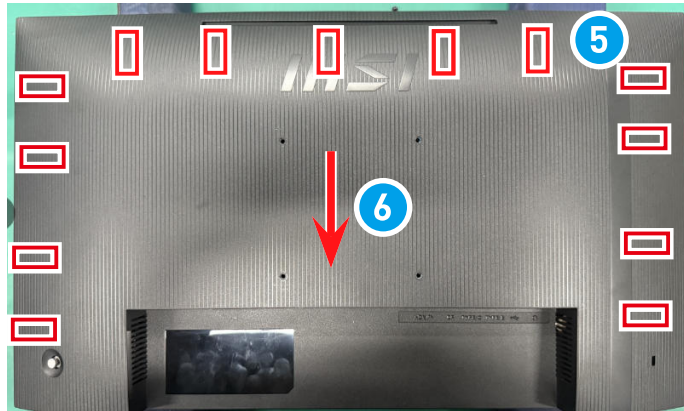
2. Carefully attach the Navi Board **1**, speakers **2** to its position and route their cables.



3. Connect speaker cables **3** to the mainboard carefully, then close the rear cover **4**.

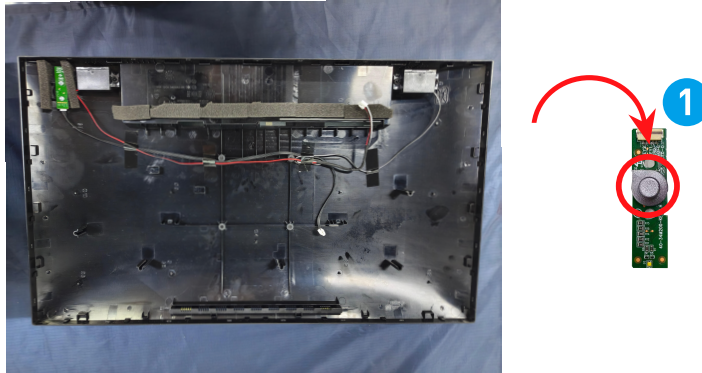


-
4. Align the tabs on the rear cover with the slots **5**. Gently push the rear cover downwards **6** to finish.

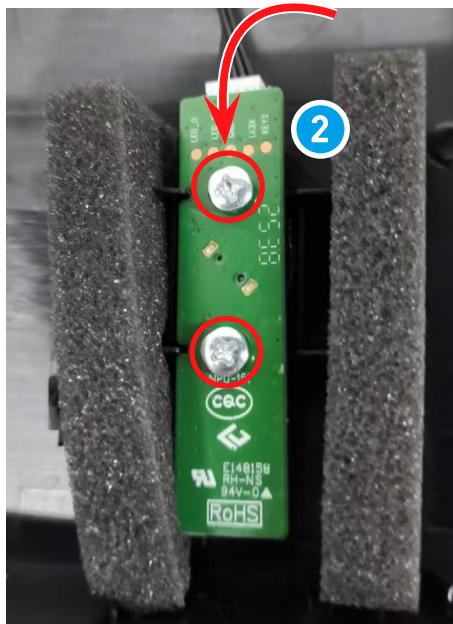


Navi Board & Navi Key Assembly

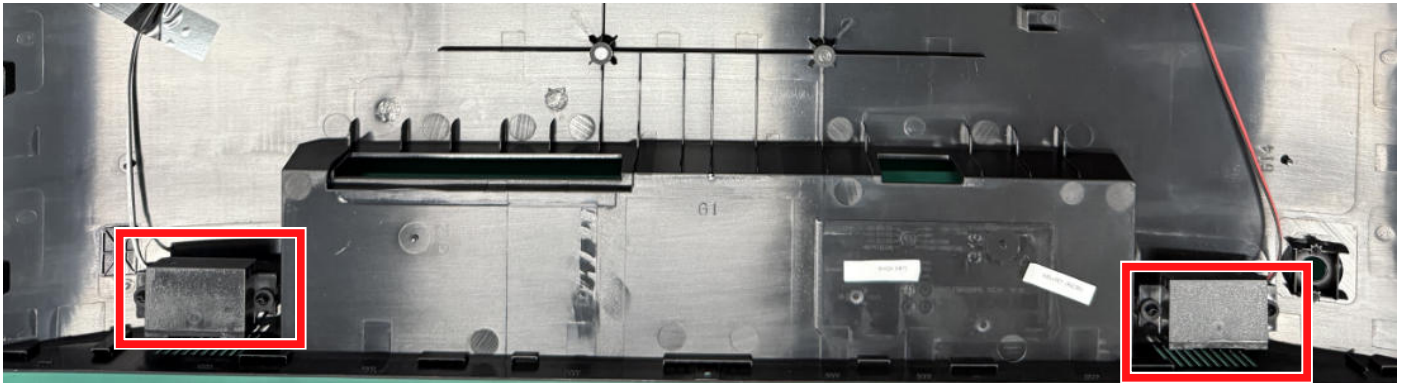
1. Insert Navi Key **1** to start assembling the rear cover.



2. Align and replace the Navi key board **2** onto the rear cover.



Speakers

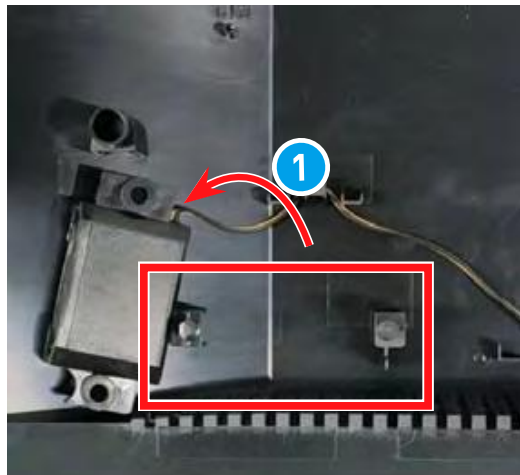


Speaker Disassembly

1. Locate speakers.

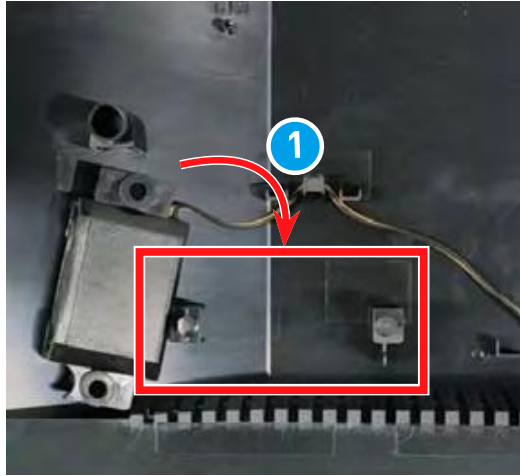


2. Disassemble speakers from the retainers **1** and carefully deroute speaker cables.



Speaker Assembly

1. Align speaker cables and secure speakers to retainers ①.



2. Route and connect the speaker cables.

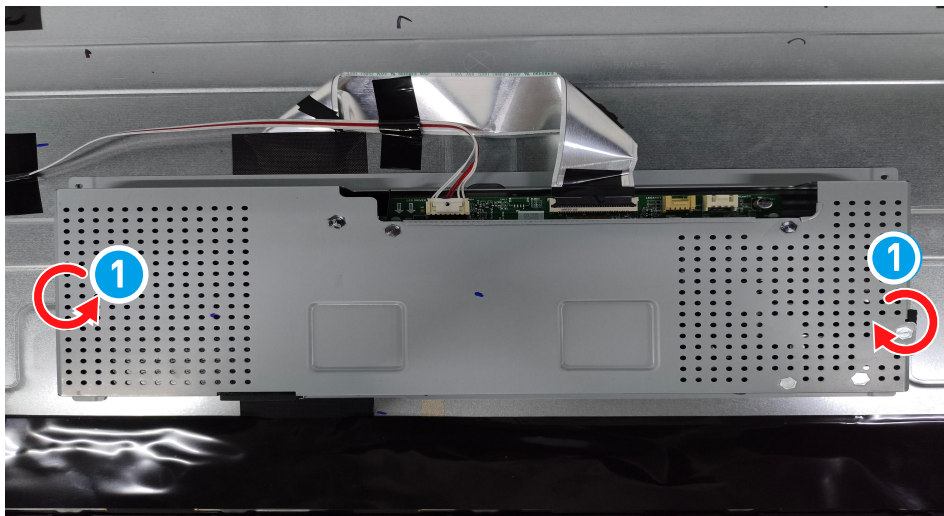


LCD Panel



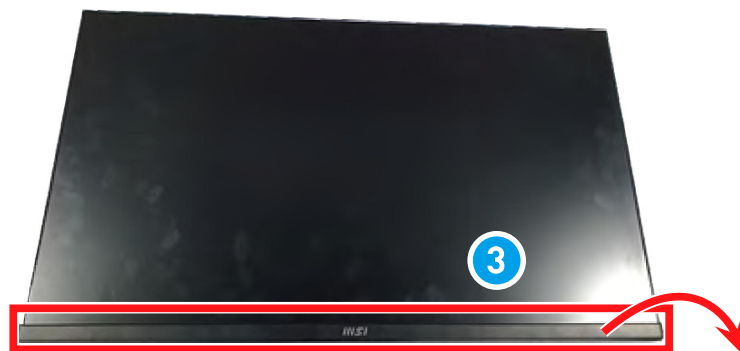
LCD Panel Disassembly

1. Remove shielding cover screws **1** and deco strip screws **2**.

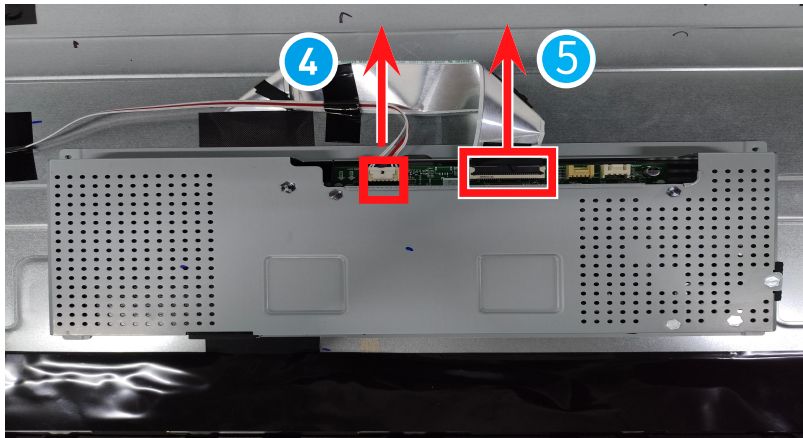


2. Place the monitor in face-down position. Remove screws **2** that secure the deco strip to the LCD bezel with a cross-head screwdriver.

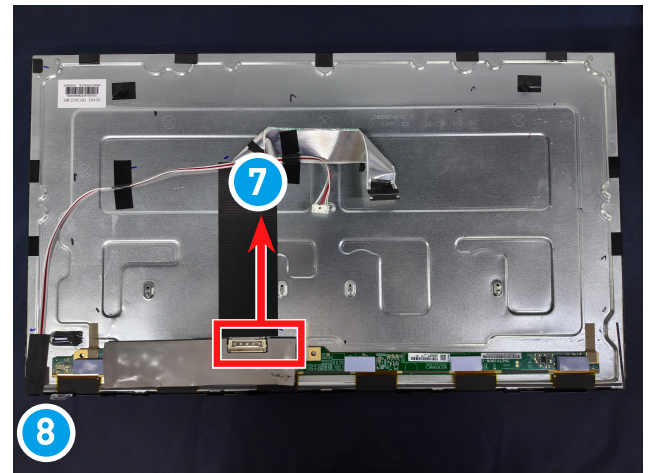
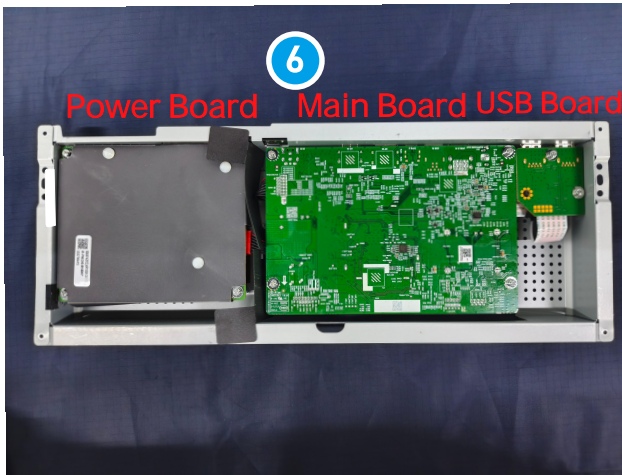
With the monitor face up, Gently pull outwards to remove the deco strip **3** from the LCD bezel.



3. Disconnect the LED cable ④ . And disconnecting the panel signal cable ⑤ .

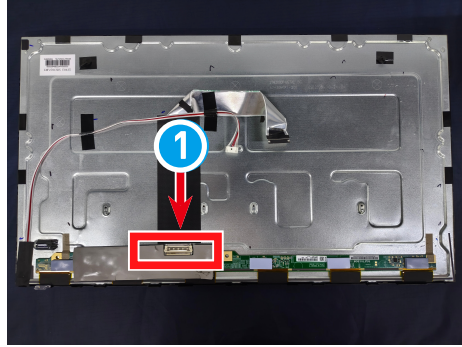


4. Remove the shielding cover ⑥ , panel signal cable ⑦ , LED cable ⑧ ,

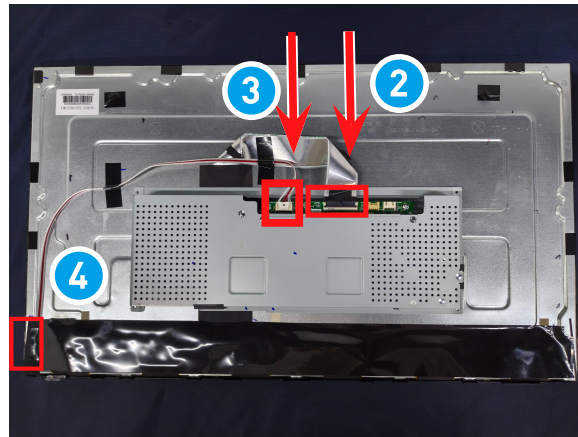


LCD Panel Assembly

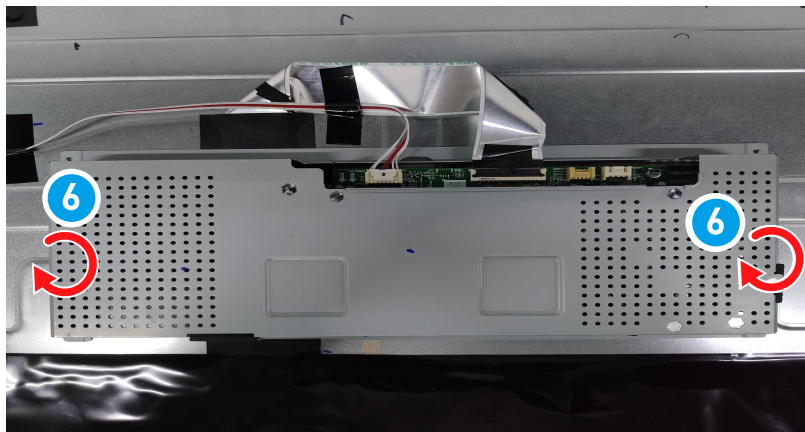
1. connect panel signal cable ①



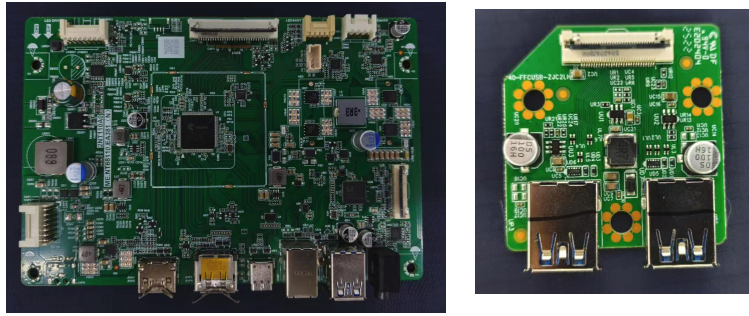
2. Connect the panel signal cable ②, press and hold the cable's release tabs and pull the cable carefully inwards. Connect the LED cable ③ at both ends and ④ remember to wrap the LED cable in the left corner of LCD panel in black tape to prevent light leakage



3. Secure the deco strip screws ⑤, shielding cover screws ⑥ to complete.



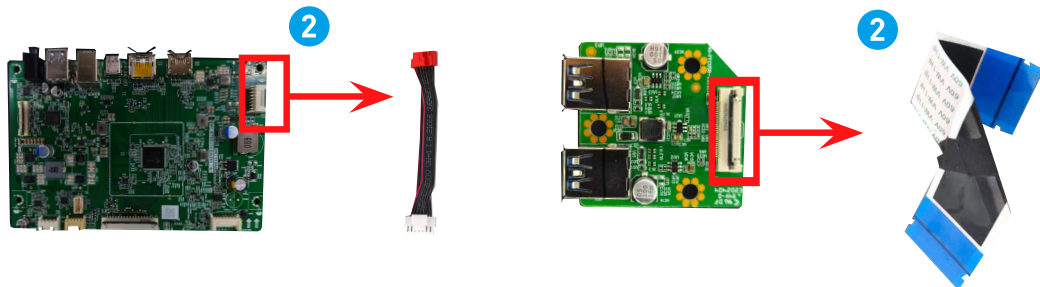
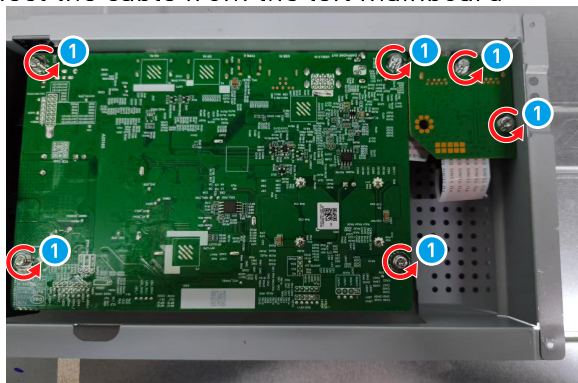
Mainboard&USB HUBboard



Mainboard&USB HUBboard Disassembly

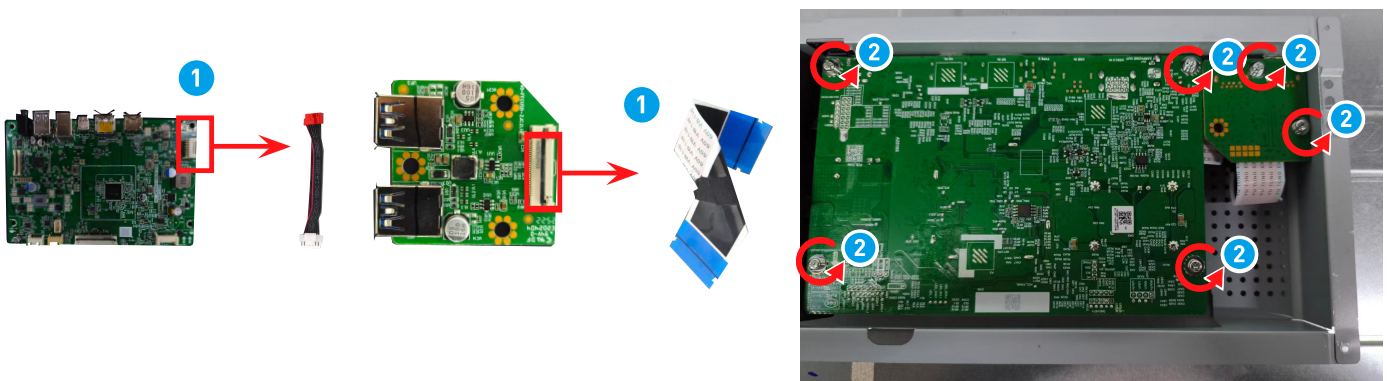
Follow [LCD Panel Disassembly](#) to remove the mainboard.

1. Locate the mainboard and USBboard remove screws. ①
2. Disconnect the cable from the left mainboard and USBboard ② to finish.

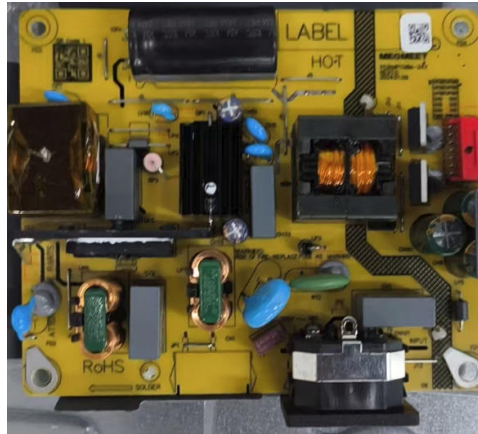


Mainboard&USB HUBboard Assembly

1. Connect the cable from the left mainboard and USBboard ① to finish.
2. Locate the mainboard and USBboard remove screws. ②



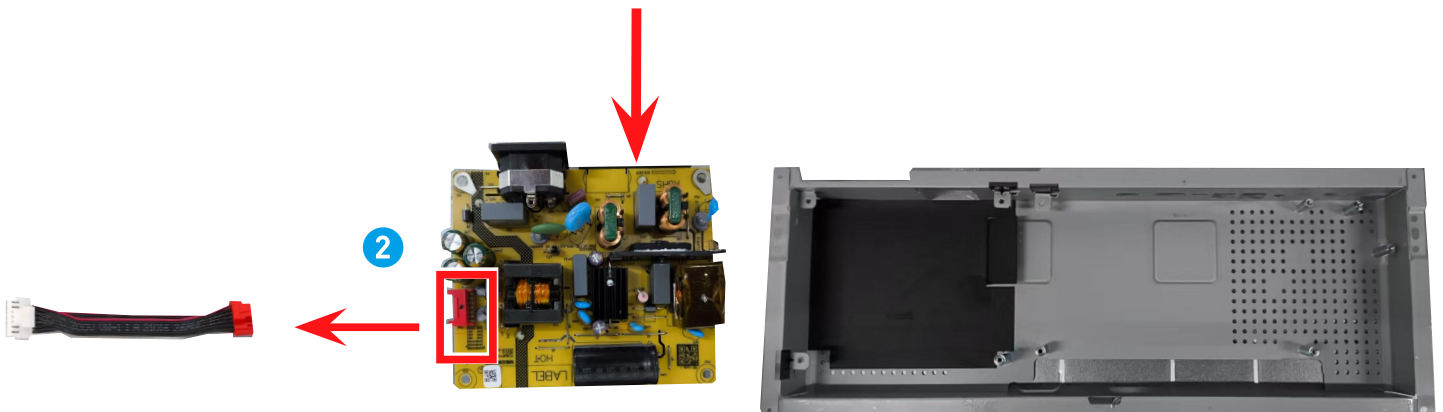
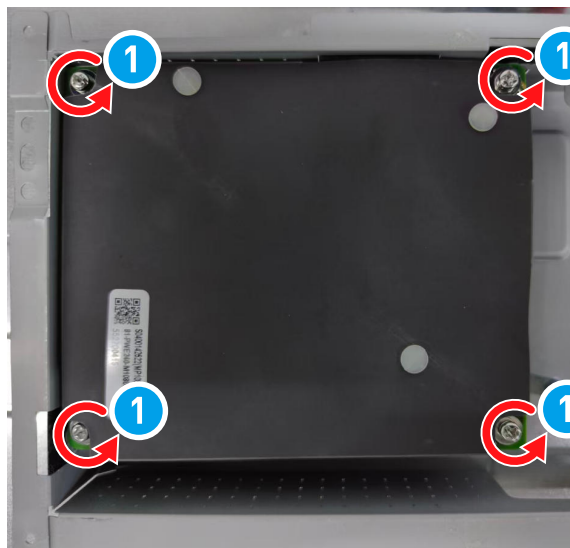
Power Board (Internal Power Supply)



Power Board (Internal Power Supply) Disassembly

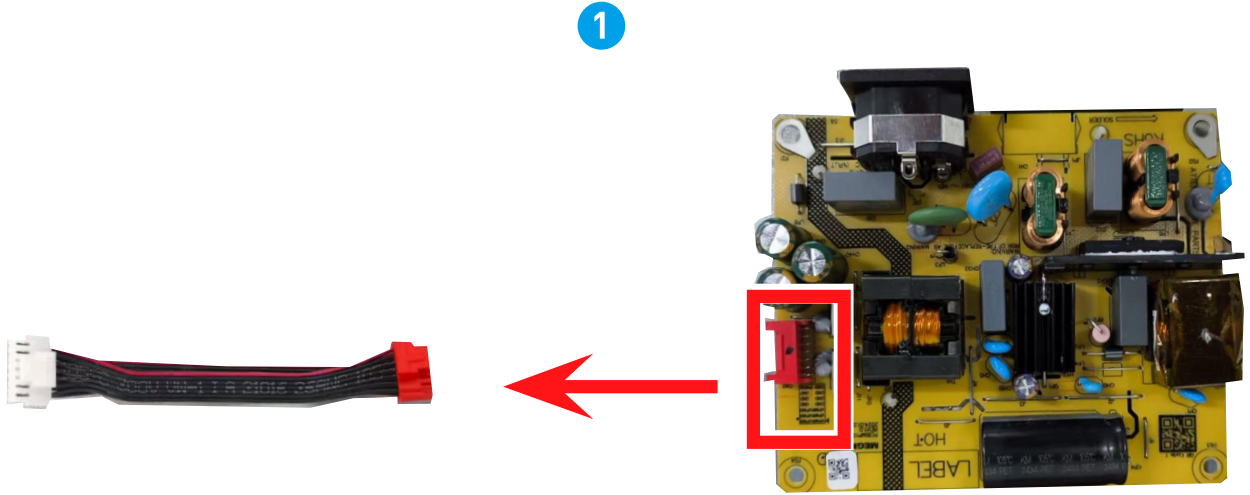
Follow [LCD Panel Disassembly](#) to remove the power board and shielding cover.

1. Unscrew the screws **1** on the power board. Then you will receive the power board and shielding cover
2. Disconnect the cable from the right powerboard **2** to finish.



Power Board (Internal Power Supply) Assembly

1. Connect the cable from the right powerboard **1** to finish.



Troubleshooting

Users may refer to the following tips or visit [MSI Monitor Support](#) for quick and easy troubleshooting when encountering common problems with the product. It is always suggested that users contact the authorized MSI service center for advanced tech support if needed.

The power LED is off.

- Press the monitor power button again.
- Check if the monitor power cord is properly connected.

No image.

- Check if the computer graphics card is properly installed.
- Check if the computer and monitor are connected to electrical outlets and are turned on.
- Check if the monitor signal cable is properly connected.
- The computer may be in Standby mode. Press any key to activate the monitor.

The screen image is not properly sized or centered.

- Refer to Preset Display Modes to set the computer to a setting suitable for the monitor to display.

No Plug & Play.

- Check if the monitor power cord is properly connected.
- Check if the monitor signal cable is properly connected.
- Check if the computer and graphics card are Plug & Play compatible.

The icons, font or screen are fuzzy, blurry or have color problems.

- Avoid using any video extension cables.
- Adjust brightness and contrast.
- Adjust RGB color or tune color temperature.
- Check if the monitor signal cable is properly connected.
- Check for bent pins on the signal cable connector.

The monitor starts flickering or shows waves.

- Change the refresh rate to match the capabilities of your monitor.
- Update your graphics card drivers.
- Keep the monitor away from electrical devices that may cause electromagnetic interference (EMI).

How to change your monitor resolution settings

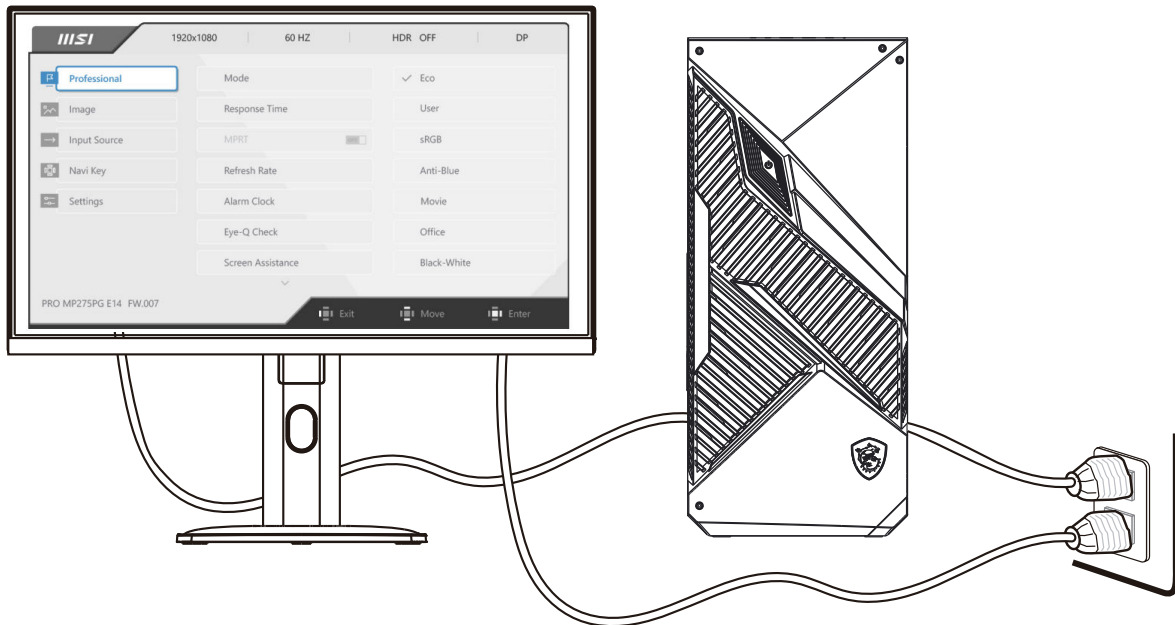
https://www.msi.com/support/technical_details/MNT_Resolution

About monitor response time

https://www.msi.com/support/technical_details/MNT_Perf_Product_Responding_Speed

Powering Up After Maintenance

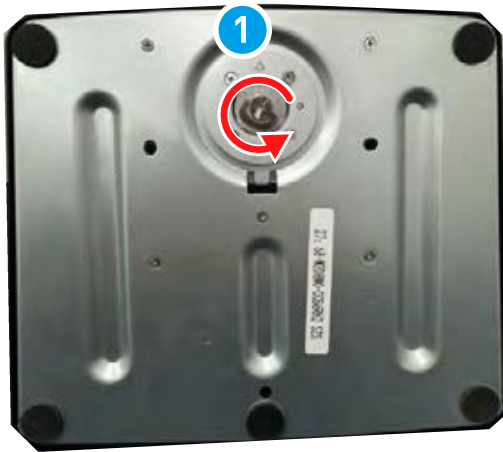
1. Connect the signal cable from the monitor to your PC. Connect the power cord to the monitor power jack and the electrical outlet. Turn on the monitor.
2. Depending on the monitor's signal ports, check the VGA, HDMI, DP ports in sequence. Changing the display to Red, Green, Blue, White and Black screens to check whether an image is abnormal.
3. Press the Menu key and adjust the Brightness or other functions to inspect the screen for abnormalities.
4. Check the Audio and volume control for abnormalities when connecting to various signal ports.
5. Reset the monitor after inspection. Turn off the monitor and disconnect all cables.



Recycling guidelines

Stand base

1. Follow [Stand base Disassembly](#) to remove the adjustable stand from the monitor.
2. By disassembling quick release fasteners ① of the stand base to separate the adjustable stand and the base ② .



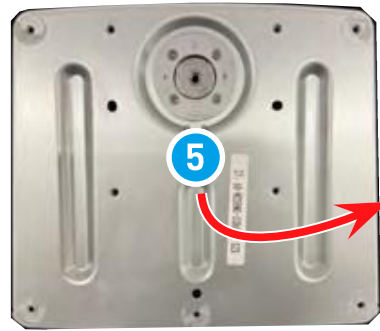
-
3. You'll see the stand and base separated.



4. Reverse the base. Tear off rubber pads **3** and remove screws **4** under with a cross head screwdriver to open the base.

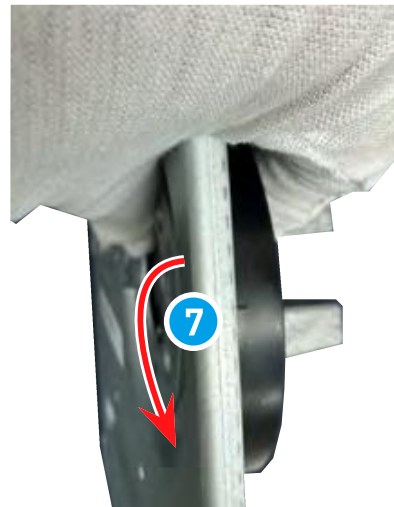


5. Open and take out the steel base plate **5**, the plastic base plate can be recycled by qualified recyclers.



Both plates

6. Unscrew the base **6** and remove all components **7**.

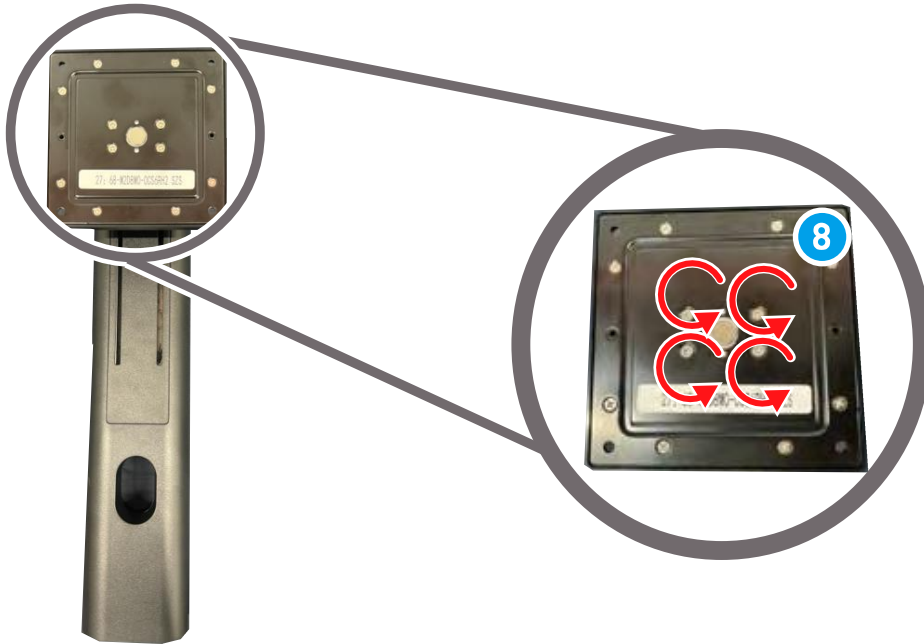


7. Both plates can be recycled by qualified recyclers.



VESA plate

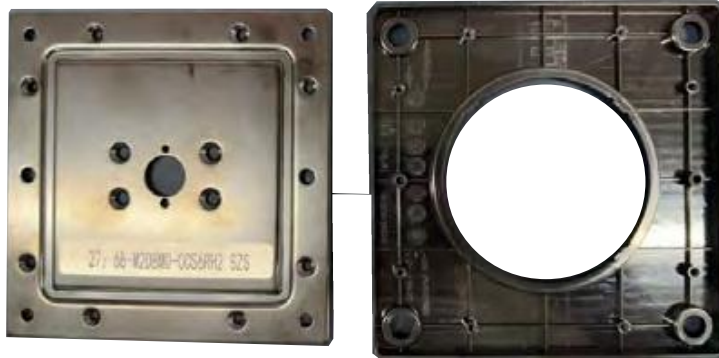
8. Use a cross head screw driver to loose stand screws **8**.



9. Use a pry tool to open up the steel and plastic VESA plate around the edge.

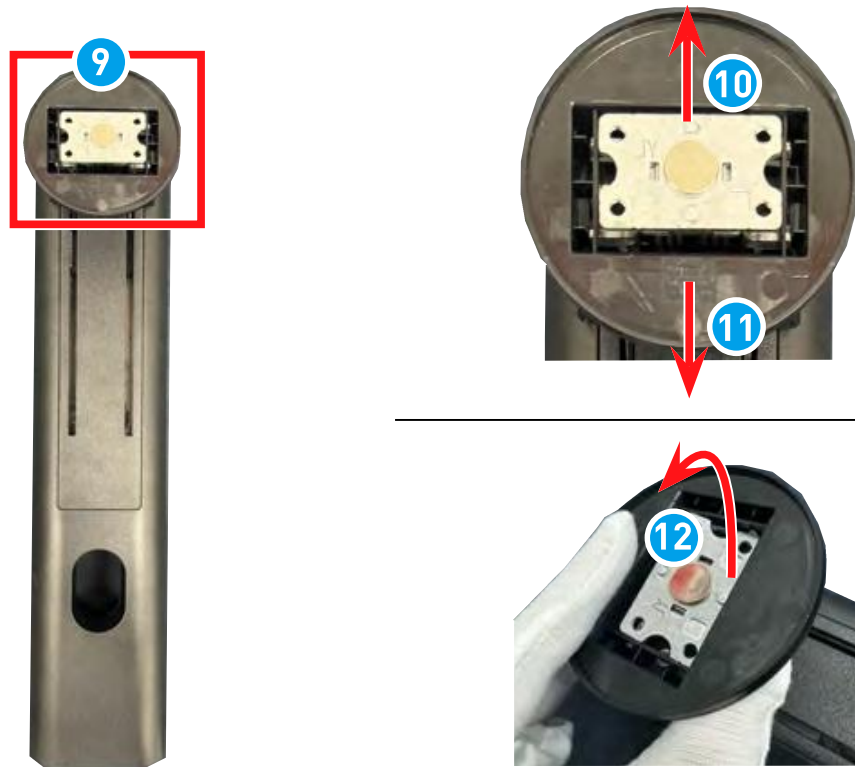


10. The plastic VESA plate can be recycled by qualified recyclers.

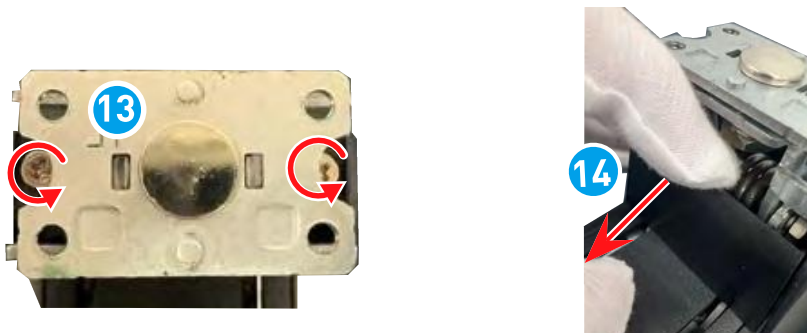


Stand enclosure

11. Take off the circular disc-shaped top 9 in the directions below 10 11 12.



12. Remove screws 13 to take the cap off 14.



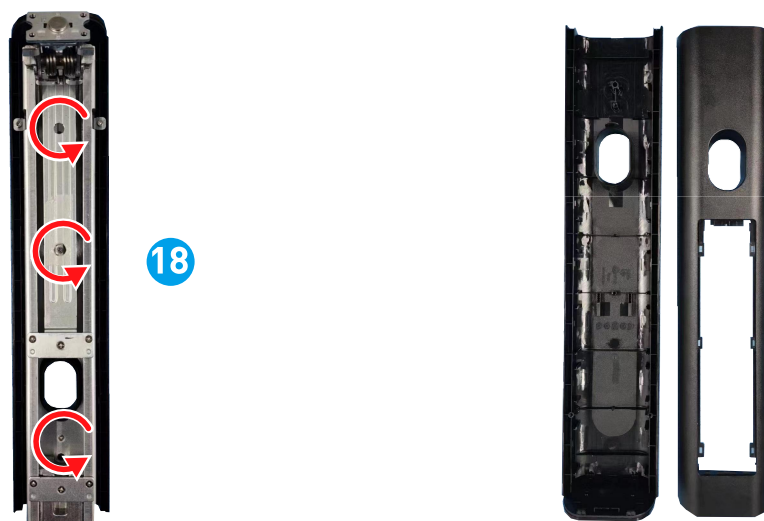
13. Straighten it with pliers **15** and remove the shell **16**.



14. Use a pry tool to carefully pry open the housing of the strut **17**.



15. Unscrew the screws **18** and the removed stand enclosure can be recycled by a qualified recycler.



Rear Cover

Important

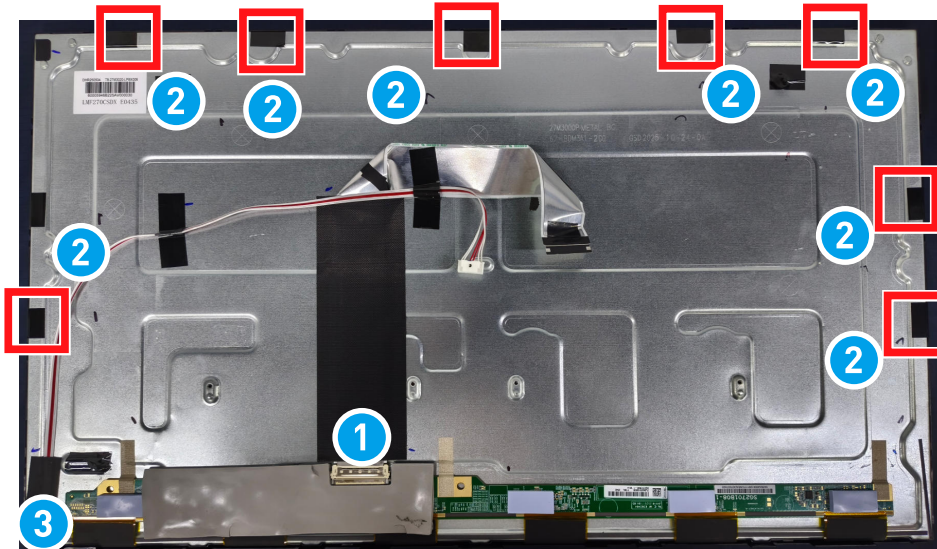
Before recycling the separated plastic parts, please use a cross-head screwdriver or the diagonal pliers to remove all the screw bosses with copper sticks, if any.

1. Follow [Rear Cover Disassembly](#) to remove the rear cover.
2. Follow [Navi Board & Navi Key Disassembly](#) to remove the rear cover.
3. Follow [Speakers Disassembly](#) to remove the rear cover.
4. After disassembling all components, the rear cover can be recycled by qualified recyclers.



Removal of Deco Strip & LCD Bezel

1. Follow [LCD Panel Disassembly](#) to remove the deco strip & LCD bezel.
2. Place the display module in the workbench, remove the FFC cable **1** , and tear off the adhesive tapes **2** , and remove the conductive cloth **3** .



3. Place the monitor in face-down position. Remove deco strip & LCD bezel screws **4** that secure to the LCD panel with a cross-head screwdriver.



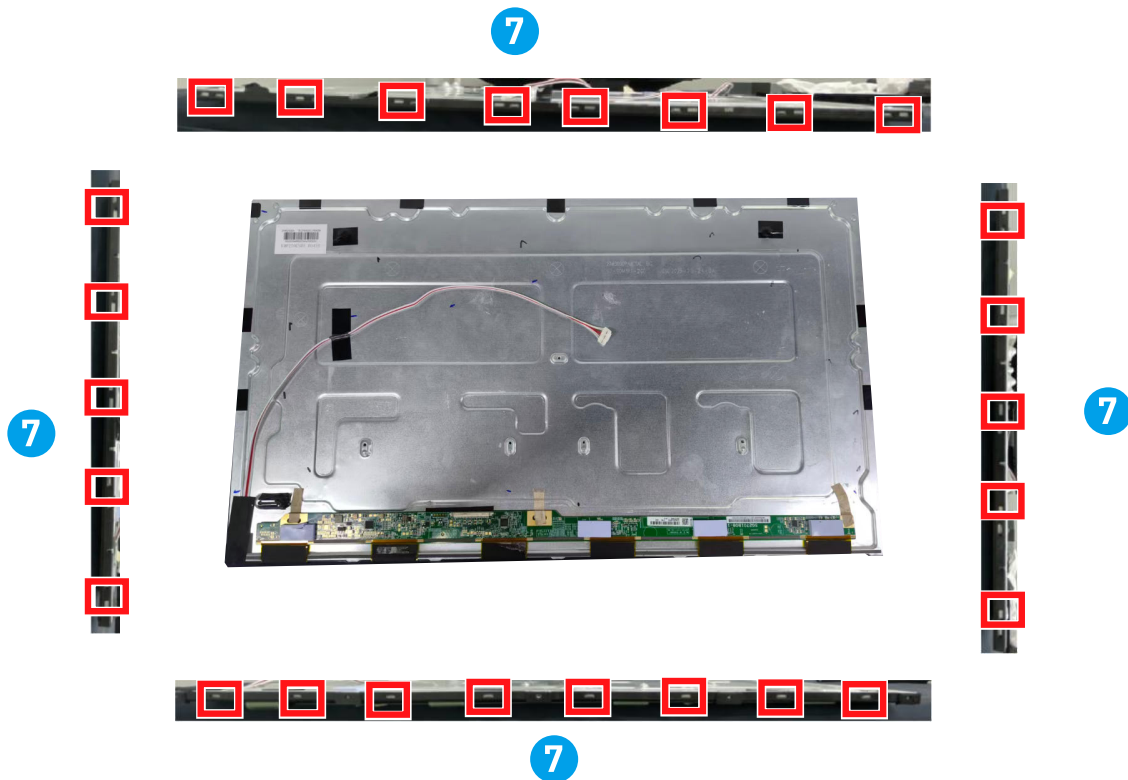
4. With the monitor face up, Gently pull outwards to remove the deco strip **5** from the LCD panel.

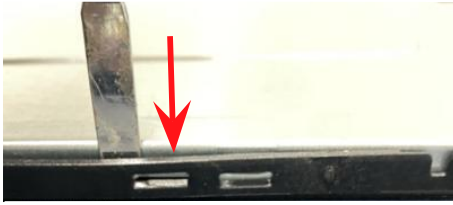


-
5. Take Six wrinkle tape of adhesive paper and stick the source board to the LCD panel **6**

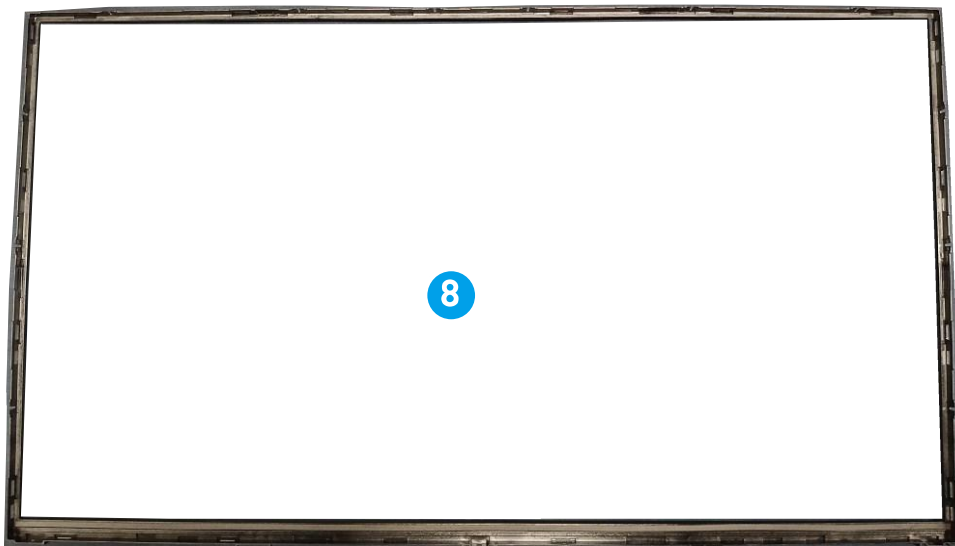


-
6. Use a pry bar to open the LCD bezel **7** and allow the rubber frame to separate from the back plate, which has a total of 26 buckles.





7. The LCD Bezel **8** can be recycled.



 **Important**

- 1.This disassembly must be done in a clean room.
- 2.You must wear an anti-static wrist strap when touching the motherboard and LCD panel.
3. An ion fan must be available to remove static electricity.
- 4.Please take this process gently to avoid LCD panel damage.

Product End-of-Life Instructions



Important

MSI Environmental Information

Information on MSI’s Environmental initiatives, policies, programs and goals can be found at [Environmental Sustainability Policy](#).

Purpose

This information is to provide the guidance to recyclers on the presence of materials and components at the product level, as required by the EU WEEE and amending Directive.

The Product Identify Materials Information

The following substances, preparations, or components should be disposed of or recovered separately from other WEEE in compliance with Article 8 (2), (3) and (4) of EU Council Directive 2012/19/EU. Annex II contains an indicative list of EEE which falls within the categories set out in Annex I. It includes entries requiring disposal or recovery in compliance with the Waste Directive 2008/98/EC and, for listed WEEE components, provides mandatory treatment measures.

For detailed information, please refer to Annex VII of the WEEE Directive on the [ECHA website](#).

Identify materials for materials and components of the waste electrical and electronic equipment list.

*1: The following item numbers correspond with those in [Product Components and Accessories](#).

| Materials | Item*1 | Location |
|---|-------------------|------------------------------------|
| Polychlorinated biphenyl [PCB] containing capacitors and all polychlorinated biphenyls and polychlorinated terphenyls [PCB/PCT] containing electrical equipment | — | Absent |
| Mercury containing components, such as switches or backlighting lamps | — | Absent |
| Batteries | — | Absent |
| Printed circuit boards of mobile phones generally, and of other devices if the surface of the printed circuit board is greater than 10 square centimeters | 2 | LCD Panel(Control Board) |
| | 4 | Navi Board |
| | 7 | Power Board(Internal Power Supply) |
| | 6 | Mainboard |
| Toner cartridges, liquid and paste, as well as color toner | — | Absent |
| Plastic containing abominated flame retardants | — | Absent |

| Materials | Item ^{*1} | Location |
|---|--------------------|---|
| Asbestos waste and components which contains asbestos | — | Absent |
| Cathode ray tubes | — | Absent |
| Chlorofluorocarbons [CFC], Hydrochlorofluorocarbons [HCFC] or Hydrofluorocarbons [HFC], Hydrocarbons [HC] | — | Absent |
| Equipment containing gases that are ozone depleting or have a global warming potential (GWP) above 15 | — | Absent |
| Gas discharge lamps | — | Absent |
| Liquid crystal displays [together with their casing where appropriate] of a surface greater than 100 square centimeters and all those back-lighted with gas discharge lamps | 2 | LCD Panel |
| External electric cables | 10 | Signal cable (HDMI™) (External electric cables) |
| | 11 | Power Cord |
| Components containing refractory ceramic fibers | — | Absent |
| Components containing radioactive substances, or materials that become radioactive | — | Absent |
| Electrolytic capacitors containing substances of concern [height > 25 mm, diameter > 25 mm or proportionately similar volume] | 7 | Power Board (Internal Power Supply) |
| Beryllium and its compounds [including Beryllium Oxide] | — | Absent |
| Liquids | — | Absent |

Product Take-Back Service

Waste electrical equipment may contain hazardous substances and thus endanger human health & the environment. Proper disposal is therefore required. MSI provides free recycling of EPEAT-registered and TCO certified products to ensure that the product reaches the end of its useful life and that it is recycled responsibly.

To properly recycle your equipment through this service, please follow the steps:

1. Please delete your personal data from your waste equipment.
2. [CLICK HERE](#) to learn how to recycle your end-of-life product.
3. Find the MSI recycling location nearby on the website.
4. Contact the designated recycling location by phone or email to schedule your pickup. The customers are responsible for any shipping and delivery charges.

OSD Setup

OSD Setup

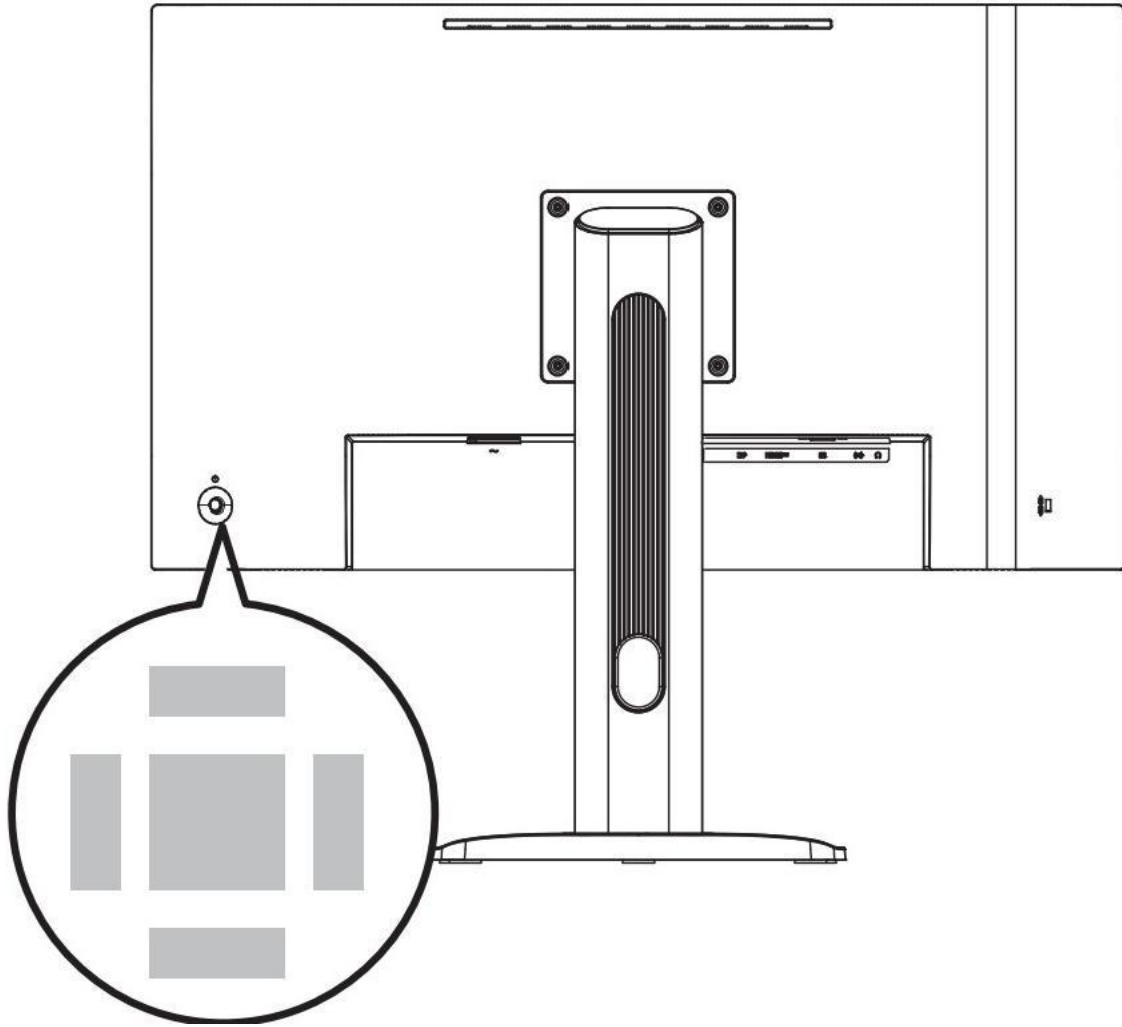
This chapter provides you with essential information on OSD Setup.



All information is subject to change without prior notice.

Navi Key

The monitor comes with a Navi Key, a multi-directional control that helps navigate the On-Screen Display (OSD) menu.



Up/Down/Left/Right:

- selecting function menus and items
- adjusting function values
- entering into/exiting from function menus

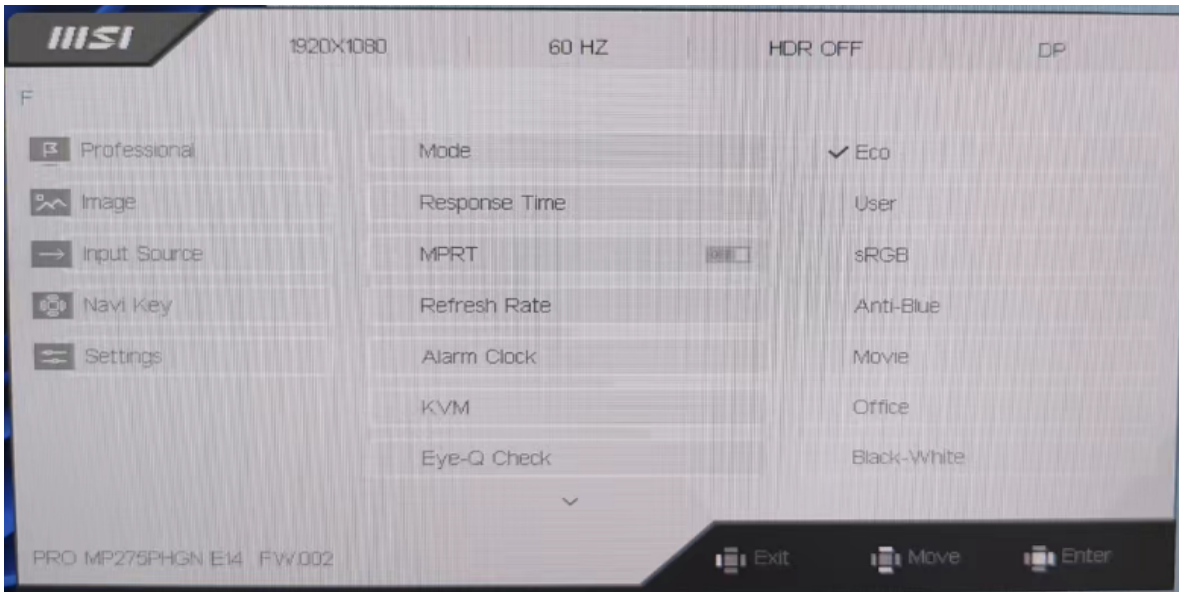
Press(OK):

- launching the On-Screen Display(OSD)
- entering submenus
- confirming a selection or setting

Hot Key

- Users may enter into preset function menus by moving the Navi Key up,down,left or right when the OSD menu is inactive.
- Users may customize their own Hot Keys to enter into different function menus.

OSD Menus



Image

| 1st Level Menu | 2nd/3rd Level Menu | Description | | | | | | |
|-------------------|--------------------|--|-------------------|-----------------|--------------|------------------|--------|------------|
| Brightness | 0-100 | <ul style="list-style-type: none"> Properly adjust Brightness according to the surrounding lighting. | | | | | | |
| Contrast | 0-100 | <ul style="list-style-type: none"> Properly adjust Contrast to relax your eyes. | | | | | | |
| Sharpness | 0-5 | <ul style="list-style-type: none"> Sharpness improves clarity and details of images. | | | | | | |
| Image Enhancement | OFF | <ul style="list-style-type: none"> Image Enhancement enhances image edges to improve their acutance. | | | | | | |
| | Weak | | | | | | | |
| | Medium | | | | | | | |
| | Strong | | | | | | | |
| | Strongest | | | | | | | |
| Low Blue Light | OFF | <ul style="list-style-type: none"> Low Blue Light protects your eyes against blue light. When enabled, Low Blue Light adjusts the screen color temperature to a more yellow glow. When Mode is set to Anti-Blue, it is mandatory to enable Low Blue Light. | | | | | | |
| | ON | | | | | | | |
| HDCR | OFF | <ul style="list-style-type: none"> HDCR enhances image quality by increasing the contrast of images. Activating HDCR will affect: <table border="1" style="width: 100%; border-collapse: collapse;"> <thead> <tr> <th style="width: 50%;">Affected Function</th> <th style="width: 50%;">Function Status</th> </tr> </thead> <tbody> <tr> <td>» Brightness</td> <td>Unable to select</td> </tr> <tr> <td>» MPRT</td> <td>Set to OFF</td> </tr> </tbody> </table> | Affected Function | Function Status | » Brightness | Unable to select | » MPRT | Set to OFF |
| | Affected Function | | Function Status | | | | | |
| | » Brightness | | Unable to select | | | | | |
| | » MPRT | | Set to OFF | | | | | |
| ON | | | | | | | | |
| | | | | | | | | |
| | | | | | | | | |

| 1st Level Menu | 2nd/3rd Level Menu | Description |
|-------------------|--------------------|--|
| Color Temperature | Cool | <ul style="list-style-type: none"> • Use Up or Down Button to select and preview mode effects. • Press the Middle Button to confirm and apply your mode type. • Users can adjust Color Temperature in Customization mode. |
| | Normal | |
| | Warm | |
| | Customization | |
| | | G (0-100) |
| | | B (0-100) |
| Auto Config | | <ul style="list-style-type: none"> • For D-Sub only, this setting will be grayed out when detecting other input sources. |
| Clock | 0-100 | <ul style="list-style-type: none"> • Adjust Clock setting. • For D-Sub only, this setting will be grayed out when detecting other input sources. |
| Phase | 0-100 | <ul style="list-style-type: none"> • Adjust Phase setting. • For D-Sub only, this setting will be grayed out when detecting other input sources. |
| H. Position | 0-100 | <ul style="list-style-type: none"> • Adjust H. Position setting. • For D-Sub only, this setting will be grayed out when detecting other input sources. |
| V. Position | 0-100 | <ul style="list-style-type: none"> • Adjust V. Position setting. • For D-Sub only, this setting will be grayed out when detecting other input sources. |

Input Source

| 1st Level Menu | 2nd Level Menu | Description |
|----------------|----------------|--|
| HDMI TM | | <ul style="list-style-type: none"> • Users can adjust Input Source in any mode. |
| DP | | |
| D-Sub | | |
| Auto Scan | OFF | <ul style="list-style-type: none"> • Users can use the Navi Key to select Input Source at below status: • While "Auto Scan" is set to "OFF" with the monitor at power saving mode; • While "No Signal" message box is shown on the monitor. |
| | ON | |

Navi Key

| 1st Level Menu | 2nd Level Menu | Description |
|-----------------------------|-----------------|---|
| Up Down Left Right | OFF | <ul style="list-style-type: none"> All Navi Key items can be adjusted via OSD Menus. |
| | Brightness | |
| | Mode | |
| | Alarm Clock | |
| | Input Source | |
| | Refresh Rate | |
| | Info. On Screen | |
| | Audio Volume | |

Settings

| 1st Level Menu | 2nd Level Menu | Description |
|------------------------------|------------------|---|
| Language | 繁體中文 | <ul style="list-style-type: none"> Users have to press the Middle Button to confirm and apply the Language setting. Language is an independent setting. Users' own language setting will override the factory. When users set Reset to Yes, Language will not be changed. |
| | English | |
| | Francais | |
| | Deutsch | |
| | Italiano | |
| | Espanol | |
| | 叶 | |
| | 日本語 | |
| | Русккн | |
| | Portugues | |
| | 简体中文 | |
| | Bahasa Indonesia | |
| | Türkce | |
| (More languages coming soon) | | |
| Transparency | 0~5 | <ul style="list-style-type: none"> Users can adjust Transparency in any mode. |
| OSD Time Out | 5~30s | <ul style="list-style-type: none"> Users can adjust OSD Time Out in any mode. |
| Power Button | OFF | <ul style="list-style-type: none"> When set to OFF, users can press the power button to turn off the monitor. |
| | Standby | <ul style="list-style-type: none"> When set to Standby, users can press the power button to turn off the panel and backlight. |

| 1st Level Menu | 2nd Level Menu | Description | | | | |
|----------------|-------------------|---|-------------------|-----------------|---------------|------------|
| Info.On Screen | OFF | <ul style="list-style-type: none"> The information of the monitor status will be shown on the right side of the screen. Activating Info.On Screen will affect: <table border="1" data-bbox="805 403 1332 492"> <thead> <tr> <th>Affected Function</th> <th>Function Status</th> </tr> </thead> <tbody> <tr> <td>» Eye-Q Check</td> <td>Set to OFF</td> </tr> </tbody> </table> | Affected Function | Function Status | » Eye-Q Check | Set to OFF |
| | Affected Function | | Function Status | | | |
| » Eye-Q Check | Set to OFF | | | | | |
| ON | | | | | | |
| Audio Volume | 0-100 | <ul style="list-style-type: none"> Users can adjust Audio Volume in any mode. | | | | |
| Reset | YES | <ul style="list-style-type: none"> Users can Reset and restore settings to original OSD Default in any mode. | | | | |
| | NO | | | | | |