

Q:

ATI graphic does not do 1920x1080 full screen on HDMI.

It displays black bars (both horizontally and vertically). See attached pictures.



A:

ATI driver default may vary from VGA cards.

But it provides a "Scaling option" to adjust the screen size.

Whenever you connect HDTV or other HDMI equipment for display;

Please go to ATI catalyst control panel -> Desktop & Displays -> Scaling options to find the "Scaling options";

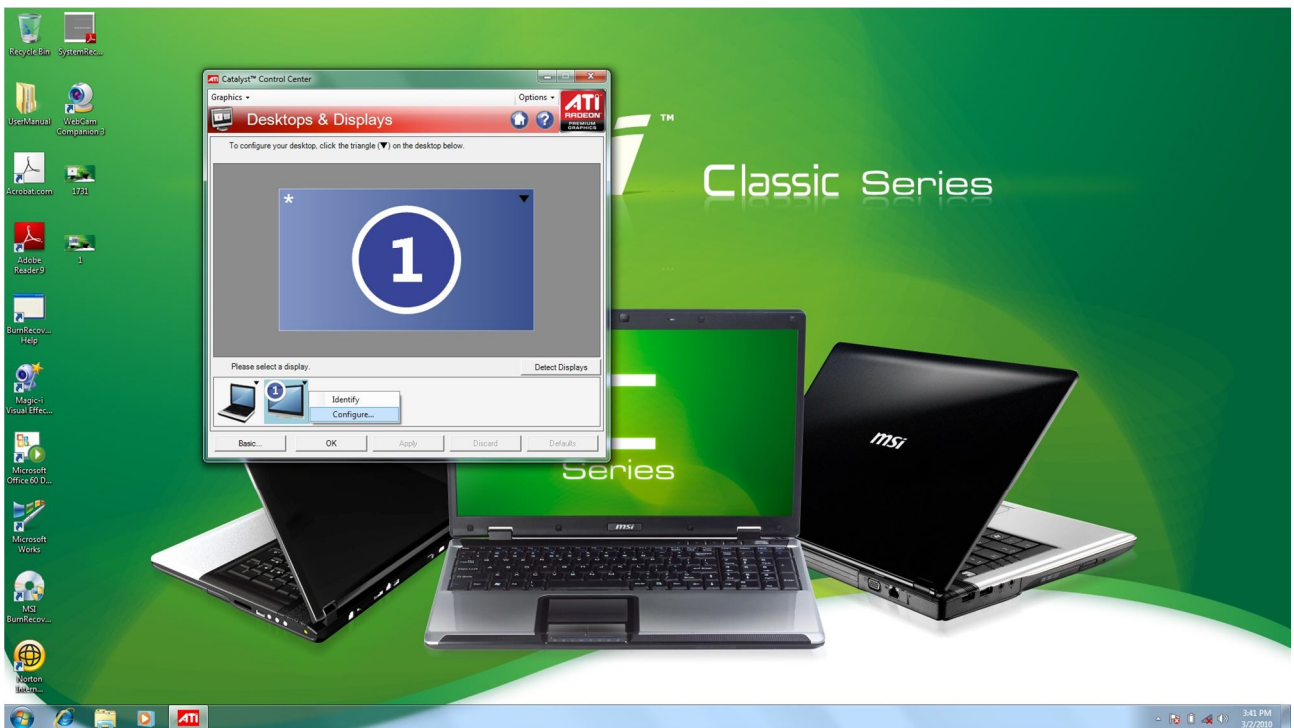
As below pictures display procedure to do;

1. Throughout HDMI port to connect extend device with UUT;
2. Right click desktop properties, and select ATI catalyst;

3. In control center to select Desktops & Displays;



4. Right click TV icon to select config. icon;



5. Enter into select scaling options;

