

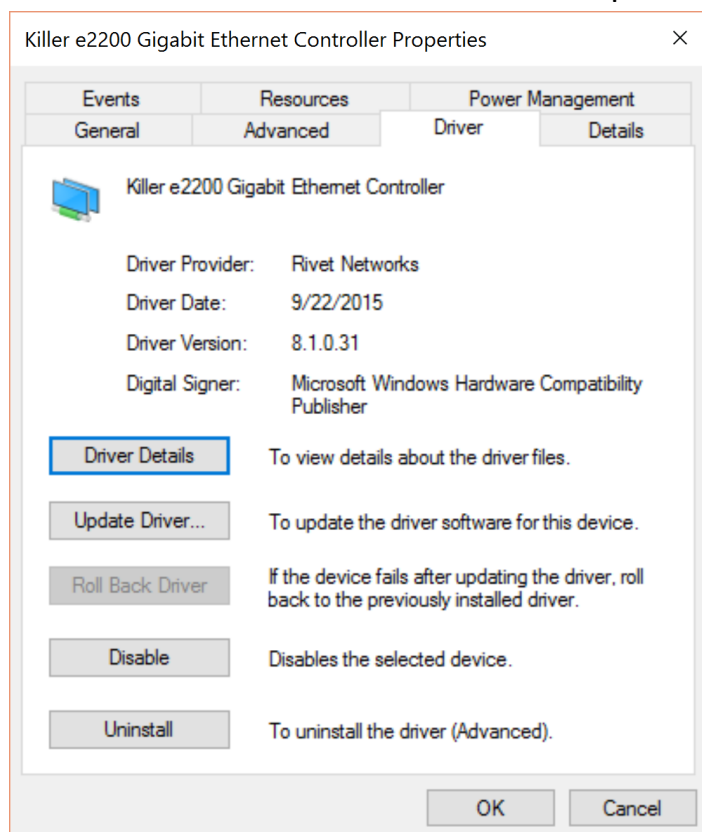
FAQ No. 02175**Killer LAN disconnect after Windows 10 updates driver patch**

Affected model: Killer LAN model

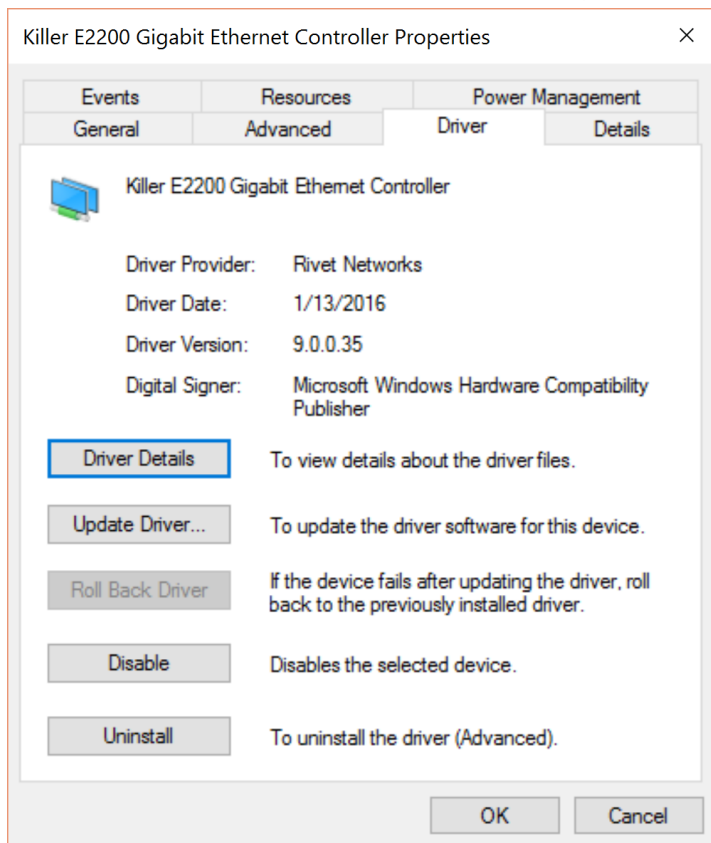
Q: Why does Killer LAN disconnect after Windows 10 regular updates drivers, and an exclamation mark appears on the network icon.



A: This problem might happen if the Killer LAN driver is older than version 8.1.0.31 and updated by Windows 10 to version 9.0.0.35.

Killer LAN version before Windows 10 update

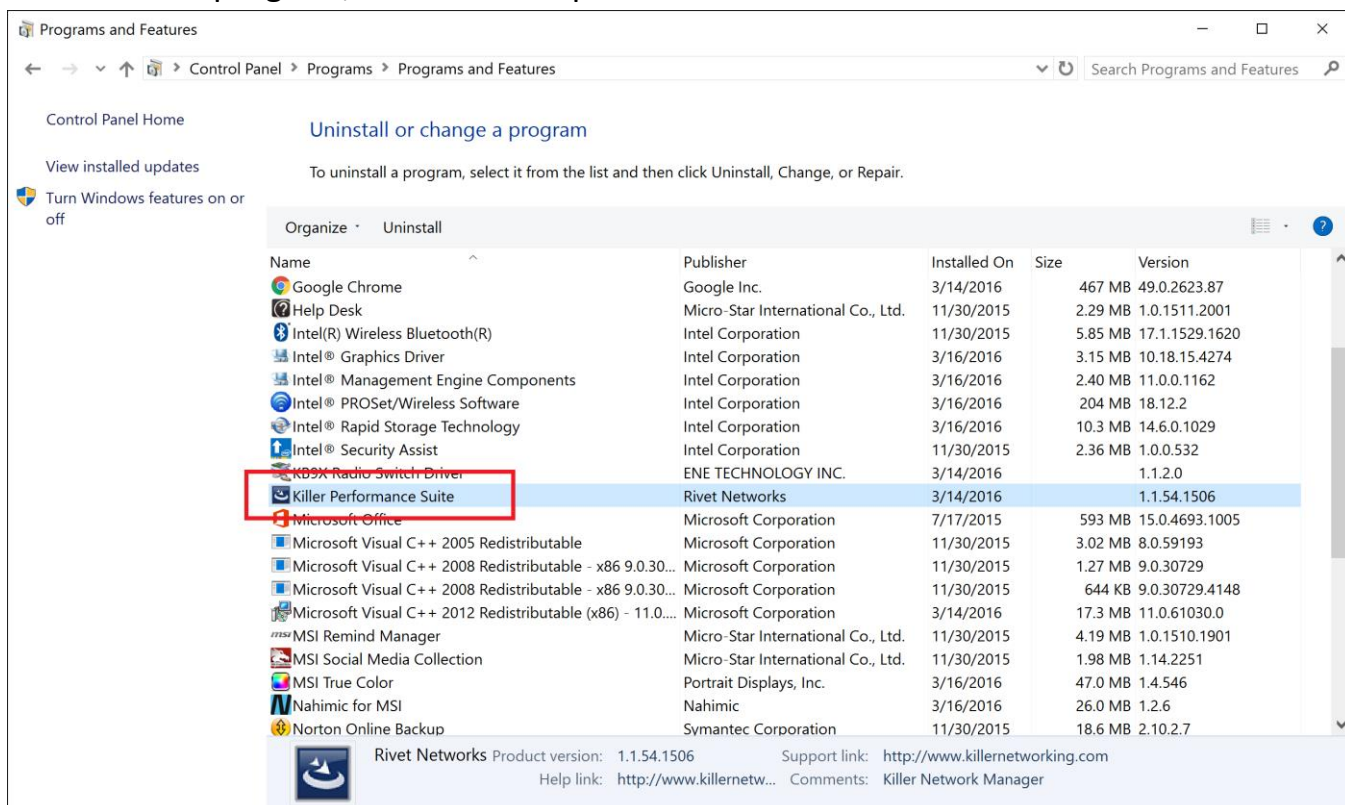
Killer LAN version after Windows 10 update



There are two solutions:

1. The first solution is easier.

Please uninstall Killer LAN performance suite and driver from Windows control panel. Right click on Windows "Start" logo, click on "Control Panel" => Programs => Uninstall a program, remove Killer performance suite.



Restart system after uninstall Killer Performance Suite.

Then download and install the latest WLAN/LAN driver from Killer website:

<http://www.killernetworking.com/support/driver-downloads>

2. Or after you uninstall Killer Performance Suite, you can install the LAN version on MSI global website on your Notebook model download page: www.msi.com

And then disable Windows 10 auto update by the actions of this FAQ:

[How to Hide or Show Windows Updates?](#)

If none of these two actions can solve the LAN problem, please contact local service center for further help.