

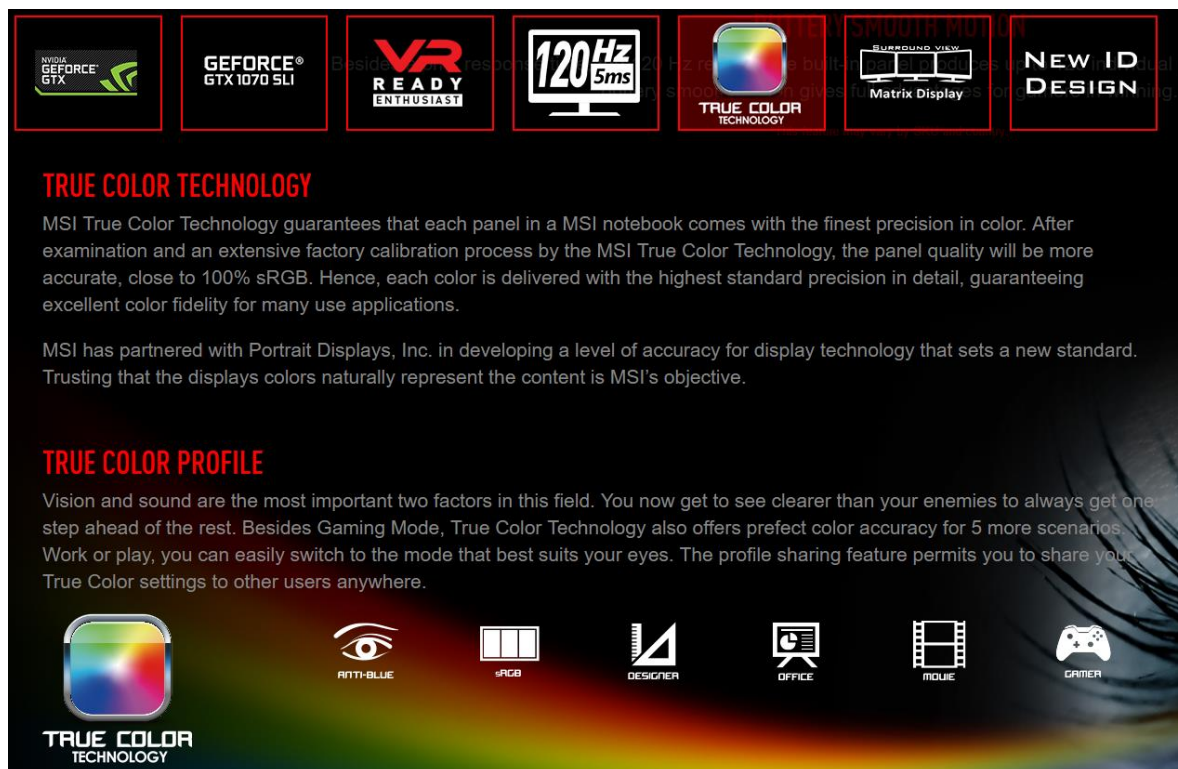
[How to] How to Adjust Basic & Advanced View Modes in MSI True Color

This guide only applies to True Color supported series.

How to Identify True Color Notebook?

Please check the specification under the Overview page of your Notebook: <https://www.msi.com/Laptops>

If it is True Color supported, you can find True Color feature introduction under your Notebook Overview page; if no such introduction exists, then the Notebook is none True Color series.



The graphic features a row of seven icons at the top: NVIDIA GeForce GTX, GeForce GTX 1070 SLI, VR Ready Enthusiast, 120Hz 5ms, True Color Technology, Surround View Matrix Display, and NewID Design. Below these, the text reads: **TRUE COLOR TECHNOLOGY**
MSI True Color Technology guarantees that each panel in a MSI notebook comes with the finest precision in color. After examination and an extensive factory calibration process by the MSI True Color Technology, the panel quality will be more accurate, close to 100% sRGB. Hence, each color is delivered with the highest standard precision in detail, guaranteeing excellent color fidelity for many use applications.
MSI has partnered with Portrait Displays, Inc. in developing a level of accuracy for display technology that sets a new standard. Trusting that the displays colors naturally represent the content is MSI's objective.

TRUE COLOR PROFILE
Vision and sound are the most important two factors in this field. You now get to see clearer than your enemies to always get one step ahead of the rest. Besides Gaming Mode, True Color Technology also offers perfect color accuracy for 5 more scenarios. Work or play, you can easily switch to the mode that best suits your eyes. The profile sharing feature permits you to share your True Color settings to other users anywhere.

At the bottom, there is a row of icons representing different usage scenarios: True Color Technology (color wheel), Anti-Blue (eye), sRGB (color bars), Designer (ruler), Office (calendar), Movie (film strip), and Gamer (game controller).

If you want to know True Color version update and bug patch history, please refer to:

[\[Release Notes\] True Color](#)

For other issues, please refer to:

[\[Troubleshooting\] True Color Troubleshooting Guide](#)

How to Adjust Basic & Advanced View Modes

There are basic mode and advanced View Modes in True Color. Basic View Mode provides quick access to six View Modes. Advanced View Mode allows users to customize the user defined settings and give access to True Color's tools. Click on the triangle at the bottom of the application can switch between basic and advanced View Modes in True Color.

Basic View Mode



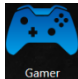






Advanced View Mode






About View Modes

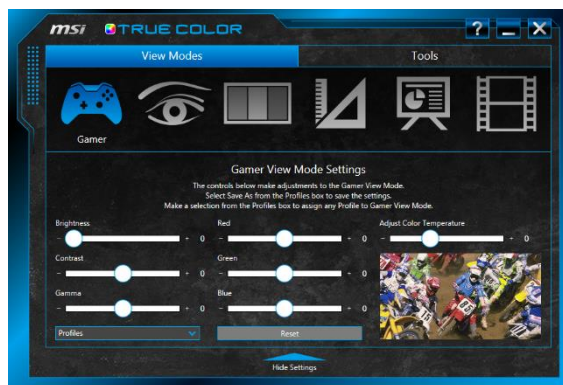
The following View Modes are supported: Gamer, Anti-Blue, sRGB, Designer (model dependent), Adobe RGB (model dependent), Office and Movie.


	For playing games.
	For reduce the amount of blue light that is emitted from the display to reduce eye fatigue.
	For accurate color when viewing images on the web.
	For designer applications. (model dependent)
	For accurate color when viewing images and other media created in the Adobe RGB color space. (model dependent)
	For office and productivity applications.
	For watching movies.

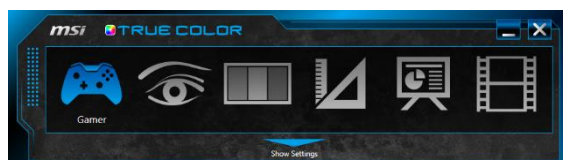
Hot Keys (for select models only)

True Color supports hot keys to launch the application or a control strip with access to View Modes.

[Fn] + [Z] : Press and hold the [Fn] key, and then press the [Z] key to launch the True Color application. Or you can use True Color quick launch button  to launch it.



[Fn] + [A] : Press and hold the [Fn] key, and then press the [A] key to launch the mini View Mode application for quick access to View Modes. Or you can use True Color quick launch button  to launch it.



Note: This True Color quick launch button is for select models only.

Gamer

Gamer View Mode customizes to best suit the user's game preferences. Gamer View Mode Settings can be saved, exported, or imported to share with other users. Any adjustments will be automatically saved to Gamer View Mode.



Gamer View Mode Settings

Use the respective slider to adjust their brightness, contrast, gamma, Red, Green and Blue value.

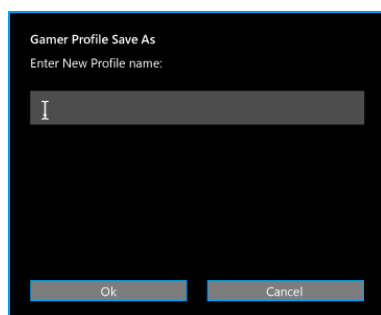
Reset

Press this key can reset the value of brightness, contrast, gamma, Red, Green and Blue to the default settings.

Profiles

There are 5 options in Gamer profile drop down menu:

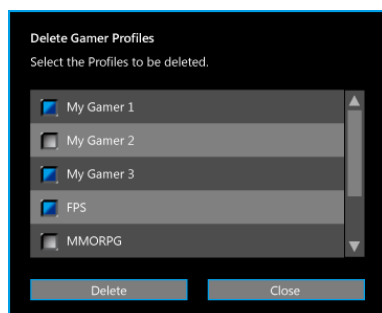
1. Save As: Save the current display adjustments and this setting can be applied to the display at any time.



2. Export: Select this option to choose which profile to export.



3. Import: Select this option will open the “Open” dialog which provides a left list of file names to import. Once imported, the profile name will appear in the drop down menu.
4. Delete: Delete the profile from the drop down menu.



5. Cancel: Close the dialog box.

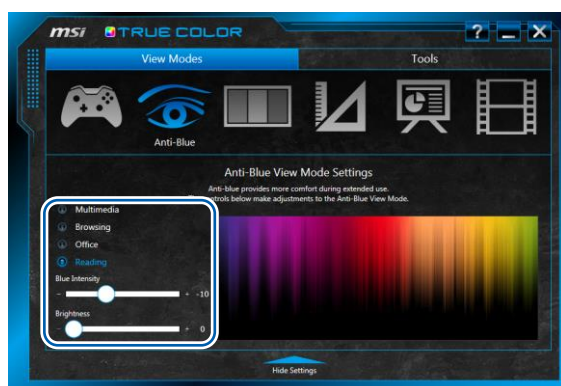
Note: User created profiles are only visible in the View Mode where they were created. Gamer profiles are only visible in the Gamer profile drop down menu. Designer profiles are only visible in the Designer profile drop down menu.

Adjust Color Temperature

Fine tunes the color temperature of the display.

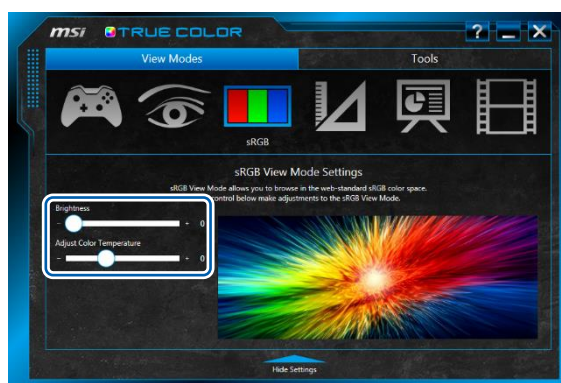
Anti-Blue

Anti-Blue View Mode reduces the amount of blue light that is emitted from the display and provides more comfort during extended use. Select any of the Anti-Blue View Modes setting will be automatically saved to Anti-Blue. It allows the user to adjust the blue intensity and brightness value in multimedia, browsing, Office or reading mode.



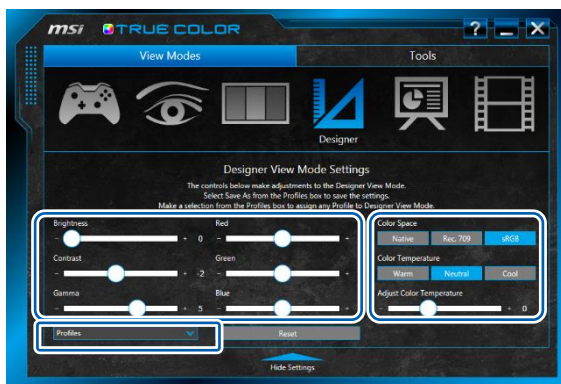
sRGB

sRGB View Mode accurate color when view images on the web. It allows the user to adjust the brightness value in sRGB settings, any change will be automatically saved to sRGB View Mode.



Designer (optional, the supported panel may vary from different model)

Designer View Mode customizes to best suit the user's design applications. Designer View Modes can be saved, exported, or imported to share with other users. Any adjustments will be automatically saved to Designer View Mode.



Designer View Mode Settings

Model Settings

Use the respective slider to adjust their brightness, contrast, gamma, Red, Green and Blue value.

Reset

Press this key can reset the value of brightness, contrast, gamma, Red, Green and Blue to the default settings.

Profiles

There are four options in Designer profile drop down menu:

1. Save As: Save the current display adjustments and this setting can be applied to the display at any time.
2. Import: Select this option will open the "Open" dialog which provides a left list of file names to import. Once imported, the profile name will appear in the drop down menu.
3. Export: Select this option to choose which profile to export.
4. Delete: Delete the profile from the drop down menu.

Color Space

Select the color space of the display from Native, Rec.709 and sRGB.

Color Temperature

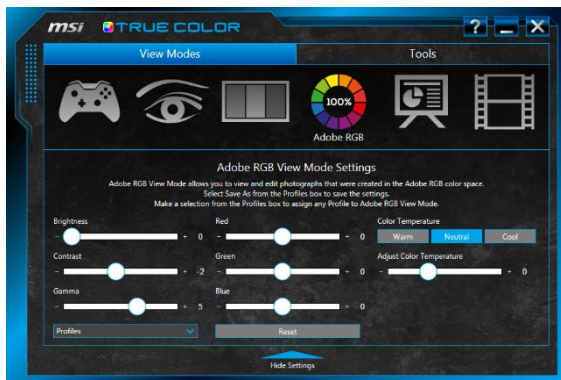
Select the display's white point from Warm, Neutral and Cool.

Adjust Color Temperature

Fine tunes the color temperature of the display.

Adobe RGB (optional, the supported panel may vary from different model)

Adobe RGB View Mode accurate color when viewing images and other media created in the Adobe RGB color space. Adobe RGB View Mode can be saved, exported, or imported to share with other users. Any adjustments will be automatically saved to Adobe RGB View Mode.



Adobe RGB View Mode Settings

Model Settings

Use the respective slider to adjust their brightness, contrast, gamma, Red, Green and Blue value.

Reset

Press this key can reset the value of brightness, contrast, gamma, Red, Green and Blue to the default settings.

Profiles

There are four options in Adobe RGB profile drop down menu:

1. Save As: Save the current display adjustments and this setting can be applied to the display at any time.
2. Import: Select this option will open the “Open” dialog which provides a left list of file names to import. Once imported, the profile name will appear in the drop down menu.
3. Export: Select this option to choose which profile to export.
4. Delete: Delete the profile from the drop down menu.

Color Temperature

Select the display's white point from Warm, Neutral and Cool.

Adjust Color Temperature

Fine tunes the color temperature of the display.

Office

Office View Mode is designed for productivity applications commonly used in the workplace.

It allows the user to adjust the brightness value in Office settings, any change will be automatically saved to Office View Mode.



Movie

Office View Mode can enhance your movie viewing experience. It allows the user to adjust the brightness value in Movie settings, any change will be automatically saved to Movie View Mode.

