

[How to] Setup Nvidia Surround View

Apply to Surround View supported notebooks only.

Find out whether your notebook has Surround View support or not

Please check the specification under the Overview page of your notebook:

<https://www.msi.com/Laptops>

If it is Surround View supported, you can find Surround View feature introduction under your notebook Overview page; if only Matrix Display feature is labeled, then the notebook is not Surround View support.

Visuals

GEFORCE® GTX

GEFORCE® GTX 1070 SLI

VR READY ENTHUSIAST

120Hz 5ms

SURROUND VIEW

Matrix Display

AI Alloy Chassis

TRUE COLOR TECHNOLOGY

BEST SURROUND MODE ON GT SERIES GAMING NOTEBOOKS

Expand the vision for extreme gaming experience. Embrace immersive gaming experience by expanding your gaming real estate across 3 external displays in 4K UHD resolution with the Latest Surround Mode technology.

MSI GT series has innovative design of pure discrete graphics mode. The Matrix Display on GT series therefore supports up to 3 external 4K displays, 4 displays in total simultaneously through one HDMI (4K @ 60Hz) compatible port, one Mini DisplayPort 1.2 and one Thunderbolt 3* (Type-C port) plus the laptop built-in display. Multi-task is made possible even during competitive gameplays. Connect the laptop to HDTV display, Matrix Display supports 4K output with a resolution up to 3840 x 2160 @60Hz.

MSI Matrix Display and Latest Surround Mode technologies create an ideal environment for extreme gaming experience and pleasant multimedia entertainment.

*A Type-C to Mini DisplayPort cable is required.

You can also check [FAQ 1661](#) attachment and find the “NVIDIA Surround View” column to know whether your notebook has Surround View support or not.

| NVIDIA Surround View |
|----------------------|
| YES (dGPU mode) |

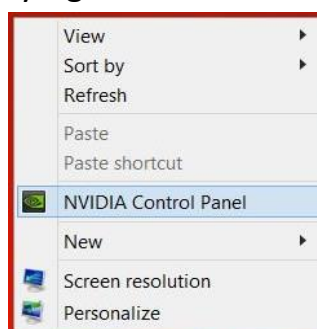
Surround View Setup Guide

Please follow the steps below,

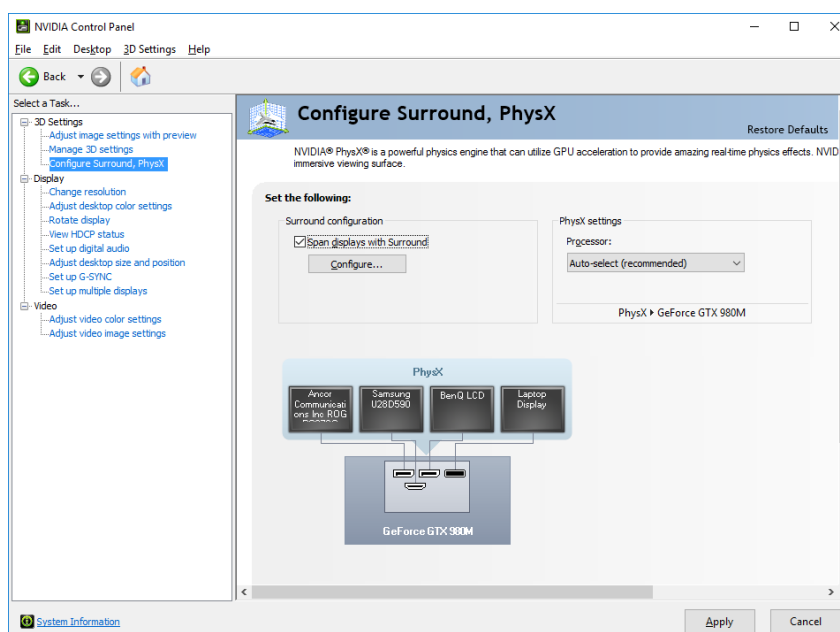
1. Press “ + P” combination key to switch Project mode to “Second screen only”



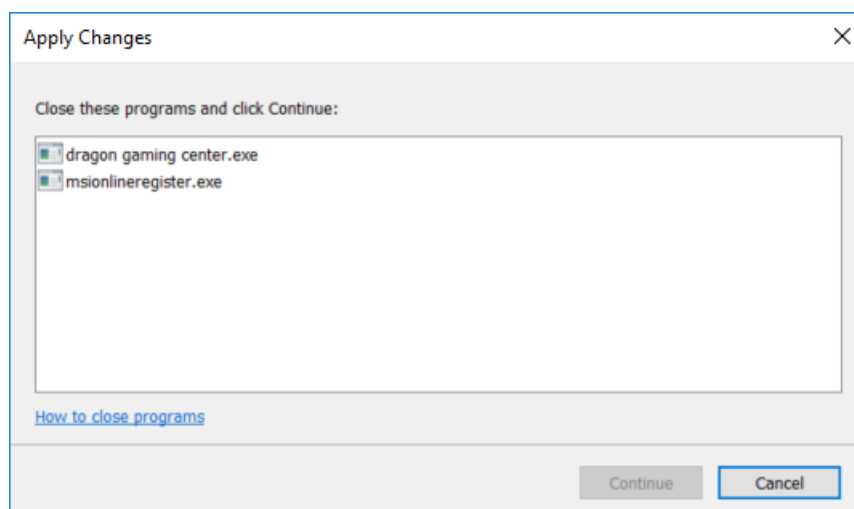
2. Open “Nvidia Control Panel” by right click on the desktop.



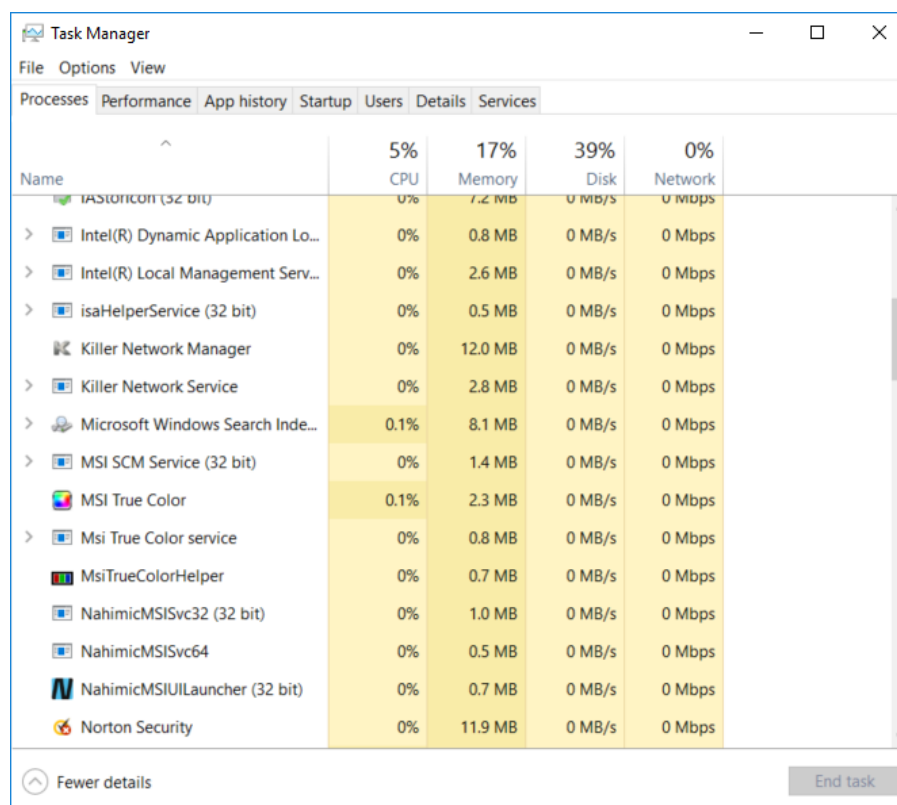
3. Go to “Configure Surround,Physx” and tick the box for “Span displays with Surround” and click “Configure”.



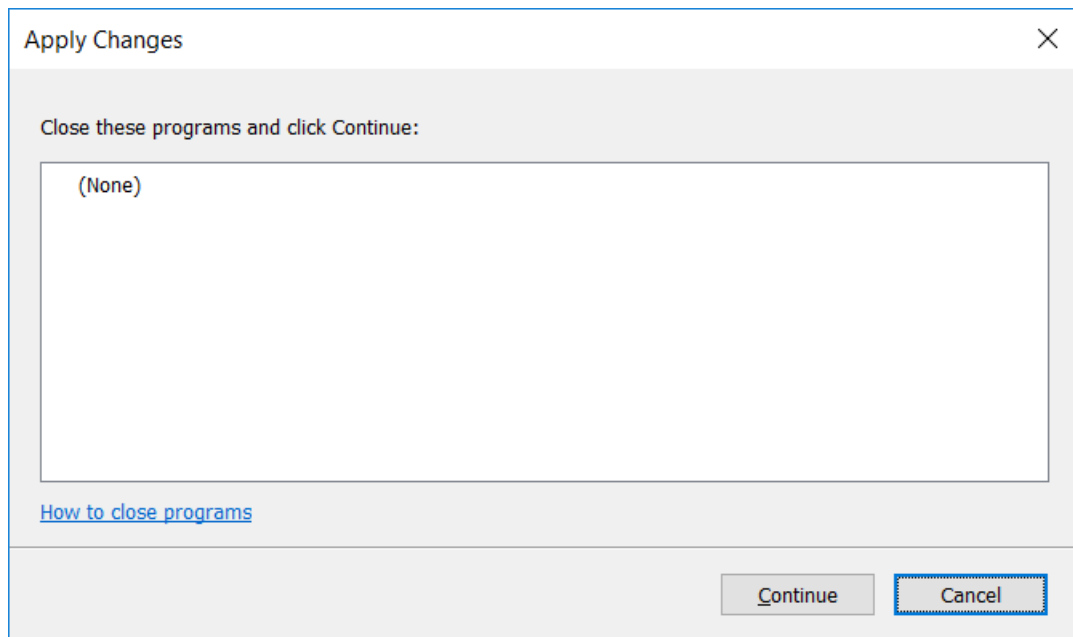
4. A dialogue box would pop up to remind you close some background programs. Such as MSI SCM, Dragon Cetner, MSI reminder.



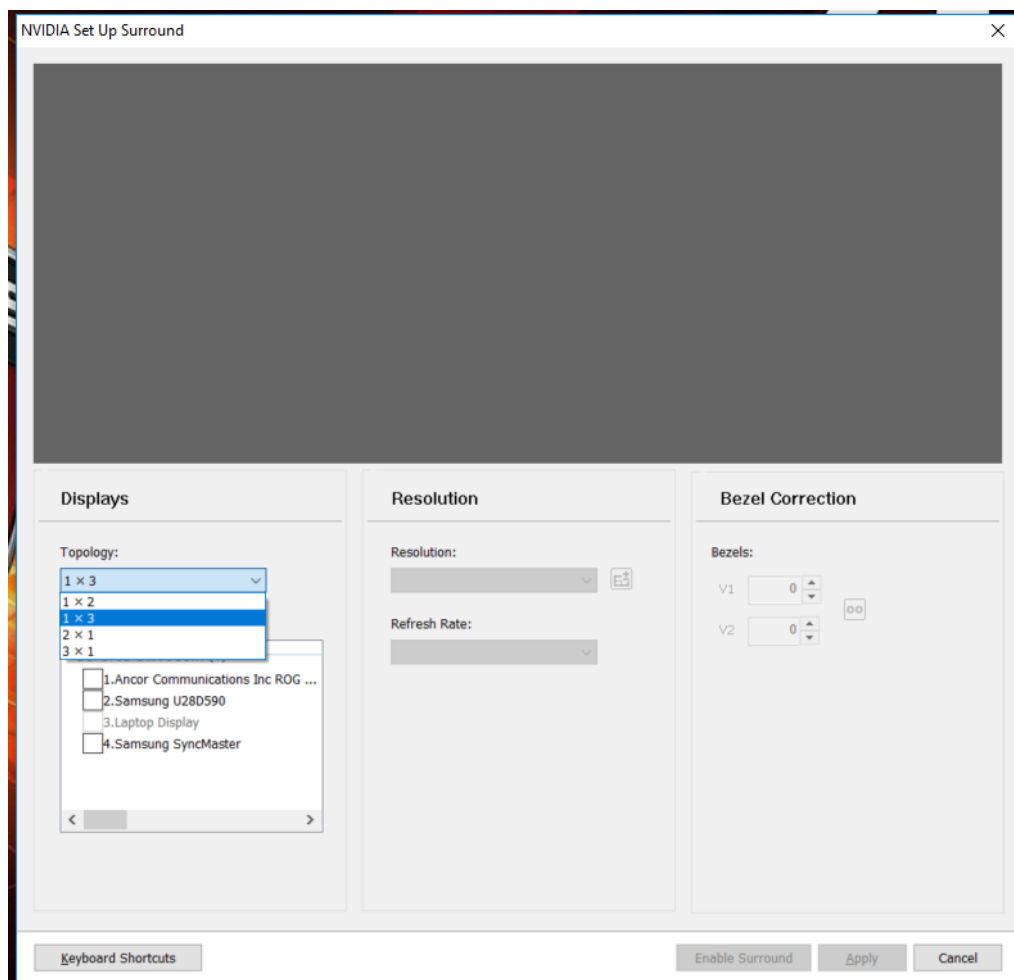
5. Right click on Windows taskbar, and click “Task Manager”, find those programs and click “End task” to close them.



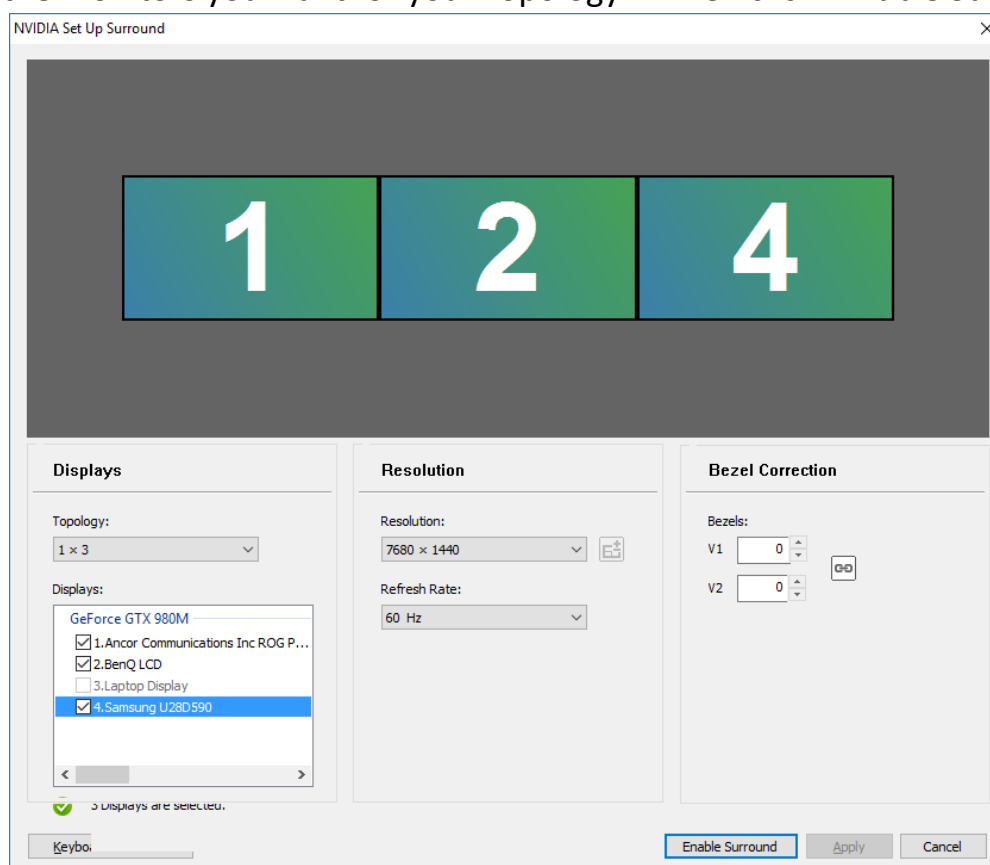
6. Then you can click “Continue” to next step.



7. Choose the Topology you need.



8. Select the monitors you want for your Topology. Then click “Enable Surround”



9. Windows should now recognize the multi displays as one big display.

Note:

Surround View on MSI Notebook only applies to external monitors, **laptop display would not work when Surround View mode is activated.**

If you want to setup surround view on more than 2 external monitors, **it is recommended to prepare the monitors with the same resolution and specification**, because Surround view needs the same resolution, refresh rate and timing parameters, otherwise the setup might be limited to the specification of the lowest display.