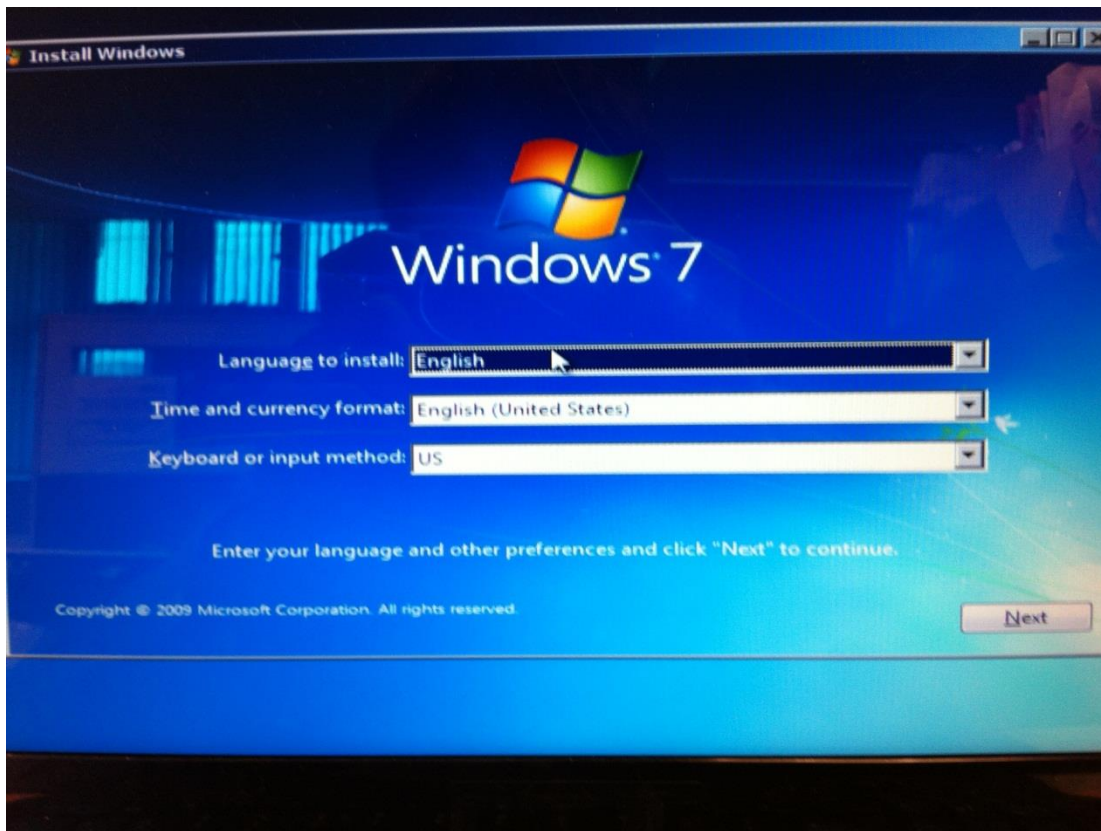


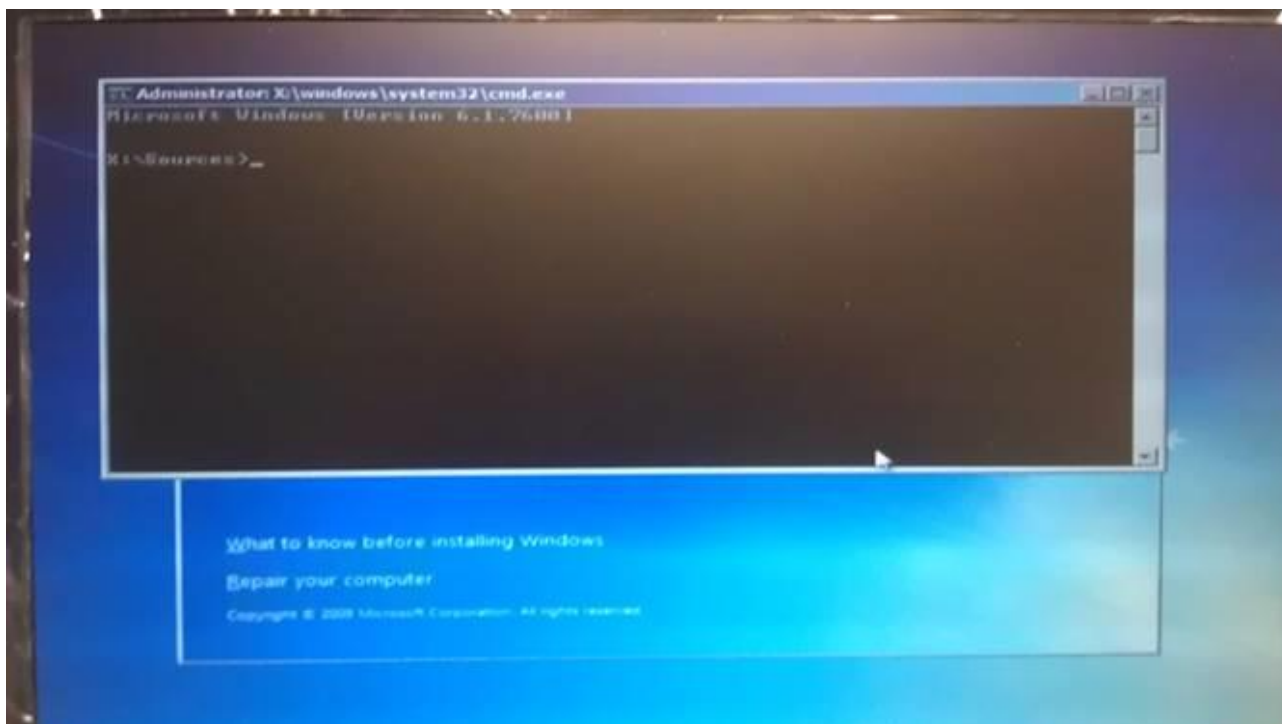


Use Windows 7 installation CD to delete GPT partitions.
SOP Manual

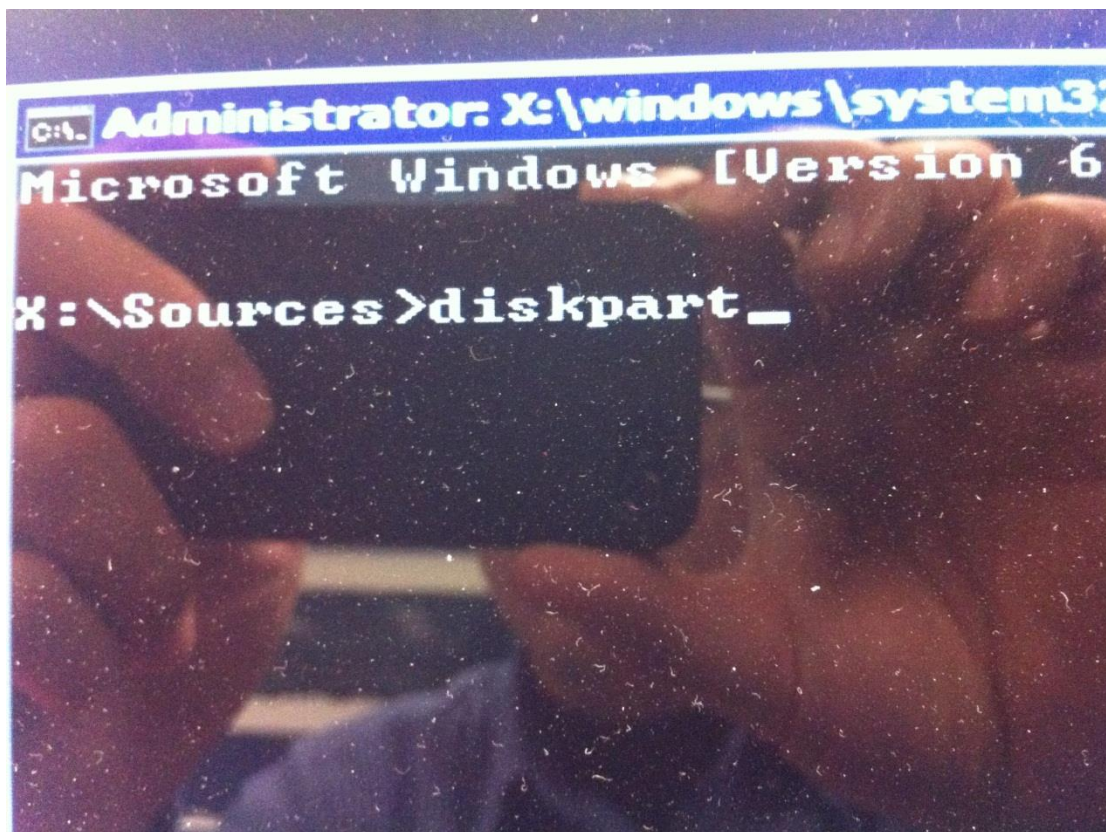
1. Switch the BIOS mode from UEFI to legacy mode.
2. Use Windows 7 installation CD to boot up.
3. Select "Next".



4. Please keep holding Shift Key, and then press F10 to execute command mode.



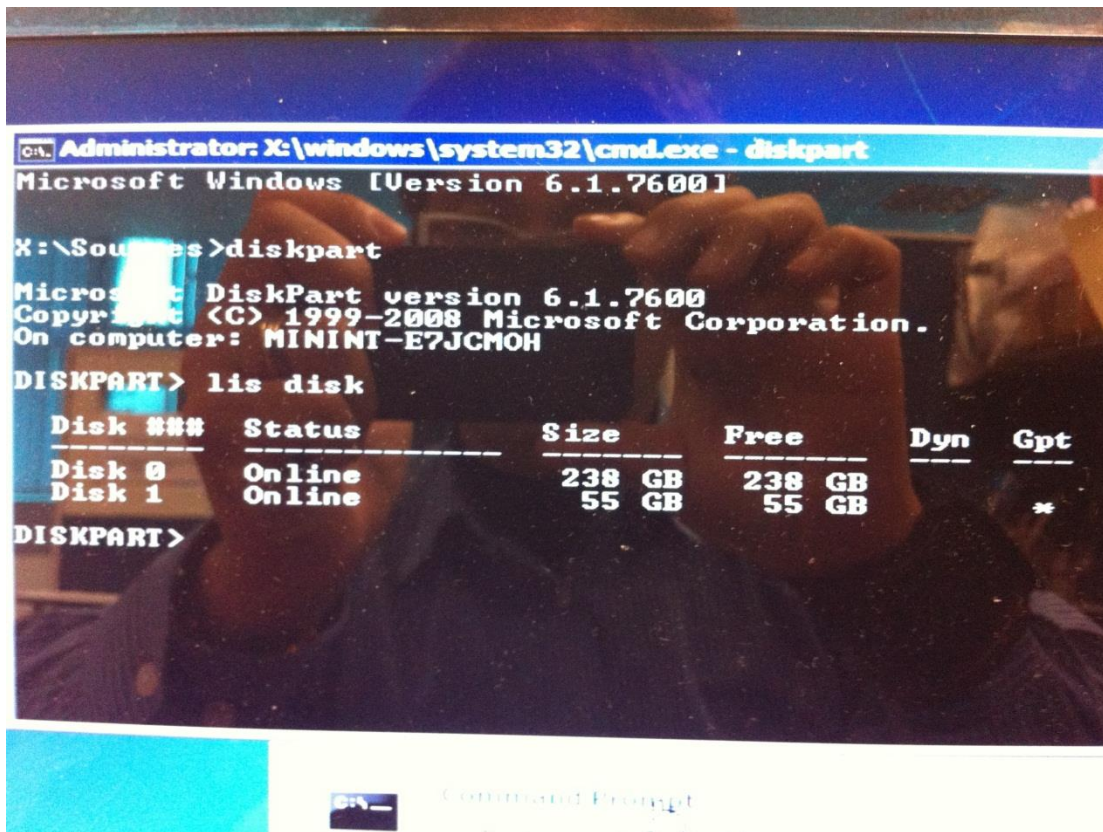
5. Input "diskpart".



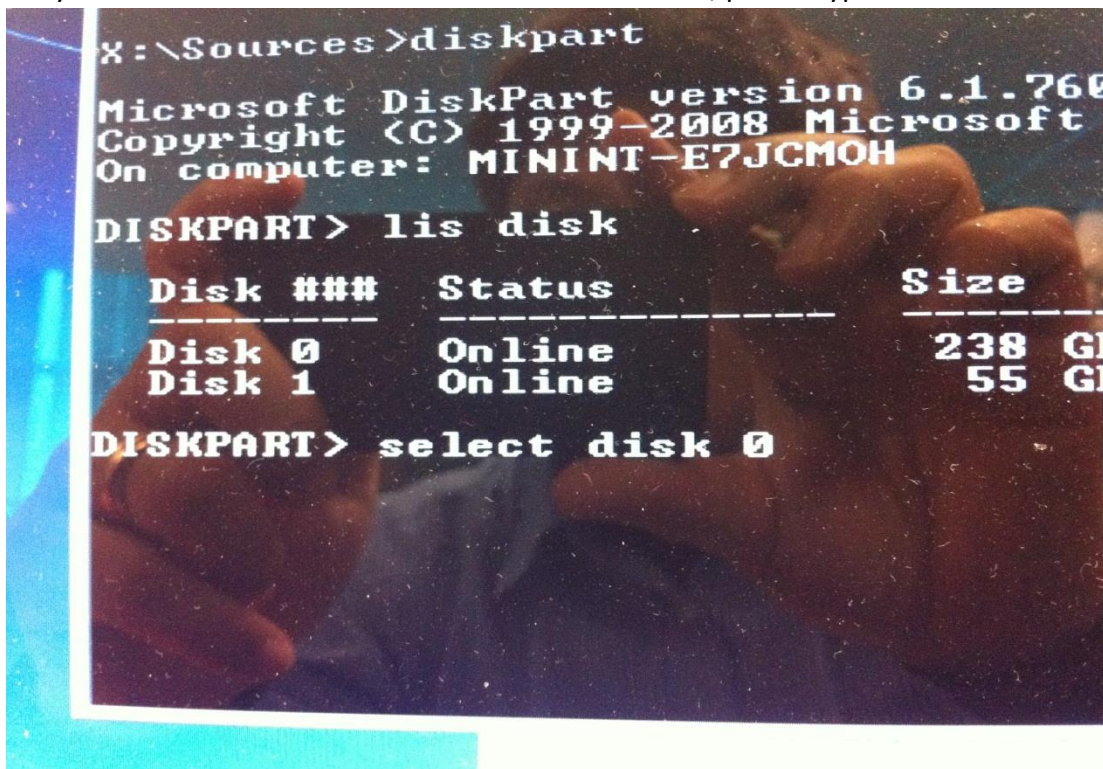
6. Input "list disk".



7. Confirm the disk number which you wanted to delete.



8. Here is the example to delete the 238GB volume of SSD disk, so please type “select disk 0”. If you wanted to delete the 55GB volume of SSD disk, please type “select disk 1”.



9. Directly type “clean” to clean the partition.

```
DISKPART> lis disk

Disk ###      Status              Size
-----      -
Disk 0        Online              238
Disk 1        Online              55

DISKPART> select disk 0
Disk 0 is now the selected disk.
DISKPART> clean_
```

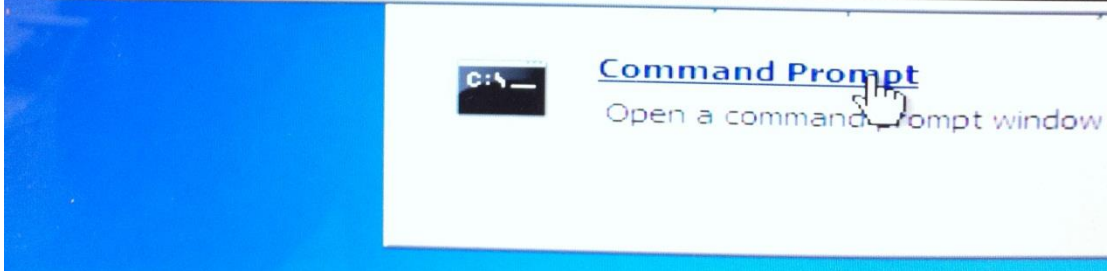


```
MICROSOFT DISKPART version 1.75.7000
Copyright (C) 1999-2008 Microsoft Corporation
On computer: MININT-E7JCMOH

DISKPART> lis disk

Disk ###      Status              Size          Free
-----      -
Disk 0        Online              238 GB         238 GB
Disk 1        Online              55 GB          55 GB

DISKPART> select disk 0
Disk 0 is now the selected disk.
DISKPART> clean
DiskPart succeeded in cleaning the disk.
DISKPART>
```



10. When finished, input “exit” to quit the diskpart. And input “exit” again to quit the Command prompt.

11. Select “shutdown” or “restart”, and re-install the system by using Win7 installation CD.