



Shutdown power management of HDD

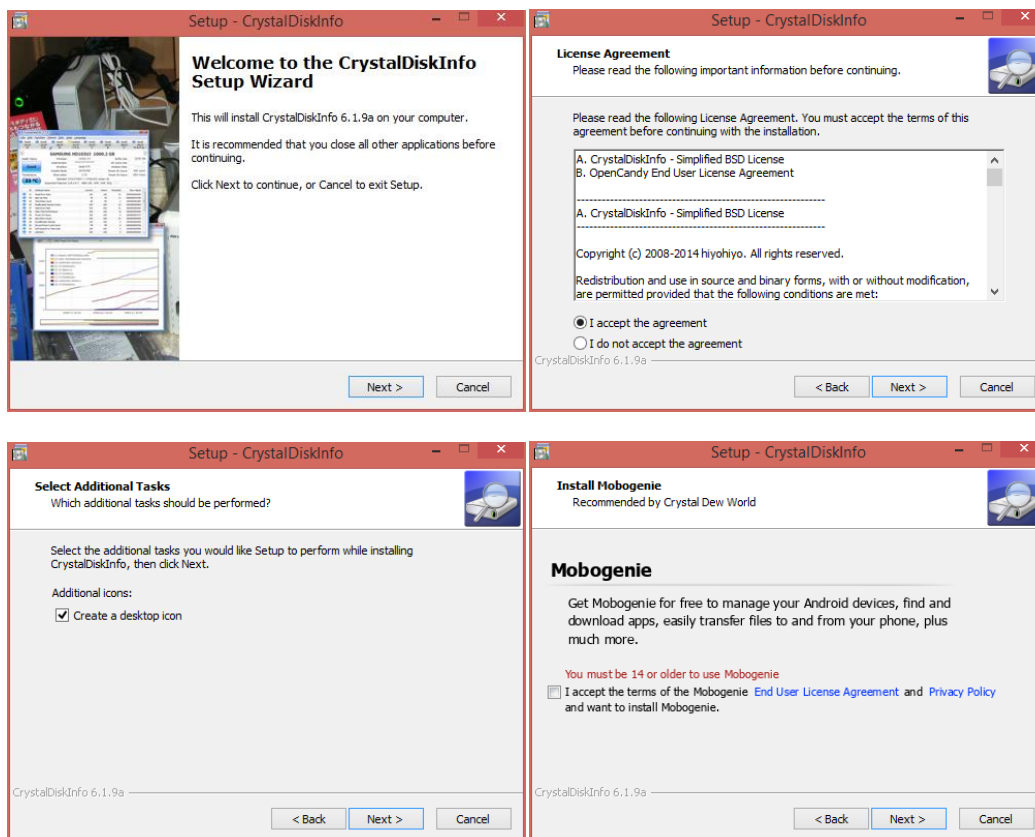
I. CrystalDiskInfo

1. Download CrystalDiskInfo Utility.

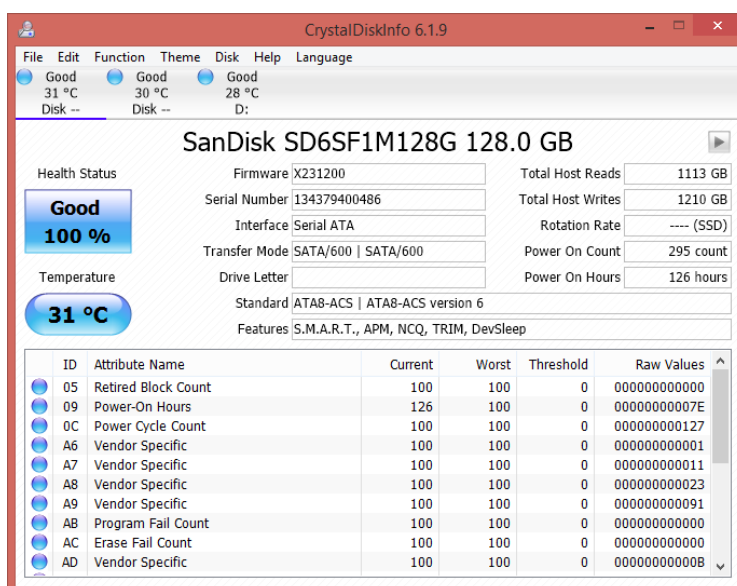
CrystalDiskInfo 6.2.1 [2014/10/2]

<http://crystalmark.info/redirect.php?product=CrystalDiskInfoInstaller-en>

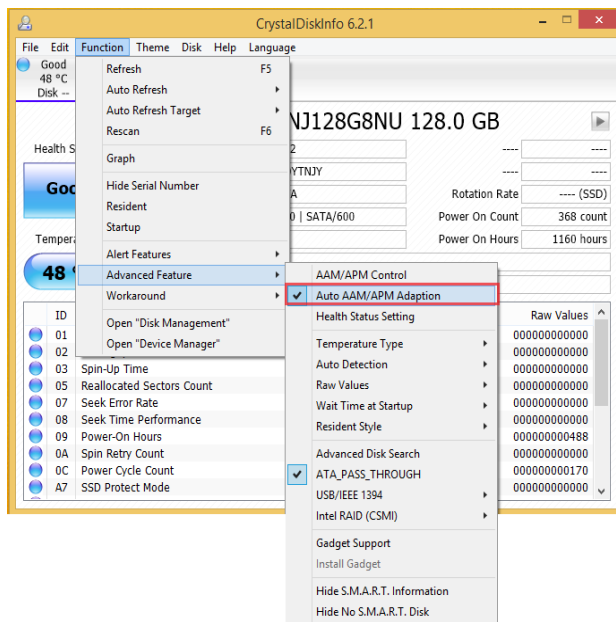
2. Install CrystalDiskInfo.



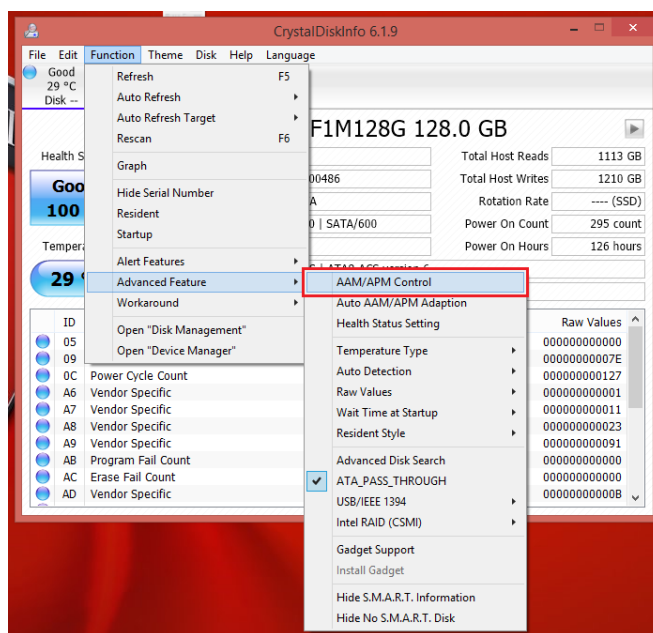
3. Open CrystalDiskInfo.



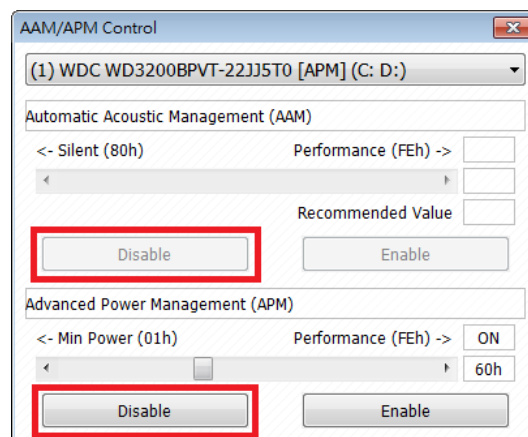
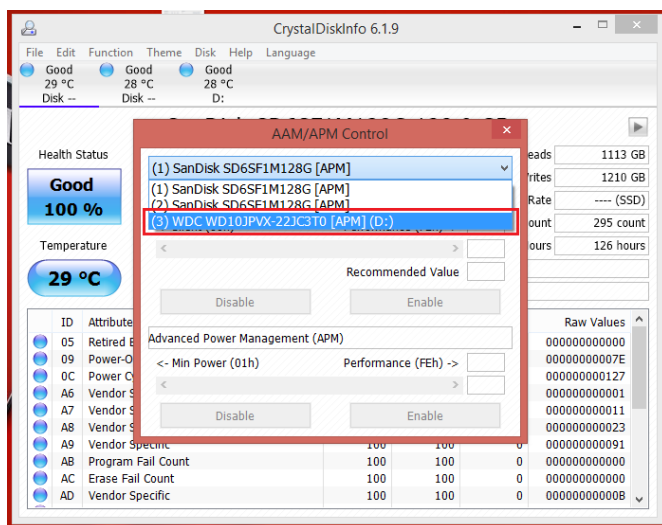
4. Choose Function > Advanced Feature > Auto AAM/APM Adaption



5. Choose Function > Advanced Feature > AAM/APM Control.



6. Choose hard drive.
7. Click Disable on both AAM/APM function to finish settings.



II. KeepAliveHD

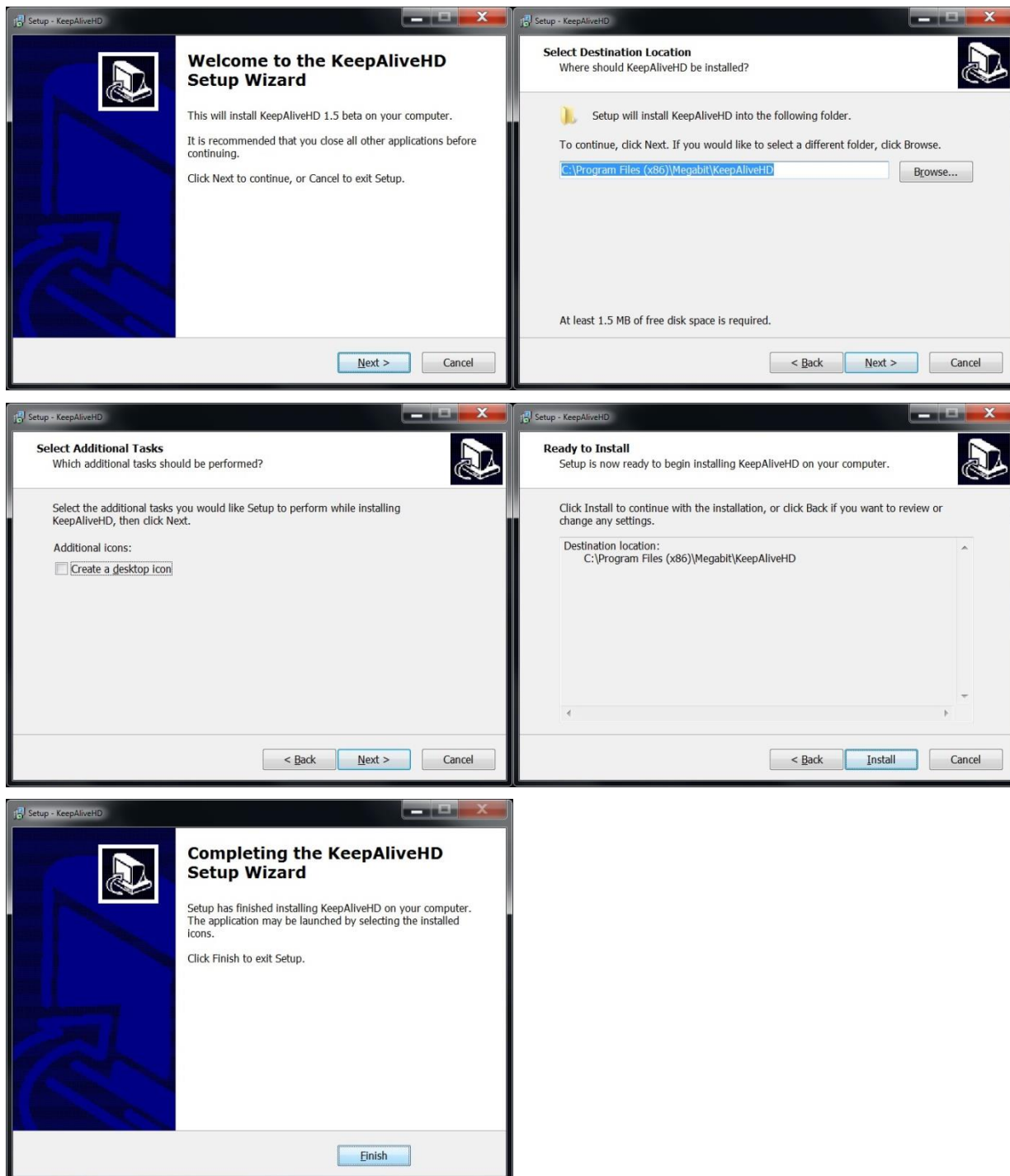
Note1: Some HDDs can't shutdown AAM/APM, so you can use this utility to prevent HDDs from starting power management.

1. Download KeepAliveHD Utility.

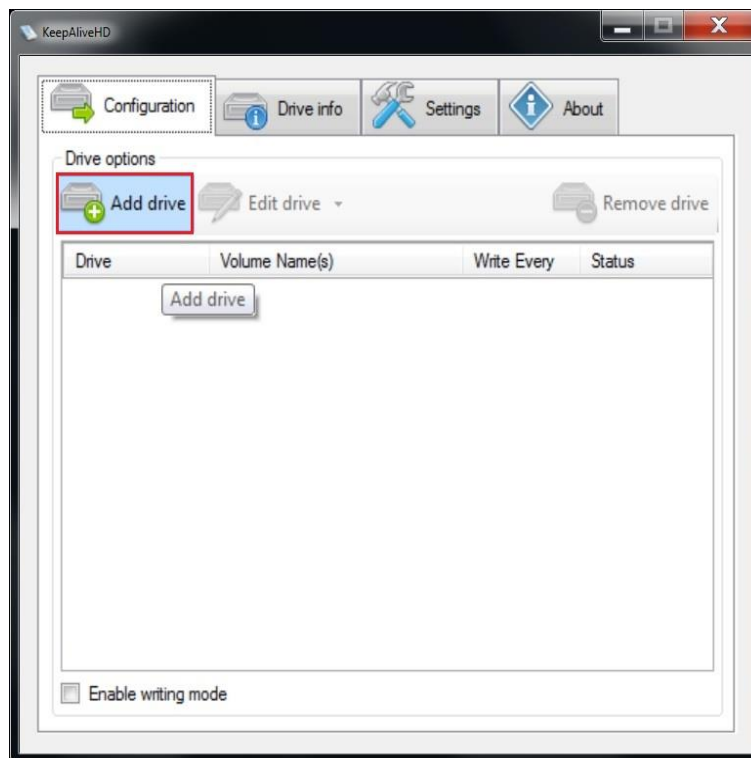
KeepAliveHD 1.5 beta [2014/10/2]

<http://keepalivehd.codeplex.com/>

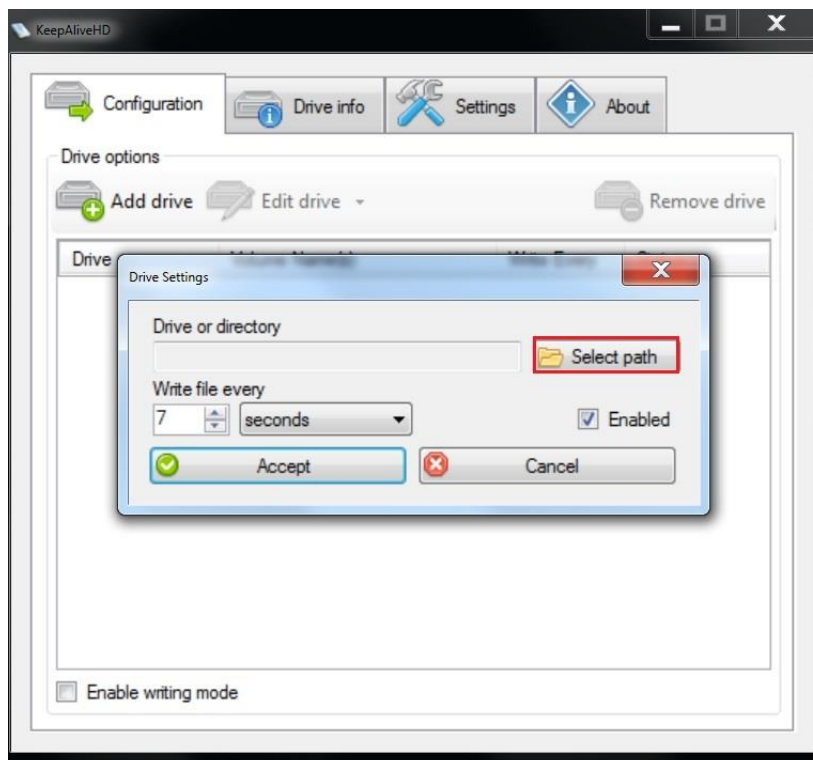
2. Install KeepAliveHD.



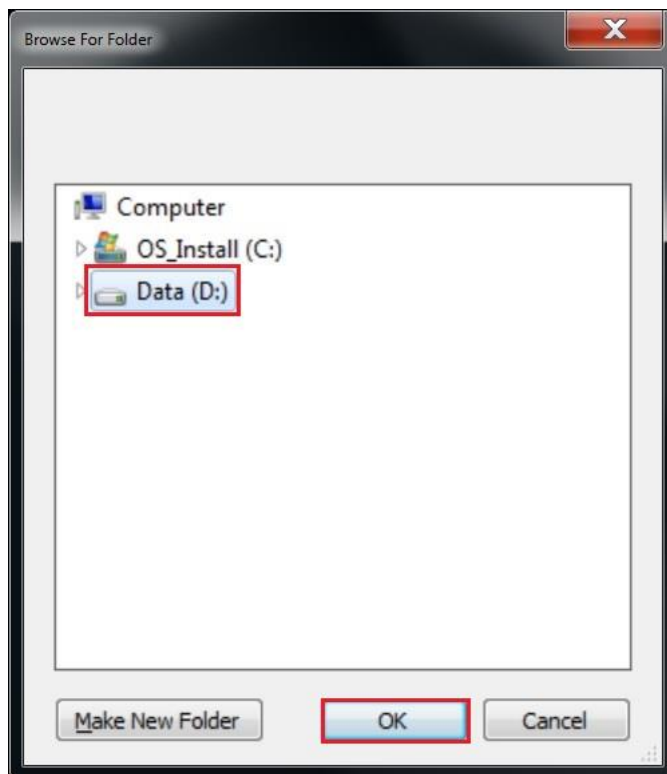
3 Open KeepAliveHD and click Add drive.



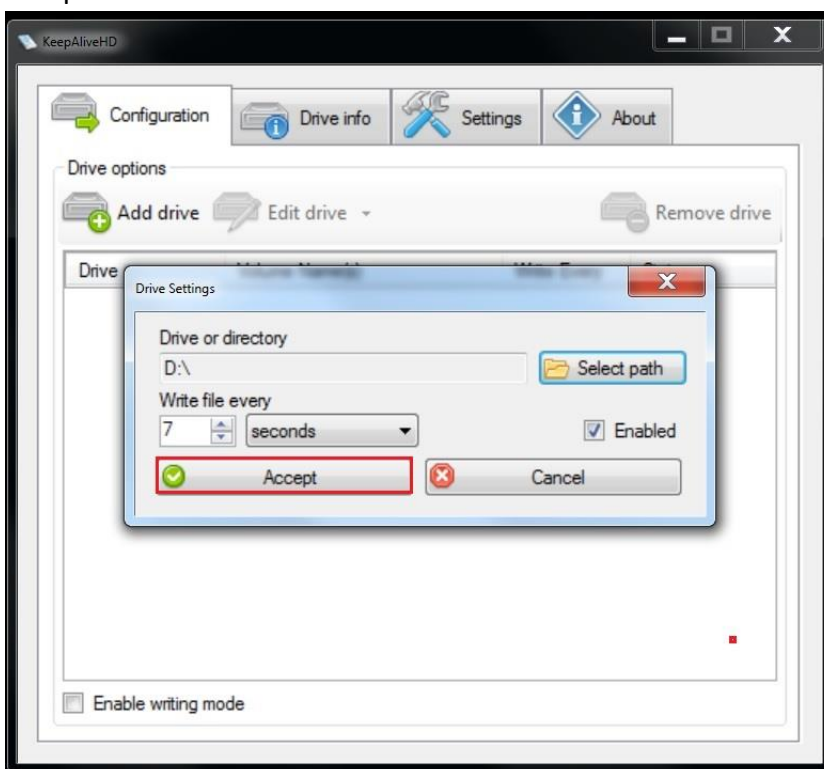
4. Choose Select path



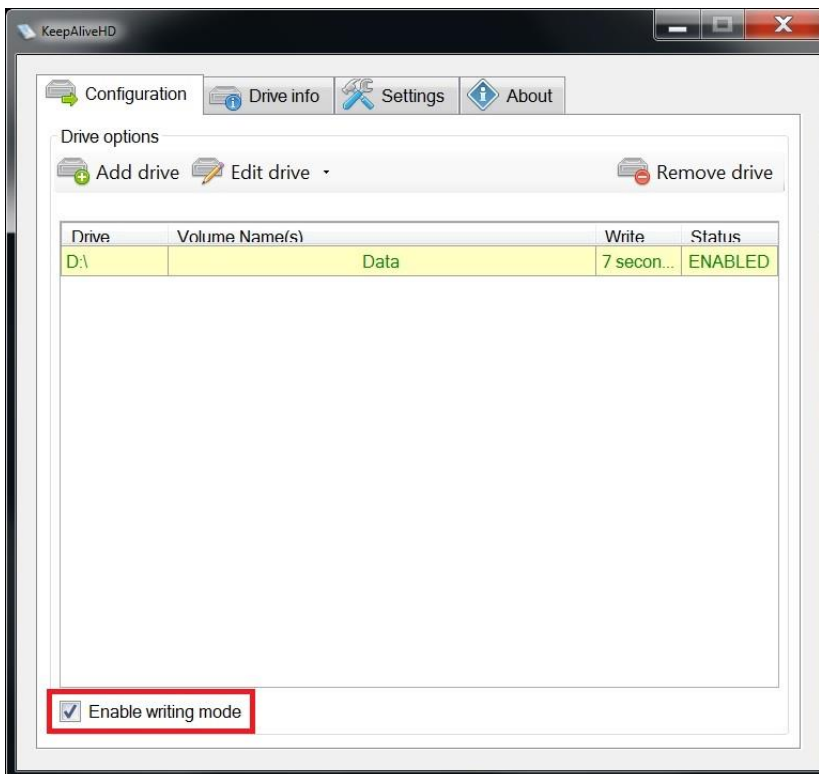
5. Choose the disk or the folder and then select OK.



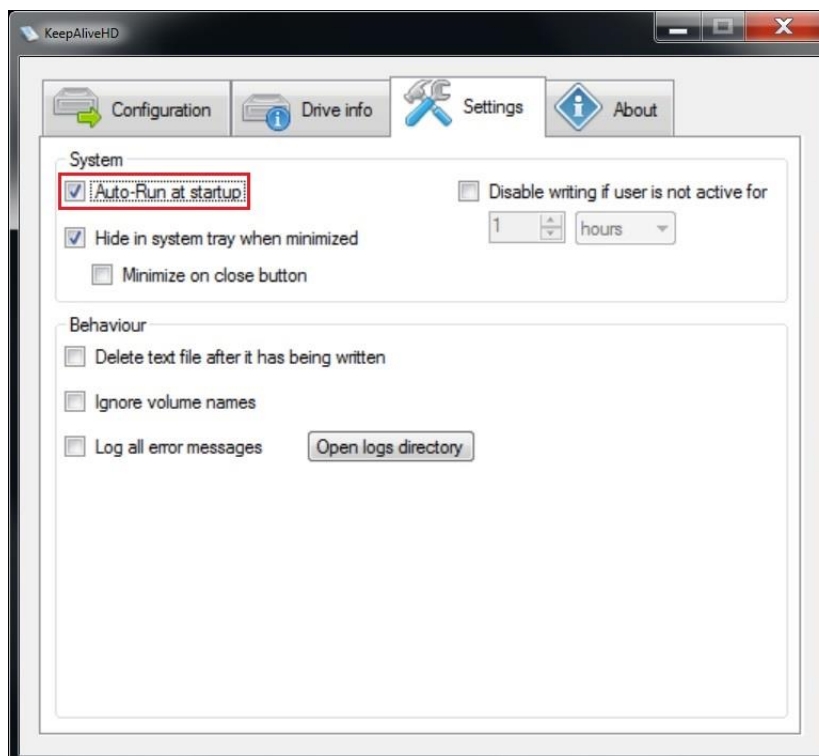
6. Choose Accept.



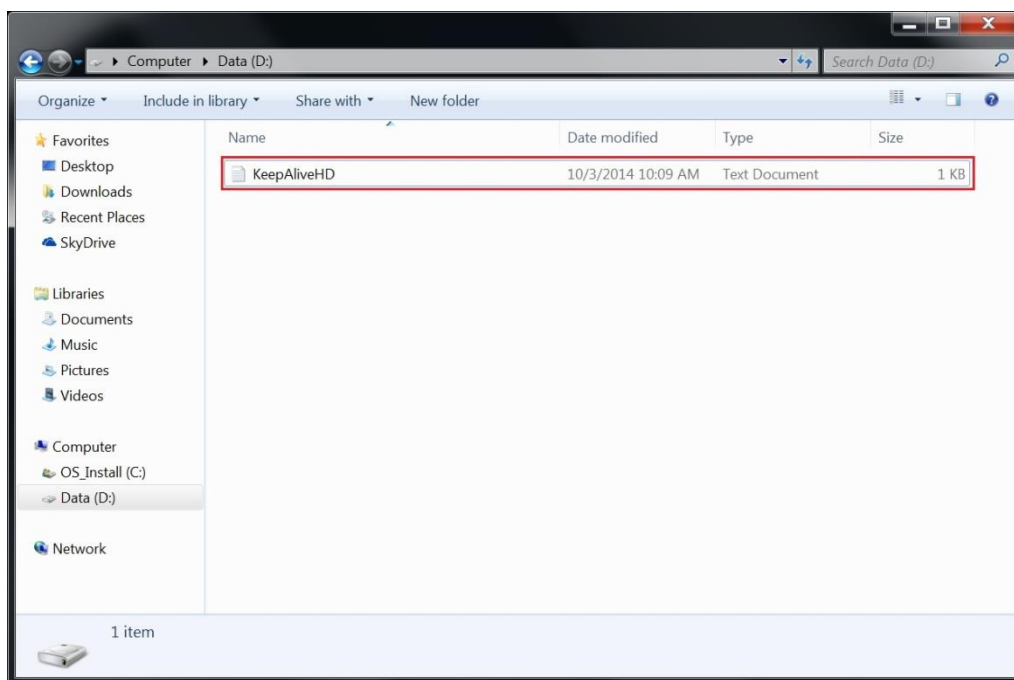
7. Choose Enable writing mode.



8. Choose Settings >> Auto-Run at startup function to finish settings.



Note2: After settings are finished, there will be a text file “KeepAliveHD.txt” created in your selected disk or folder.



Note3: Since the timeout for ECO mode of each vendor’s HDD is different, if the HDD still goes into ECO mode, you can observe the following steps to decrease the timeout.

