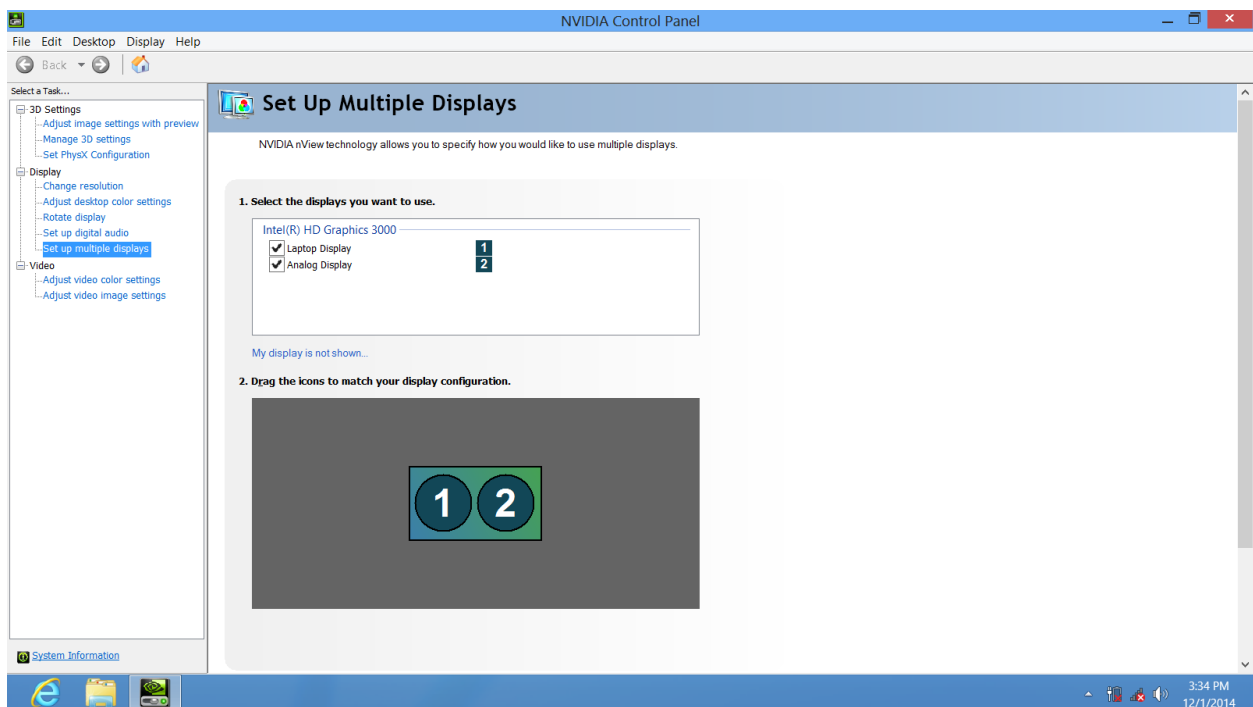


Q: When using Fn+F2 to switch the display output, I can only use Duplicate mode or Extend mode. If I want to use another mode, how should I switch? And when using Windows+P keys to switch to Extend mode, it only shows as Duplicate mode. Is this normal?

A: This is normal. Suggest you only use Fn+F2 to switch the display output. Don't use Windows+P keys.

And NVIDIA driver will automatically remember your last setting, so Fn+F2 can only switch to the state you set. If you need to change the mode for switching, you can enter NVIDIA Control Panel to set it up.

1. After connecting the external display, right-click on the Desktop and select "Set up multiple displays" option.



2. Right-click on the picture below to set it as Extend mode or Duplicate mode.

