A large, stylized red dragon graphic is positioned on the left side of the page. The dragon is rendered in a highly detailed, almost metallic or glossy style, with intricate patterns on its scales and wings. It is shown in a dynamic, leaping pose, facing towards the right. The background is a dark, textured gradient, possibly representing a night sky or a stormy atmosphere.

How to tweak your PC game settings? Graphics Settings vs Performance **Heroes of the Storm**

Prepared by MSI Notebook FAE
Version 1.3
July 2015



Heroes of the Storm



- The FPS result of Heroes of the Storm is collected by running matches with **A.I. players**. The game map is tested only on the **Blackheart's Bay**.
- Due to the different hardware configurations (such as different CPUs, RAMs, and etc.), the FPS result may be **different** on the same graphics.
- The giving chart shows you the FPS under different graphics settings with different graphic cards. Find the graphics settings resulting **FPS 45** or above to have the best and smoothest game-play experience for your laptop.
- Game Default: The native graphics settings were automatically preset by the game itself according to the hardware configuration.

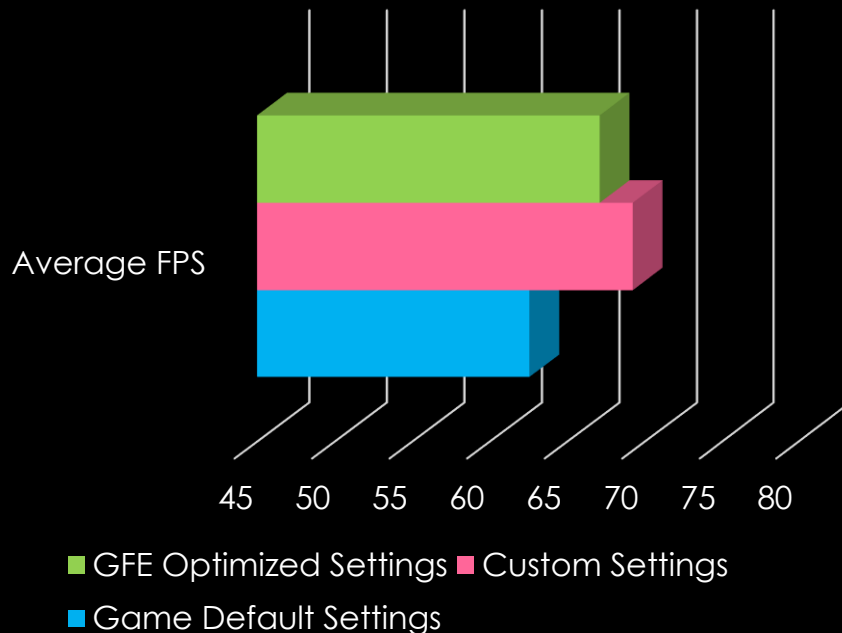


Heroes of the Storm on 950M



Graphics Settings	GFE Optimized Settings	Custom Settings	Game Default Settings
Antialias	On	Off	Off
Resolution	1920x1080	1920x1080	1920x1080
Graphics Quality	Custom	Medium	High
Texture Quality	High	Medium	High
Shaders	High	Medium	High
Post-Processing	Medium	Medium	Medium
Shadows	High	Medium	High
Physics	Medium	Medium	High
Models	Ultra	High	High
Terrain	Ultra	Medium	High
Lighting	Ultra	Low	High
Movies	Low	Low	Low
Reflections	On	Off	Off
Effects	Medium	Medium	High
Indirect Shadows	Off	Off	Off

FPS per setting on 950M



PS: The custom settings altered by simply changing Graphic Quality & Texture Quality which then automatically alter the other settings.

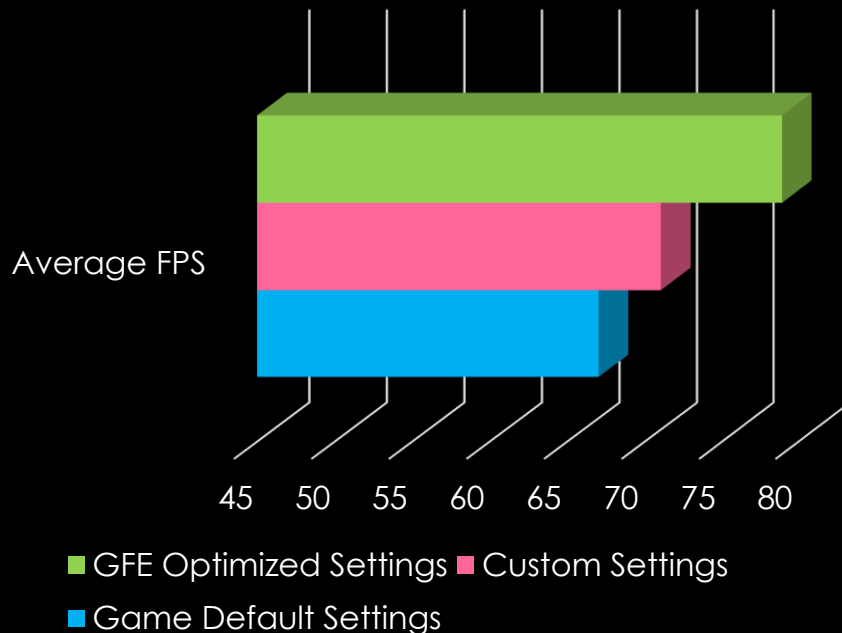


Heroes of the Storm on 960M



Graphics Settings	GFE Optimized Settings	Custom Settings	Game Default Settings
Antialias	Off	Off	Off
Resolution	1920x1080	1920x1080	1920x1080
Graphics Quality	Custom	Medium	High
Texture Quality	Medium	High	High
Shaders	Medium	Medium	High
Post-Processing	Medium	Medium	Medium
Shadows	Ultra	Medium	High
Physics	Off	Medium	High
Models	High	High	High
Terrain	Ultra	Medium	High
Lighting	Low	Low	High
Movies	Low	Low	Low
Reflections	Off	Off	Off
Effects	Low	Medium	High
Indirect Shadows	Off	Off	Off

FPS per setting on 960M



PS: The custom settings altered by simply changing Graphic Quality & Texture Quality which then automatically alter the other settings.

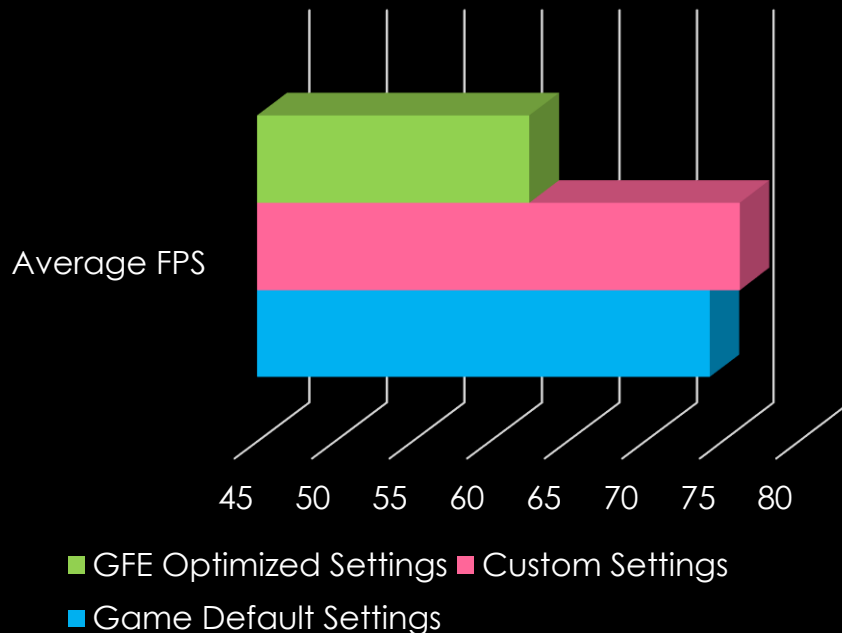


Heroes of the Storm on 965M



Graphics Settings	GFE Optimized Settings	Custom Settings	Game Default Settings
Antialias	On	Off	Off
Resolution	1920x1080	1920x1080	1920x1080
Graphics Quality	Custom	Medium	High
Texture Quality	Ultra	High	High
Shaders	Ultra	Medium	High
Post-Processing	Ultra	Medium	Medium
Shadows	Ultra	Medium	High
Physics	Extreme	Medium	High
Models	High	High	High
Terrain	Ultra	Medium	High
Lighting	Ultra	Low	High
Movies	Low	Low	Low
Reflections	On	Off	Off
Effects	Ultra	Medium	High
Indirect Shadows	On	Off	Off

FPS per setting on 965M



PS: The custom settings altered by simply changing Graphic Quality & Texture Quality which then automatically alter the other settings.

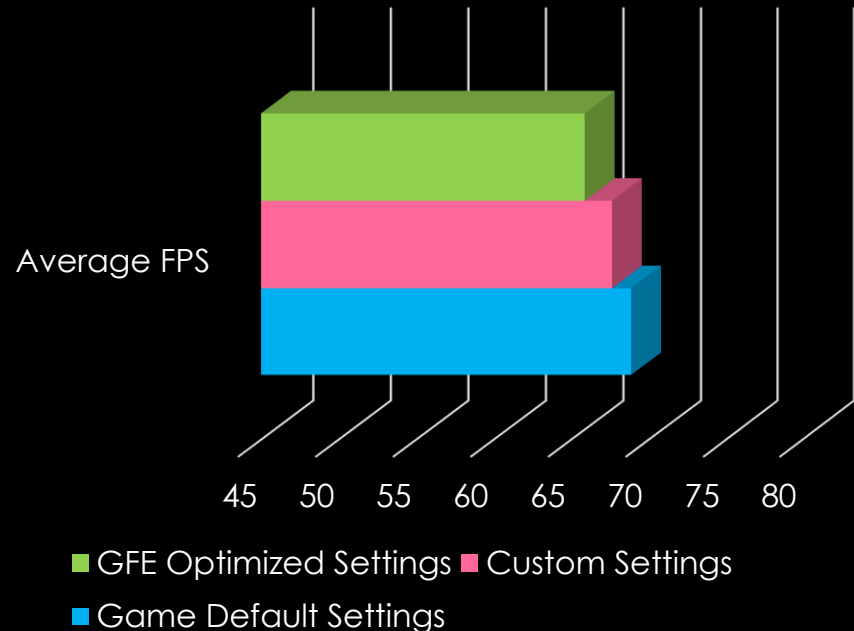


Heroes of the Storm on 970M



Graphics Settings	GFE Optimized Settings	Custom Settings	Game Default Settings
Antialias	On	Off	Off
Resolution	1920x1080	1920x1080	1920x1080
Graphics Quality	Custom	High	Extreme
Texture Quality	Ultra	High	Ultra
Shaders	Ultra	High	Ultra
Post-Processing	Ultra	Medium	Ultra
Shadows	Ultra	High	Ultra
Physics	Extreme	High	High
Models	High	High	High
Terrain	Ultra	High	Ultra
Lighting	Ultra	High	Ultra
Movies	Low	Low	Low
Reflections	On	Off	Off
Effects	Ultra	High	High
Indirect Shadows	On	Off	On

FPS per setting on 970M



PS: The custom settings altered by simply changing Graphic Quality & Texture Quality which then automatically alter the other settings.

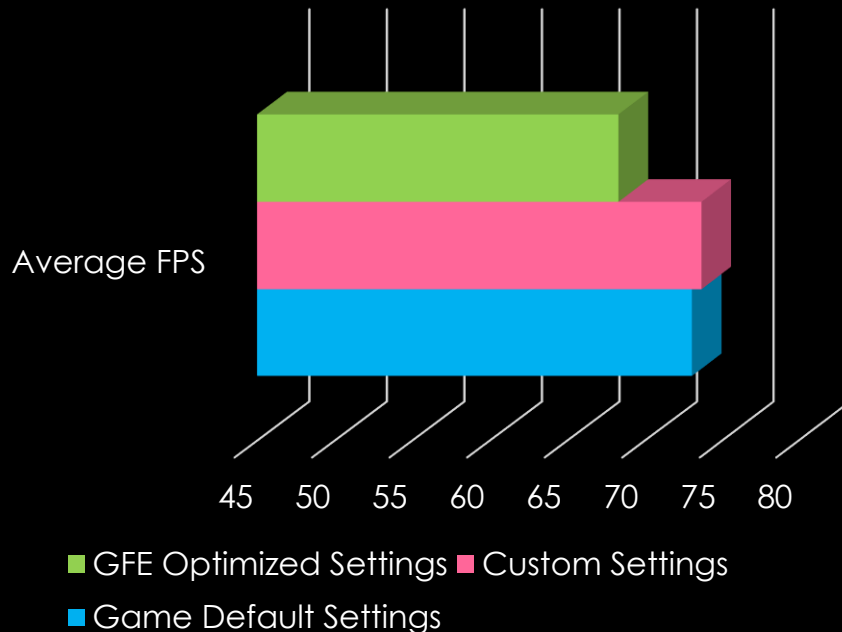


Heroes of the Storm on 980M



Graphics Settings	GFE Optimized Settings	Custom Settings	Game Default Settings
Antialias	On	Off	Off
Resolution	1920x1080	1920x1080	1920x1080
Graphics Quality	Custom	Ultra	Extreme
Texture Quality	Ultra	Ultra	Ultra
Shaders	Ultra	Ultra	Ultra
Post-Processing	Ultra	Ultra	Ultra
Shadows	Ultra	Ultra	Ultra
Physics	Extreme	High	High
Models	High	High	High
Terrain	Ultra	Ultra	Ultra
Lighting	Ultra	Ultra	Ultra
Movies	Low	Low	Low
Reflections	On	Off	Off
Effects	Ultra	High	High
Indirect Shadows	On	Off	On

FPS per setting on 980M



PS: The custom settings altered by simply changing Graphic Quality & Texture Quality which then automatically alter the other settings.



System Information



GPU	Marketing Name	CPU	Storage	RAM	VRAM
GTX 980M	GT72 2QE	Intel® Core™ i7-4710HQ 2.50GHz	SSD x 2 (RAID 0)	8G x 2	GDDR5 8GB
GTX 970M	GS60 2QE				GDDR5 6GB
GTX 965M	GS70 2QD				GDDR5 2GB
GTX 960M	GE62 2QD				
GTX 950M	PX60 2QD				
		Intel® Core™ i7-4720HQ 2.60GHz			

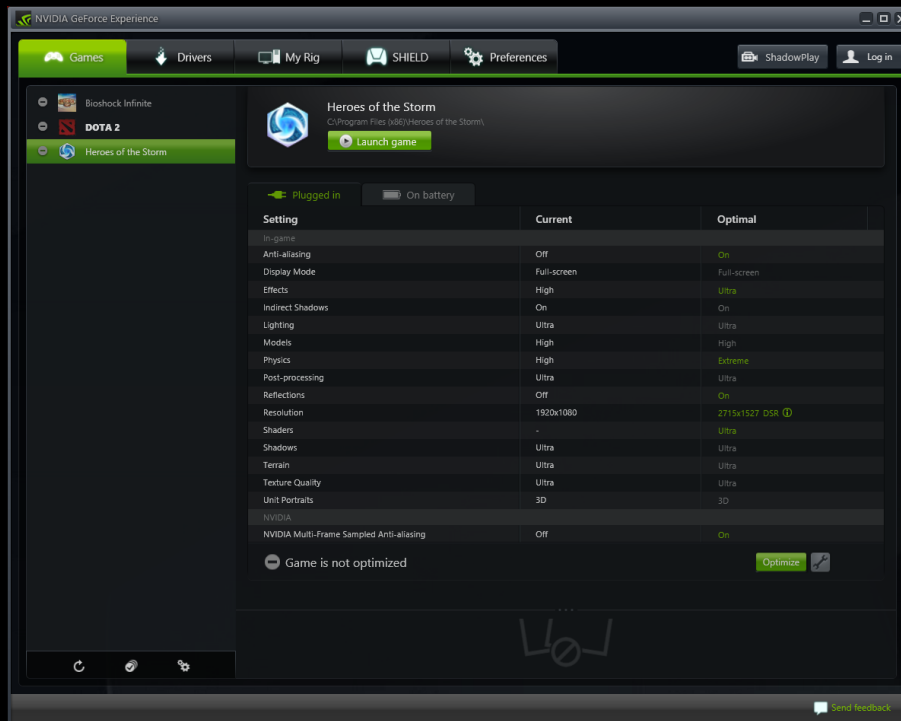
*The game play of Heroes of Storm is simulated by human players on the latest NVIDIA graphics driver 353.30 on Windows 8.1 64-bits.



Apply NVIDIA GFE Optimization



- How to apply the NVIDIA GeForce Experience optimized game settings?
 - Open the GeForce Experience.
 - In Games tab, find Heroes of the Storm and click the “Optimize” button to apply the optimized settings.
 - GFE optimized settings will try to provide relatively better quality and also maintain a smoother FPS.





Frequently Asked Questions



- How to achieve the best performance and amazing gaming experience on MSI Notebook?
<http://www.msi.com/faq/nb-1308.html>
- System sometimes lags after playing computer games for a while. The problem gets worse when I turn on all special effects in game setting.
<http://www.msi.com/faq/nb-284.html>
- I have game lags when I play the game installed on my hard drive, and I can constantly hear sounds from my hard drive when it's working.
<http://www.msi.com/faq/nb-977.html>
- When running some PC games, the game screen didn't properly render in full screen. Some of them can't stretch to the full screen, or even appear some graphic tears when playing.
<http://www.msi.com/faq/nb-1399.html>
- How to improve the quality of wireless connection? (For 802.11AC Wireless Adapter: Intel® Dual Band Wireless-AC 3160 / 7260 & Killer Wireless AC 1525)
<http://www.msi.com/faq/nb-1178.html>

*Find more FAQs [HERE](#).