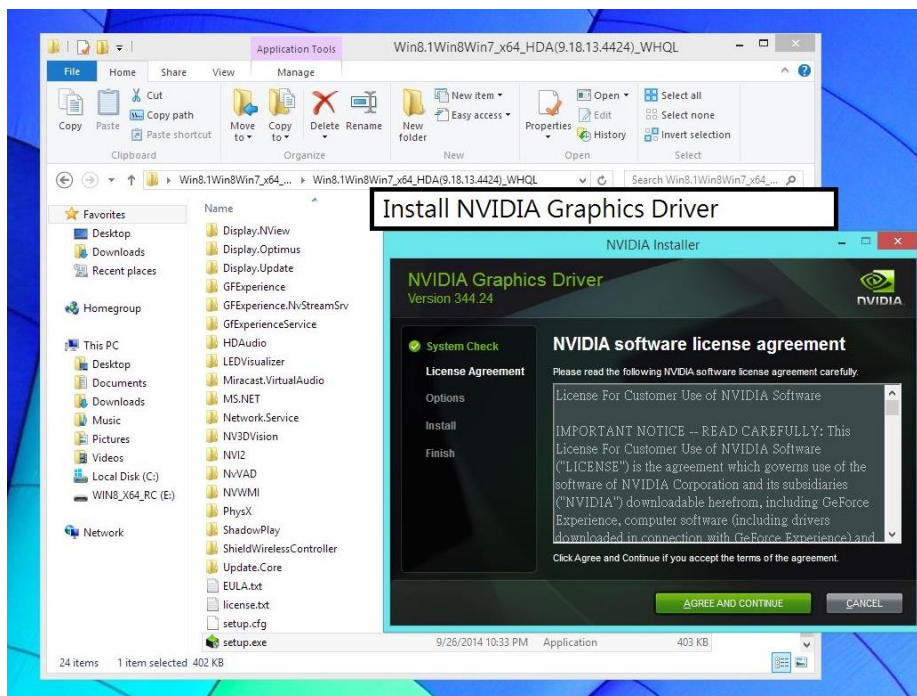




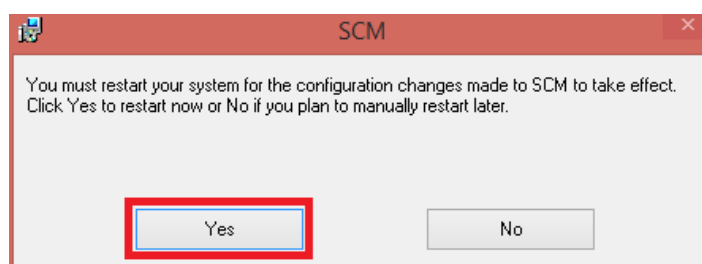
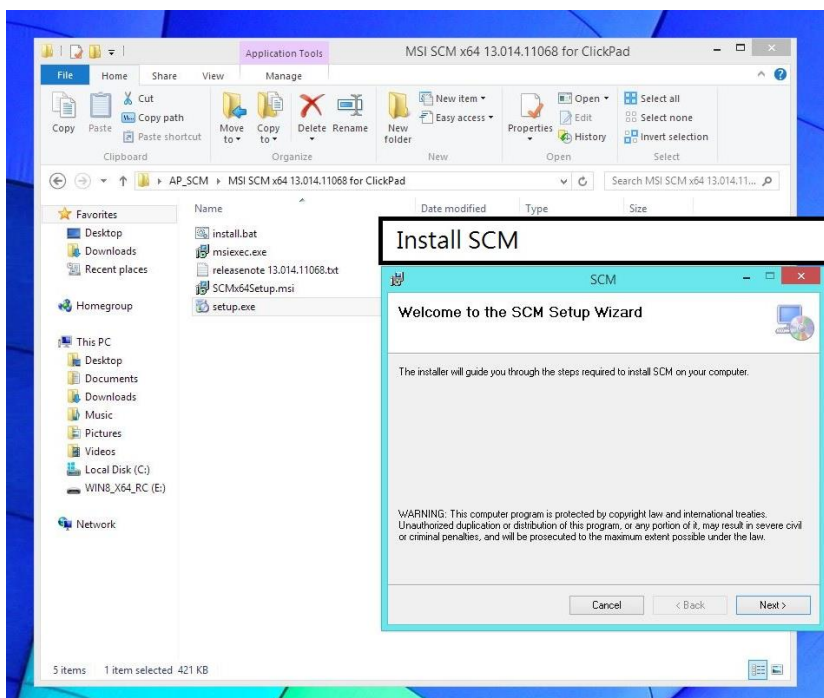
# Graphics Driver Installation Order



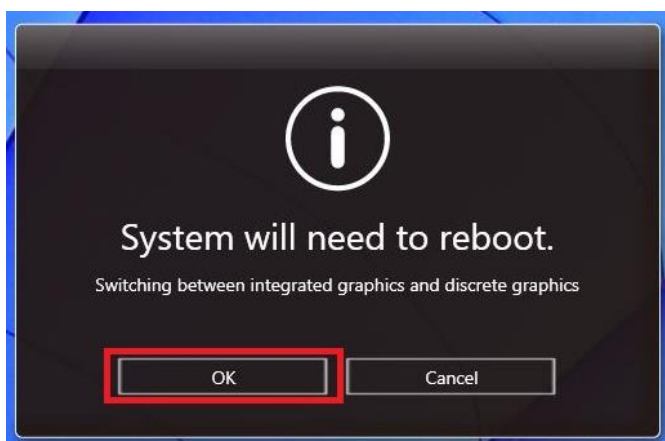
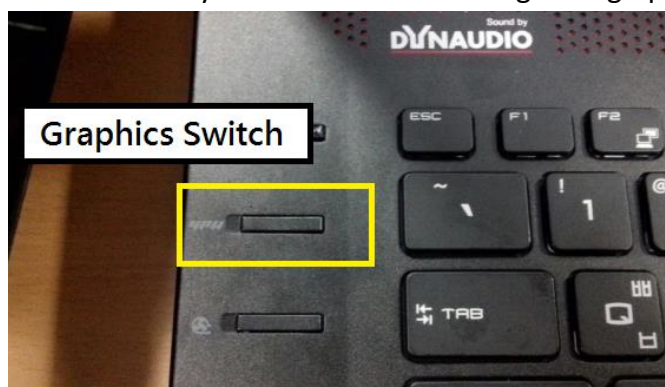
## 2. Install NVIDIA Graphics driver.



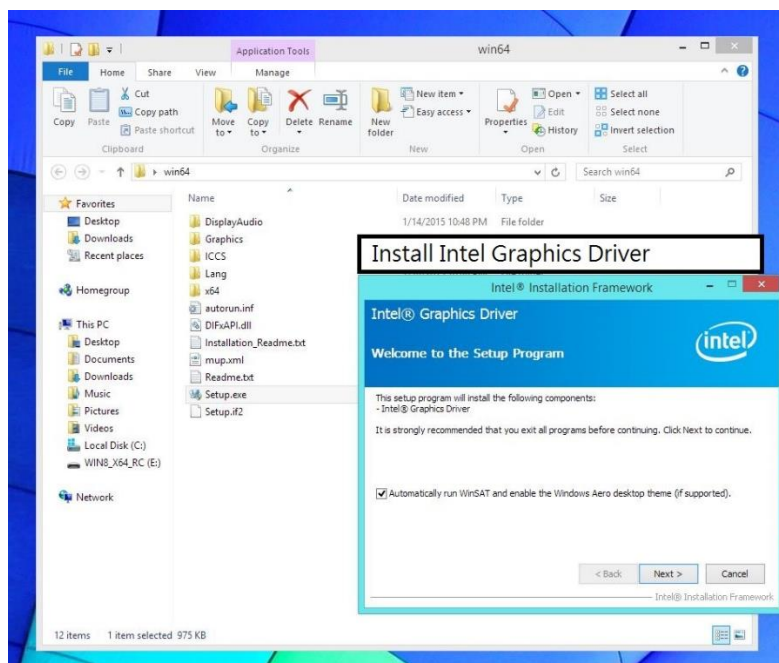
## 3. Follow the instruction to finish installing the SCM. When the system restart reminder shows up, choose "yes" to restart the system.



- After the system resrtart, press the GPU button to switch to integrated graphics (UMA GPU) mode. Click “OK” to restart the system and switch to integrated graphics mode.



- Install Intel graphics driver and restart the system after the installation process.



- Now the installation is complete, you can use the GPU switch button to manually swtich to different GPU mode.

-END-