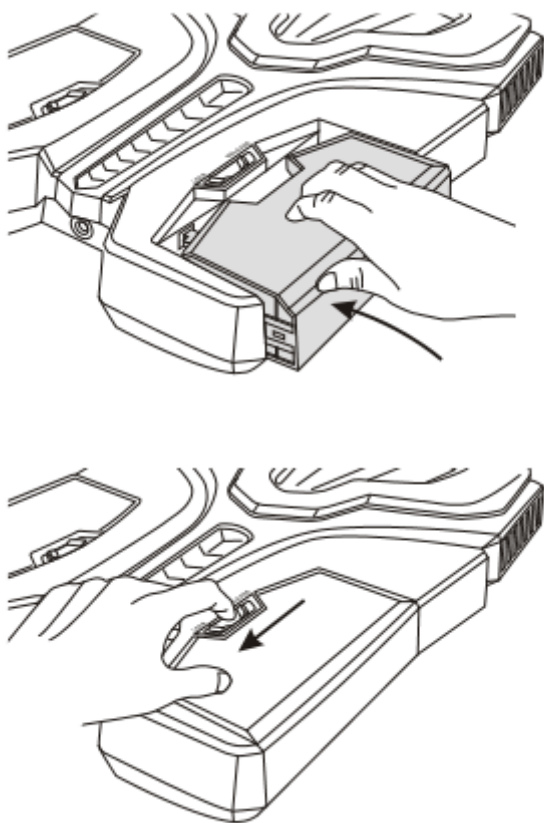


[How to] MSI VR ONE battery pack & cables installation guide

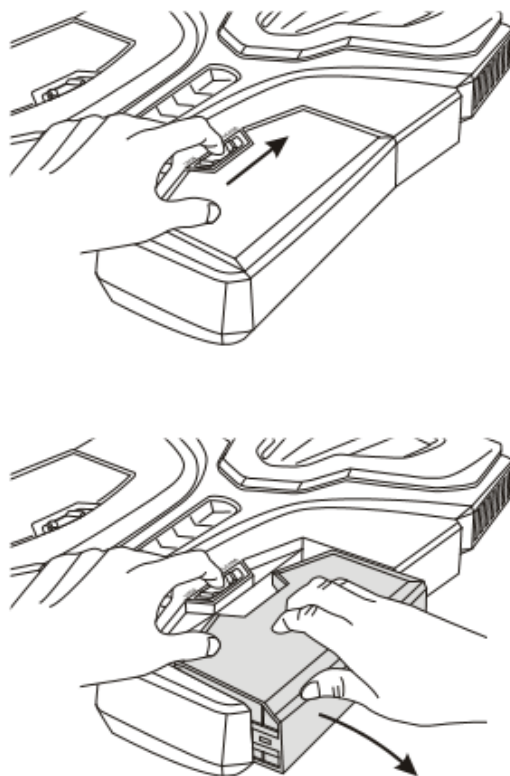
- i** Users can hot-swap one battery without using an adaptor. However, it is necessary to have your VR backpack PC plugged to a power socket before removing both batteries.

Battery pack removal and installation

Install the Battery



Remove the Battery



Cautions

- i** Improper installation behavior may damage the battery slot and connectors. Please avoid the wrong behaviors of the following figures.

Don't install or remove the battery on your own when you are still wearing VR ONE backpack.



Please remove the battery after you take off VR ONE backpack.



Don't install the battery at wrong angles.



Please align the slot to install the battery.



Don't unplug VR headset cables when you are wearing VR ONE backpack.



Please unplug VR headset cables gently after you take off VR ONE backpack.



- i** To avoid any damage, if the battery hook stocks at a certain angle and is not locate at its proper position (like the picture on the lower right side), please follow the gesture shows on the next page to make sure that the hook returns to its proper postion before installing the battery.

Battery hook at correct position



Battery hook stocks



Pull the battery switch back to LOCK so the battery hook is back to its proper position.



Gently push the battery hook back to its proper position.

