

**[Release Note] Dragon Center**

This document applies to all MSI Notebook and Vortex product which supports Dragon Center.

To know whether the product supports Dragon Center or not, please visit [MSI website](#) and find the Overview page (Control) of your product.

This document provides update history of Dragon Center, find the key changes for each version and refer to the [clean installation guide](#) to update the latest Dragon Center.

If you want to update MSI Help Desk and Battery Calibration tool, choose one between methods shown below since Dragon Center installer will not update MSI Help Desk and Battery Calibration altogether if they're already installed on the system.

- Download the stand-alone MSI Help Desk and Battery Calibration installer from MSI website and run the installation individually.
- Uninstall the MSI Help Desk and Battery Calibration from the system and run the Dragon Center installer afterward.

**Dragon Center Update History**

1.2.1804.1201

[MSI Help Desk 1.0.1802.0501](#), [Battery Calibration 1.0.1609.1901](#)

- Bug Fix: When VR Ready is set to off, SHIFT will no longer switch to Turbo automatically when an HMD device is connected.

1.2.1802.0501

[MSI Help Desk 1.0.1802.0501](#), [Battery Calibration 1.0.1609.1901](#)

- Update the APP download QR code for Dragon Dashboard.
- Update Help Desk version to 1.2.1802.0501.
- Remove X Boost to improve the system stability.

1.2.1801.2401

[MSI Help Desk 1.0.1707.2501](#), [Battery Calibration 1.0.1609.1901](#)

- Fix the power option set abnormally when the system switches between AC and DC mode.

1.2.1801.1701

[MSI Help Desk 1.0.1707.2501](#), [Battery Calibration 1.0.1609.1901](#)

- The GPU fan speed can now show correctly in the System Monitor's mini mode.

1.2.1711.2101

[MSI Help Desk 1.0.1707.2501](#), [Battery Calibration 1.0.1609.1901](#)

- Fix Dragon Center doesn't launch on Workstation models.
- Fix the USB LED doesn't light up.

1.2.1710.1301

[MSI Help Desk 1.0.1707.2501](#), [Battery Calibration 1.0.1609.1901](#)

- Update X Boost (Active X: 1.0.0.13).
- Fix mobile phones can't connect to Vortex G25 8RE/8RD properly.

1.2.1709.1101

[MSI Help Desk 1.0.1707.2501](#), [Battery Calibration 1.0.1609.1901](#)

- Fix the missing Turbo mode option in SHIFT on CPU OC support models with the Turkey language Windows system.
- Supports Coffee Lake CPU OC.

1.2.1708.1401

[MSI Help Desk 1.0.1707.2501](#), [Battery Calibration 1.0.1609.1901](#)

- Supports new model "Vortex G25 8RE/8RD" overclock and LED control functions.
- VR Ready windows will fade out after few seconds when it is set to disable.

1.2.1707.2501

[MSI Help Desk 1.0.1707.2501](#), [Battery Calibration 1.0.1609.1901](#)

- Update MSI Help Desk.
- Change the function behavior when VR Ready is set to disable, the Steam VR program doesn't launch automatically.

1.2.1706.1501

[MSI Help Desk 1.0.1706.1901](#), [Battery Calibration 1.0.1609.1901](#)

- Fix Nahimic mode in profile setting page will automatically synchronized with the settings in Nahimic control panel.
- Fix Dragon Center shows blurry icon in the notification area under certain cases when an external monitor is connected.
- Help Desk will be updated automatically when updating Dragon Center.

1.2.1705.3101

[MSI Help Desk 1.0.1704.1801](#), [Battery Calibration 1.0.1609.1901](#)

- Update the logo color design for Workstation and the Prestige Series.

1.2.1705.1801

[MSI Help Desk 1.0.1704.1801](#), [Battery Calibration 1.0.1609.1901](#)

- Fix Dragon Center can't be opened even when it is installed properly on Brazilian language (Portuguese) system.

1.2.1705.1201

[MSI Help Desk 1.0.1704.1801](#), [Battery Calibration 1.0.1609.1901](#)

- Fix the Fan Speed control doesn't work as expected under specific conditions.
- Fix Nahimic VR audio effect doesn't work properly.

1.2.1704.2601

[MSI Help Desk 1.0.1704.1801](#), [Battery Calibration 1.0.1609.1901](#)

- All configuration files will be deleted together when running Dragon Center uninstaller.
- Update X Boost (Active X: 1.0.0.12).
- Fix multi-language display error in introduction page.

1.2.1704.0701

[MSI Help Desk 1.0.1703.1001](#), [Battery Calibration 1.0.1609.1901](#)

- Set the SHIFT to Turbo Mode by default for VR ONE.
- LED Wizard supports keyboard backlight color and color mode adjustment on models which support full-color backlight keyboard.
- Correct the typo of the DragonCenter\_Updater file created in the system temp file.
- Support Workstation series with default backlight color blue as default.

1.2.1703.2001

[MSI Help Desk 1.0.1703.1001](#), [Battery Calibration 1.0.1609.1901](#)

- Support Nahimic VR.
- Update X Boost (Active X: 1.0.0.11).
- Support individual switch to control Nahimic, True Color, LED Wizard and MSI RGB function in System Tuner.
- MSI RGB now works properly when the system reboots.
- System Tuner > Fan Speed > "Cooler Boost" option now works the same as the quick launch key "Cooler Boost" button.
- Fix Vortex LED light bar lights red after system wakes up from sleep mode or after reboot.
- Fix X Boost option randomly disappears from the System Tuner tab.
- Fix Windows key randomly stops working after restoring default settings for custom profiles.

(For NVIDIA Optimus supported models only, e.g. GE72VR)

- Fix automatic graphics switch fail to work and the NVIDIA graphics is always running (the

power LED always lights color amber).

(For manually graphics switchable supported models only, e.g. GT73VR)

- Fix Dragon Center crash when clicking on the System Monitor tab under iGPU mode.

#### 1.2.1701.1101

[MSI Help Desk 1.0.1611.1601](#), [Battery Calibration 1.0.1609.1901](#)

- Update X Boost (Active X: 1.0.0.10).
- Support Workstation models.
- The Cooler Boost option in Fan Speed section under System Tuner tab now works properly.
- Fix Dragon Center crashes if the main windows of Dragon Center is closed while the minimized windows of the System Monitor is turned on.
- The on screen display icon will show correctly with all five SHIFT modes when switching between different modes.
- Fix the display brightness shows abnormal when switching different TrueColor view modes under specific user scenarios.

#### 1.2.1610.2701

[MSI Help Desk 1.0.1609.3001](#), [Battery Calibration 1.0.1609.1901](#)

- The Windows Security warning message will not show up when performing a clean installation.
- Update Intel XTU 6.2.0.14.

#### 1.2.1610.1801 <sup>Beta</sup>

[MSI Help Desk 1.0.1609.3001](#), [Battery Calibration 1.0.1609.1901](#)

- GPU and VRAM frequency will not be overclocked on notebooks which don't support overclock. (CPU/GPU overclock is only available on the system that comes with Intel i7-6820HK (unlocked) processor)
- X Boost is disabled by default.
- X Boost option now shows correctly in System Tuner tab.
- Update Intel XTU 6.2.0.10.

#### 1.2.1609.0602

[MSI Help Desk 1.0.1609.0501](#), [Battery Calibration 1.0.1607.1801](#)

- Fix hard disk performance drops after system resumes from sleep.
- Modify CPU ratio for Vortex model.
- Update MSI Help Desk.

#### 1.2.1608.2201

[MSI Help Desk 1.0.1608.2301](#), [Battery Calibration 1.0.1607.1801](#)

- Rename “User Mode” to “Power Options” in SHIFT.
- Fix SHIFT shows in System Tuner page is different from the icon shows up when pressing Fn+F7.
- Update MSI Help Desk.

#### 1.2.1608.0401

*MSI Help Desk 1.0.1605.0601, Battery Calibration 1.0.1607.1801*

- Add warning message for overclock setup.

#### 1.2.1607.2701

*MSI Help Desk 1.0.1605.0601, Battery Calibration 1.0.1607.1801*

- Fix LED keyboard backlight works abnormally after system resumes from sleep.
- Fix wrong CPU ratio settings under Turbo mode for Vortex.

#### 1.2.1607.1901

*MSI Help Desk 1.0.1605.0601, Battery Calibration 1.0.1607.1801*

- Adjust default GPU overclock settings for GTX 1080 graphics.
- Update Battery Calibration.

#### 1.2.1607.1101

*MSI Help Desk 1.0.1605.0601, Battery Calibration 1.0.1508.1001*

- Support GPU overclock function.
- Support X Boost feature.
- Fix Nahimic 2 & GeForce Experice cannot run properly from App Protal.
- Include Battery Calibration and MSI Help Desk in Dragon Center installation file.

#### 1.1.1606.0802

- Remove VR Ready option for non VR Ready models.
- Add AdobeRGB to True Color view mode support for specific panel.
- Fix LED light bar works abnormal after the system resumes from sleep/hibernate.

#### 1.0.1604.0101

- Adjust default CPU ratio to improve CPU overclock performance for SHIFT.
- Fix user interface gets cut off on certain multi-language operating system.

#### 1.0.1603.0301 / 1.0.1602.1902

- Fix the fan control function doesn't work properly.
- Support Vortex CPU(7-6700K, i5-6600K) overclock.
- Fix the connection error with Dragon Dashboard on mobile devices.
- Fix LED light bar works abnormally on Vortex.



## MSI Help Desk Update History

### 1.0.1802.0501

- Update the Polish UI text in System Export window.
- Update the Windows OS build in the exported system information file.

### 1.0.1707.2501

- Update MSI logo icon.
- Modified the output format for the HDI version.

### 1.0.1706.1901

- Optimized system information export function.

### 1.0.1704.1801

- Help Desk desktop shortcut will not be created after the installation.

### 1.0.1703.1001

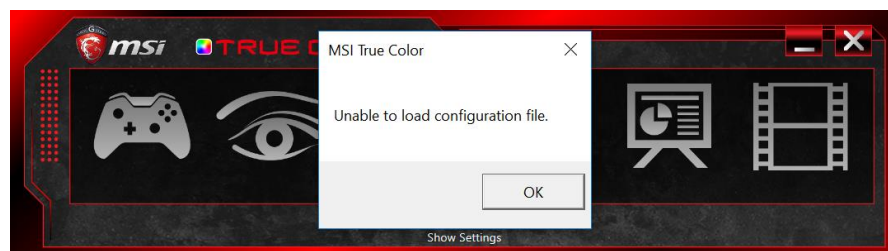
- Add Push Notification Service for important information.
- Add Windows hotfix list in the export system information.

### 1.0.1611.1601

- Disable the FAQ popup notification.

### 1.0.1609.3001

- Fix MSI Help Desk misleads the update for MSI TrueColor and cause MSI TrueColor stops working and shows error message “Unable to load configuration file”.



## MSI Battery Calibration Update History

### 1.0.1609.1901

- Supports VR ONE 6RD / 6RE.