

[How To] Enable TPM 2.0

Most MSI Notebook that supports Windows 10 system already set the TPM 2.0 "Enabled" by default. If the TPM 2.0 device isn't detected in the system, follow the steps below to manually enable TPM.

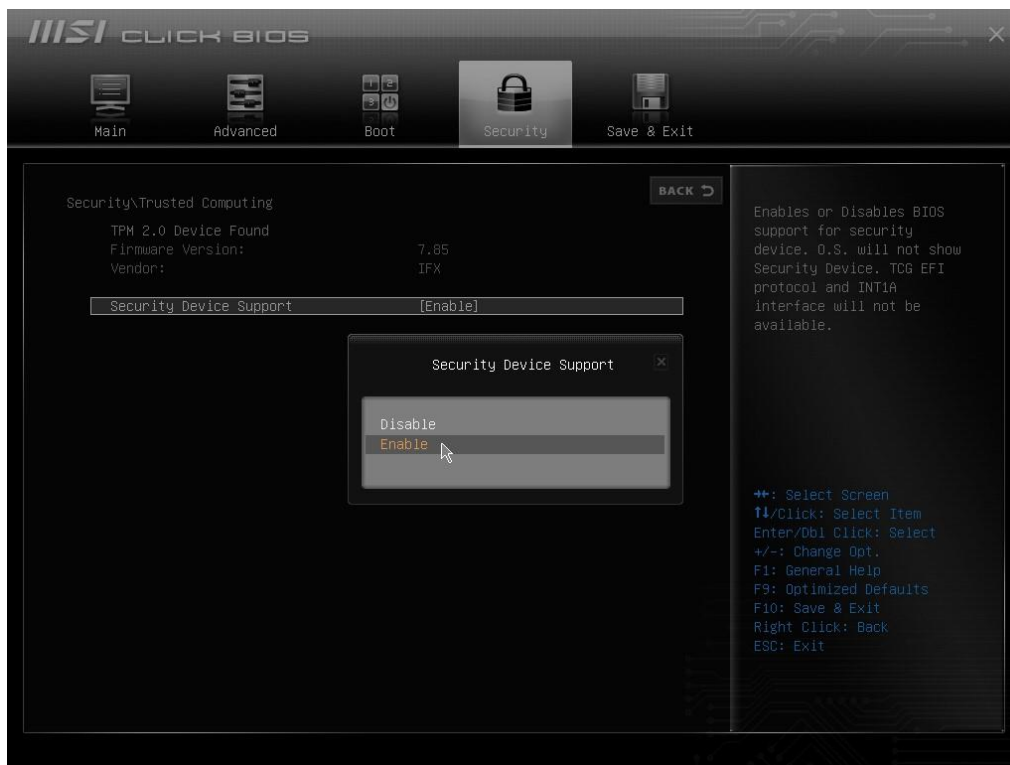
Before starting...

- Keep the AC power connected during the whole update process.

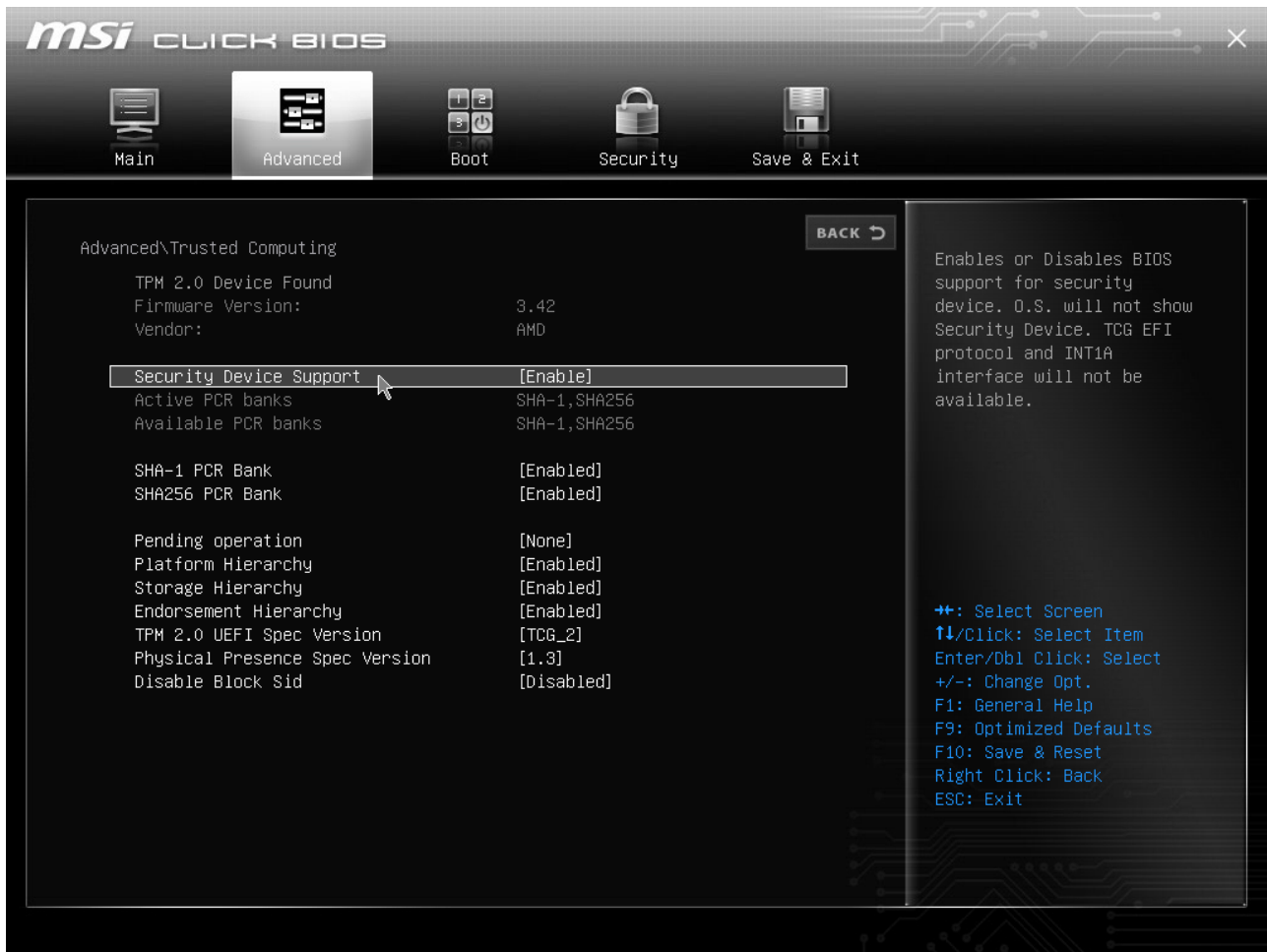
I. Enable TPM 2.0 in BIOS menu

1. Power on the system and press the "Delete" button continuously when the MSI logo shows up to enter the BIOS menu.
2. Select the "Security" or "Advanced" page and find the option "Trusted Computing".

Security Page >> Trusted Computing



Advanced Page >> Trusted Computing



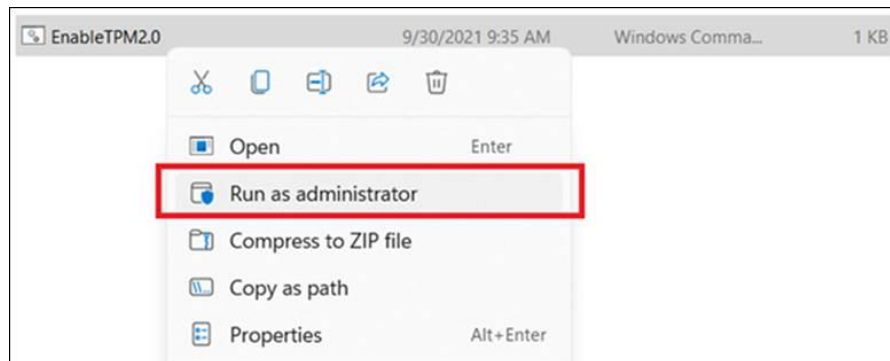
3. Click on Trusted Computing and set the "Security Device Support" option to "Enabled" to enable the TPM.

4. Press "F10" and select "Yes" to save the changes and reset the system.

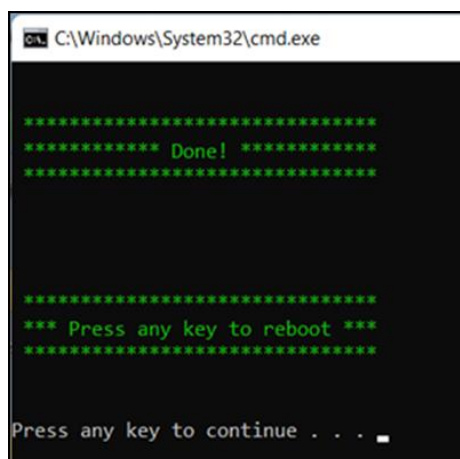
***Note: If the Trusted Computing option doesn't exist in both Security or Advanced page, continue with method II to run the "TPM Enable Tool".**

II. Run TPM Enable Tool to enable the TPM2.0

1. Download EnableTPM Tool and extract the package.
https://download.msi.com/uti_exe/nb/TPM%20Enable%20Tool.zip
2. Right click "EnableTPM2.0" and run as administrator



3. Press any key to reboot the device.



4. Once complete, enter the BIOS menu and check whether the "Trusted Computing" appears and has been set "Enabled" under "Security" or "Advanced" page.

Related Topics:

[\[How To\] Check Windows 11 Compatibility](#)

[\[Windows 11\] Preparation Before Upgrade](#)