

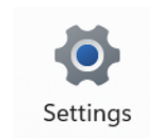
## [How To] Return to Windows 10

For Windows 11 upgrade system, Microsoft provides a 10 days system restore option. After 10 days, the system return option will no longer be available, and a clean installation of Windows 10 or use the system backup file created from MSI software (MSI Center/MSI Center Pro/MSI Dragon Center/MSI Creator Center) to restore the system back to the factory settings can help to return the system back to the original Windows 10.

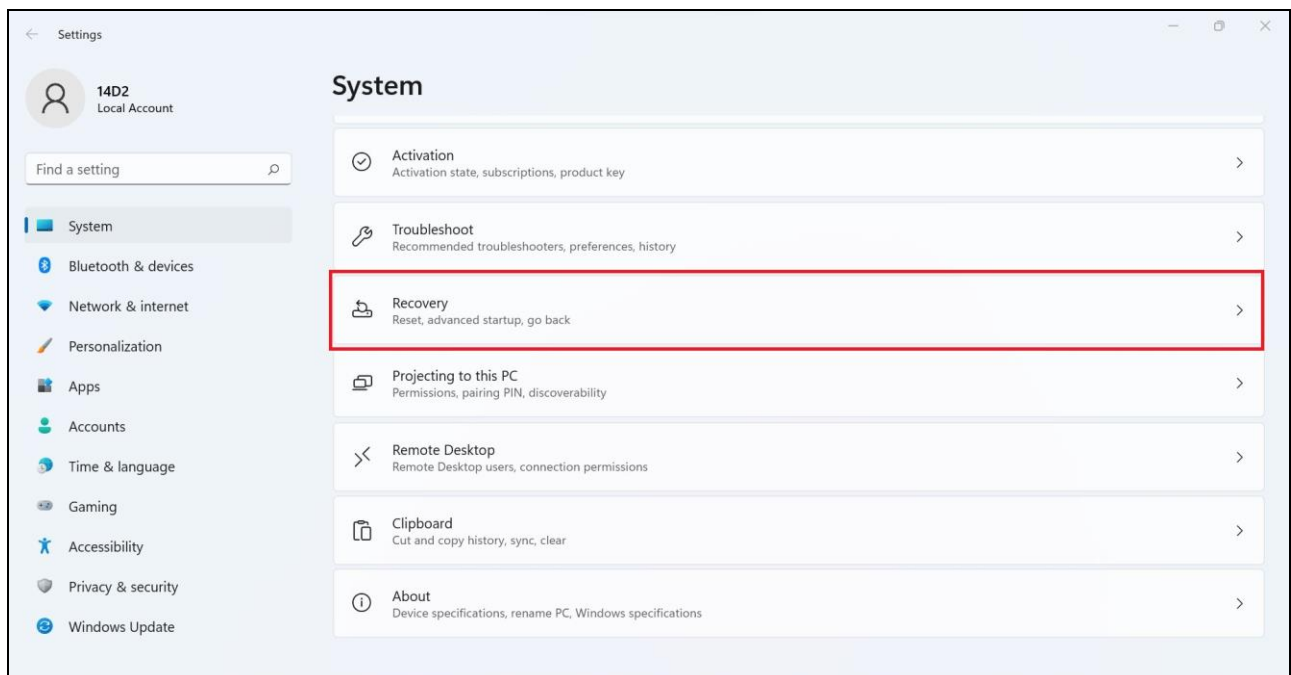
**\*Note: The backup function supports MSI Notebooks pre-installed with Windows 10 system only.**

## Return to Windows 10 with the Recovery option

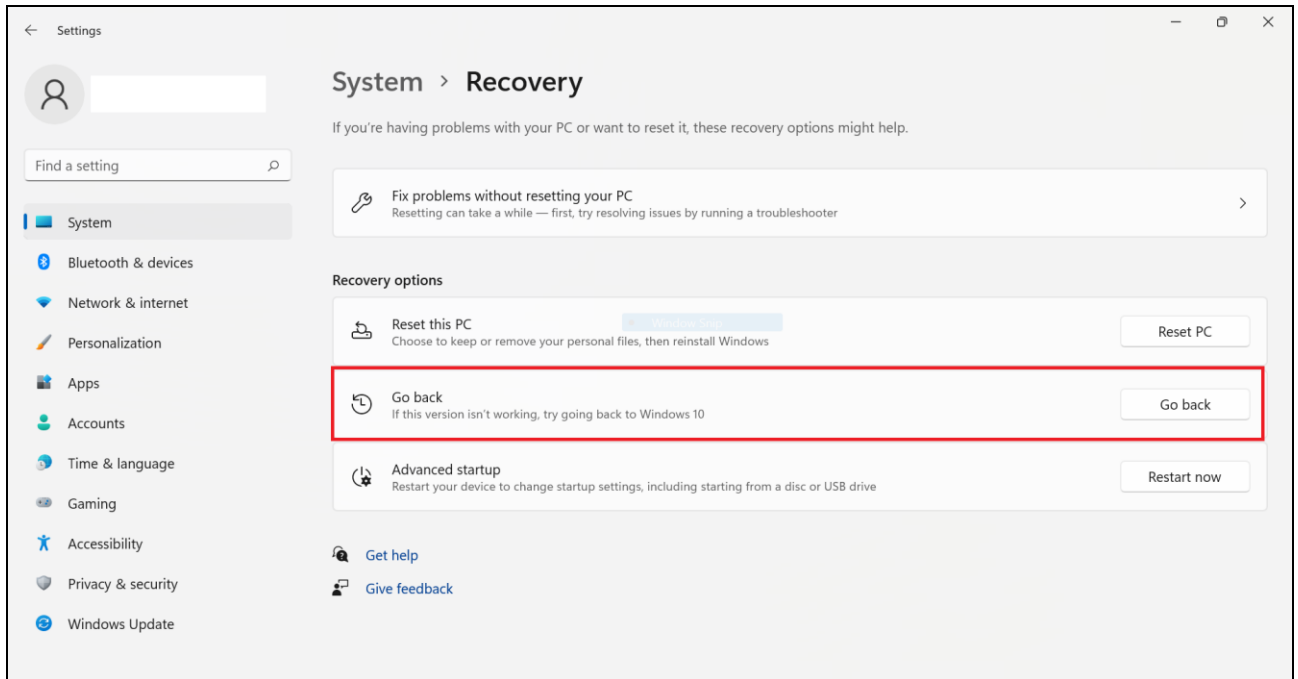
1. Click on Windows  and select “Settings”



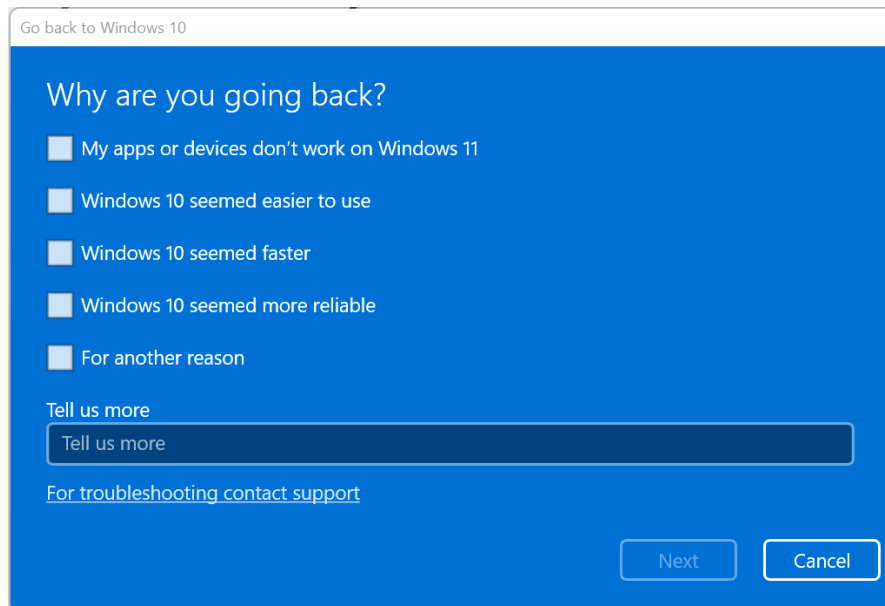
2. Find the “Recovery” option on the “System” page



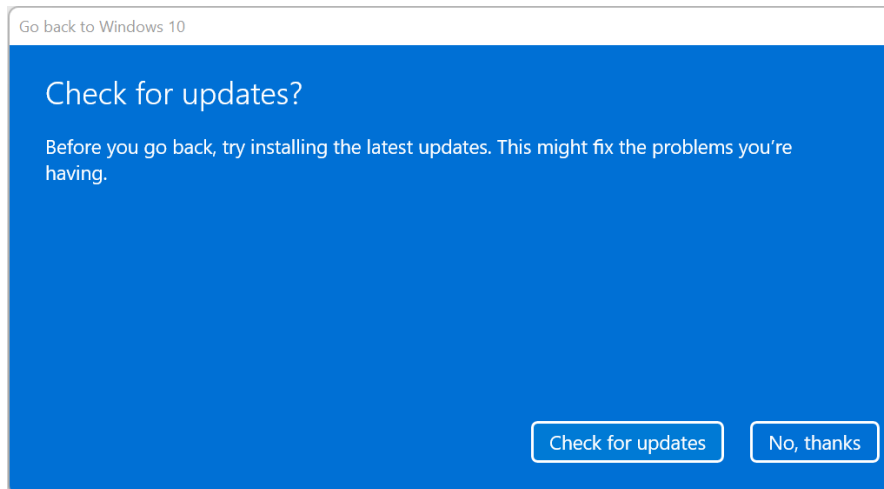
### 3. Click on “Go back” to roll the system back to Windows 10



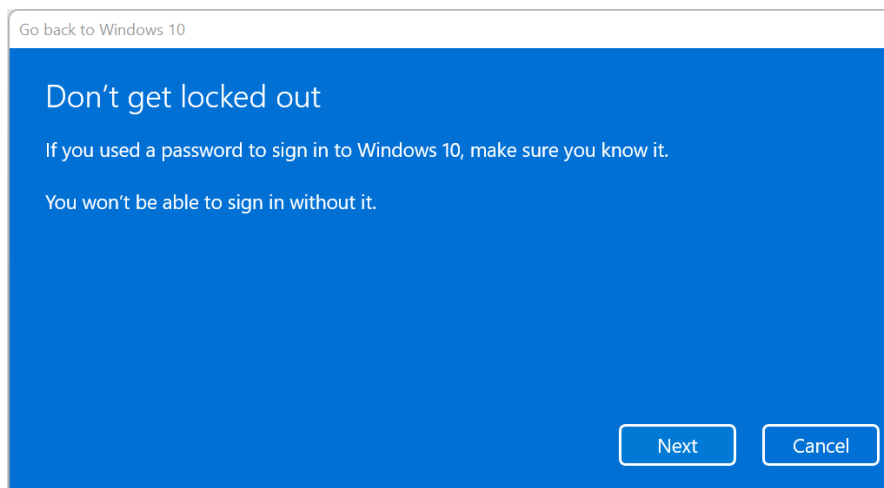
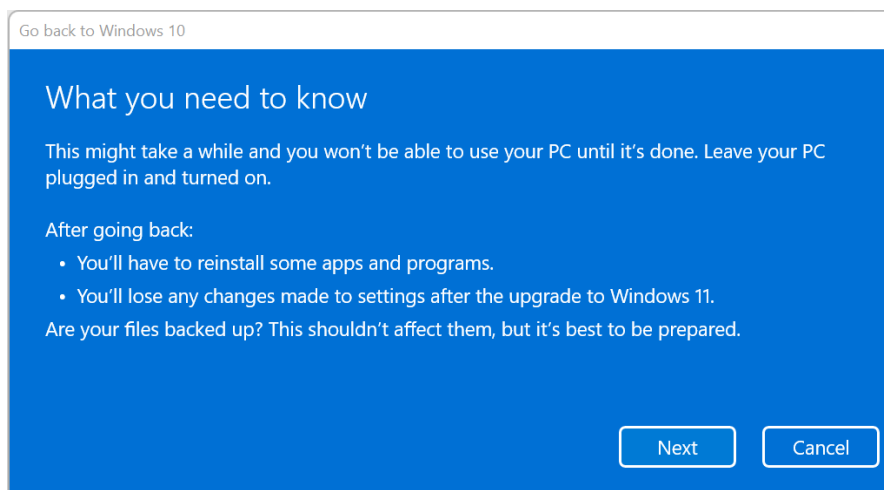
### 4. Choose a reason for the downgrade



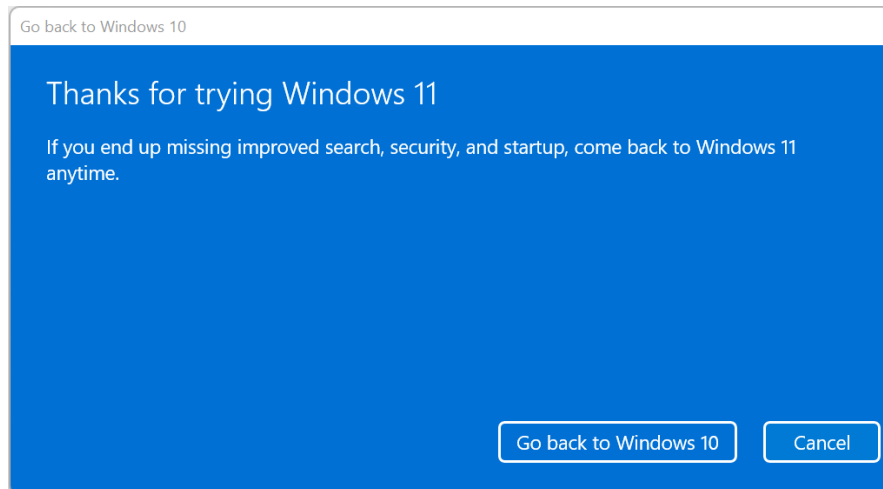
## 5. Choose “No, thanks” to continue



## 6. Refer to the on screen instructions and select “Next” to continue



7. Click “Go back to Windows 10” to return.



## Restore the system back to the factory settings

**\*Note:** The backup function supports MSI Notebooks pre-installed with Windows 10 system only. If the original system has been wiped out or modified before creating the system backup file, there are high chances that the restore might fail to work and require a clean installation of the Windows 10.

- Notebooks that bundled with MSI Center/MSI Dragon Center/MSI Creator Center, follow the [instructions](#) in Section III to restore the system back to the factory settings by using the recovery/backup file that has been created before the update.
- Notebooks that bundled with MSI Center Pro, follow the [instructions \(tutorial\)](#) to restore the system by using the recovery disk.
- Perform the [F3 system recovery](#) to restore the system back to the factory settings.

## Windows 10 Clean Installation

If the system originally doesn't have the MSI pre-installed system, follow the [instructions](#) to perform a clean installation to get the Windows 10 system back.