

A large, stylized red dragon logo is positioned on the left side of the slide. The dragon is depicted in a dynamic, coiled pose, facing right. It has sharp horns, a fierce expression, and its body is intricately detailed with flame-like patterns. The entire logo is rendered in a vibrant red color with a slight glow effect against the black background.

**msi**<sup>®</sup>

# Update BIOS by M-Flash

2017/June

**Beast IT**

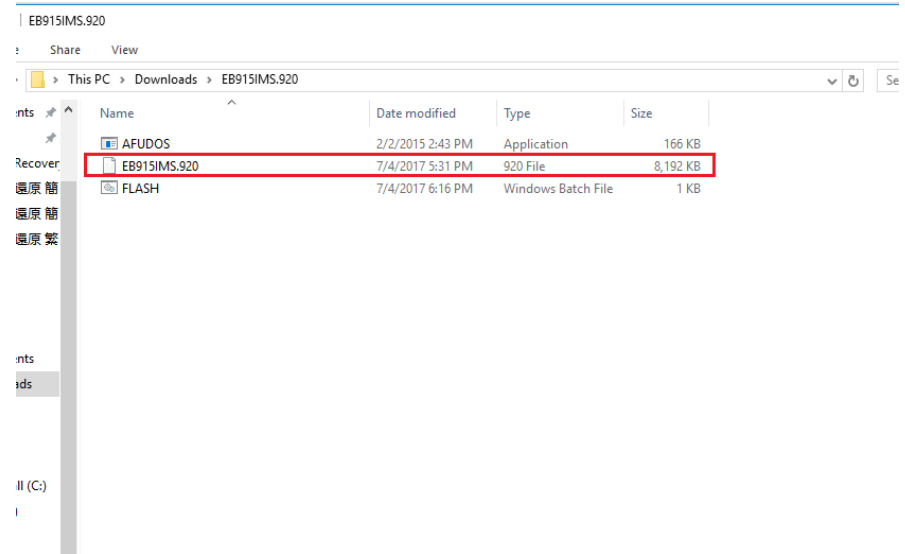
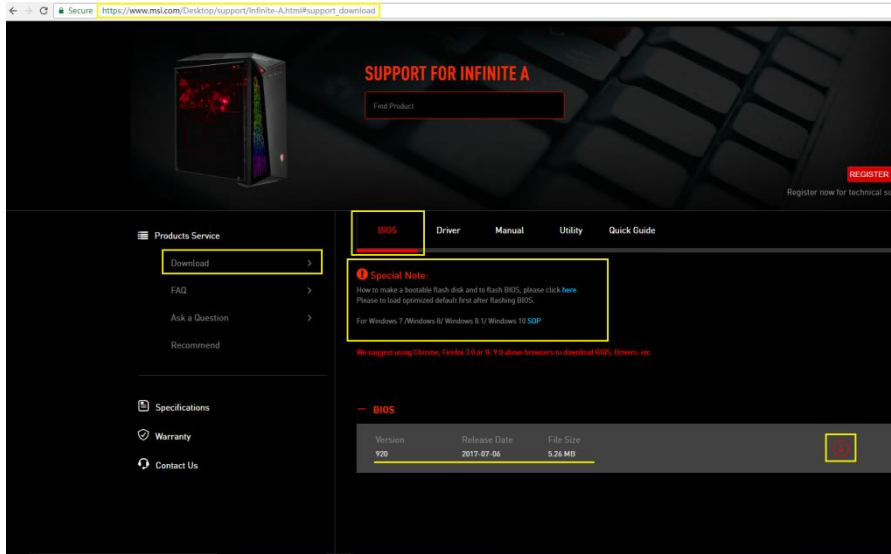
TOP PLAYER · TOP CHOICE

MSI  GAMING

# Step 0



- 1.Prepare an USB or portable storage device.
- 2.Download and unzip the BIOS files from MSI webpage. (There is a Special Note for updating BIOS under Dos mode for reference.)
- 3.Copy the BIOS file into your device directory(root). As the picture below, there is only one file you have to copy.



# Step 1



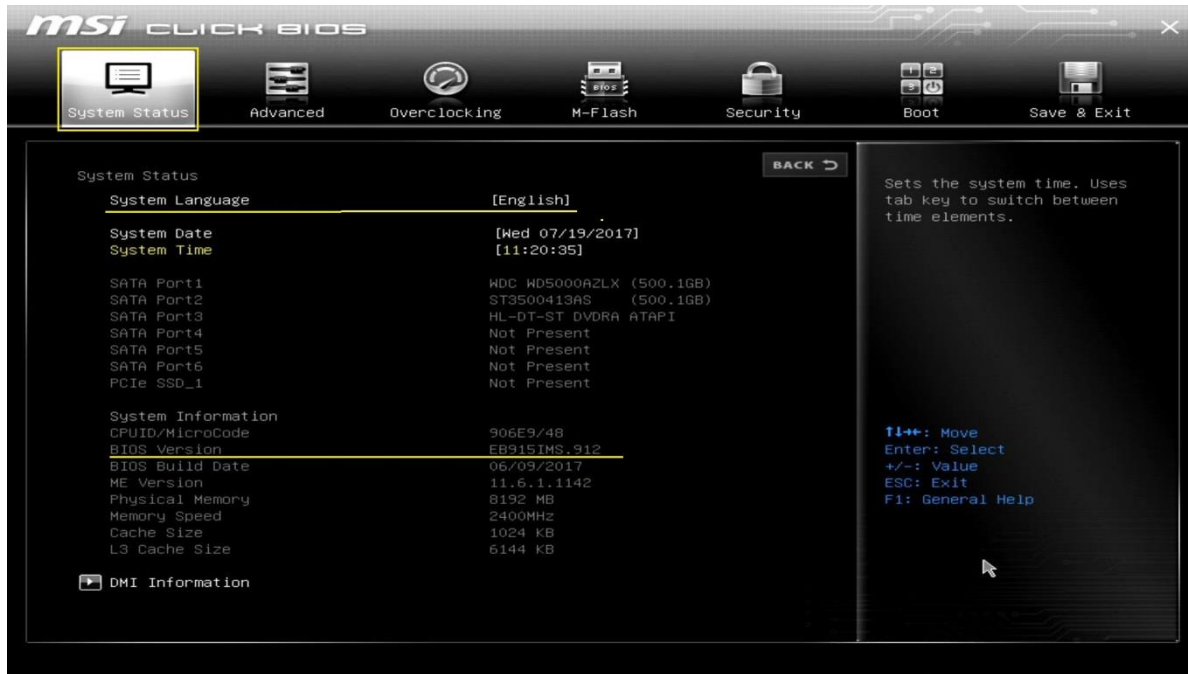
Reboot / Turn on your computer, hitting the Del key when the boot screen shows up. You will get into the BIOS configuration screen.



# Step 2

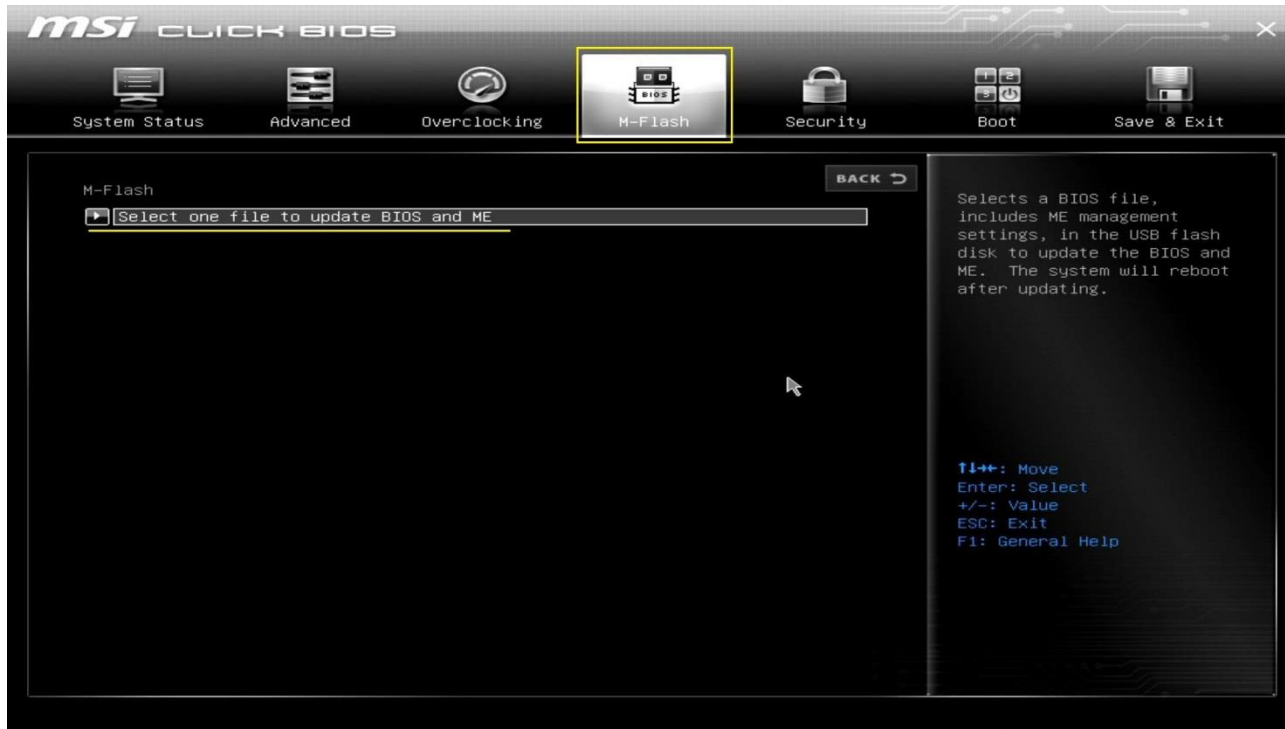


1. Configure the system language to which you prefer.
2. Check the current BIOS version is 912



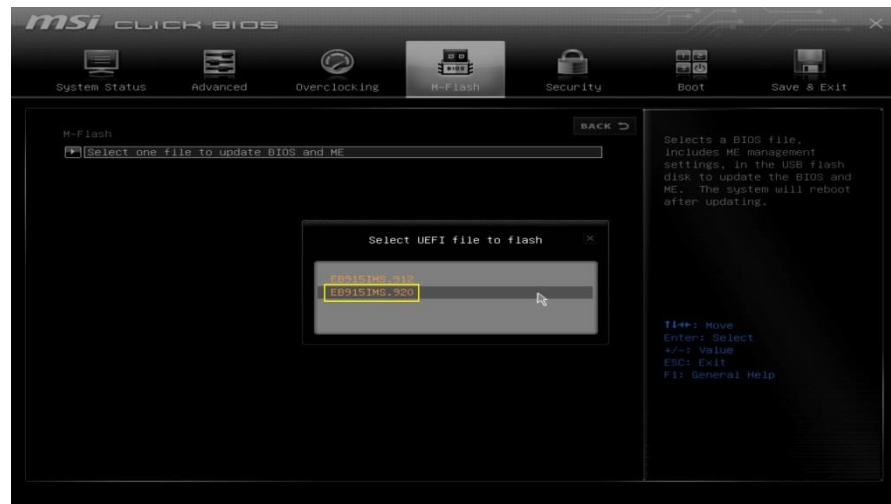
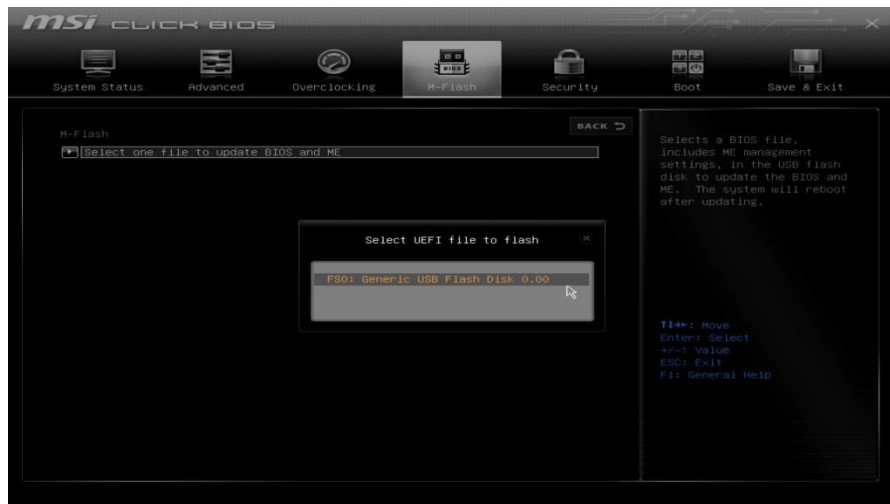
## Step 3

Get the M-Flash page and click “Select one file to update BIOS and ME” .



# Step 4

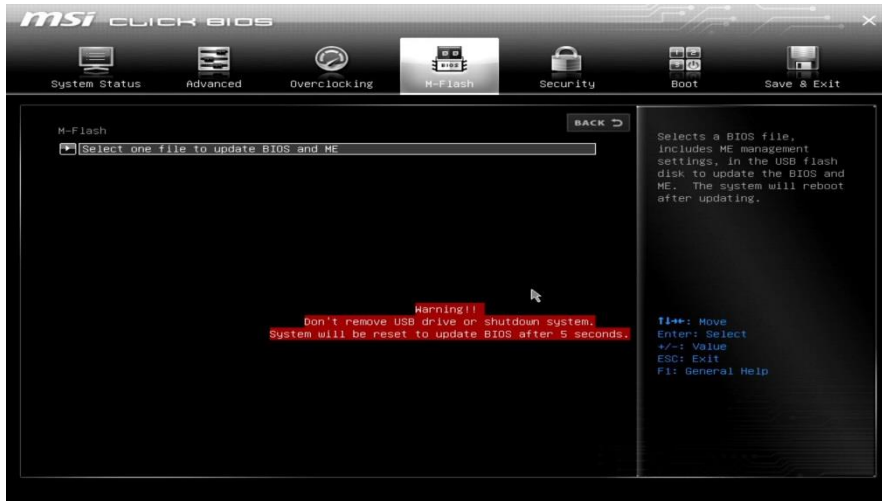
1. Select and click your device
2. Select and click the targeting BIOS file (v920) we just copied.



# Step 5



**Important** : Do **NOT** remove your device during the two phases to avoid motherboard crash.



# Step 6



After a reboot, hitting Del. Key to check the BIOS version. Now is v920.

The screenshot shows the MSI Click BIOS interface. The top navigation bar includes: System Status, Advanced, Overclocking, M-Flash, Security, Boot, and Save & Exit. The main content area is divided into two panes. The left pane shows the 'System Status' section with the following data:

System Language	[English]
System Date	[Wed 07/19/2017]
System Time	[11:24:24]
SATA Port1	WDC WD5000AZLX (500.1GB)
SATA Port2	ST3500413AS (500.1GB)
SATA Port3	HL-DT-ST DVDR A ATAPI
SATA Port4	Not Present
SATA Port5	Not Present
SATA Port6	Not Present
PCIe SSD_1	Not Present
System Information	
CPUID/MicroCode	906E9/48
BIOS Version	EB915IMS_920
BIOS Build Date	07/04/2017
ME Version	11.6.1.1142
Physical Memory	8192 MB
Memory Speed	2400MHz
Cache Size	1024 KB
L3 Cache Size	6144 KB

Below the System Information section is a 'DMI Information' section with a right-pointing arrow icon. The right pane contains a help text for the 'System Date' field: 'Sets the system date. Uses tab key to switch between date elements.' At the bottom of the right pane, navigation instructions are listed: 'F1++: Move', 'Enter: Select', '+/-: Value', 'ESC: Exit', and 'F1: General Help'. A 'BACK' button with a right arrow is located at the top right of the main content area.



***msi***<sup>®</sup>

**NO. 1 IN *G*AMING**

Thank You Very Much for Your Attention