

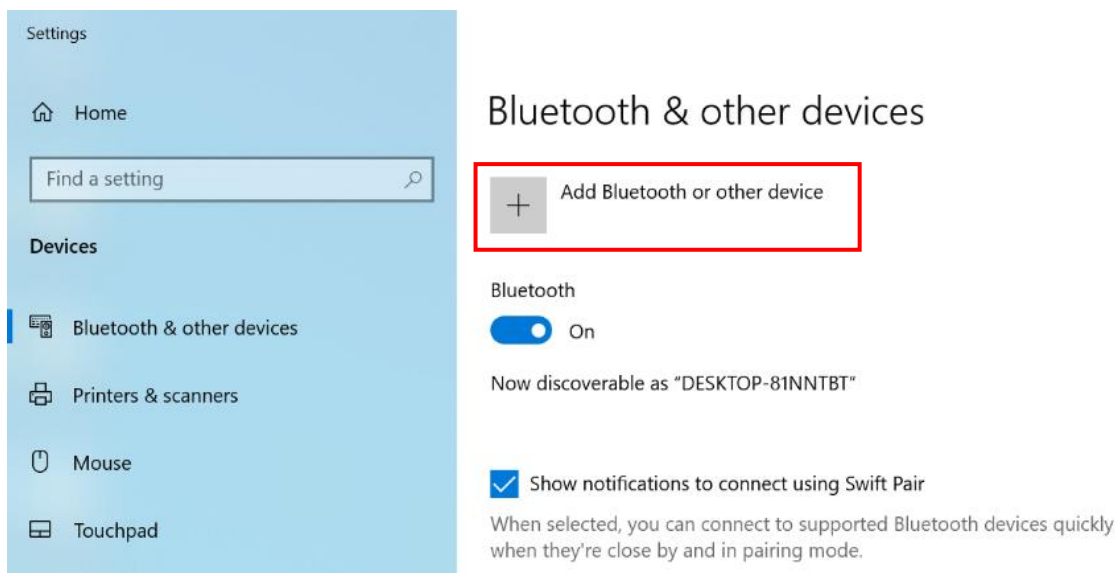
[Product Information] MSI Pen

MSI Pen helps everyday standard and office work (e.g. documenting, drawing, and note-taking...etc.) easier, more intuitive, and precise. Moreover, MSI Pen provides "Presentation Mode" and "Power Status Notification" which give the user greater support.

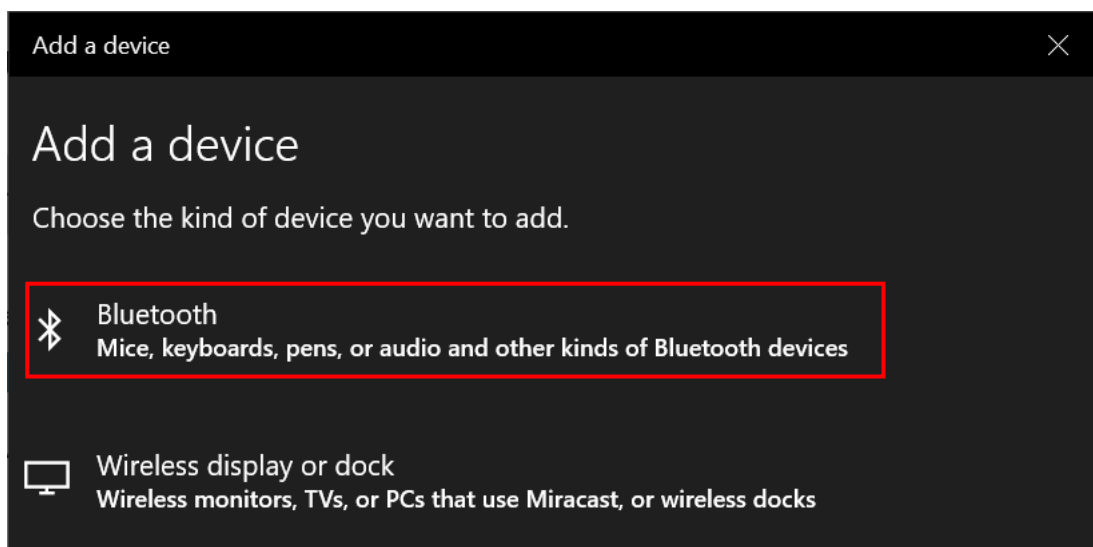
This guide shows how to setup MSI Pen and how Presentation Mode and Power Status Notification can be used.

MSI Pen Setup

1. Select Windows icon > Settings.
2. In Devices > Bluetooth & other devices tab, select "Add Bluetooth or other device".



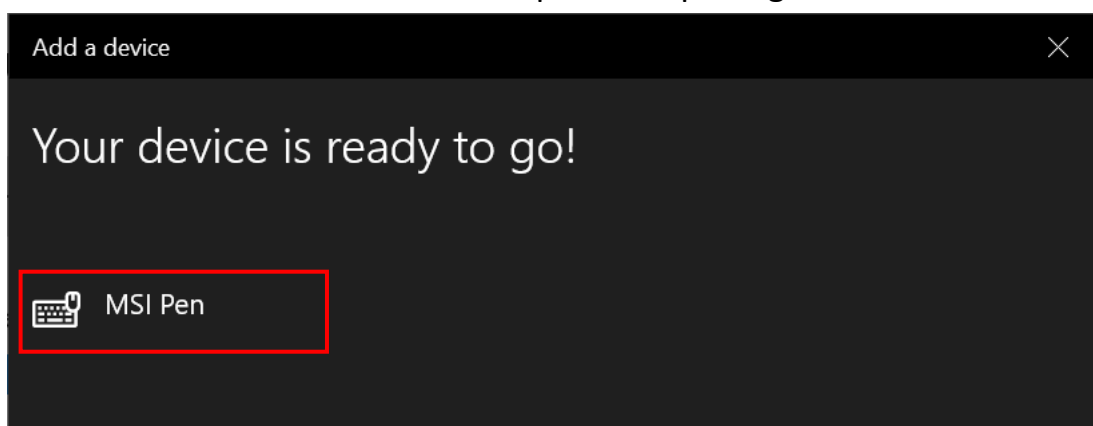
3. Select "Bluetooth" device.



4. Have the MSI Pen next to the laptop, then press the button located at the very top of the Pen (see the picture below) and hold for at least 7 seconds.



5. Wait until the MSI Pen device shown on the device list.
6. Click on the MSI Pen device to complete the pairing.



***Note:** If the MSI Pen isn't paired to the system, some exclusive features such as Presentation Mode will not work properly.

Presentation Mode

MSI Pen provides "Presentation Mode" which transform the MSI Pen as a Presentation Remote and can used to control slides remotely with simple click and double clicks on the Pen.

Before Starting...

Visit the product download page on MSI website and under Utility page, download and install "MSI Pen Control" application.

(If the system is bundled with a pre-installed system, skip the install process)

Simply launch the power point slides (or other presentation program), then the presentation mode will be switched ON automatically.

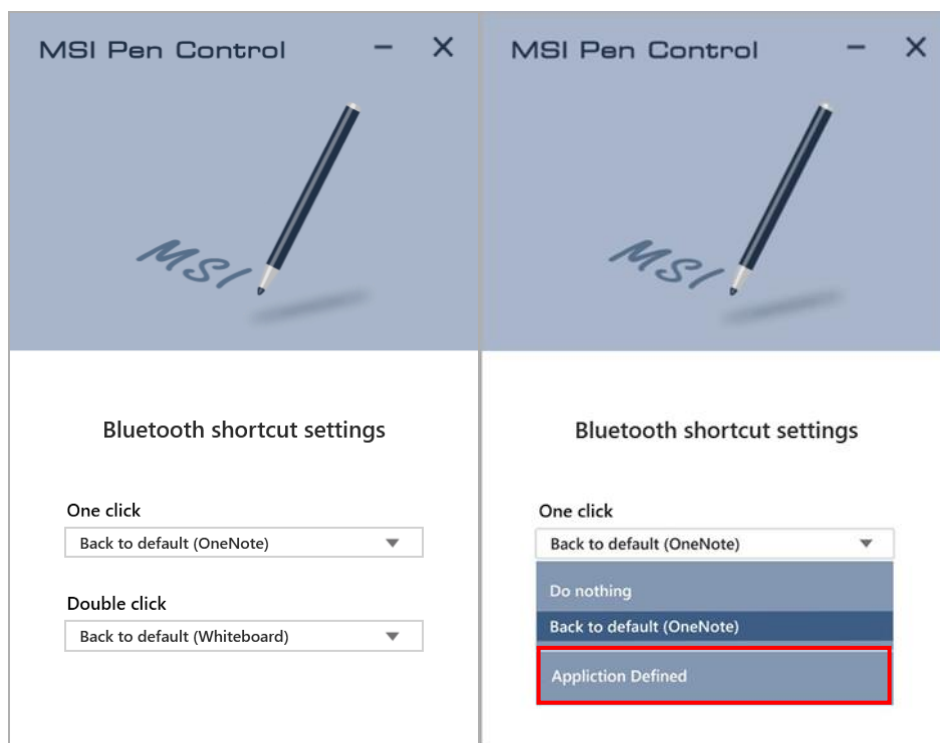
- One Click on the button goes to the next slide.
- Double Click on the button returns to the previous slide.

MSI Pen Control

MSI Pen Control provides advanced configuration for the Click/Double Click events on the Pen device.

To setup a shortcut key to launch a specific program, follow the steps below.

1. Launch "MSI Pen Control" by entering "MSI Pen Control" in the search column and press enter.
2. Change the default setting to "Application Defined".



3. Select the ".exe" file of the program which preferred to be set as the quick launch program.

Power Status Notification for MSI Pen

MSI Pen provides an easy way to check the remained battery capacity.

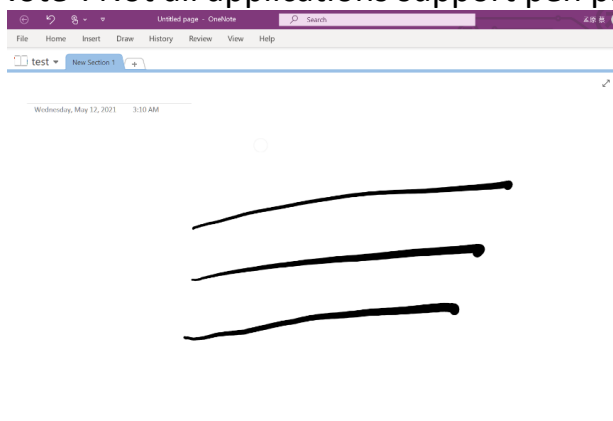
1. Download and install the MSI Pen Control application first.
2. Make sure MSI Pen Control application is running in the background, then holding the MSI Pen and long-press it onto the touch screen (approx. 2 sec).
3. On the Windows system tray, a pen icon with the battery capacity will then show up shortly.



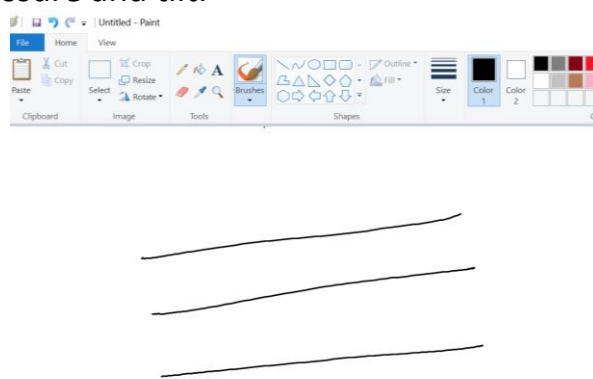
Pressure Sensitivity and Tilt Support

MSI Pen supports up to 90~76 ° tilt angle and 4096 levels of pressure sensitivity for creators to draw intuitively and have the stylus experience like a real pencil. When using an application that supports pen pressure and tilt, it allows to tilt for shading or control pressure for sketching different thicknesses of lines.

Note¹: Not all applications support pen pressure and tilt.



Pen pressure & tilt supported



Unsupported

Note²: Only certain applications allow users to adjust pressure sensitivity, visit the third-party software website for the details of pressure sensitivity settings. (e.g. [Corel Painter](#))