

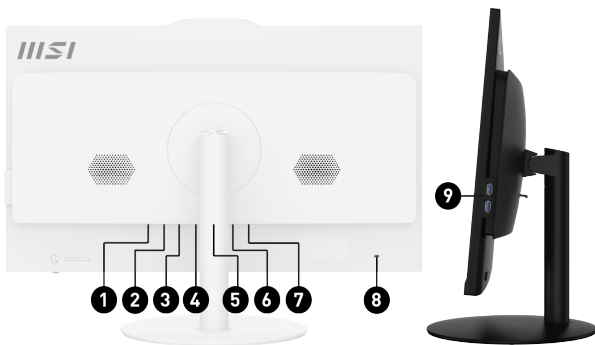
Be Your Window To The World



Picture and logos

SELLING POINTS

- Windows 11 Home - MSI raccomanda Windows 11 per il mondo Business
- Pannello IPS da 27" con risoluzione FHD
- Fino ai processori Intel® Core™ i7-13700 Raptor Lake
- Tecnologie MSI anti-sfarfallio e di riduzione della luce blu
- Webcam FHD integrata
- Ampio angolo di visione di 178°
- Software Tobii Aware per la privacy
- Software MSI Cloud Center
- Connettività Wi-Fi 6E
- Massima sicurezza con il modulo TPM
- Sistema Audio DTS
- Sistema di raffreddamento Silento PRO Cooling



1. DC Jack
2. 1x HDMI™ out (2.0b)
3. 1x DP out (1.4)
4. 1x RJ45
5. 1x USB 3.2 Gen 2 Type-A/ 1x USB 3.2 Gen 2 Type-C
6. 2x USB 3.2 Gen 1 Type A
7. 1x Mic-in/ 1x Line-out
8. 1x Kensington lock
9. 2x USB 2.0 Type-A

SPECIFICATION

Operating Systems	Operating Systems	N/A
Barcode Info	EAN	4711377097239
Model	Part No	9S6-AF8311-405
	MKT Name	PRO AP272 13M
	MKT Spec	PRO AP272 13M-405IT
	Color	ID1/Black-Black-Black
Display	Screen Size	27" (69 cm)
	Active Display Area (mm)	597.88(H)X336.312(V)
	Curvature	Flat
	Panel Type	IPS
	Resolution	1920x1080 (FHD)
	Pixel pitch	0.2745(H)x0.2745(V)
	Brightness (nits)	250
	Contrast Ratio	1000:1
	Signal Frequency	N/A
	Response Time (GTG)	14ms
	View Angles	178°(H)/178°(V)
	Surface Treatment	Anti-Glare
	Touch Screen	Non-touch
Display Colors	16.7M	
I/O Ports	Lock type	Kensington
Processor	CPU Number	Intel Core i5-13400
	CPU Clock	2.5GHz
	CPU Cores	10
	TDP	65W
	Cache	20 MB Intel® Smart Cache
	Threads	16
Chipset	Chipsets	H610
Discrete Graphics	GPU1 VRAM Size	N/A
	GPU1 VRAM Type	N/A
Memory	Memory Size	16GB(8GB*2)
	Memory Type	DDR4 SDRAM
	Memory Speed	1600(3200)MHz
	Module Type	SO-DIMM
	Memory Slot (Total/Free)	2/0
	Max Capacity	Max 64GB
Storage	SSD Size	512GB
	HDD1 Size	N/A
	SSD Config	512GB*1
	SSD Interface	PCIe GEN3x4 w/o DRAM NVMe
	SSD Form Factor	M.2-2280 M-KEY
	M.2 slots (Total/Free)	1/0
	HDD1 RPM	N/A
	HDD1 Form Factor	N/A
	HDD1 Interface	N/A
	3.5" Drive Bays (Total/Free)	0/
	2.5" Drive Bays (Total/Free)	1/1
	ODD(Type)	N/A
	ODD Height	N/A
ODD Type	N/A	
Communications	LAN	Realtek RTL8111H
	WLAN	INTEL/AX211.NGWG.NV
	WLAN Version	Wi-Fi 6E+BT
	BT Version	5.3
Audio	Audio Chipset	Realtek ALC897
	Audio Type	2.1 Channel HD Audio
I/O Ports (Front)	USB 2.0 Type A	2

I/O Ports (Rear)	USB 3.2 Gen 2 Type C (R)	1
	USB 3.2 Gen 2 Type A (R)	1
	USB 3.2 Gen 1 Type A (R)	2
	RJ45	1
	HDMI™ out	1x (v2.0)
	DP out	1x (v1.4)
Power	AC Adapter Output	120W
	Battery	N/A
	Battery Whrs	N/A
In The Box	Keyboard Interface	USB
	Mouse Interface	USB
	Power Cord	1
	AC Adaptor	1
	Warranty Card	1
	Quick Guide	1
	User Manual	N/A
	VESA Mount kit	N/A
	Keyboard	SK9626M
	Mouse	SM9023M
Input Device	WebCam	internal webcam
Regulatory Compliance	Operating, Storage Temperature	0° C ~ 35° C ; -20° C ~ 60° C
	Operating, Storage Humidity	0% ~ 85%;0% ~ 90%
	Regulatory Compliance	FCC(Class B), CB/CE, UL(CUL), BSMI, VCCI, RCM(C-Tick)
Design	Adjustment (Tilt)	-5°~20°(+/-2°)
	Adjustment (Swivel)	N/A
	Adjustment (Height)	N/A
	Adjustment (Pivot)	N/A
Product Dimension with Stand (WxDxH)	Product Dimension with Stand (WxDxH) (mm)	613.49 x 268.00 x 457.66
	Product Dimension with Stand (WxDxH) (inch)	24.15 x 10.55 x 18.02
Dimension & Weight	Weight (Net kg)	4.63
	Weight (Gross kg)	8
	Product Dimension with Holder (WxDxH) (mm)	N/A
	Product Dimension with Holder (WxDxH) (inch)	N/A
	Inside Carton Dimension with Holder (WxDxH) (mm)	N/A
	Inside Carton Dimension with Holder (WxDxH) (inch)	N/A
	Inside Carton Dimension with Stand (WxDxH) (mm)	696 x 218 x 490
	Inside Carton Dimension with Stand (WxDxH) (inch)	27.4 x 8.58 x 19.29
	Outer Carton Dimension with Holder (WxDxH) (mm)	N/A
Warranty	Warranty	N/A