

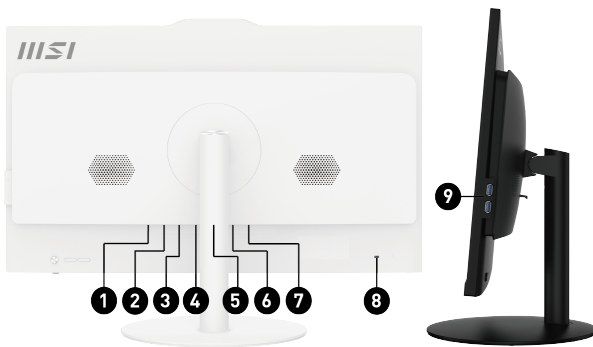
Окно в большой мир



Picture and logos

SELLING POINTS

- Windows 11 Домашняя- MSI рекомендует Windows 11 Pro для бизнеса
- 27" дисплей IPS-класса со светодиодной подсветкой и разрешением Full-HD (1920x1080 пикселей)
- Процессор до Intel® Core™ i7-13700 Raptor Lake и память DDR4
- Технологии защиты глаз: MSI Anti-Flicker и Less Blue Light
- Встроенная веб-камера с функцией Windows Hello повышает конфиденциальность и производительность пользователей
- Широкие углы обзора: 178°
- Программное обеспечение Tobii Aware для защиты конфиденциальности
- Приложение MSI Cloud Center позволяет организовать частное облачное хранилище для файлов с мобильных устройств (под управлением Android или iOS)
- Беспроводной модуль Wi-Fi 6E
- Программный TPM-модуль для защиты конфиденциальных данных
- Иммерсивные аудиоэффекты DTS Audio Processing
- Silent PRO Cooling: система охлаждения серверного класса для бесшумной и стабильной работы устройства
- DataSheet: Общие Характеристики серии PRO AP272 13M (pdf)



1. DC Jack
2. 1x HDMI™ out (2.0b)
3. 1x DP out (1.4)
4. 1x RJ45
5. 1x USB 3.2 Gen 2 Type-A/ 1x USB 3.2 Gen 2 Type-C
6. 2x USB 3.2 Gen 1 Type A
7. 1x Mic-in/ 1x Line-out
8. 1x слот замка Кенсингтона
9. 2x USB 2.0 Type-A

SPECIFICATION

| | | |
|-------------------|---|----------------------------------|
| Operating Systems | Operating Systems | Windows 11 Pro |
| | OS | PROFESSIONAL(WIN 11 PRO OLC OA3) |
| Model | Part No | 9S6-AF8312-440 |
| | MKT Name | PRO AP272 13M |
| | MKT Spec | PRO AP272 13M-440RU |
| | Color | ID1/White-White-White |
| Input Device | WebCam | internal webcam |
| I/O Ports | Lock type | Kensington |
| Processor | CPU Number | Intel Core i7-13700 |
| | CPU Clock | 2.1GHz |
| | CPU Cores | 16 |
| | TDP | 65W |
| | Cache | 30 MB Intel® Smart Cache |
| | Threads | 24 |
| Chipset | Chipsets | H610 |
| Memory | Memory Size | 16GB(8GB*2) |
| | Memory Type | DDR4 SDRAM |
| | Memory Speed | 1600(3200)MHz |
| | Module Type | SO-DIMM |
| | слотов памяти (Всего/Свободных) | 2/0 |
| | Max Capacity | Max 64GB |
| Discrete Graphics | GPU1 VRAM Size | N/A |
| | GPU1 VRAM Type | N/A |
| Storage | SSD Size | 512GB |
| | HDD1 Size | N/A |
| | SSD Config | 512GB*1 |
| | SSD Interface | PCIe GEN3x4 |
| | SSD Form Factor | M.2-2280 M-KEY |
| | M.2 slots (Total/Free) | 1/0 |
| | HDD1 RPM | N/A |
| | HDD1 Form Factor | N/A |
| | HDD1 Interface | N/A |
| | отсеков для приводов 3.5" (Всего/Свободных) | 0/ |
| | отсеков для приводов 2.5" (Всего/Свободных) | 1/1 |
| | ODD(Type) | N/A |
| | ODD Height | N/A |
| ODD Type | N/A | |
| Communications | LAN | Realtek RTL8111H |
| | WLAN | INTEL/9462.NG.WG.NV |
| | WLAN Version | 802.11ac 1x1+BT |
| | BT Version | 5 |
| Audio | Audio Chipset | Realtek ALC897 |
| | Audio Type | 2.1 Channel HD Audio |
| I/O Ports (Front) | USB 2.0 Type A | 2 |
| I/O Ports (Rear) | USB 3.2 Gen 2 Type C (R) | 1 |
| | USB 3.2 Gen 2 Type A (R) | 1 |
| | USB 3.2 Gen 1 Type A (R) | 2 |
| | RJ45 | 1 |
| | HDMI™ out | 1x (v2.0) |
| | DP out | 1x (v1.4) |
| Power | AC Adapter Output | 120W |
| | Battery | N/A |
| | Battery Whrs | N/A |

| | | |
|--------------------------------------|--|---|
| In The Box | Keyboard Interface | USB |
| | Mouse Interface | USB |
| | Power Cord | 1 |
| | AC Adaptor | 1 |
| | Warranty Card | N/A |
| | Quick Guide | 1 |
| | User Manual | 1 |
| | VESA Mount kit | N/A |
| | Keyboard | SK9626MW |
| | Mouse | SM9023MW |
| Design | Adjustment (Tilt) | -5° ~ 20° (+/-2°) |
| | Adjustment (Swivel) | N/A |
| | Adjustment (Height) | N/A |
| | Adjustment (Pivot) | N/A |
| Dimension & Weight | Weight (Net kg) | 4.63 |
| | Weight (Gross kg) | 8 |
| | Product Dimension with Holder (WxDxH) (mm) | N/A |
| | Product Dimension with Holder (WxDxH) (inch) | N/A |
| | Inside Carton Dimension with Holder (WxDxH) (mm) | N/A |
| | Inside Carton Dimension with Holder (WxDxH) (inch) | N/A |
| | Inside Carton Dimension with Stand (WxDxH) (mm) | 696 x 218 x 490 |
| | Inside Carton Dimension with Stand (WxDxH) (inch) | 27.4 x 8.58 x 19.29 |
| Product Dimension with Stand (WxDxH) | Product Dimension with Stand (WxDxH) (mm) | 613.49 x 268.00 x 457.66 |
| | Product Dimension with Stand (WxDxH) (inch) | 24.15 x 10.55 x 18.02 |
| Warranty | Warranty | 12months |
| Regulatory Compliance | Operating, Storage Temperature | 0° C ~ 35° C ; -20° C ~ 60° C |
| | Operating, Storage Humidity | 0% ~ 85%;0% ~ 90% |
| | Regulatory Compliance | FCC(Class B), CB/CE, UL(CUL), BSMI, VCCI, RCM(C-Tick) |
| Barcode Info | EAN | 4711377121866 |