

[How to] Clean Install MSI Dragon Center/Creator Center (UWP)

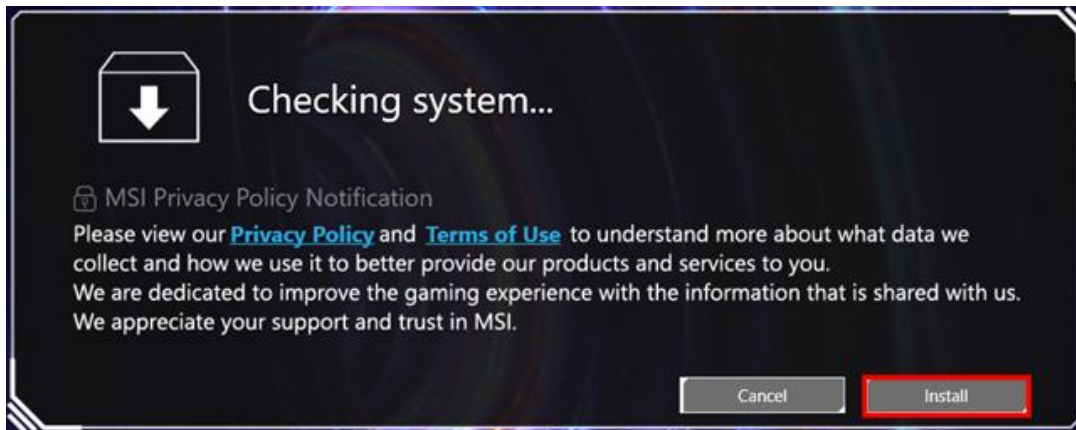
For laptops supporting UWP version MSI Dragon Center or MSI Creator Center, please refer to the following two methods to clean install the program.

Method A. Clean install through offline package

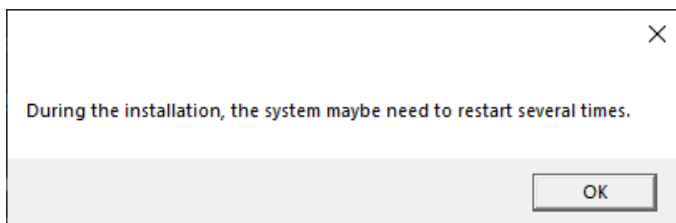
1. Visit MSI website and go to the “Utility” tab in the download page of the product to download MSI Dragon Center/Creator Center Offline Package.

Title	Version	Release Date	File Size	
MSI Dragon Center (Offline Package)	2.0.65.0	2020-08-17	682.74 MB	

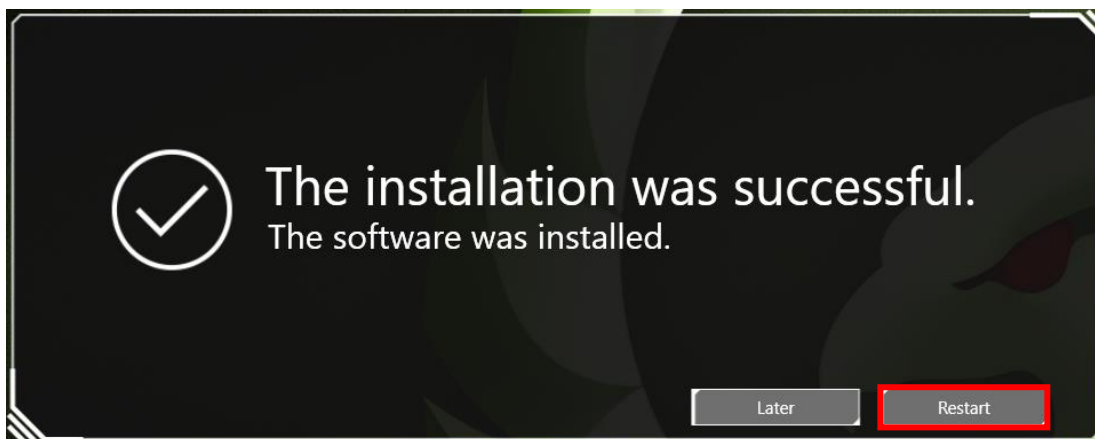
2. Extract the file and execute “Setup.exe” as administrator.
3. Click “Install” to start the clean installation process.



4. Click “OK” to proceed with the process.

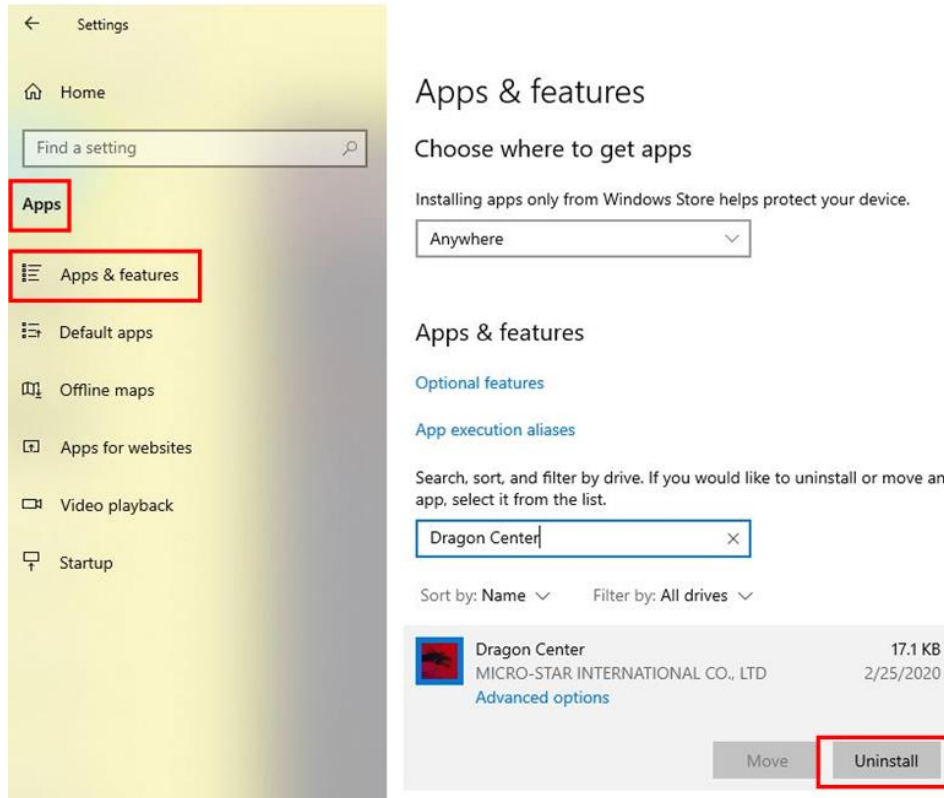


5. When the installation process is completed, click “Restart”.

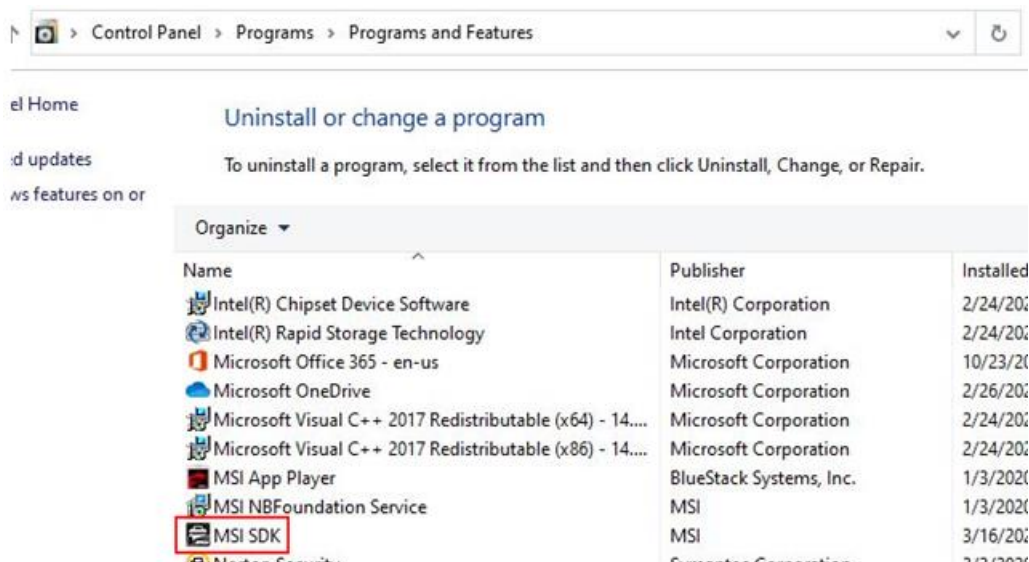


Method B. Manually clean install from Microsoft Store

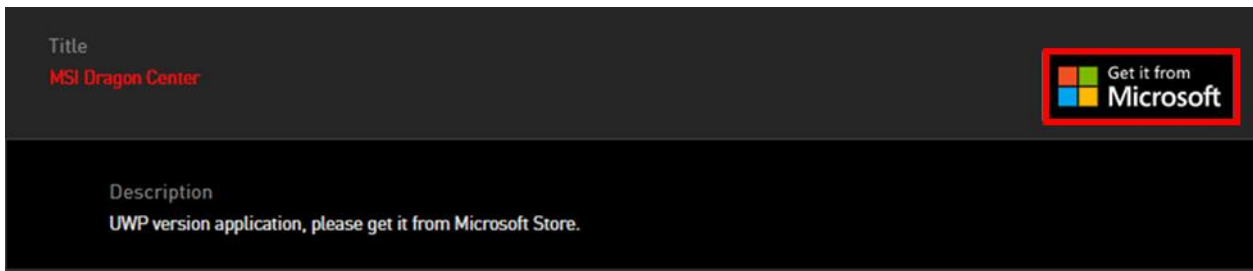
1. Go to **Windows Settings > Apps > Apps & features** to uninstall MSI Dragon Center/Creator Center that is currently installed on the laptop.



2. Go to **Control Panel > Programs > Programs and Features** to uninstall “MSI SDK”. Follow the on-screen instructions to complete the process.

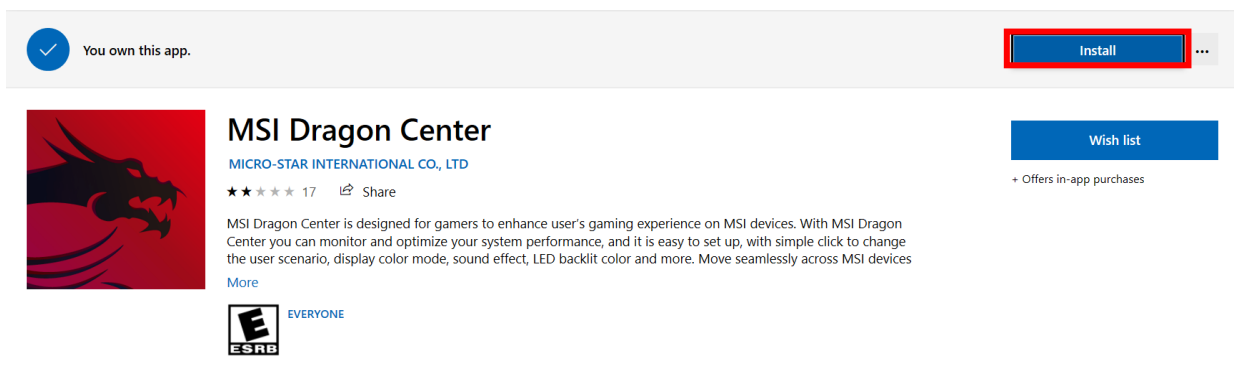


3. Visit MSI website and go to the “Utility” tab in the download page of the product in order to get MSI Dragon Center/Creator Center download link.

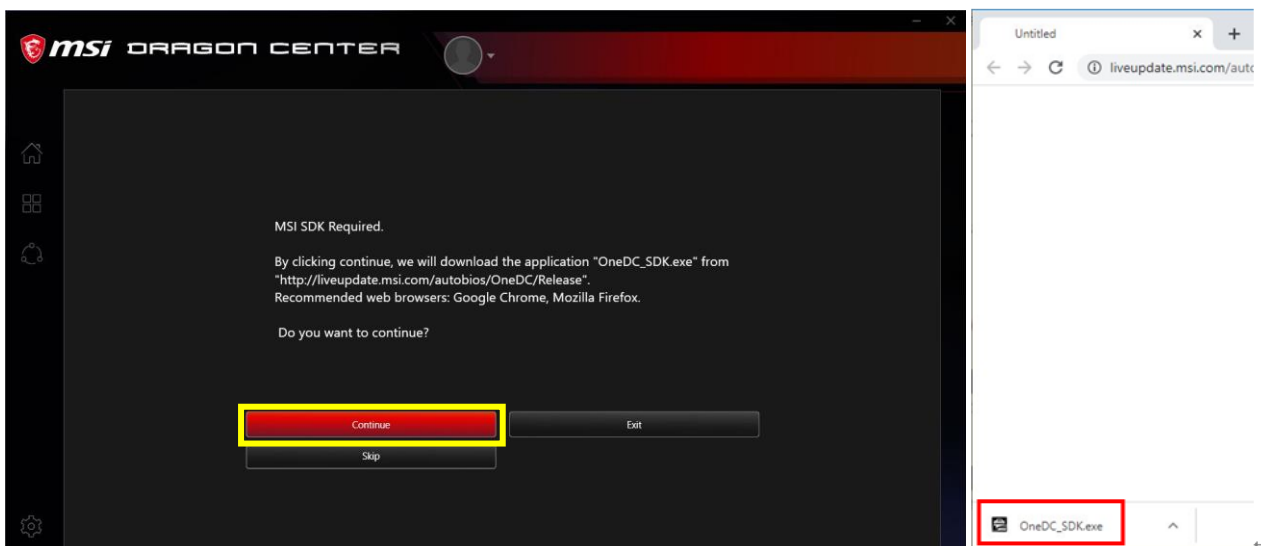


NOTE: Make sure the laptop connects to the Internet before proceeding to the following steps.

- Click “Install” to install Dragon Center/Creator Center and launch the program as the installation process completed.

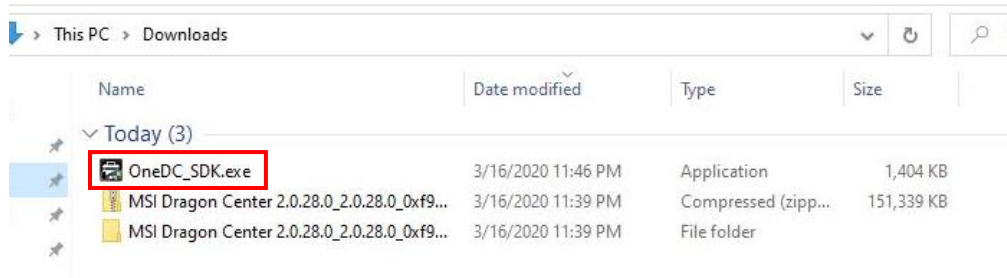


- Click “Continue”, then the default browser of the laptop will pop up and start downloading “OneDC_SDK.exe” automatically.



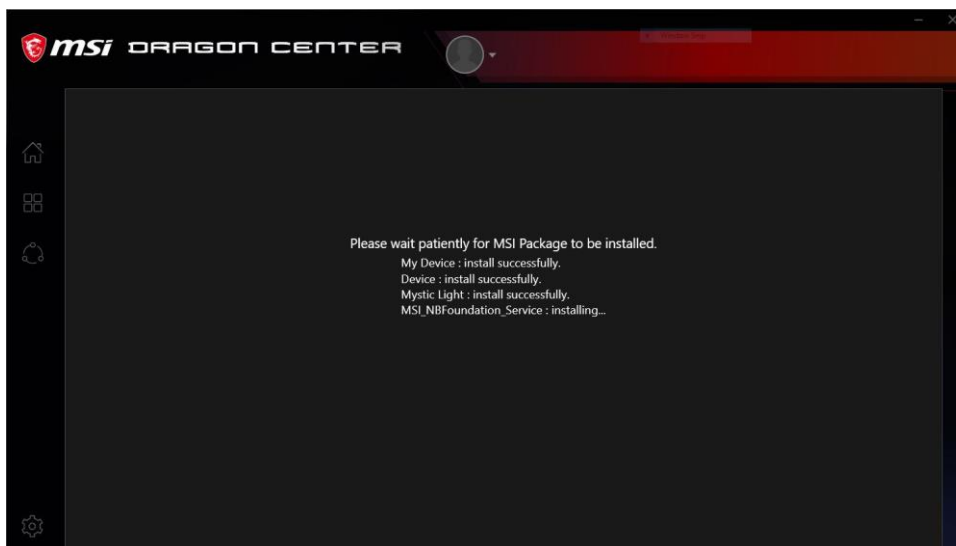
NOTE: When the browser shows up and asks for the permission to download OneDC_SDK.exe, please click “Allow” to continue the download process.

6. Double click to run “OneDC_SDK.exe” and follow the on-screen instructions to finish the installation process.

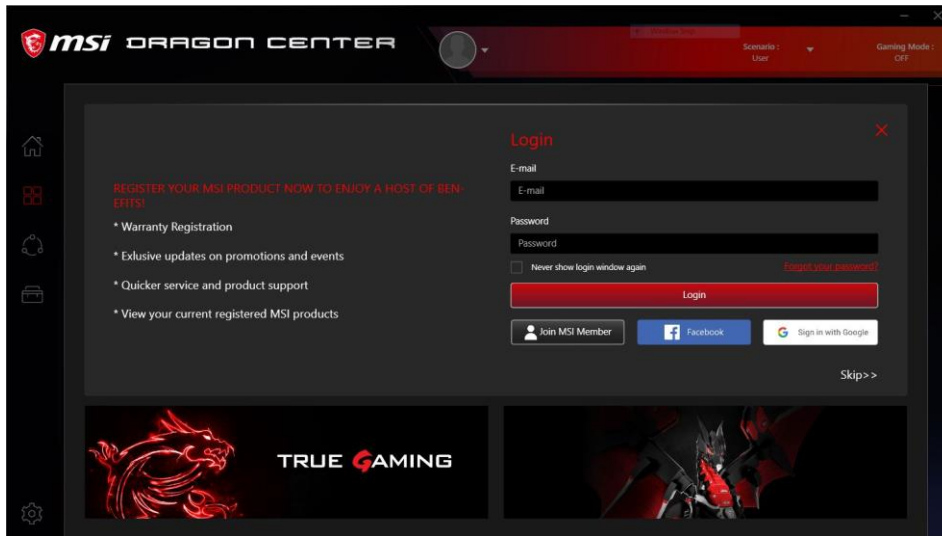


7. When the laptop finishes running OneDC_SDK.exe, MSI Dragon Center/Creator Center will start downloading the necessary packages automatically. This process make take a while to complete.

NOTE: After OneDC_SDK has been installed, if MSI Dragon Center hasn't proceeded to the download process, please wait for a moment.



- As the SDK initialization process completed, Login page will pop out automatically. Please restart the laptop.



- The clean installation process of MSI Dragon Center/Creator Center is completed.